

100, C. ADDRESS,
"BEARDMORE, GLASGOW"

TELEPHONE NO 1356.

100, OFFICE,
QUEEN VICTORIA ST. E.C.
100, OFFICE,
SAINT NICHOLAS BUILDINGS.

5/8 Cuckoo
Hull Report No 9059

Parkhead Forge, Rolling Mills,
and Steel Works.

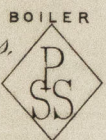
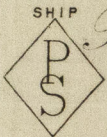
Glasgow. 6. Nov 1894.

Messrs Earles Shipbuilding Co Ld.

Hull
9/3/94

Bought of William Beardmore & Co.

Manufacturers of Steel Plates Bars & Rivets (Siemens Process) & Iron Plates Bars &
Rivets for Ships, Boilers, &c. & Marine Engine Forgings of all descriptions.
Iron & Steel Plates flanged for Boiler Fronts &c.



STEEL		PSS					
386 A	1	509	15.5	96 1/2	7/8	22.8	
B	1	508	12.8 5/8	.	.	151.	
FF	1	510	8.6 3/4	81	11/16	142 12	
D	2	704	8.0 1/2	134	3/4	5.	
E	2	.	7.8	.	.	43 16	
aa	1	542	7.3	73	9/16	3.	
BB	2	702.769	5.6	27.23	.	5.8	
DD	1	542	4.2 1/2 ends	72	.	1018	
EE	1	534	8.5	50 1/2	7/8	113 20	
CC	1	944	5.11	27	5/8	31.	
13						615 116	

Per Crn 39058 to Liverpool Sth Hull.

1 Plate	3.1.0	1/1
3	4 11 3.20	4/75
9	2.0.0.24	1/77

Q. J. S. dook
9/3/94
to Lloyd's Register.



© 2019

Lloyd's Register
Foundation

Hull 408-0329