

S/S Uganda Hull Report No: 9023
Ulundi — — 9043

HUL408-0316



© 2019

Lloyd's Register
Foundation

R. H. M.
 10/11/93
 10/11/93

STEEL BOILER

No A 41 & 2

1/2" Working Hole Report No. 1023
 10/11/93

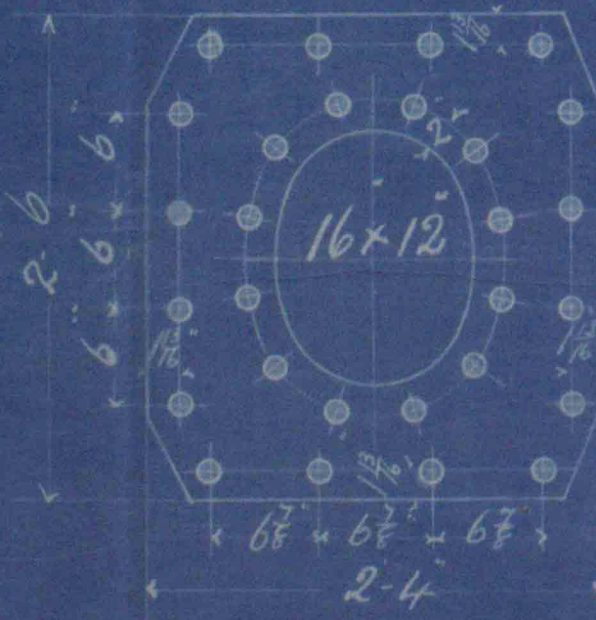
WORKING PRESSURE 160 LBS.

SCALE 1 INCH = 1 FOOT.

NOTE!

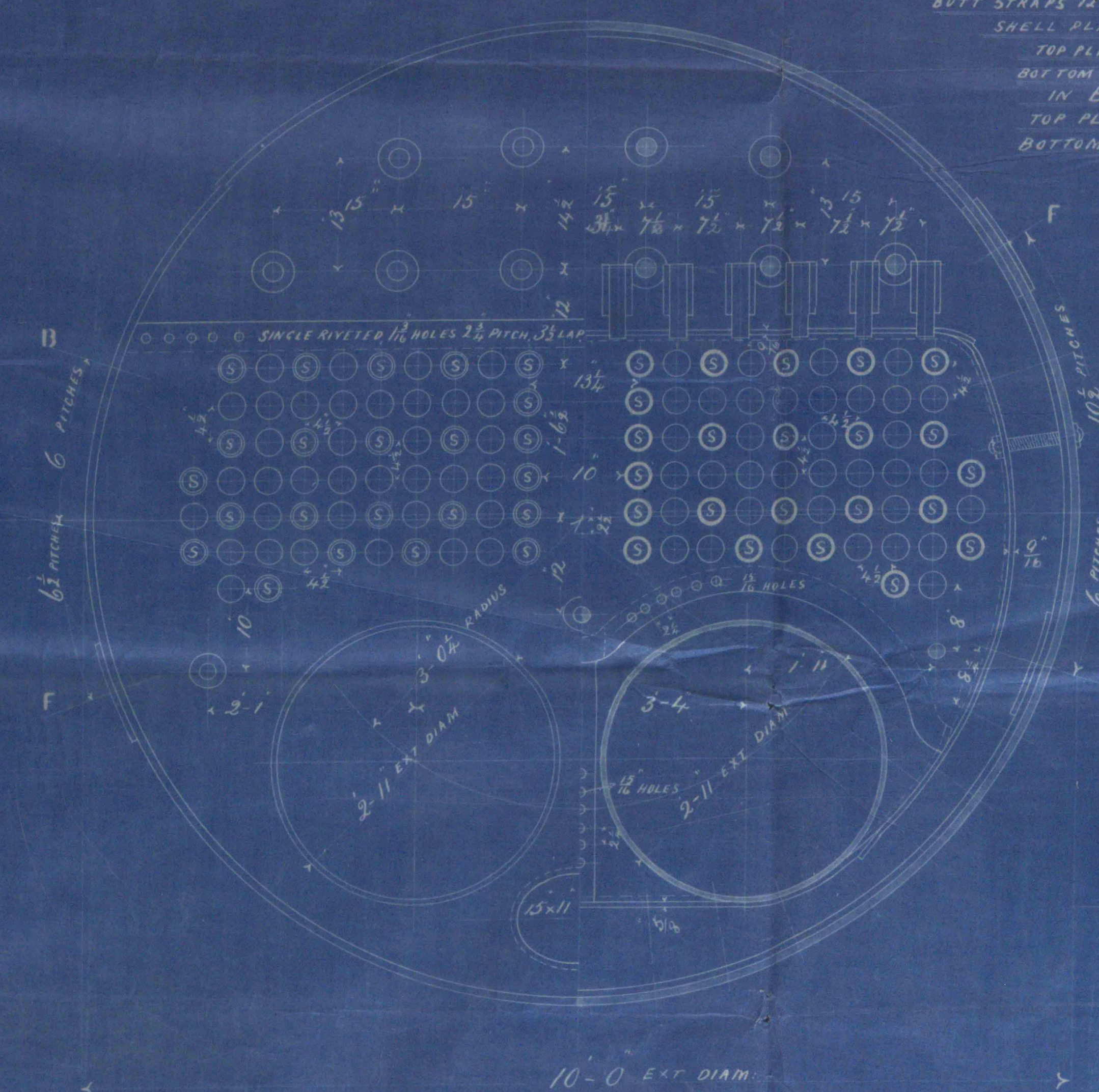
ALL PLATES, STAYS AND RIVETS TO BE OF SIEMENS
 MARTIN STEEL. ALL RIVET HOLES TO BE DRILLED
 IN LONGITUDINAL SEAMS, ALL OTHERS TO BE
 PUNCHED OR DRILLED AS MAY BE CONVENIENT.
 THE DRILLING WILL BE DONE IN PLACE AFTER
 BENDING AND ALL PUNCHED OR FLANGED PLATES
 TO BE ANNEALED AFTERWARDS. IF ANY HOLES ARE
 PUNCHED AFTER THE PLATES ARE ANNEALED THEY
 ARE TO BE RIMED OUT SO AS TO REMOVE AT LEAST
 1/8" ALL ROUND MEASURING FROM THE LARGEST
 PART OF THE PUNCHED HOLE. THE SCREW STAYS
 ARE 1 1/2" EFFECTIVE DIAM. SCREWED INTO
 THE PLATES AND NUTTED AT EACH END.
 THE STAYS ARE IRON. THE STAY TUBES ARE
 2 1/2" INTERNAL DIAM. 8 3/16" THICK EFFECTIVE.
 THE ORDINARY TUBES ARE 3 1/2" EXT. DIAM. AND
 1/2" L.S.C. THICK. A MANHOLE IN SHELL 16" X 12"
 WITH SHORTER AXIS LONGITUDINALLY AND A
 DOUBLING PLATE 2' 6" X 2' 4" X 1/2" THICK
 FITTED AROUND IT. ALL STAYS OF STEEL
 EXCEPT THOSE JOINTED WHICH ARE OF IRON.
 ALL STUDS FOR SECURING SMOKE BOXES TO BE
 TAPPED INTO BLIND HOLES.

DOUBLING PLATE AROUND MANHOLE

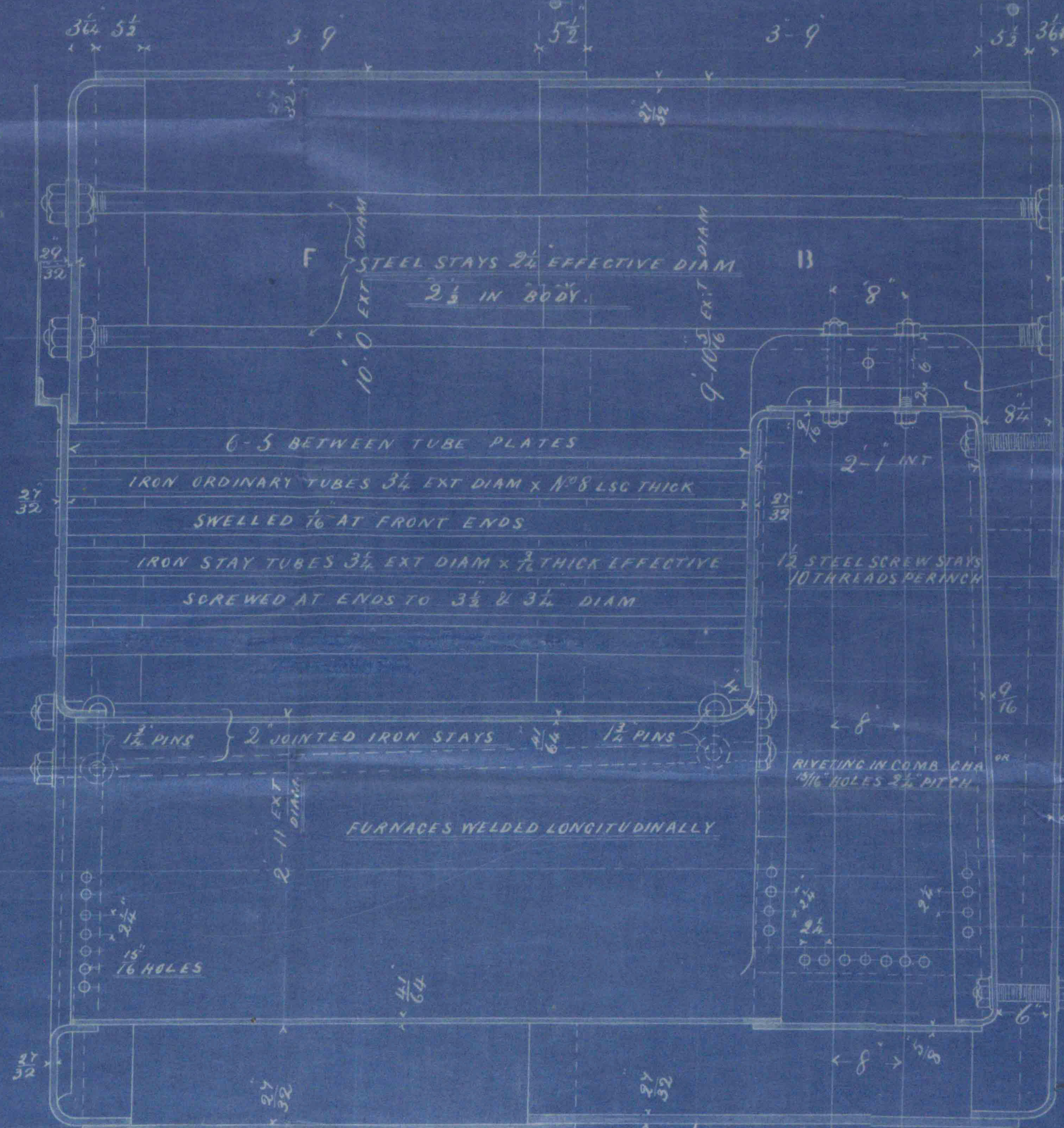
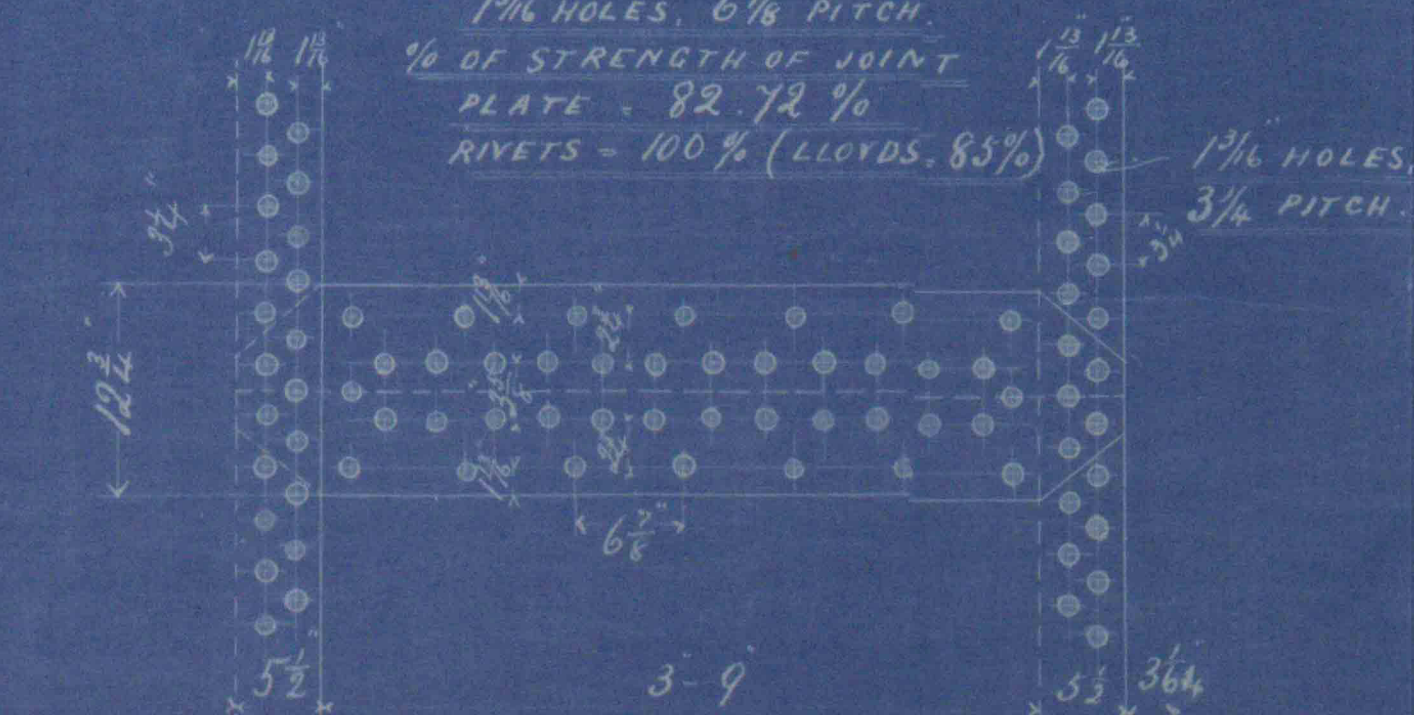


1 1/2" RIVET HOLES
 INNER ROW COUNTERSUNK
 AND FLUSH RIVETED

SHELL 3/16" THICK
 BUTT STRAPS 12 1/2" X 3/4" THICK
 SHELL PLATES IN F STRAKE
 TOP PLATE 33 PITCHES
 BOTTOM - 61
 IN B STRAKE
 TOP PLATE 37 PITCHES
 BOTTOM - 37



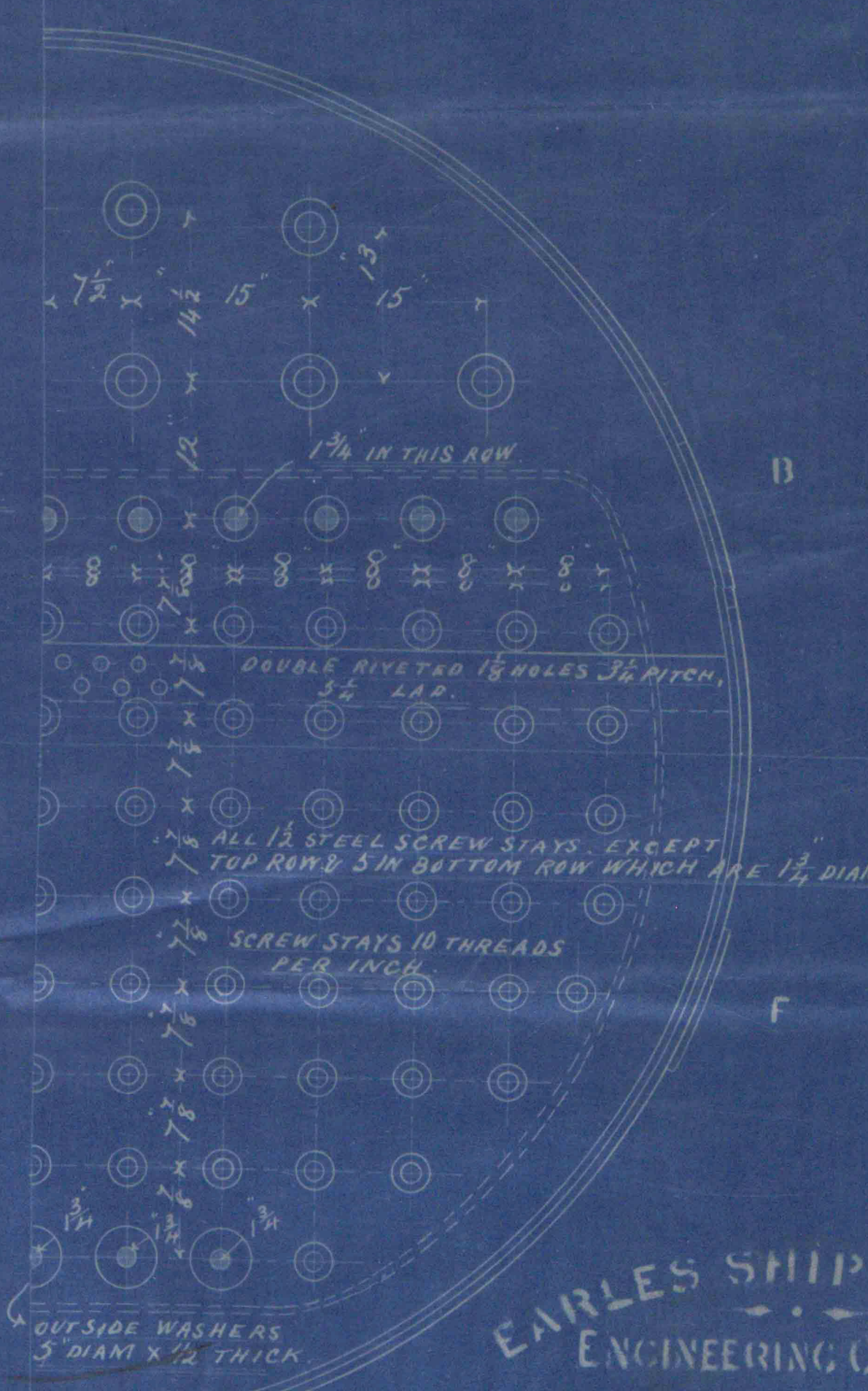
PLAN OF SHELL RIVETING
 1 1/2" HOLES, 6 1/2" PITCH
 % OF STRENGTH OF JOINT
 PLATE - 82.72 %
 RIVETS - 100 % (LLOYDS 85%)



9' 6" TOTAL LENGTH

DIMENSIONS

LENGTH OF FIRE BARS	5' 0"
AREA OF FIRE GRATE	28.54 SQ. FT.
DIAM. OF TUBES OUTSIDE	3 1/2"
LENGTH OF TUBES BETWEEN PLATES	6' 5"
NO. OF TUBES	118
AREA THROUGH TUBES	6.54 SQ. FT.
SURFACE OF TUBES	644
TOTAL HEATING SURFACE	800
WORKING PRESSURE	160 LBS.
DIAM. OF SAFETY VALVE EACH	2"



EARLES SHIPBUILDING
 ENGINEERING COMPANY
 LIMITED
 HULL

No A 41 & 2

W.A.
 30.12.93

4-4-93
 No 3534
 28.12.93