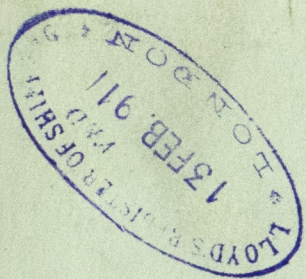


s/s onyx Hull Report No: 7888  
s/s opal — — — 7930  
s/s jasper — — — 8035  
s/s agate — — — 8046

agate.  
Hull. 8046.

Hul 405-0223



© 2019

Lloyd's Register  
Foundation



See 13. 2. 91.

DIA<sup>r</sup> OF BOILER ----- 10.9 mean  
LENCH OF D<sup>o</sup> ----- 9.6  
NUMBER OF TUBES ----- 110  
LENGTH OF D<sup>o</sup> ----- 6.7 between plates  
DIA<sup>r</sup> OF D<sup>o</sup> ----- 3.5 cool  
HEATING SURFACE IN TUBES 662 sq. feet.  
TOTAL HEATING SURFACE 881.5 sq. feet.  
FIRE BAR SURFACE  
DIA<sup>r</sup> OF SAFETY VALVES  
CUBIC FEET OF STEAM SPACE  
WORKING PRESSURE ----- 110 lbs

Circumferential joint  
Rivets 7/8 dia rivet holes 1 1/8  
% of plate 69.8  
% of rivet 50.8

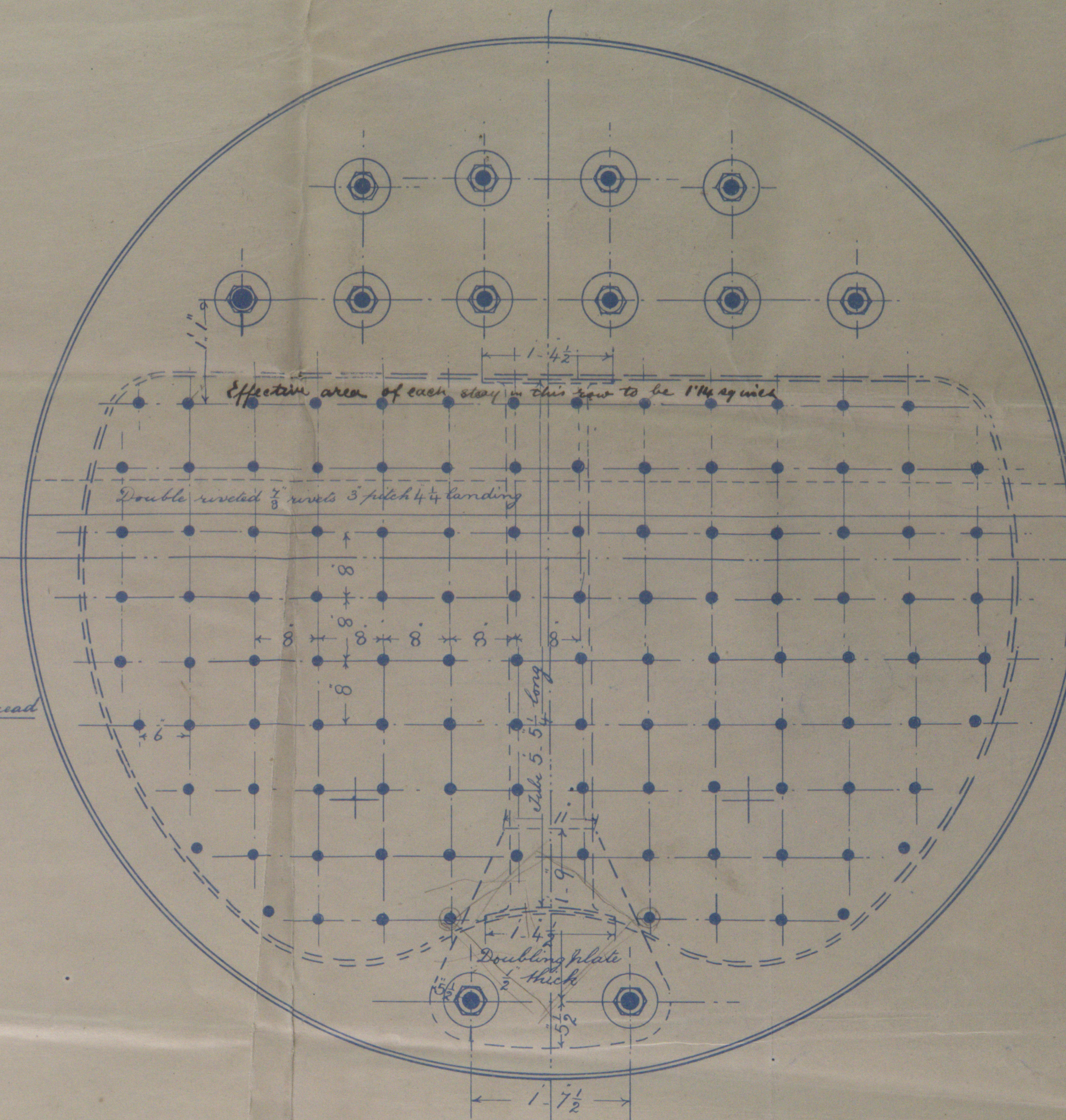
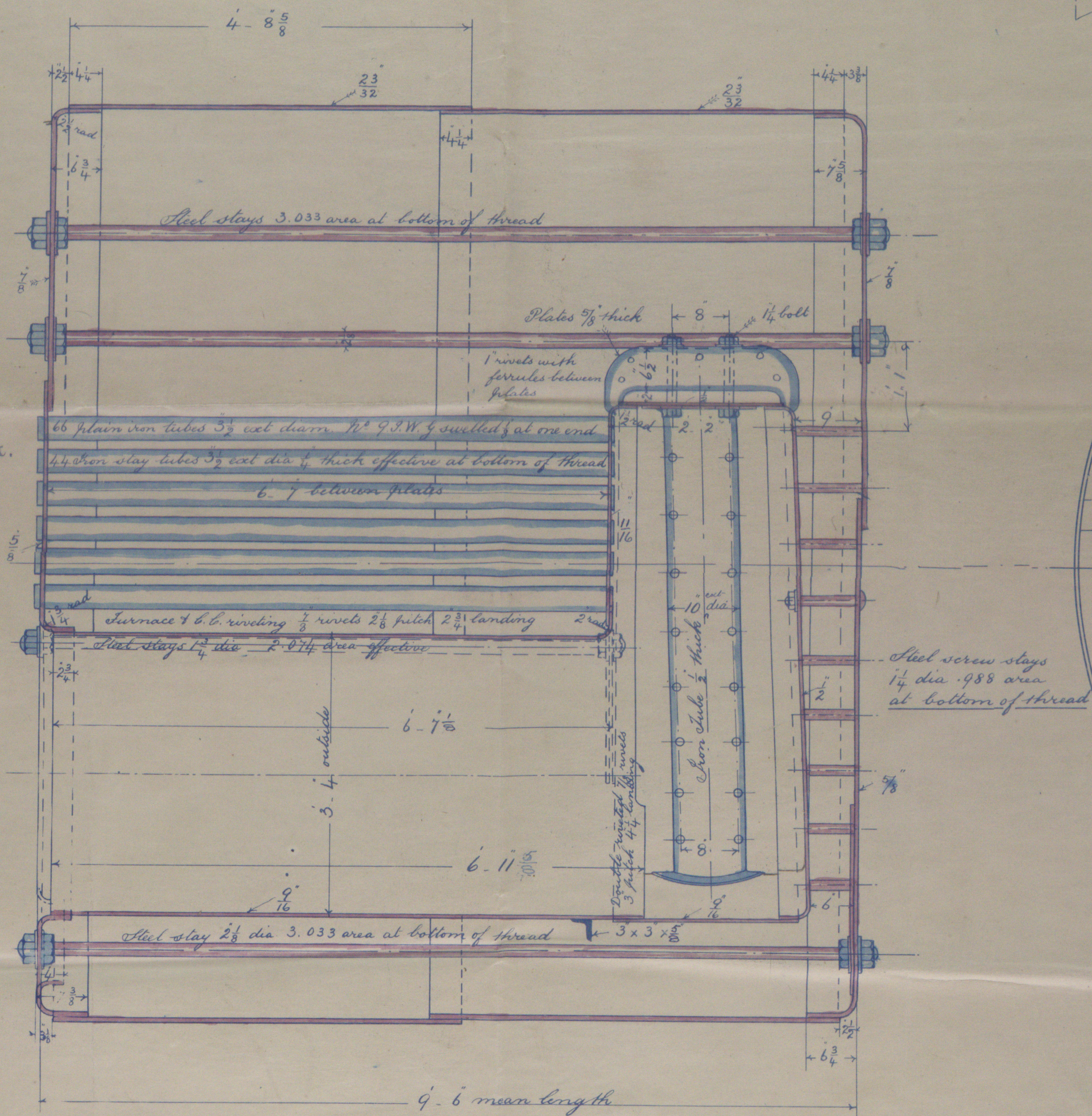
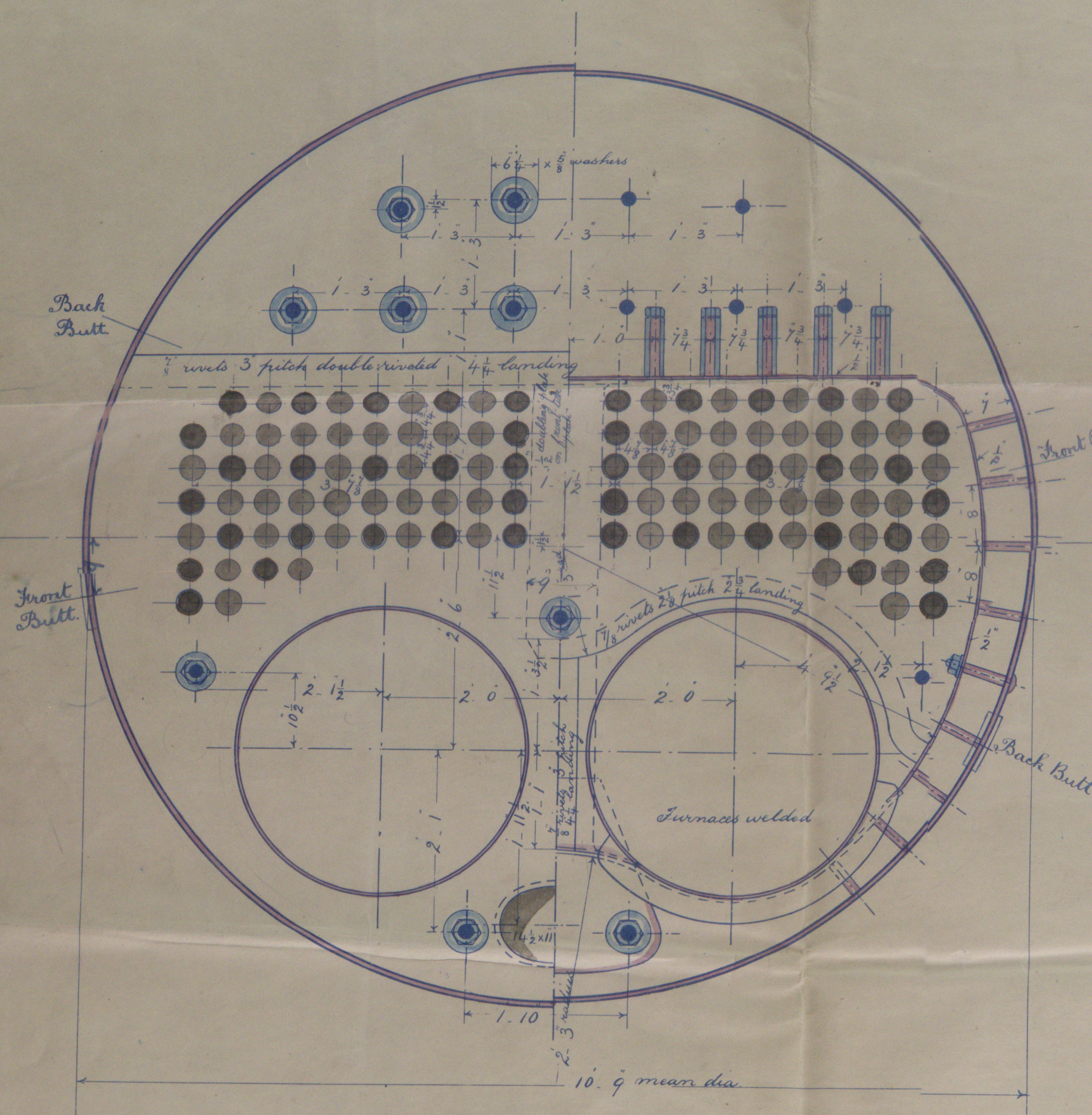
Longitudinal joint  
Double Butt Straps 2 3/8 thick  
Rivets 7/8 dia rivet holes 1 1/8  
% of plate 81.4  
% of rivet 32.1

025 % Ompx Hull Report to 7888  
026 % afal ----- 7920  
027 % Josph ----- 8035  
028 % afak ----- 8046



— Note —

The plates, rivets & stays of steel by the Siemens Martin process  
All rivet holes in shell to be drilled in place after bending.  
All rivet holes to be drilled throughout the Boiler  
The shell to be in two lengths circumferentially  
No two seams to be in the same longitudinal line  
Bridge stays on C.C. top to be of wet iron plates  
All flanged plates to be annealed after bending  
No steel stays to be welded  
Suber of wet iron



# STEEL BOILERS FOR 025.026.027.&028. 1 OFF TO EACH N<sup>o</sup>.

SCALE 1 INCH = TO ONE FOOT

AMOS & SMITH.  
ENGINEERS  
ALBERT DOCK WORKS  
HULL.



HULL 405-0223

Feb 10 1891

