



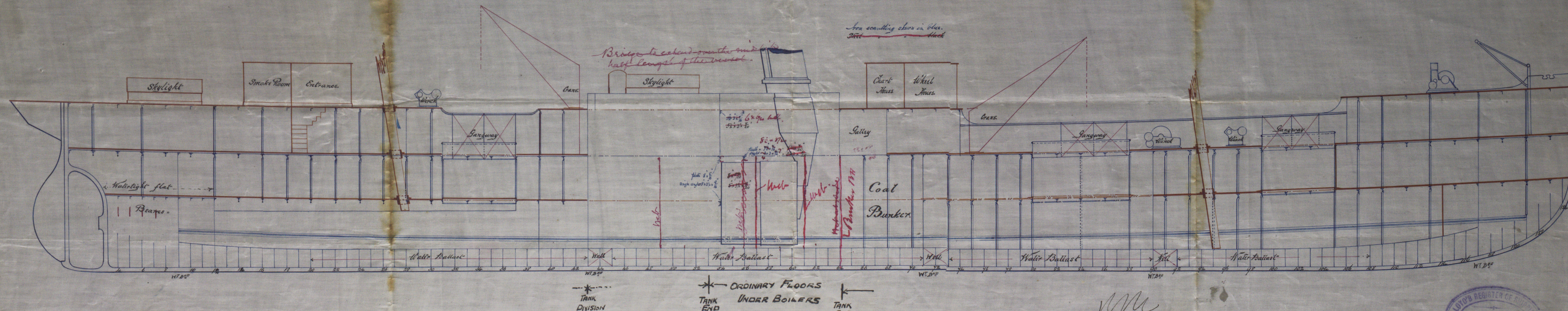
s/s Lutterworth
Hull Report No: 7898
s/s Leicester
Hull Report No: 7955

Nos 343 and 344

Dimensions - 240' x 32' x 16' to ordinary floors

Longitudinal Section showing arrangement of Beams, Pillars &c

Scale 1/8" inch = One foot.



SEE AMENDED PLAN
NEWCASTLE JULY 1912

18M
20/10/90

28/8/90



HULL-6258