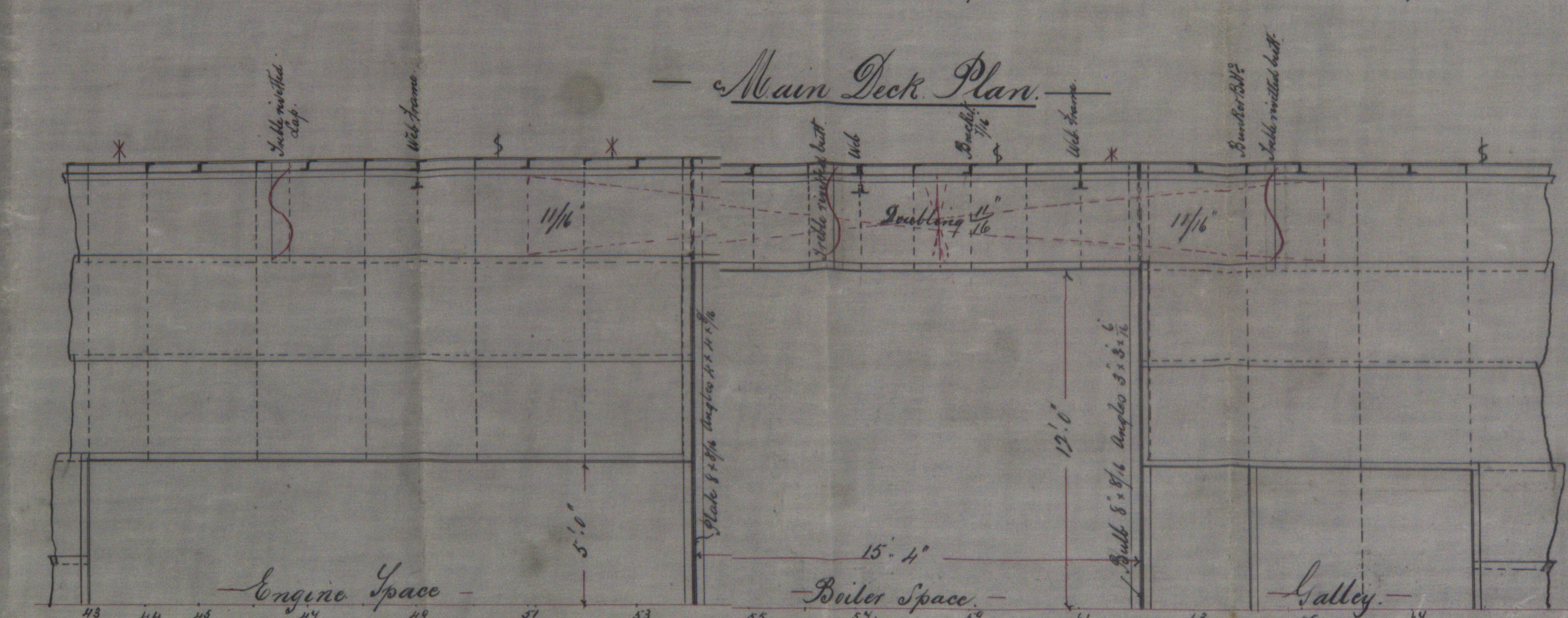
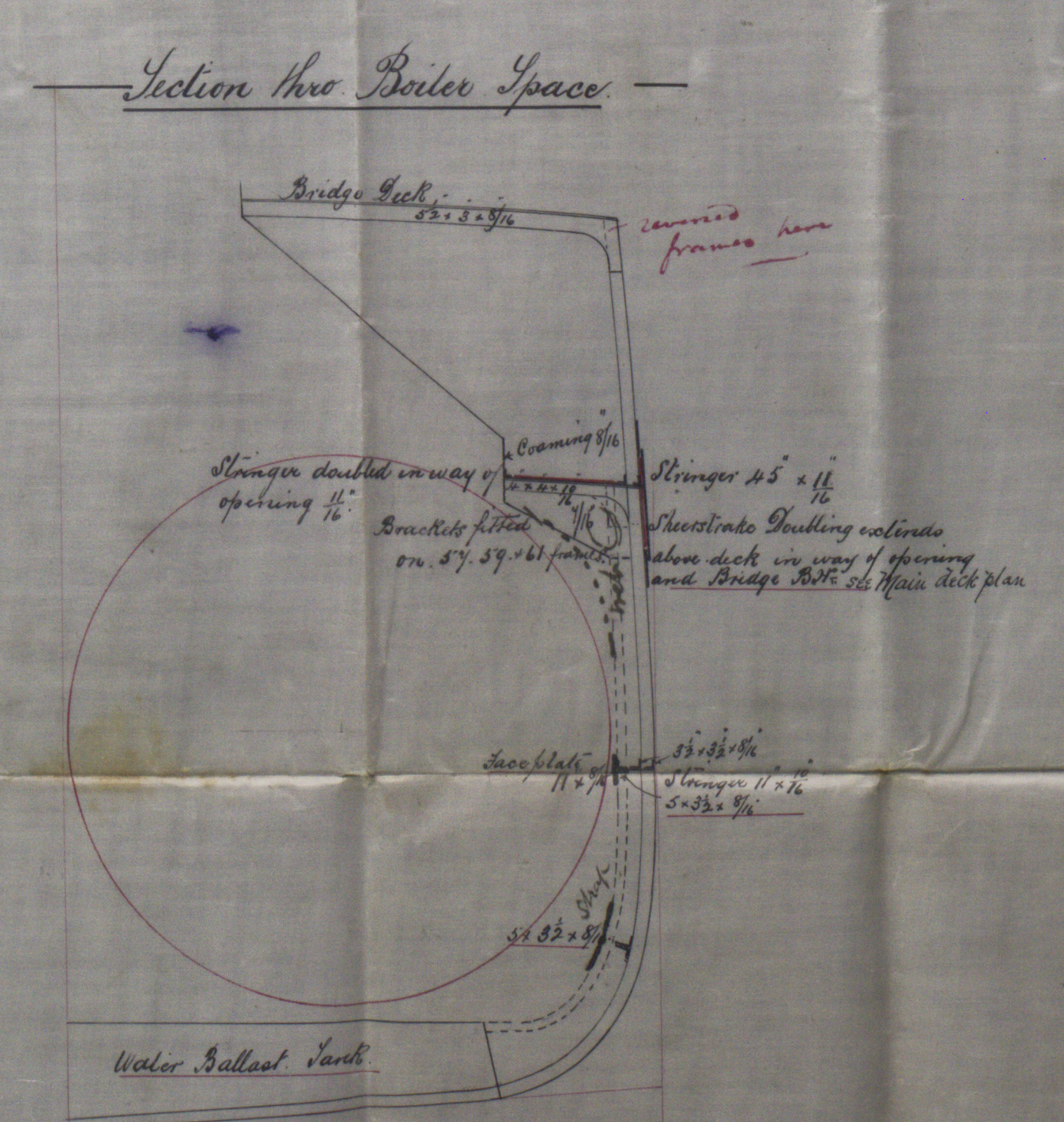
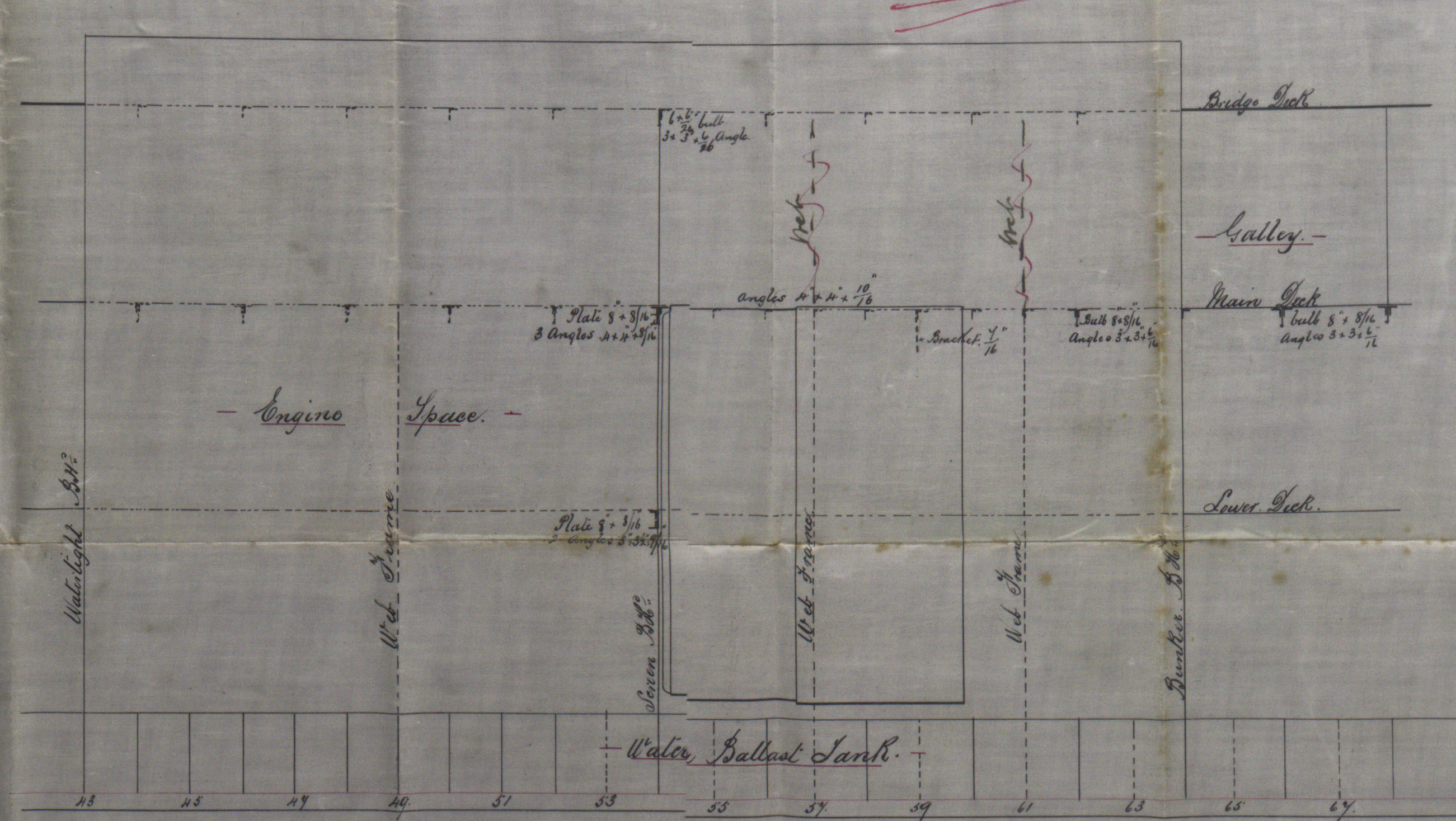


WED 1 OCT 90
TUE 21 OCT 90

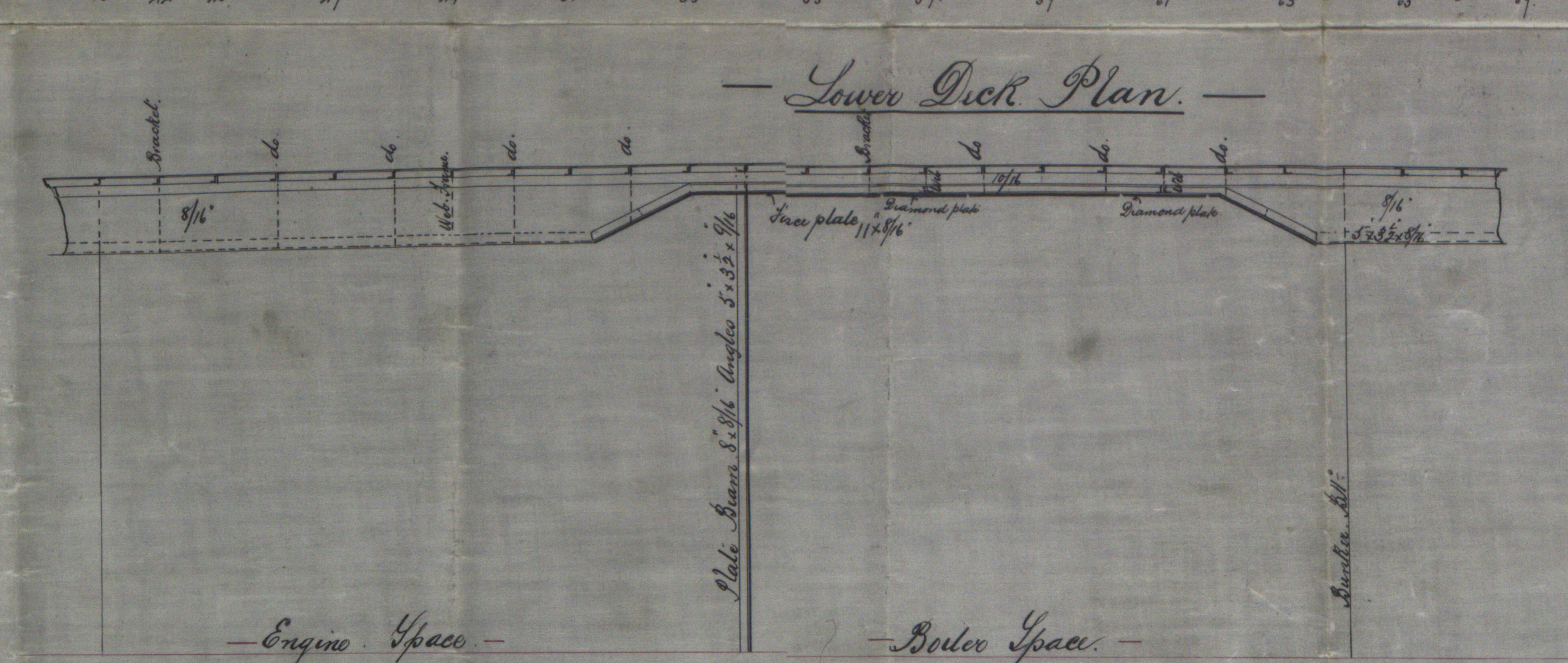
s/c Lutterworth
Hull Reports to 7898
s/c Leicester
Hull Reports to: 7955

A



— Nos 3, 4, 3, & 4. —
— Sketch showing Beams & Stringers —
— in Engine & Boiler Openings. —
— Scale 1/4" = one foot. —

LOVING'S REGISTER OF SHIPS
27 SEP 91
HULL DISTRICT



W & A L & E'S ENGINEERING
26.9.90
HULL DISTRICT

W & A
20/10/90