

TELEGRAPHIC ADDRESS "GLASGOW"
"BEARDMORE"

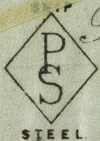
LONDON OFFICE: 11 QUEEN VICT.
NEWCASTLE OFFICE: 2 SAINT

TELEPHONE NO 1356.

Parkhead Forge, Rolling Mills,
and Steel Works.
Glasgow. 9th March 1891

14/3/91
Messrs. Ames & Co.

Bought of William Beardmore & Co.
Manufacturers of Steel Plates Bars & Rivets (Simons Process) & Iron Plates Bars &
Rivets for Ships, Boilers, &c. & Marine Engine Forgings of all descriptions.
Iron & Steel Plates flanged for Boiler Fronts &c.



18	1	Y301 ✓	3.6	9 1/2	1/2	1 2 4
14	2	Y377 ✓	5.3	26 1/4	.	4 3.
17	1	Y24 ✓	2.6	26	23/32	1 3.
3	2	.	4 9/16	9 3/4	.	2 1 1/2
5	4	.	4.7	.	.	4 3 1/2
4	2	.	4.3	.	.	2.12
2	1	Y324 ✓	16 7/8	57 1/2	.	1 2 1.
1	1	Y335 ✓	17 1/2	.	.	1 2 3.
11	1	Y39 ✓	10.2	60	4 1/2	13 2 8
1	1	Y38 ✓	17 1/2	57 1/2	23/32	1 2 3 1/2
16	Gr. CR. Null					4 18. 12
Major m. 355 32. 356 74.						

$\frac{2}{79}$ 3 RL. 5 1 4

$\frac{2}{74}$ 2 " 1 16 2 24

$\frac{1}{74}$ 11 " 2 16 - 12

James Thorne

Surveyor to Lloyd's Register.

12/3/91



Lloyd's Register
Foundation

HULL-0196