

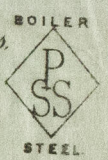
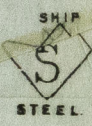
GLASGOW
BEARDMORE
LONDON OFFICE
11 QUEEN ST. E.C.
NEWCASTLE OFFICE
2 SAINT NICHOLAS BUILDINGS.

TELEPHONE NO 1356.

Parkhead Forge, Rolling Mills,
and Steel Works.
Glasgow 12 March 1891

12/3/91

Messrs. *James Smith*
Bright of William Beardmore & Co.
Manufacturers of Steel Plates, Bars & Rivets (Siemens Process) & Iron Plates, Bars & Rivets for Ships, Boilers, &c. & Marine Engine Forgings of all descriptions.
Iron & Steel Plates Flanged for Boiler Fronts &c.



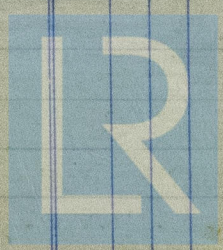
28	2	98.9	10.0 1/2	92	9 1/2	1	14	1	.
10	1	98.3	17.0 3/4	27 1/2	28 1/2	1	3	2	.
1	1	98.4	2.6	28	1/2	.	1	.	12
16	1	98.1	17.0 3/4	57 1/2	28 1/2	1	2	3	8
17	1	91.0	2.6	26	.	.	1	2	12
4	2	.	4.3	98 1/4	.	.	2	.	16
5	2	.	4.7	.	.	.	2	1	4
3	2	.	4.9 1/2	.	.	.	2	1	16
11	1	91.9	10.2	60	11 1/2	.	13	1	8
18	1	91.6	2.6	9 1/2	1/2	.	.	2	8
14 Over 1 Mill						5	4	.	.

Major 38243. 6399.

2/80

James Smith
Surveyor to Lloyd's Register.

10/3/91



© 2019
Lloyd's Register
Foundation