

TELEGRAPHIC ADDRESS.  
"BEARDMORE, GLASGOW"

LONDON OFFICE.  
11 QUEEN VICTORIA ST. E.C.

NEWCASTLE OFFICE.  
2 SAINT NICHOLAS BUILDINGS

TELEPHONE N° 1356.

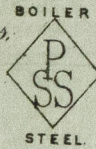
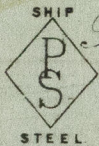
no 8035  
Parkhead Forge, Rolling Mills,  
and Steel Works,  
Glasgow. 7<sup>th</sup> March 1891

14 3 24

~~Mass.~~ Amos & Smith.

Bought of William Beardmore & Co.

Manufacturers of Steel Plates Bars & Rivets (Simons Process) & Iron Plates Bars &  
Rivets for Ships, Boilers, &c. & Marine Engine Forgings of all descriptions.  
Iron & Steel Plates flanged for Boiler Fronts &c.



27	1	918	10.6	92	9/16	1	14	3	8
10	2	928	9.1	26 1/2	.	.	4	1	20
15	1	908	3.6	9 1/2	1/2	.	.	2	8
18	1	912	2.6	28	.	.	1	.	12
16	1	904	11.2 1/2	54 1/4	25 1/2	1	2	.	20
1	1	900	2.6	26 1/2	.	.	1	2	8
14	1	910	4.3	9 3/4	.	.	2	.	12
4	2	.	4.8	9 3/4	.	.	4	2	8
5	4	2.	4 9/16	.	.	.	2	1	12
3	2	.							
15	Per R to Hull					3	13	2	24

May 20 382 43. 6399.

$$\frac{1}{80}$$

James Howard  
Surveyor to Lloyd's Register

Surveyor to Lloyd's Register

12/3/91