

TELEGRAPHIC ADDRESS. 025 <sup>S/S</sup> ~~Beardmore~~ <sup>Beardmore</sup> "BEARDMORE, GLASGOW"

TELEPHONE NO 1356.

LONDON OFFICE.  
11 QUEEN VICTORIA ST. E.C.  
NEWCASTLE OFFICE.  
2 SAINT NICHOLAS BUILDINGS.

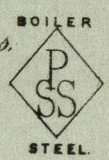
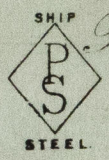
Parkhead Forge, Rolling Mills,  
and Steel Works.  
Glasgow. 9th March 1891.

14/3/91

Thos. Ames & Co. Ltd.

Bought of William Beardmore & Co.

Manufacturers of Steel Plates Bars & Rivets, Siemens Process & Iron Plates Bars & Rivets for Ships, Boilers, &c. & Marine Engine Forgings of all descriptions.  
Iron & Steel Plates Flanged for Boiler Fronts &c.



18	1	391	3.6	9 1/2	1/2	24
17	1	724	2.6	76	22/32	1 2
5	2	.	4.9 1/2	9 1/2	.	2 1 16
6	4	.	4.9	.	.	4 2 20
4	2	.	4.3	.	.	2 16
14	2	741	8.3	26 1/2	1/2	4 1 8
12	1	742	12.2	79	.	12 1 16
1	2	780	7.0 1/2	57 1/2	22/32	2 3 3 16
2	2	784	16.10 1/2	.	.	2 4 3
17 Q. C. B. & Hall					5 17	12

trayon ch 35532. 356 74.

(1/49) 1 Rl. 24  
(5/43) 12 4 1 4 3 20  
(1/47) 4 4 4 8 2 16

James Munro  
Surveyor to Lloyd's Register.  
12/3/91  
Hutchinson