

TELEGRAPHIC ADDRESS "STEEL" GLASGOW  
TELEPHONE N° 75

Blackburn Steel Works

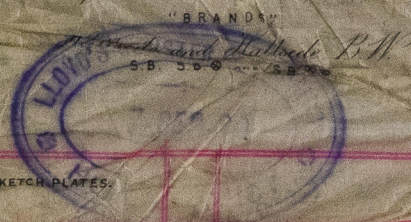
119 Glasgow 4<sup>th</sup> Sept 18 89.  
Messrs The Carter Shipbuilding Engineering Coy Ltd  
Bought of The Steel Company of Scotland Limited  
Manufacturers of Steel Plates & Bars of all kinds for Ships & Boilers, Rails of all Sections,  
Steel Castings & Forgings of every description.

Order No.  
Contract of  
Carriage

29 25/6/89



paid to Alexandria Dock Station  
Hull.



330.

					ORDINARY SHAPED PLATES.	SKETCH PLATES.	
A	2	Bo. plates 13-6 1/2	64 5/8	1 5/8	5 7 3 14		1257. 1259. 1198.
B	2	19-0	-	1 3/4	4 18 2 14		1183. 1214.
C	4	13-4 1/4	-	1 3/2	6 18 3 7		1256. 1257. 1273. 1275
E	2	2-6 1/4	28 1/4	1 1/8	5 3		1183.
I	2	16-1	71	1 1/2	2 0 2		1265. 1279.
K	1	15-9. 89 x 7 1/2 plates	-	-	1 8. 7 1 8. 7		1287.
L	2	15-11	57	1 1/2	2 14 2 14		1266. 1224.
M	1	15-1. 65-7 1/2 plates	-	-	1 1 1. 1 1 1.		1341.
AA	2	4-2	24	1/2	4		5045.
CC	2	7-10	-	1/2	6 3		981.
NN	1	8-0	42	1/2	5 1		6980.
NN	1	9-0	36	3/8	15		1822. 6823.
					274 27 29 1 7		

for N Blyth N° 10083 12 2 18. 7  
14723 4 6 8. 7  
32328 7 11 16 2 7  
6119 3 6 13 14

SURVEYOR TO LLOYD'S REGISTER.  
GLASGOW.

579/89

Batch 7/102. 3/121 3/135 3/144 7/148.  
3. 2. 4 3. 14

Lloyd's Register  
Foundation