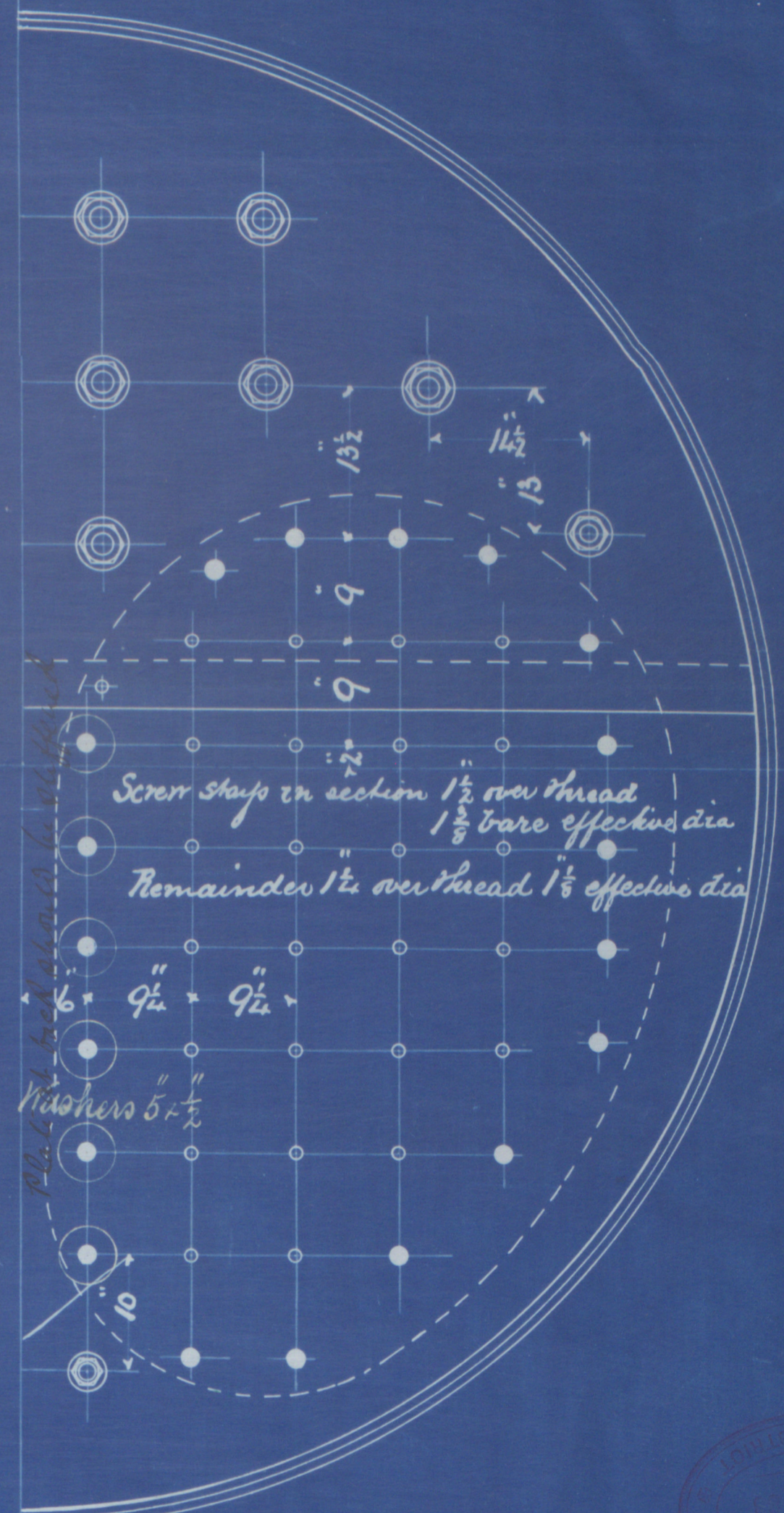
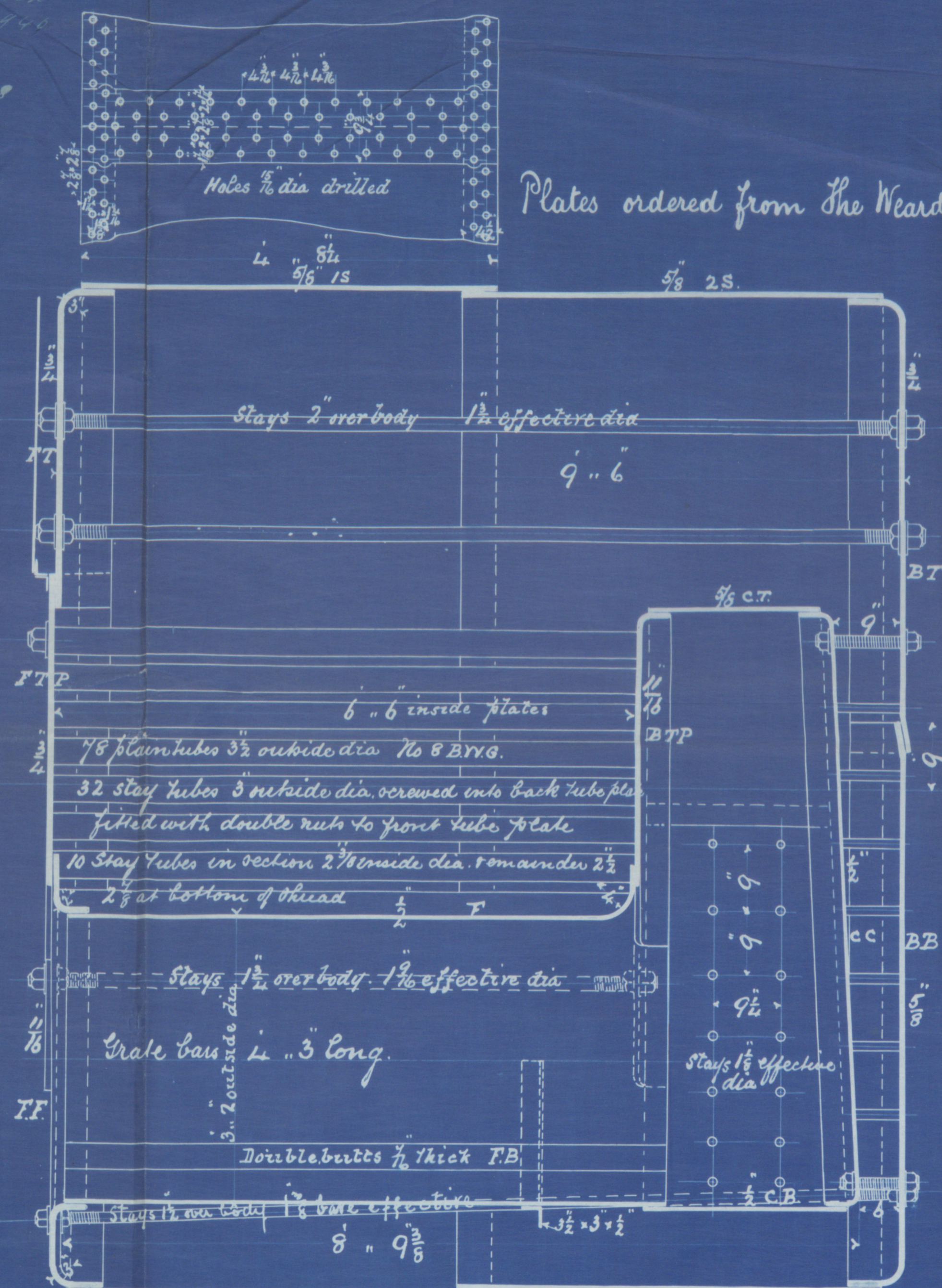
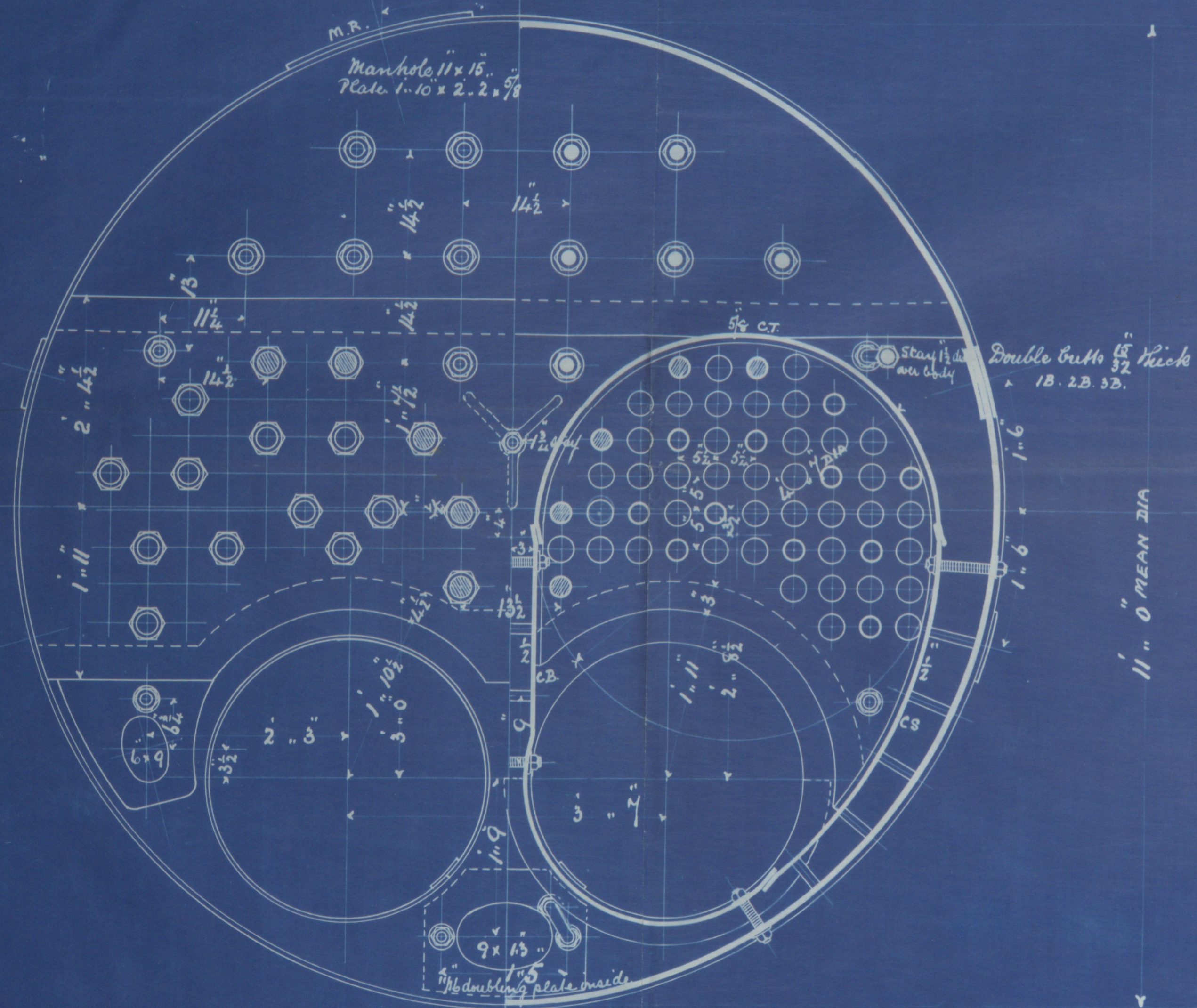


No. 89. All Despatch
 Hull Report No. 89
 90. 75. Despatch
 Hull Report No. 89
 91. 75. Despatch
 Hull Report No. 89

Working pressure 90 lbs
 Test " 180 "

Plates ordered from The Weardale Iron Works Co Ltd.



Boiler of steel throughout except tubes. Holes in shell & furnaces drilled
 in place after bending. All plates to be annealed after being either
 punched or flanged



BOILER N°88

BOILERS N°89 90 & 91

FOUNDER N° 51.7.88.

SCALE 1 INCH TO A FOOT

ENGINES N°10 11 & 12





HVL401-0017



© 2020

Lloyd's Register
Foundation