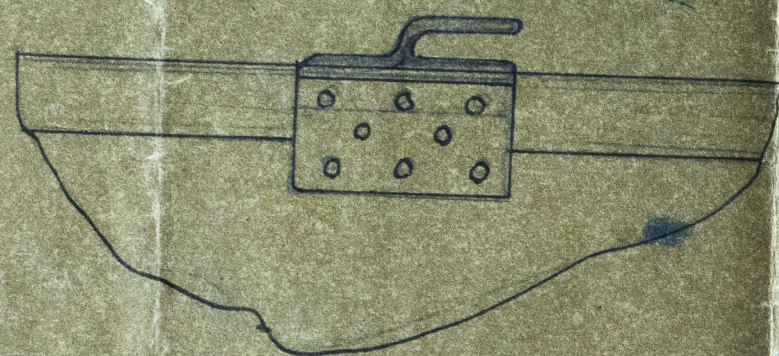
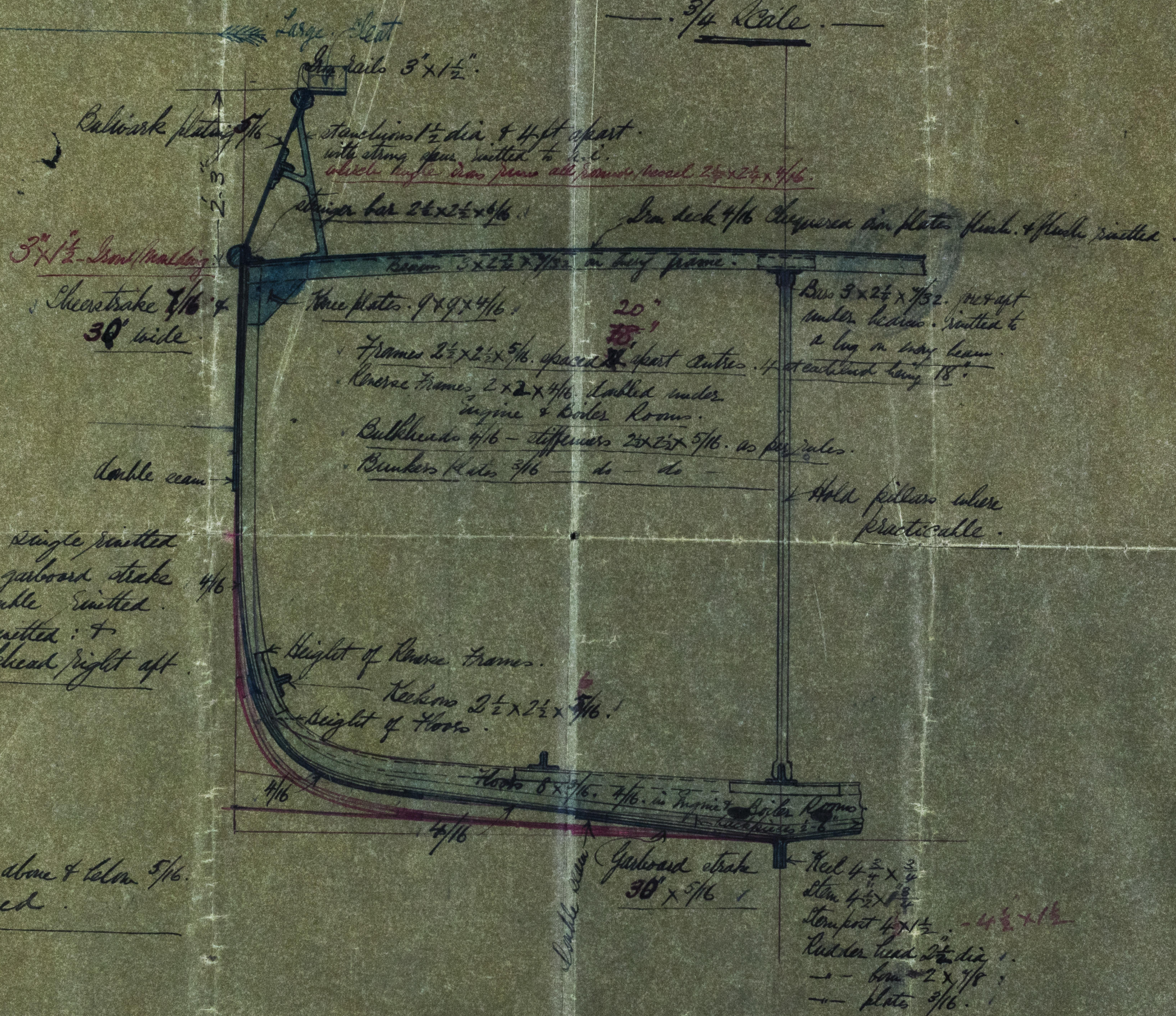


Elevation of
Large Cleat for Steps.



See Lt. to Messrs.
Watkins &
22/1/87.

Middleship Section of Iron Screw tug: No. 37. Watkins 900.
Length B.P. 56'-6" x 13'-3" x 4'-0" & 6" of hold.
To class A. Lloyd's for "ing purposes."
— 3/4 Scale. —



Outfit
Cable 50 fms of 1/2" steel chain
Brass Anchor 3 1/2 Cwt. patent.
Kedge 3/4 Cwt.

Tested as per Rules.

50 fms of 4 1/2 rope.
50 - - - 3 - -

1 turning line 4 1/2 lbs of lead line

Note The floor of this section will be
rather flatter than here shown

J.H.
20/1/87