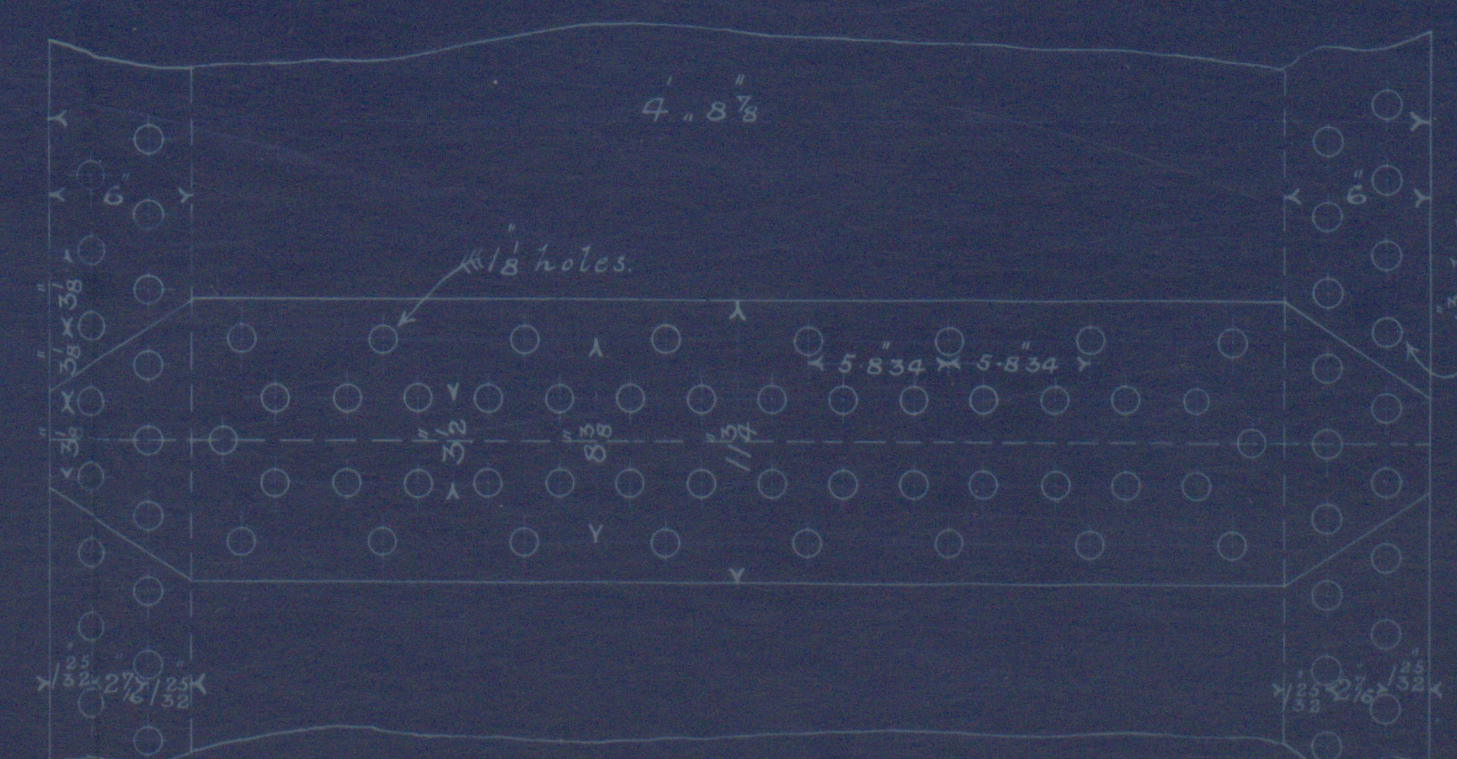


DIMENSIONS.

LENGTH OF FIRE BARS	
AREA OF FIRE GRATE	
DIAM. OF TUBES OUTSIDE	3 1/4
LENGTH OF TUBES	6 - 4 7/8 between plates.
Nº OF TUBES	124
SURFACE OF TUBES	685.72 sq. feet.
TOTAL HEATING SURFACE	
WORKING PRESSURE	150 lbs.
DIAM. OF SAFETY VALVE	

Particulars of Rivetting.
 Longitudinal seams to be fitted with double rivetted double butt joints, 1 1/8" new 5.834 pitch. Holes drilled in place.
 Circumferential seams to be fitted with double rivetted lap joints 1 1/2" holes, 3 1/2" pitch. Holes drilled.



All punched & flanged plates to be annealed after punching and flanging.
Steel stays not to be worked in fire.

20:4:86

Manhole in Shell
 16 x 13 lined outside with 1" steel plate 6 1/2" broad.

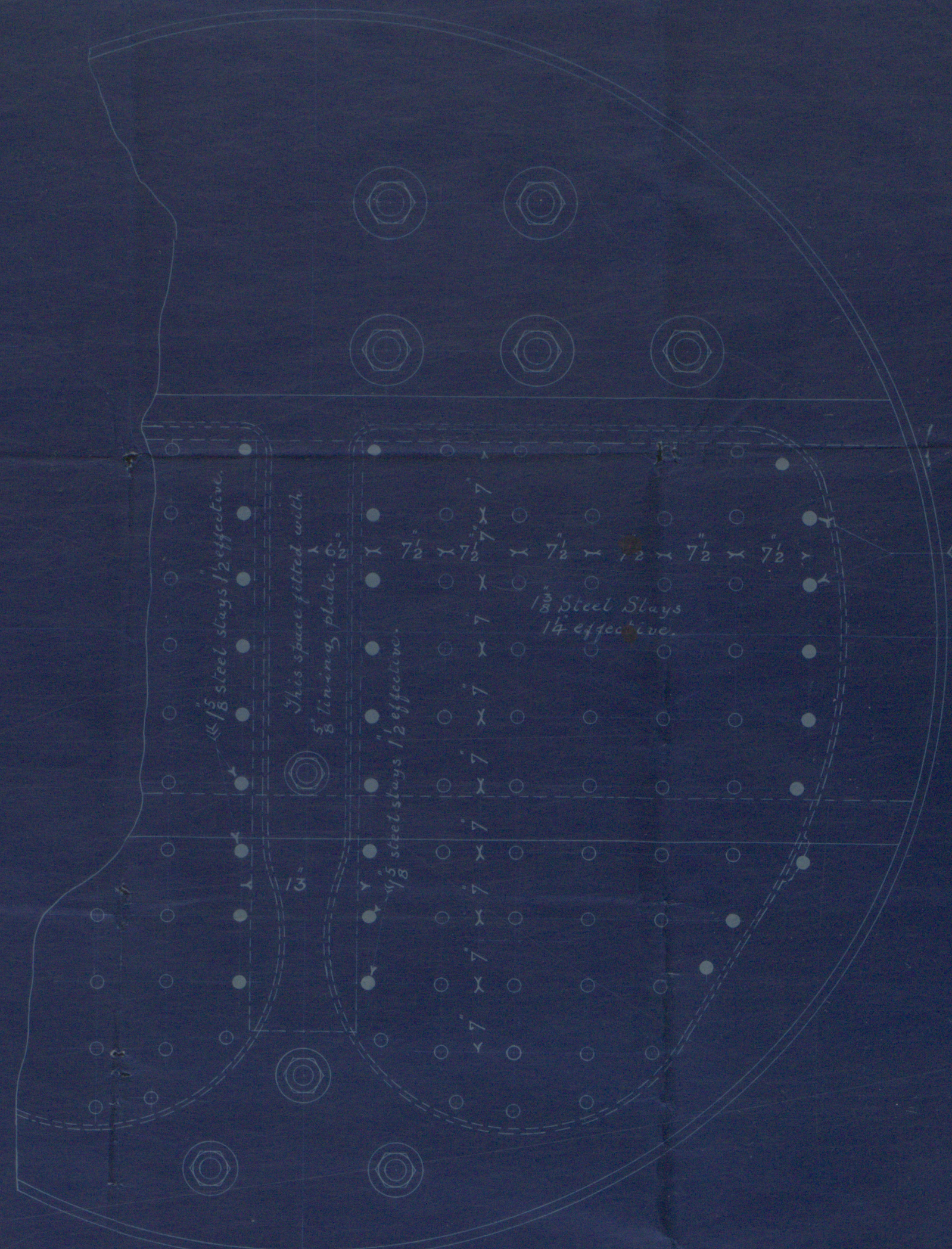
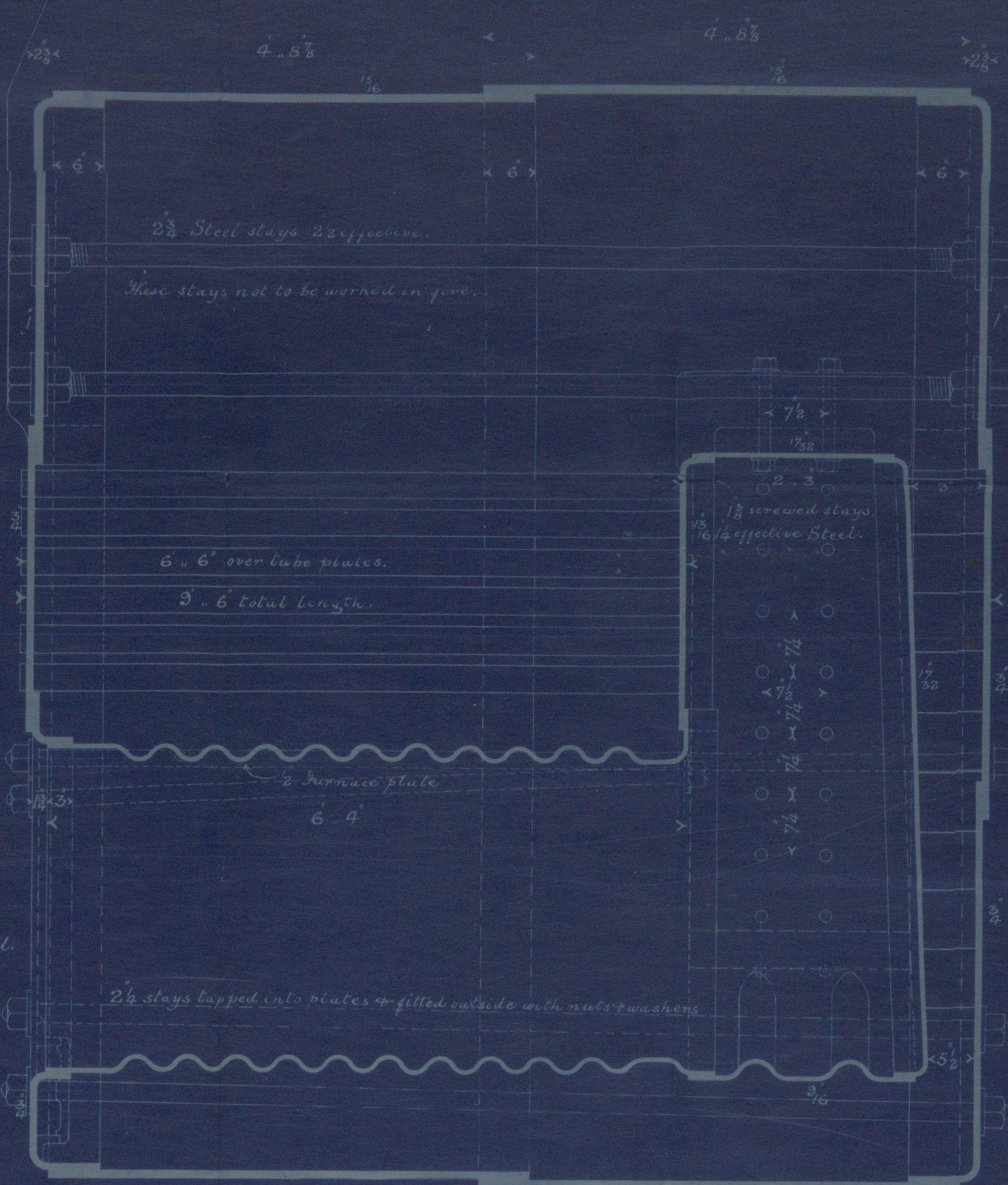


*Common tubes 3 1/2\"/>
 Stay tubes 3/8\"/>
 all screw stays fitted with nuts at each end.*

*Order stays 6\"/>
 two supporting bolts 7\"/>
 and 7\"/>
 apart.*

Note.
The stay tubes have been fitted as specified in the letter dated 26 April 1916.

Steel plates manufactured by the Steel Company of Scotland.



*1 1/2\"/>
 1 1/2\"/>
 effective.*

SCALE 1 INCH TO A FOOT

STEEL BOILERS NOS 185 & 186

CHARLES D. HOLMES & CO.
 ENGINEERS & BOILER MAKERS.

HULL

Note stay tubes
 10/20/4/86
 New Zealand
 Canada
 Hull Report No 594



© 2020

S.S. "New Zealand"
Plan of Main Boiler

N.B. Not now in the
Vessel. New Boiler fitted
See Appledore Report G.L.H.

HUL399-0009.

S.S. "New Zealand"

S.S. "Canada"

Steel Repairs to

5992 x 3.



© 2020

Lloyd's Register
Foundation