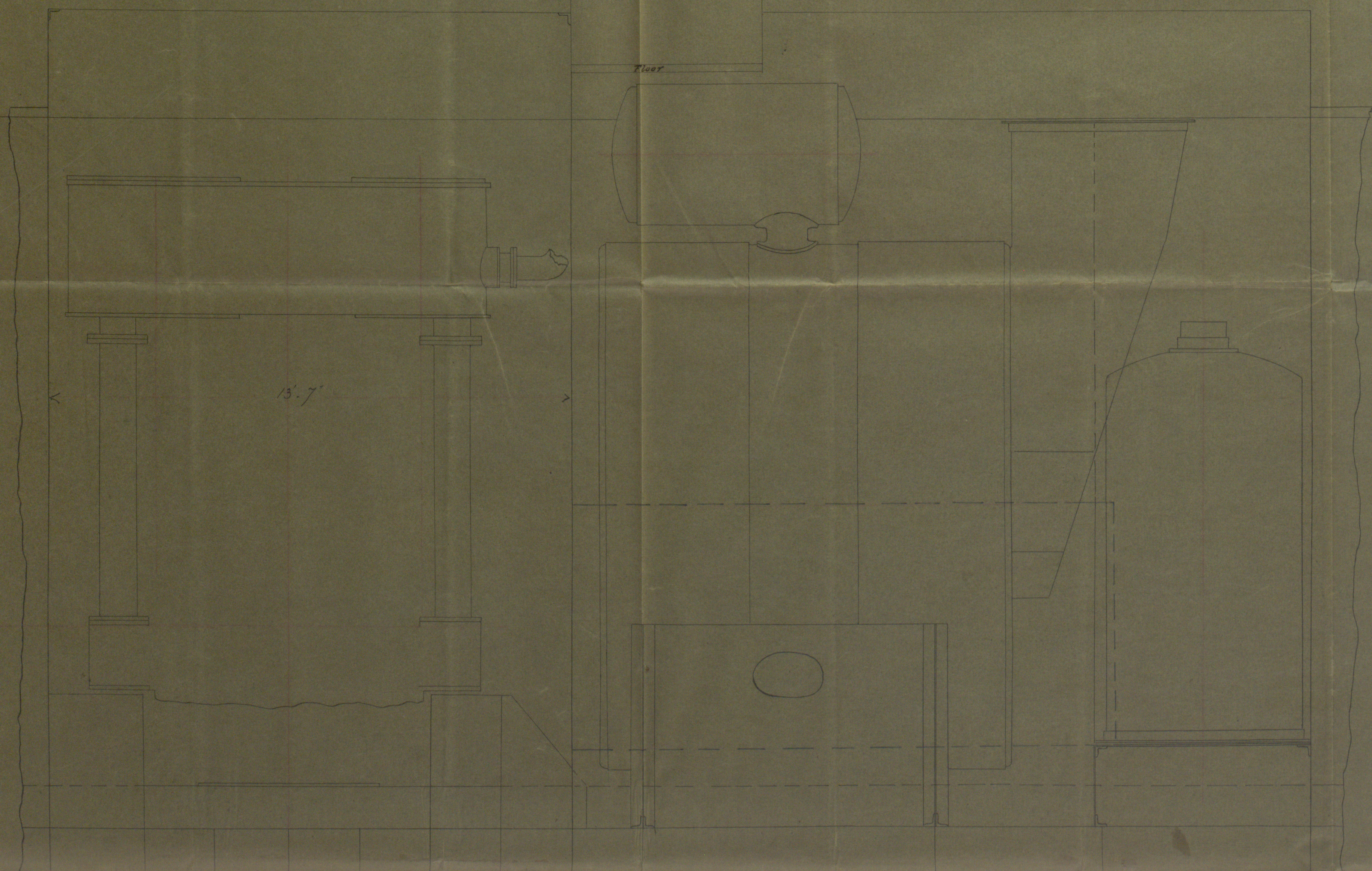


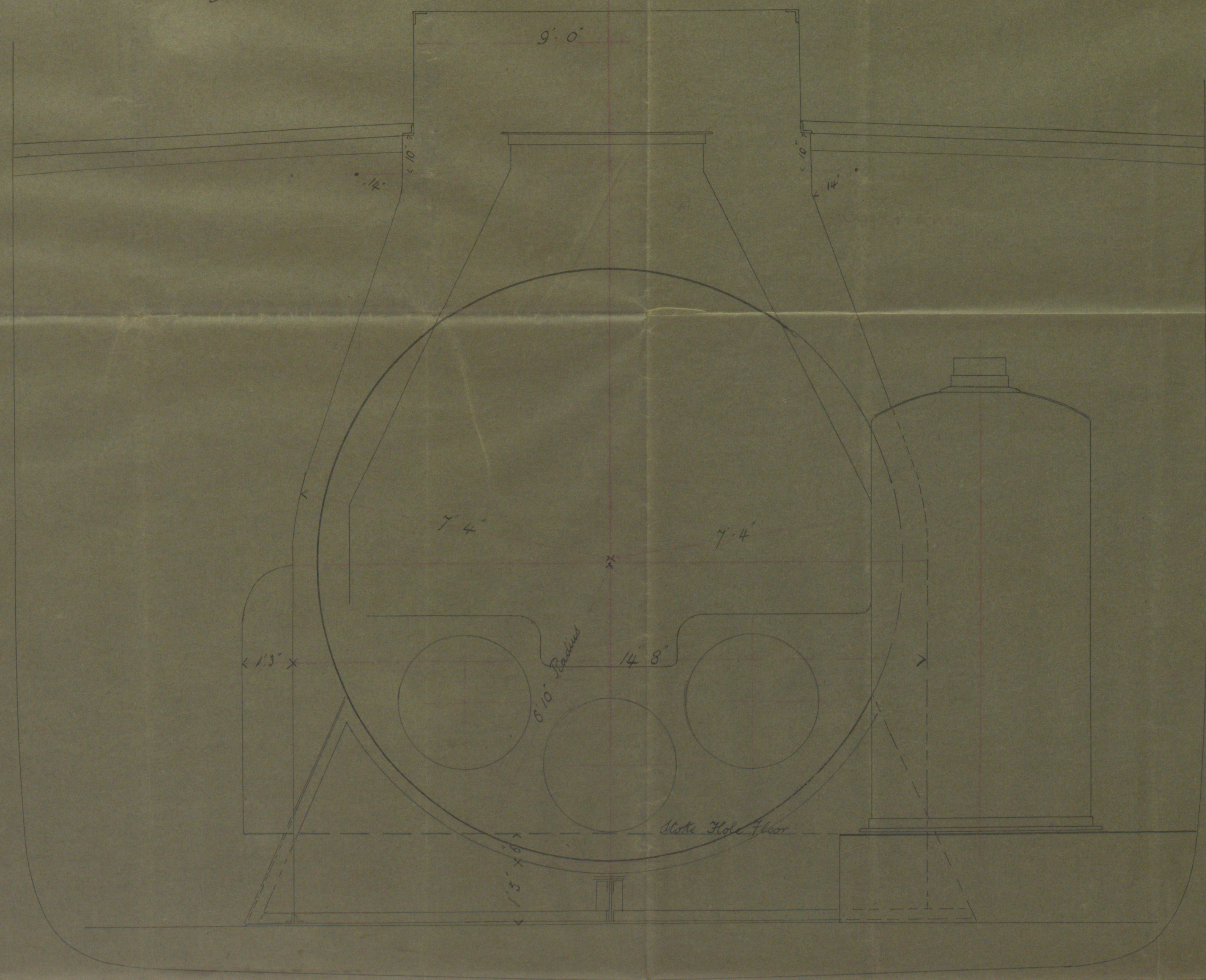
S.S. - "Paradox" - Lon No. 5675
 Hall No. 5675
 Swillington S.S.

Galley



Looking Aft.

Width of opening in deck required
 to admit Boiler 14'-6"



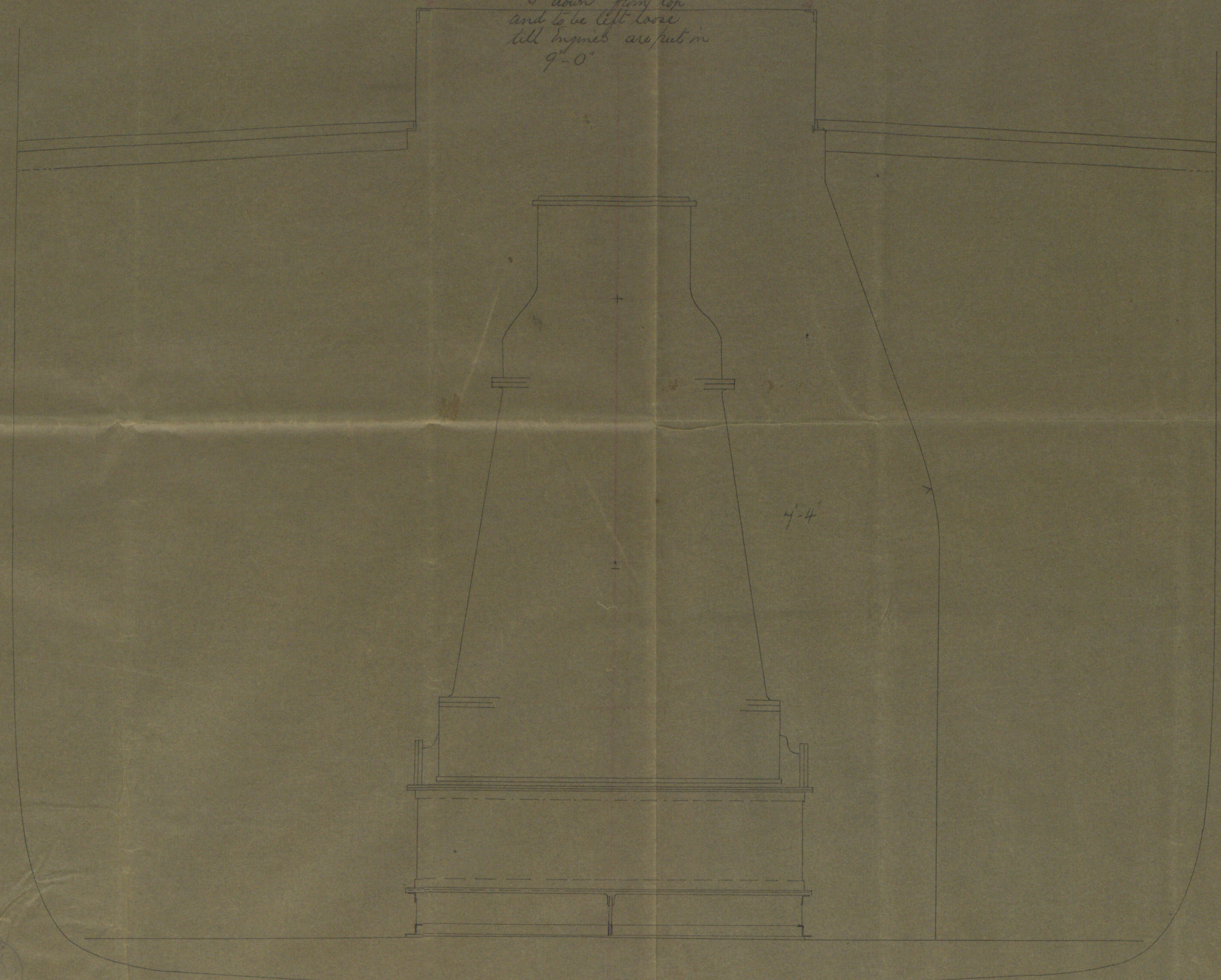
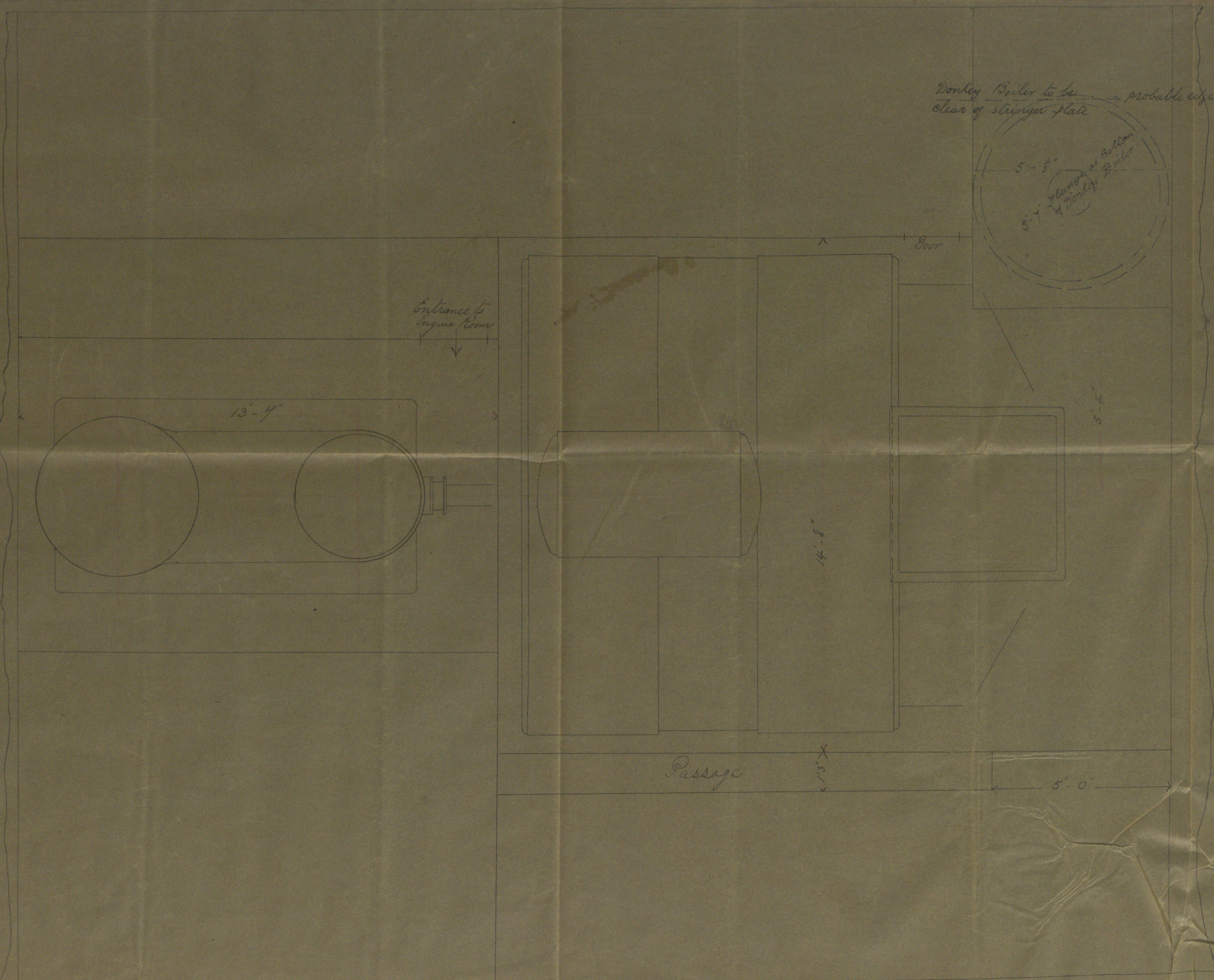
Engine & Boiler Room Arrangement of S.S. "Swillington"

Scale 1/4" = 1 foot

Looking Aft.

Single door to be
 3' deep from left
 and 4' 6" high
 all required are put on
 9'-0"

Donkey Boiler to be
 clear of stringer plate
 5'-5" diameter
 8'-7" height
 of donkey boiler
 prohibits edge of stringer plate

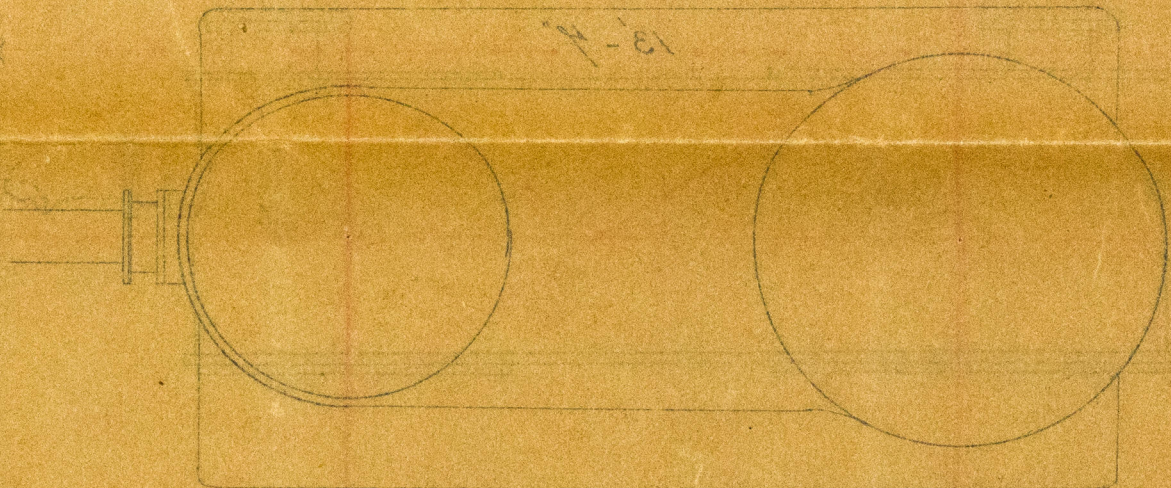


Copy
 20.5.81

Distance to
main beam



13-4



© 2020

Lloyd's Register
Foundation

HUL 397-0233