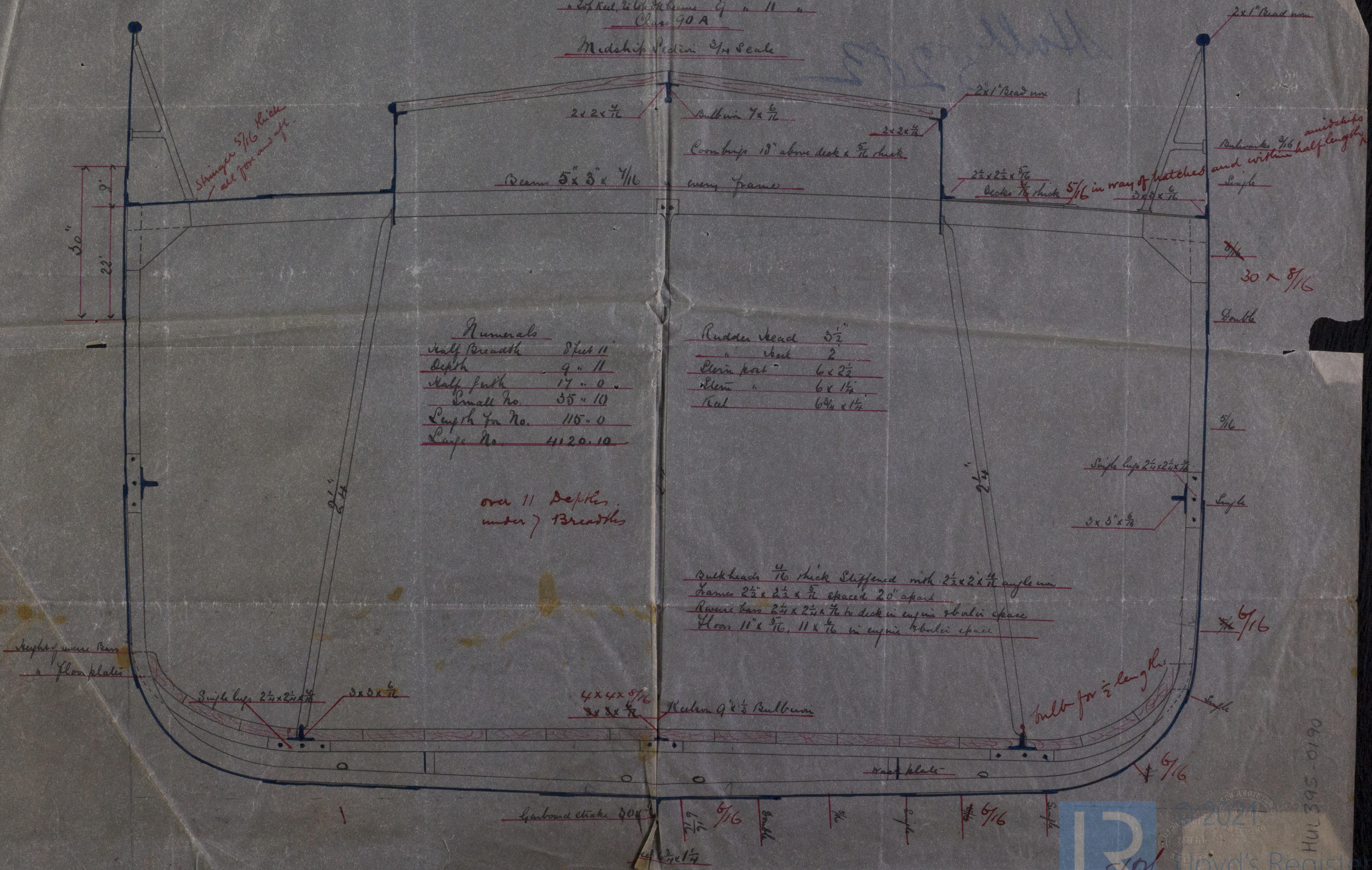


Iron Screw Steamer No- by Messrs Scarr at Beverley.
Dimensions

Length P.O.P.	115 feet
Beam moulded	17 " 9 inches
Depth moulded	9 " 4 "
" hold to floor	9 " 0 "
" top keel to top of beams	9 " 11 "
Class 90 A	

RECEIVED APR. 89.

Midship Section $\frac{3}{4}$ Scale

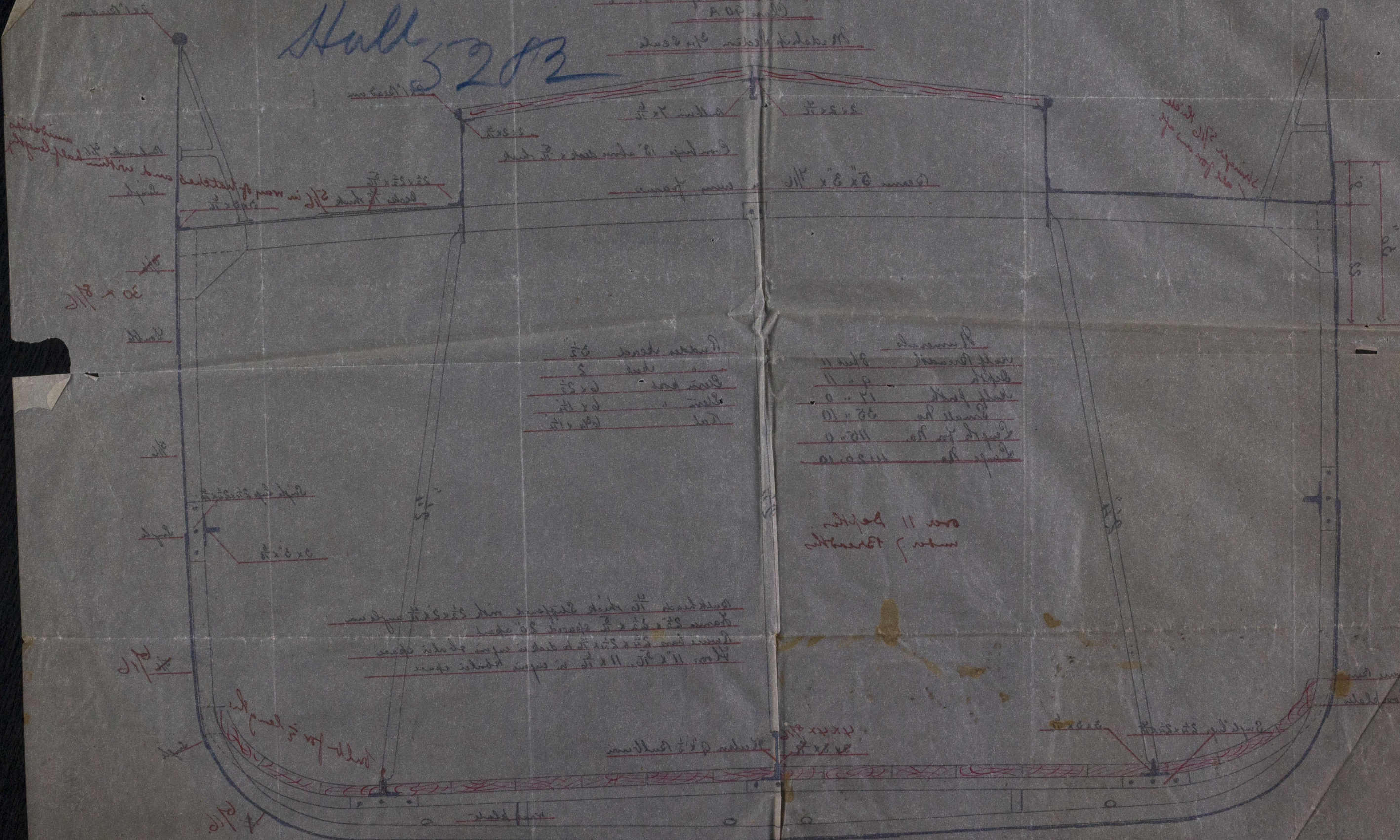


Plan of the vessel No. 114 after her launch at Boreham

Allice

Hull 5202

Length 118 feet	Beam 12 feet
Depth 12 feet	draught 12 feet
Displacement 11 tons	Speed 12 knots
Engine 12 HP	Boiler 12 sq ft
Water tank 12 cu ft	Oil tank 12 cu ft
Coal tank 12 cu ft	Provisions 12 cu ft
Water pump 12 gals/min	Oil pump 12 gals/min
Coal pump 12 gals/min	Provisions pump 12 gals/min



Length 118 feet	Beam 12 feet
Depth 12 feet	draught 12 feet
Displacement 11 tons	Speed 12 knots
Engine 12 HP	Boiler 12 sq ft
Water tank 12 cu ft	Oil tank 12 cu ft
Coal tank 12 cu ft	Provisions 12 cu ft
Water pump 12 gals/min	Oil pump 12 gals/min
Coal pump 12 gals/min	Provisions pump 12 gals/min

over 11 feet

Water tank 12 cu ft

