

STEEL BOILER No 249

for the Iron Screw Steamer "Hollander's" Hull Report No. 5202.

WORKING PRESSURE 85 lbs.

Dec 23rd 1881

SCALE 1 INCH = 1 FOOT

DIMENSIONS

LENGTH OF FIRE BARS	
AREA OF FIRE GRATE	
DIAM OF TUBES OUTSIDE	3"
LENGTH OF TUBES	12'-6"
NO OF TUBES	274
SURFACE OF TUBES	1850
TOTAL HEATING SURFACE	2280
WORKING PRESSURE	85 lbs
DIAM OF SAFETY VALVE	



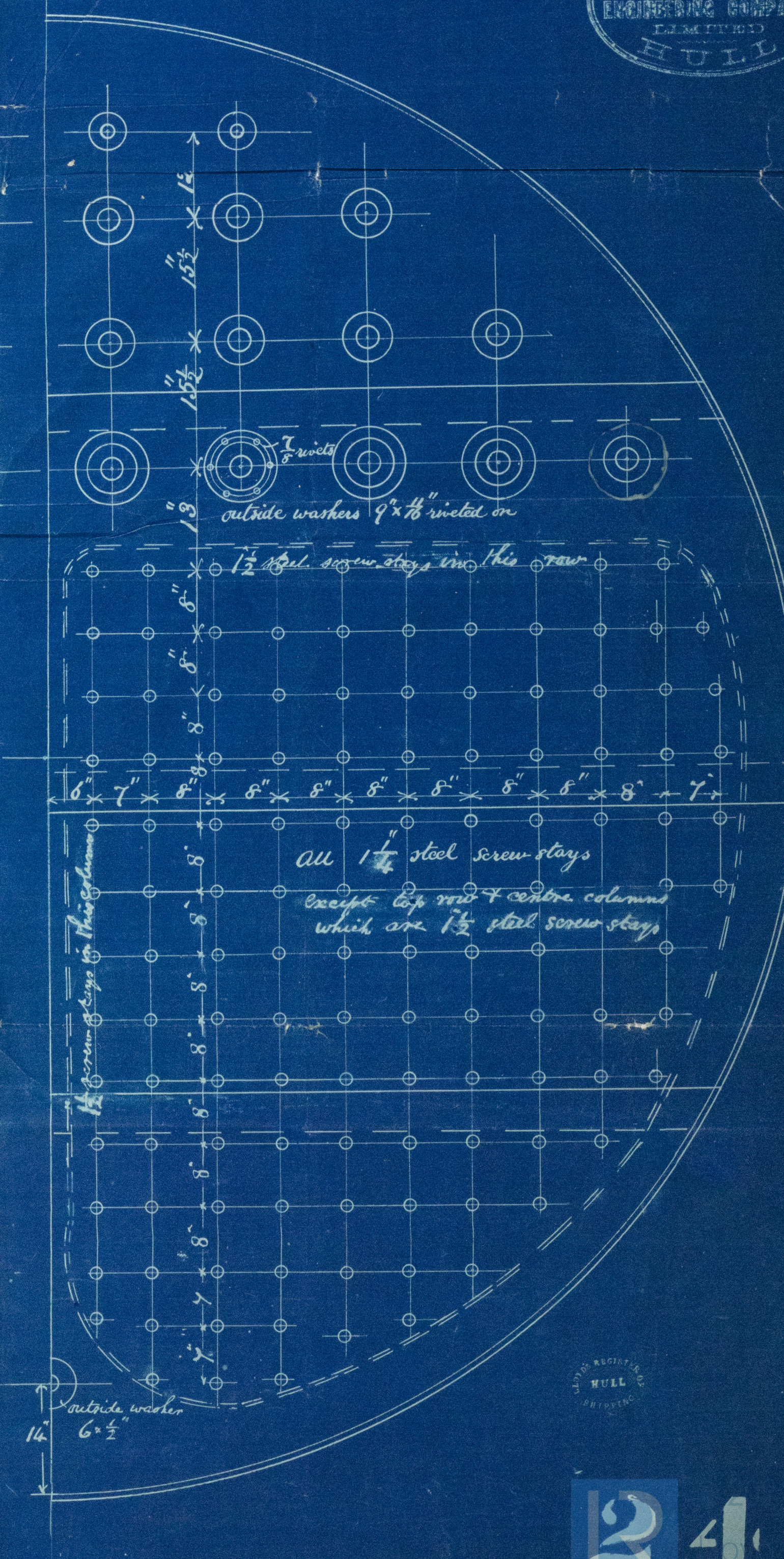
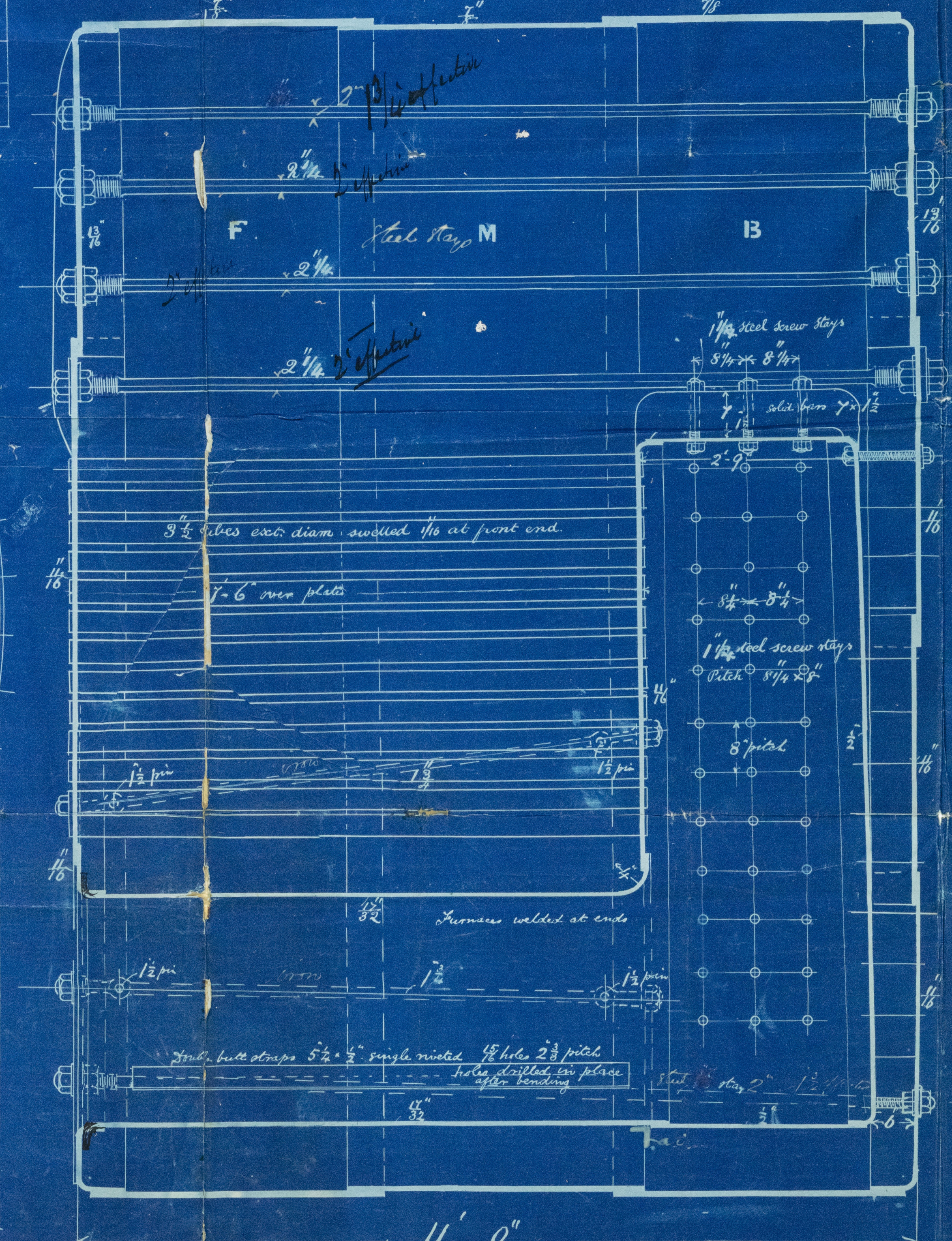
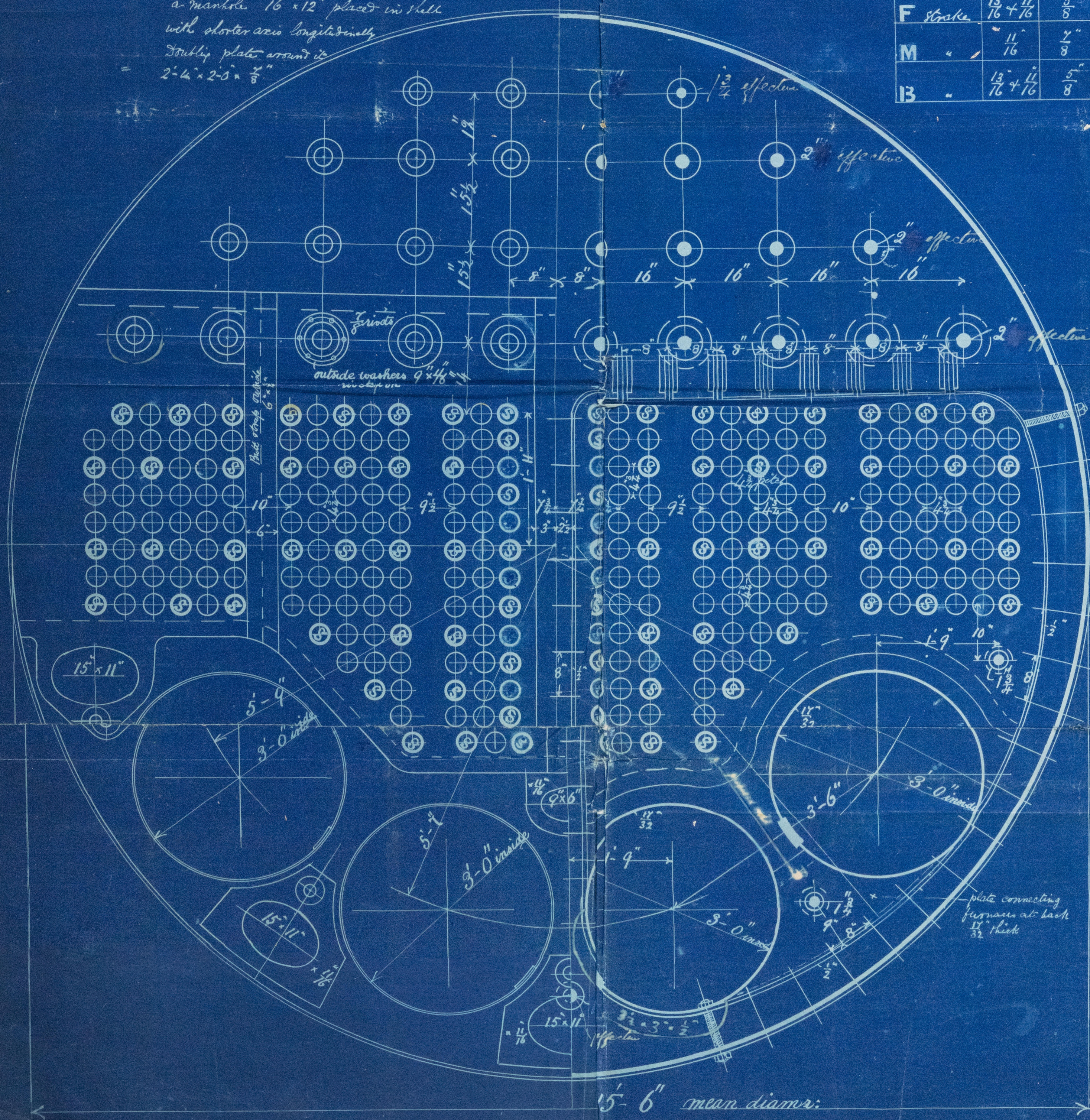
Note.
The plates and rivets to be made of Siemens steel.
The plates to be made by the firm of John Brown & Co. Sheffield.

All the rivet holes in the shell and furnace to be drilled in place after bending the plate all punched and flanged plates to be annealed after punching and flanging. All the stays steel except those joined by sides of furnace.

The seams given are effective.
The steel stays (screws) are 1 1/2" full and 1 1/8" effective diam.
They are screwed into both plates and nutted each end.
The tubes are of iron. The stay tubes being 3" in diameter and 1/2" effective thickness. They are screwed into each tube plate.
The front tube plate is in 4 pieces. The seams be formed of an outside butt strap 6" x 3/4" in place with shorter axis longitudinally.
Doubtless plate around it 2'-4" x 2'-5" x 3/8".

Butt straps

	inside	outside
F Stays	13/16 x 11/16	5/8"
M "	11/16	7/8"
B "	13/16 x 11/16	5/8"



ss. "Ashgrove"

HUL395-0076



© 2021

Lloyd's Register
Foundation