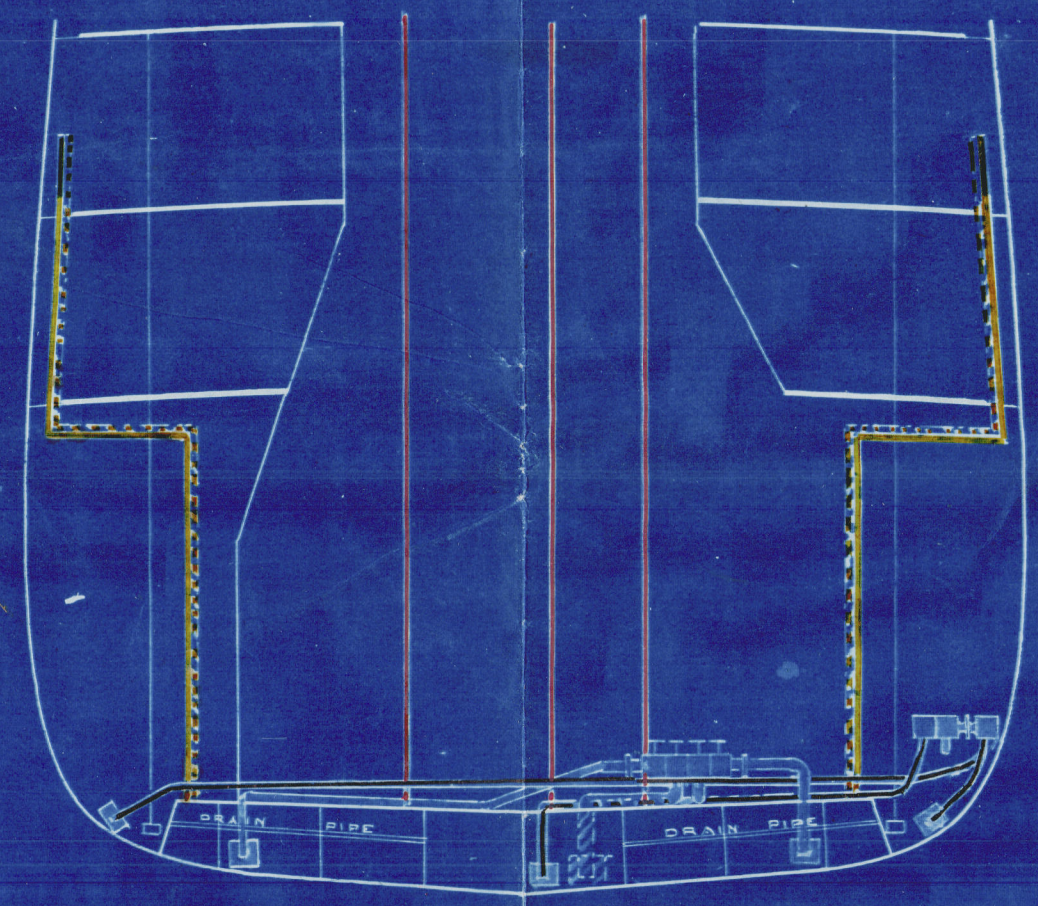


Iron Steam Steamer 'Queen Monarch' Hull Report No. 5182.

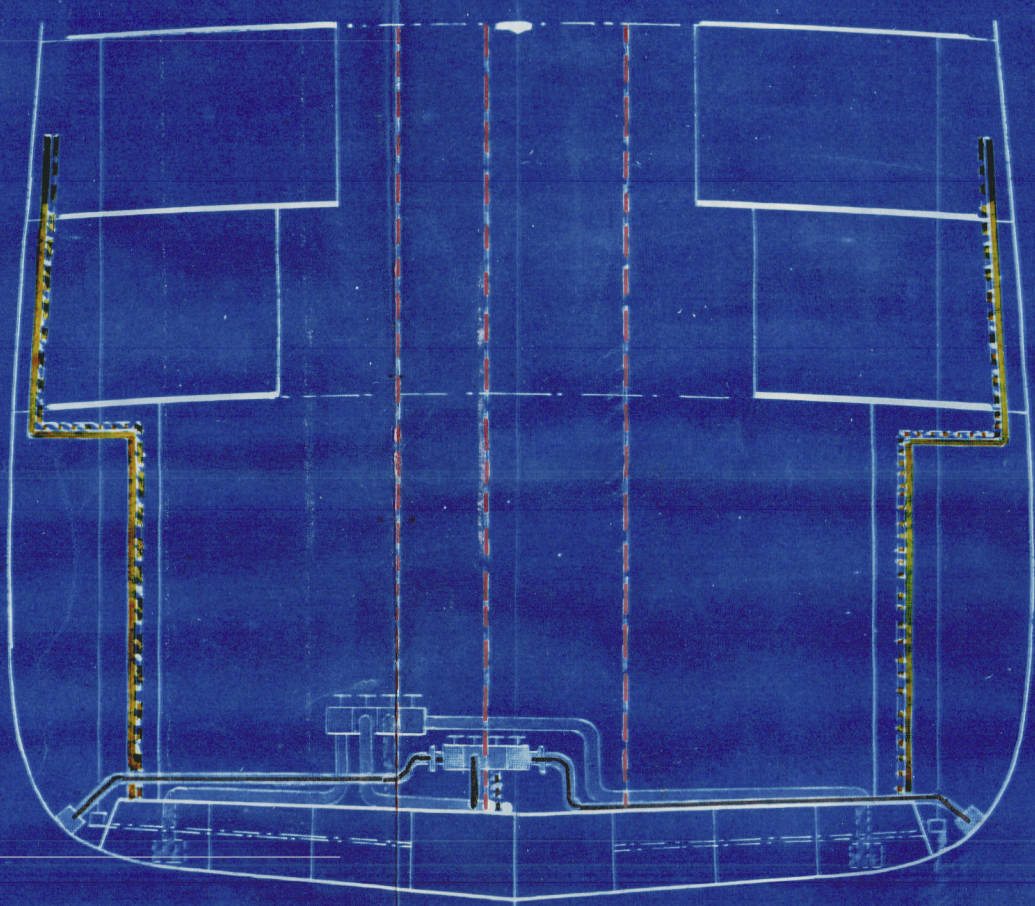
10/3/1882
10/4/1882
10/5/1882
10/6/1882
10/7/1882
10/8/1882
10/9/1882
10/10/1882
10/11/1882
10/12/1882
10/13/1882
10/14/1882
10/15/1882
10/16/1882
10/17/1882
10/18/1882
10/19/1882
10/20/1882
10/21/1882
10/22/1882
10/23/1882
10/24/1882
10/25/1882
10/26/1882
10/27/1882
10/28/1882
10/29/1882
10/30/1882
10/31/1882
11/1/1882
11/2/1882
11/3/1882
11/4/1882
11/5/1882
11/6/1882
11/7/1882
11/8/1882
11/9/1882
11/10/1882
11/11/1882
11/12/1882
11/13/1882
11/14/1882
11/15/1882
11/16/1882
11/17/1882
11/18/1882
11/19/1882
11/20/1882
11/21/1882
11/22/1882
11/23/1882
11/24/1882
11/25/1882
11/26/1882
11/27/1882
11/28/1882
11/29/1882
11/30/1882
12/1/1882
12/2/1882
12/3/1882
12/4/1882
12/5/1882
12/6/1882
12/7/1882
12/8/1882
12/9/1882
12/10/1882
12/11/1882
12/12/1882
12/13/1882
12/14/1882
12/15/1882
12/16/1882
12/17/1882
12/18/1882
12/19/1882
12/20/1882
12/21/1882
12/22/1882
12/23/1882
12/24/1882
12/25/1882
12/26/1882
12/27/1882
12/28/1882
12/29/1882
12/30/1882
12/31/1882

No 241
PUMPING ARRANGEMENT
1/8TH SCALE

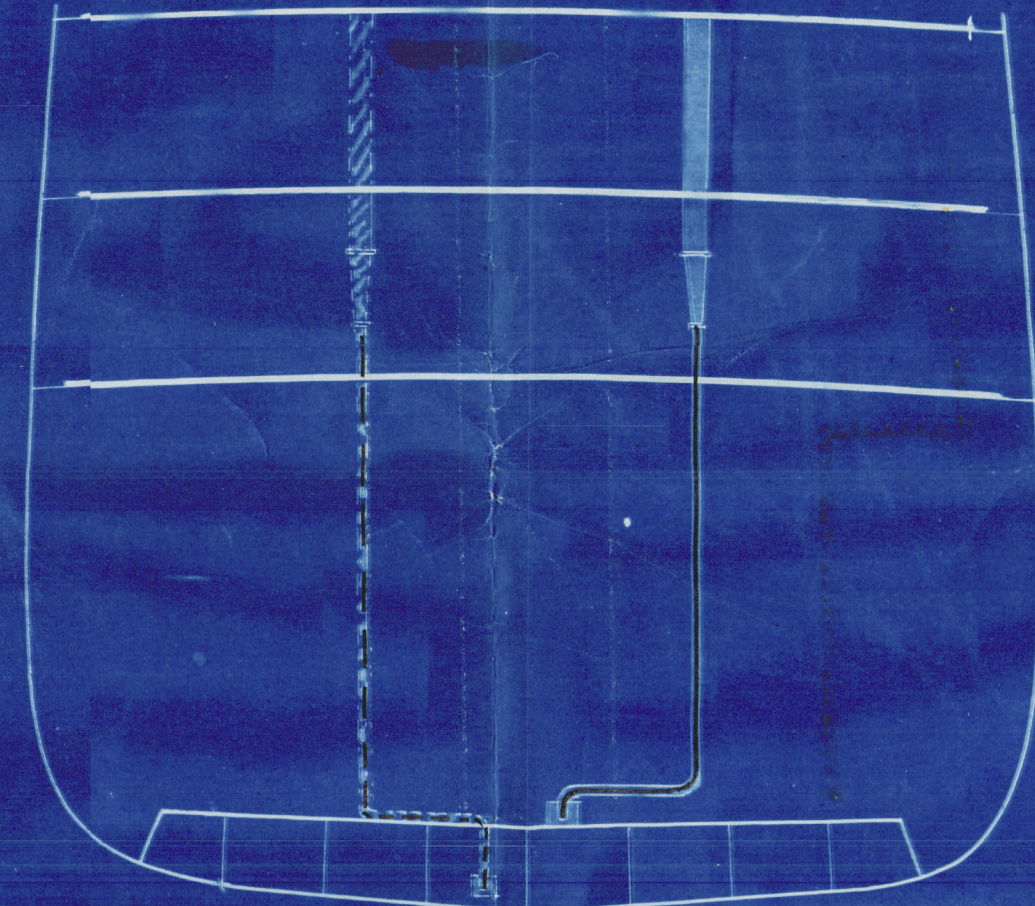
DAVIES SHIPBUILDING
&
ENGINEERING COMPANY,
LIMITED.
HULL.



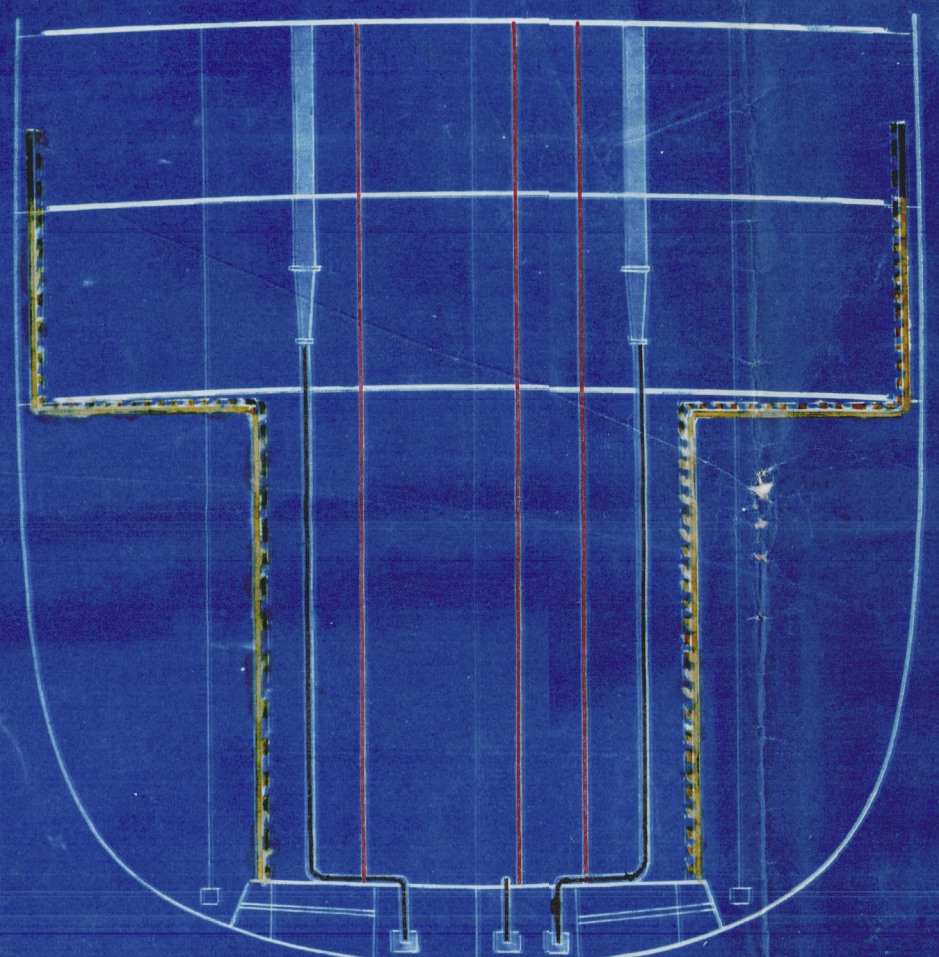
SECTION ON 57 FRAME



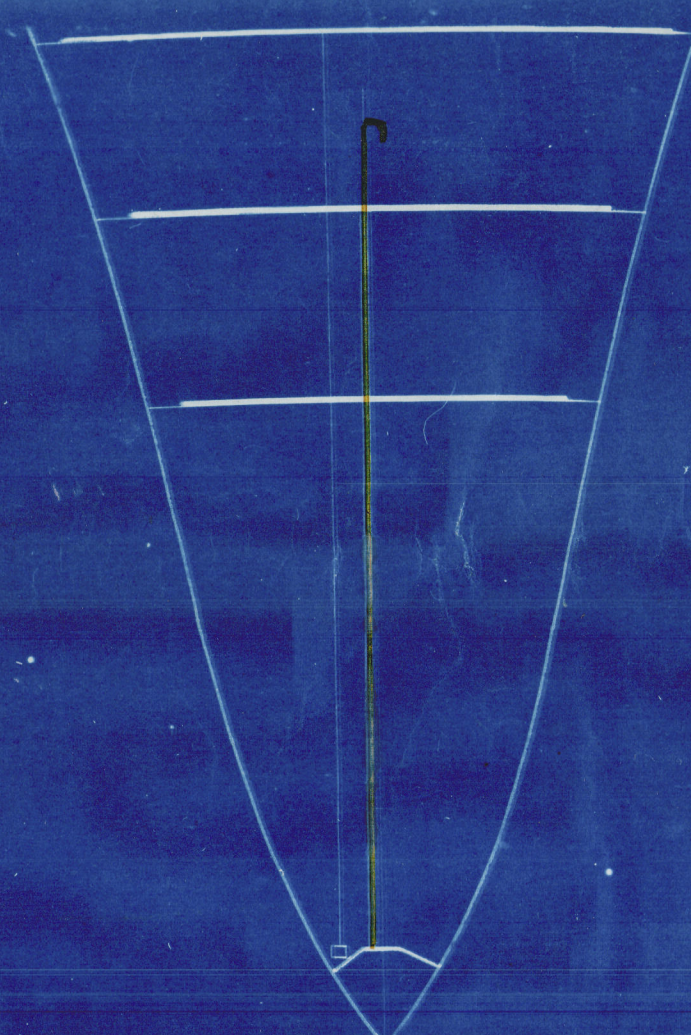
SECTION ON 93 FRAME



SECTION ON 139 FRAME

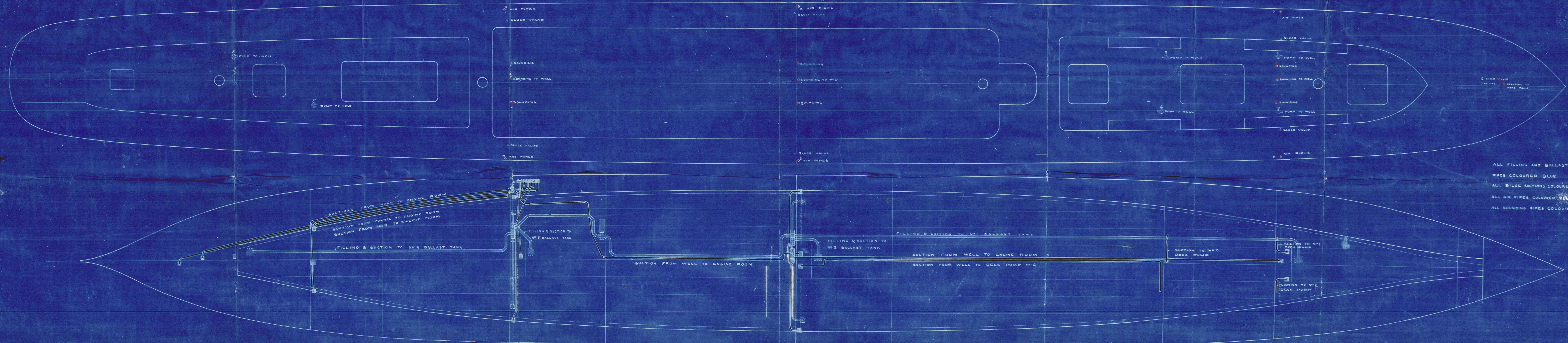
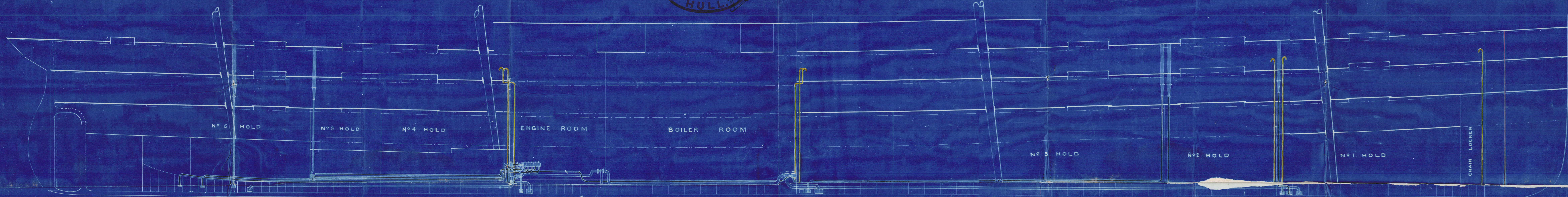


SECTION ON 153 FRAME



SECTION ON 179 FRAME

DAVIES SHIPBUILDING
&
ENGINEERING COMPANY,
LIMITED.
HULL.



ALL FILLING AND BALLAST SUCTION
PIPES COLOURED BLUE
ALL BILGE SUCTIONS COLOURED BLACK
ALL AIR PIPES COLOURED YELLOW
ALL SOUNDING PIPES COLOURED RED