

Gray 16<sup>e</sup>

h<sup>e</sup> 618.

Shenpthermiz in  
ivar of coalmin  
work in bridge side.

"Kouijistan"

Hpl Report No 11285

HPL390-0044



© 2019

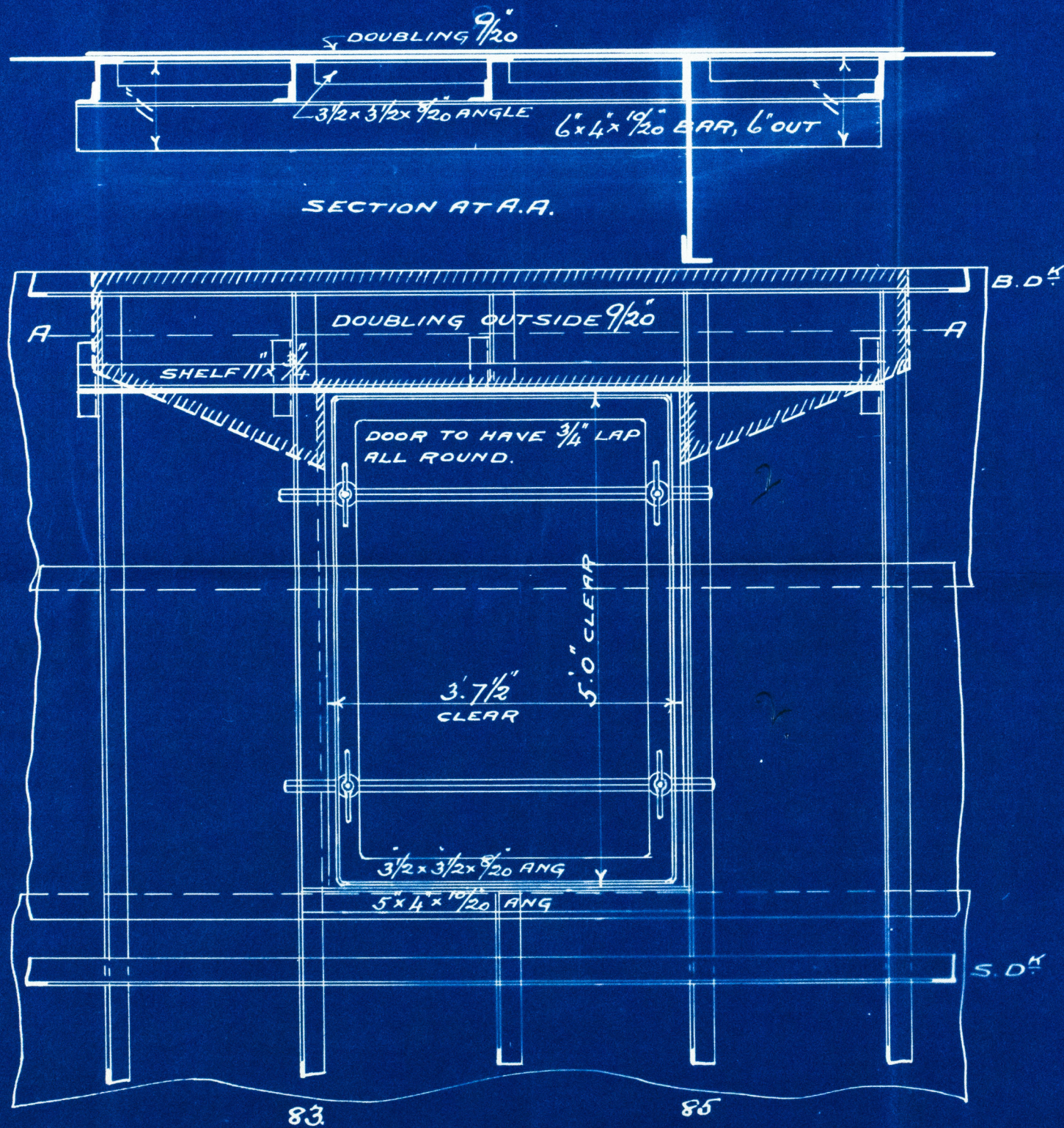
Lloyd's Register  
Foundation



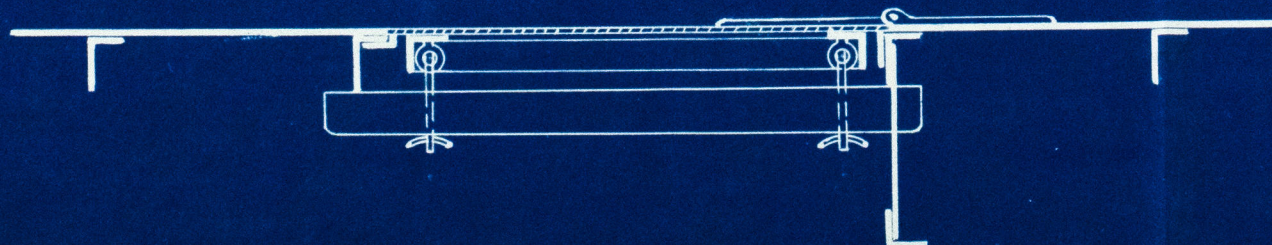
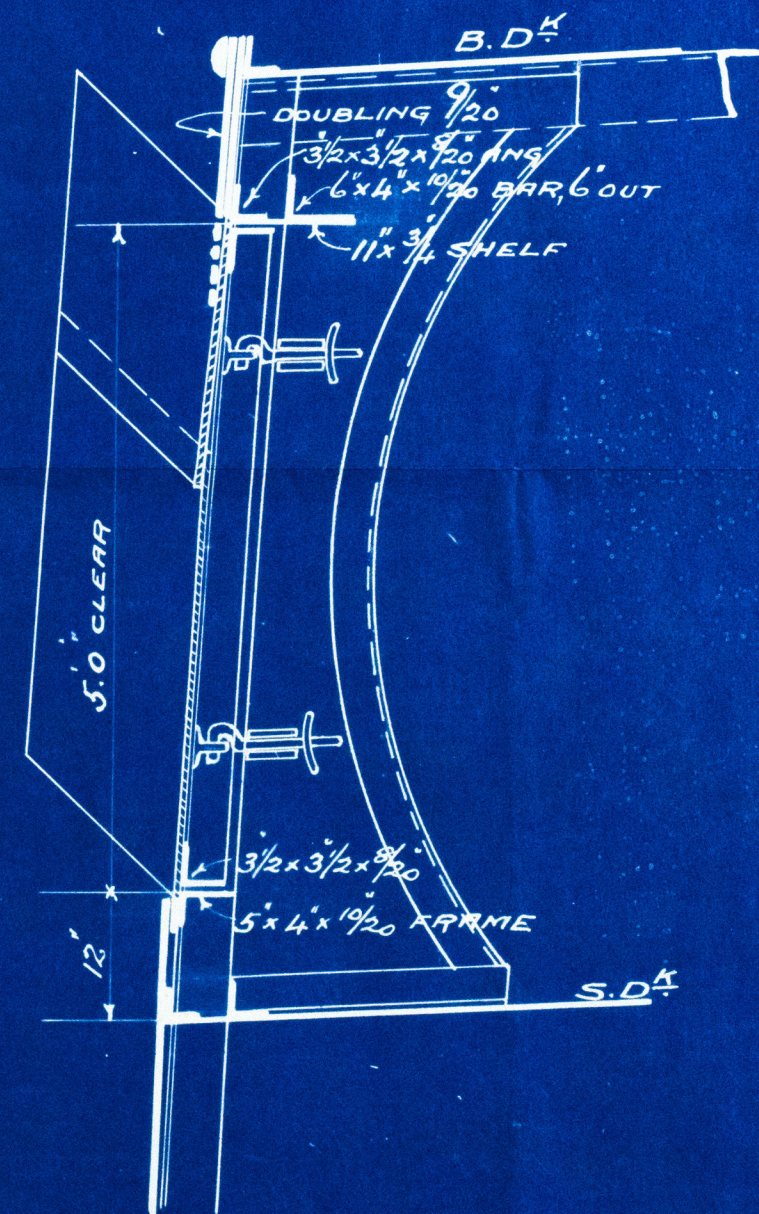
# COAL PORTS INTO BRIDGE TWEEN DECKS.

S.S.Nº 613.

SCALE  $\frac{3}{4}$ " = 1 FOOT.



PORT AS SEEN FROM INSIDE OF VESSEL



© 2019

Lloyd's Register

342-0046