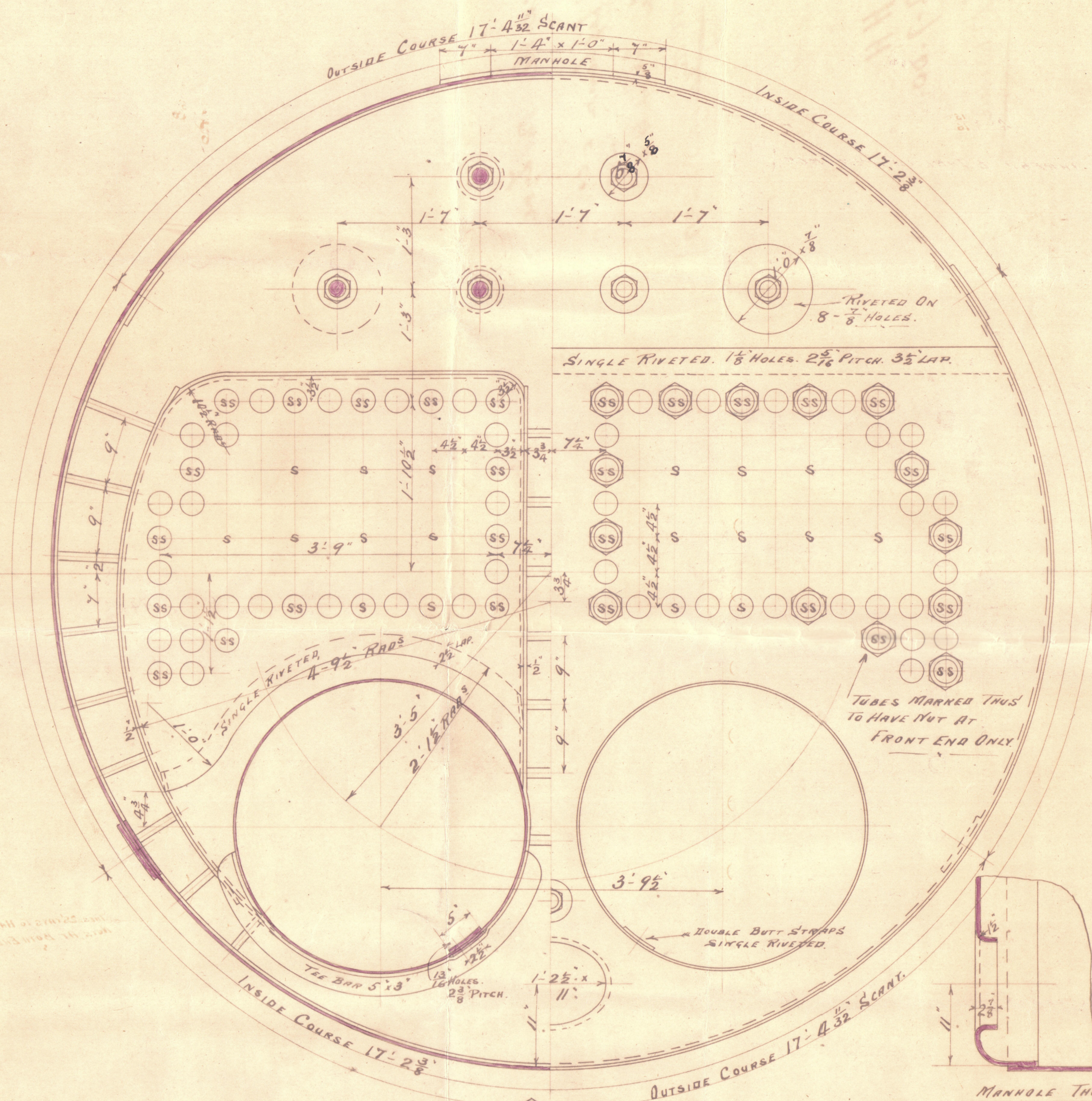
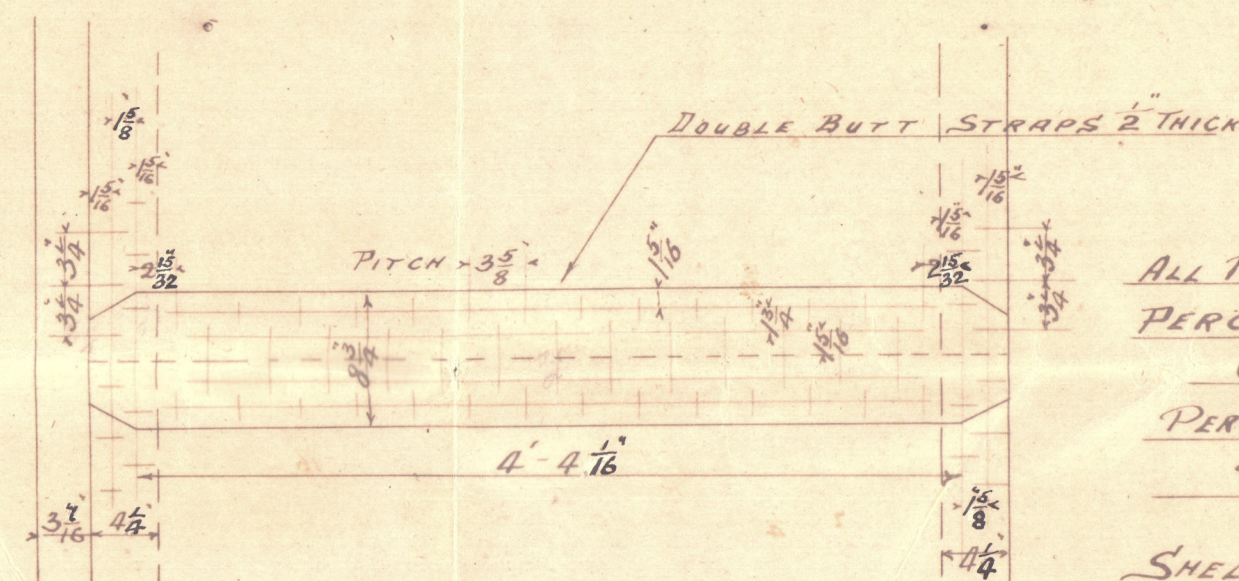


Apr 25: 5:00



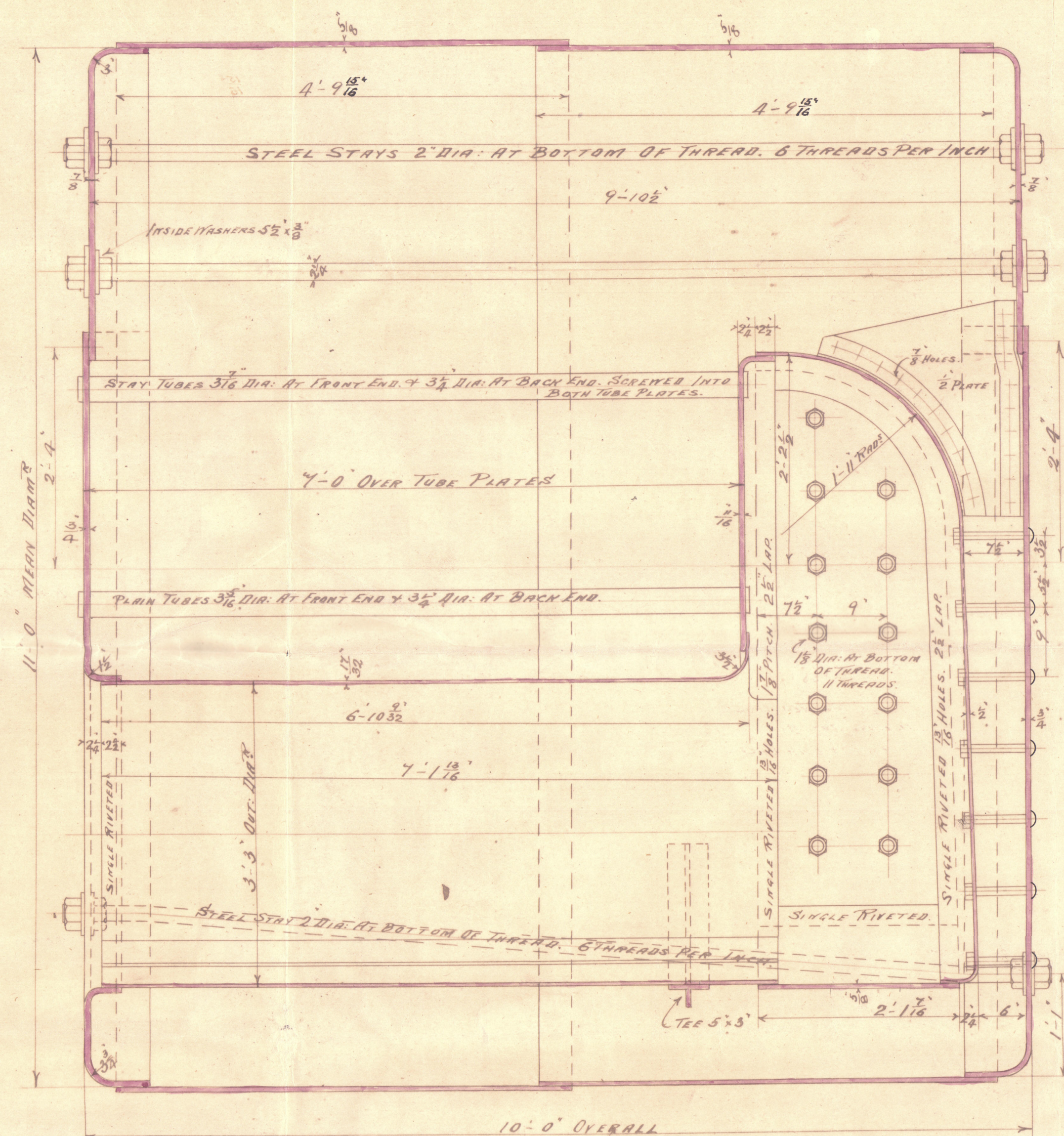
(S6) 28 STAY TUBES MARKED TRUS. $\frac{1}{2}$ " THICK AT BOTTOM OF THREAD.
 (S) 18 " " " " " $\frac{1}{4}$ " " " " " " "
 110 PLAIN TUBES N° 9 B.H.G.
 TOTAL 156 TUBES $3\frac{1}{4}$ " OUT. DIA.



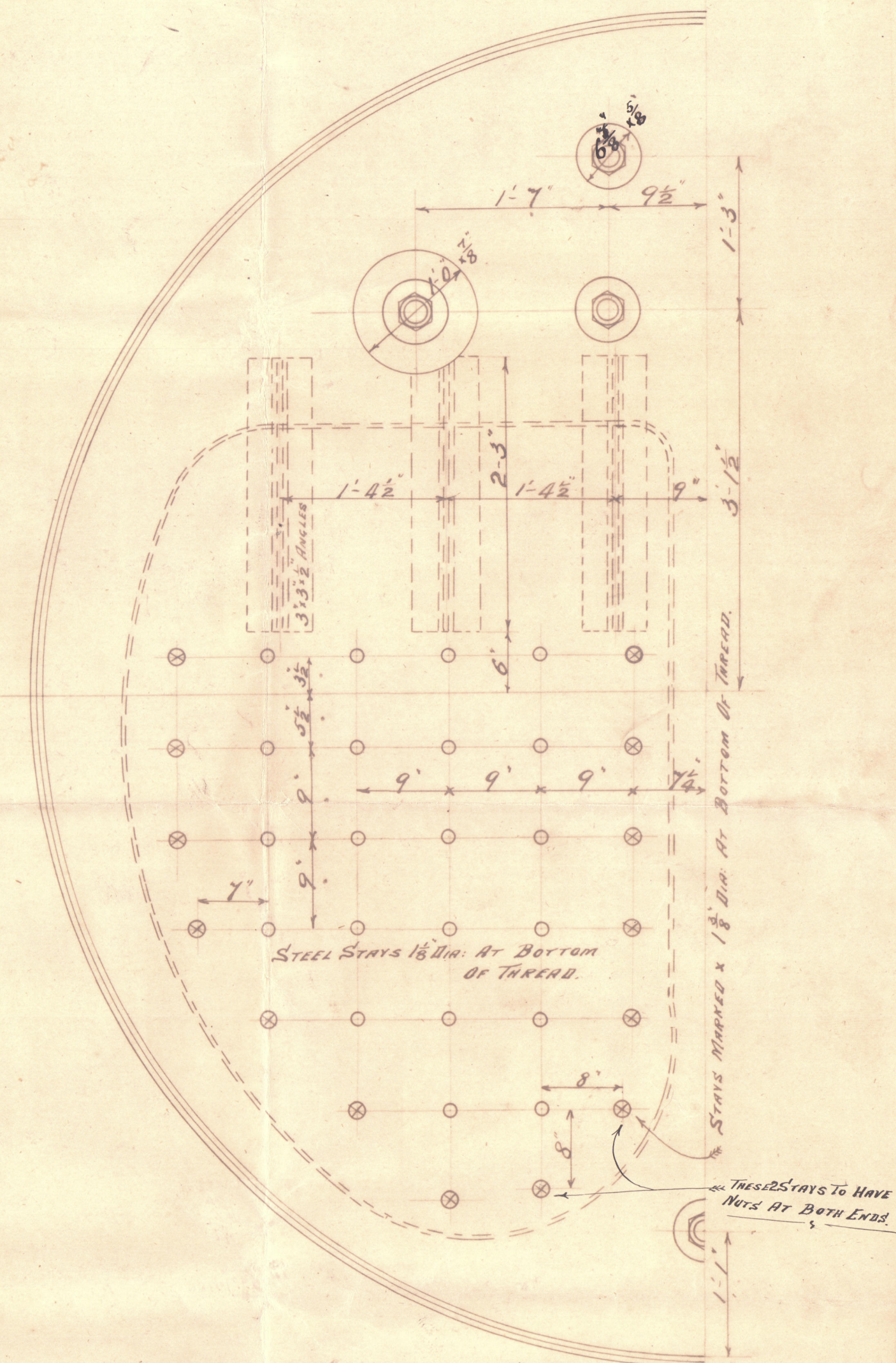
ALL RIVET HOLES IN SHELL 7/16" IN:
PERCENTAGE OF LONGITUDINAL SEAMS - 75.86.
CIRCUMFERENTIAL SEAMS
PERCENTAGE OF PLATE = 73.07
" " RIVETS = 50.8
SHELL 28 TO 32 TONS.

WORKING PRESSURE TO BE 90 LBS PER SQ. INCH.
TESTED TO 180 LBS PER SQ. INCH BY HYDRAULIC PRESSURE
ALL HOLES TO BE DRILLED IN PLATES WHEN PUT
TOGETHER, THEN TAKEN APART, THE BURR TAKEN OFF & THE
HOLES SLIGHTLY COUNTERSUNK FROM THE OUTSIDE.

ALL PLATES & RIVETS OF STEEL
TUBES OF IRON.



1 STEEL BOILER THUS.
TO LLOYDS & BOARD OF TRADE



THESE 2 STAYS TO HAVE
NUTS AT BOTH ENDS

69.
25-5-00

LH 11
24/5/00

DONKEY BOILER NO 448.

S. S. N^o 249.

Ship Built by Messrs Furness, Witherby & Co
West Hartlepool

8351

6-0

ROBERT STEPHENSON & CO. LTD.
ENGINEERS
22-6-1900
SHIP BUILDERS
HEBBURN-ON-TYNE

Leeds Regd
Chandlery

ENCLOSURE

From ROBERT STEPHENSON & CO., Ltd.,
for

Lloyds Registry

NPL390-0018(1/2)

Newcastle on Tyne

R^d Stephenson & Co

Boiler No 448.

Witby
Furness Works Ltd. S.S. 249

No 5824 -
Lloyds Test
180 lb
J H H
18-7-00.

Sp^{ts} Anarima



Indt report M 2934

Hpl 11282



HPL390-0018(2/2)



© 2020

Lloyd's Register
Foundation