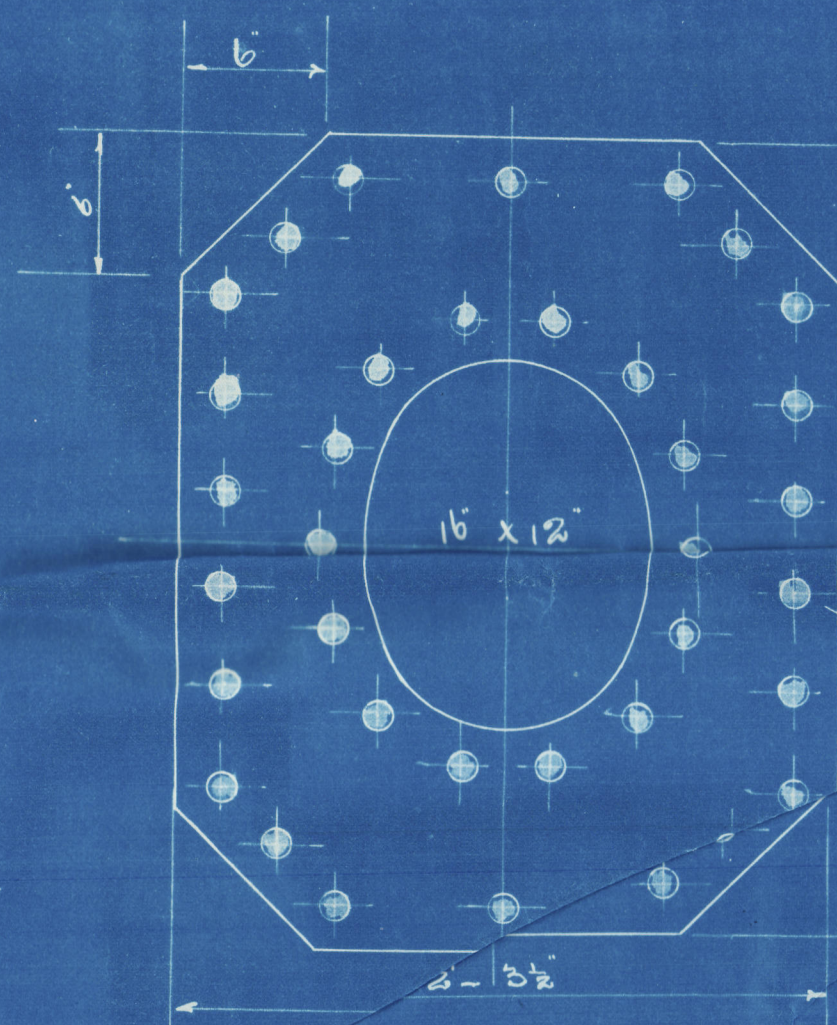
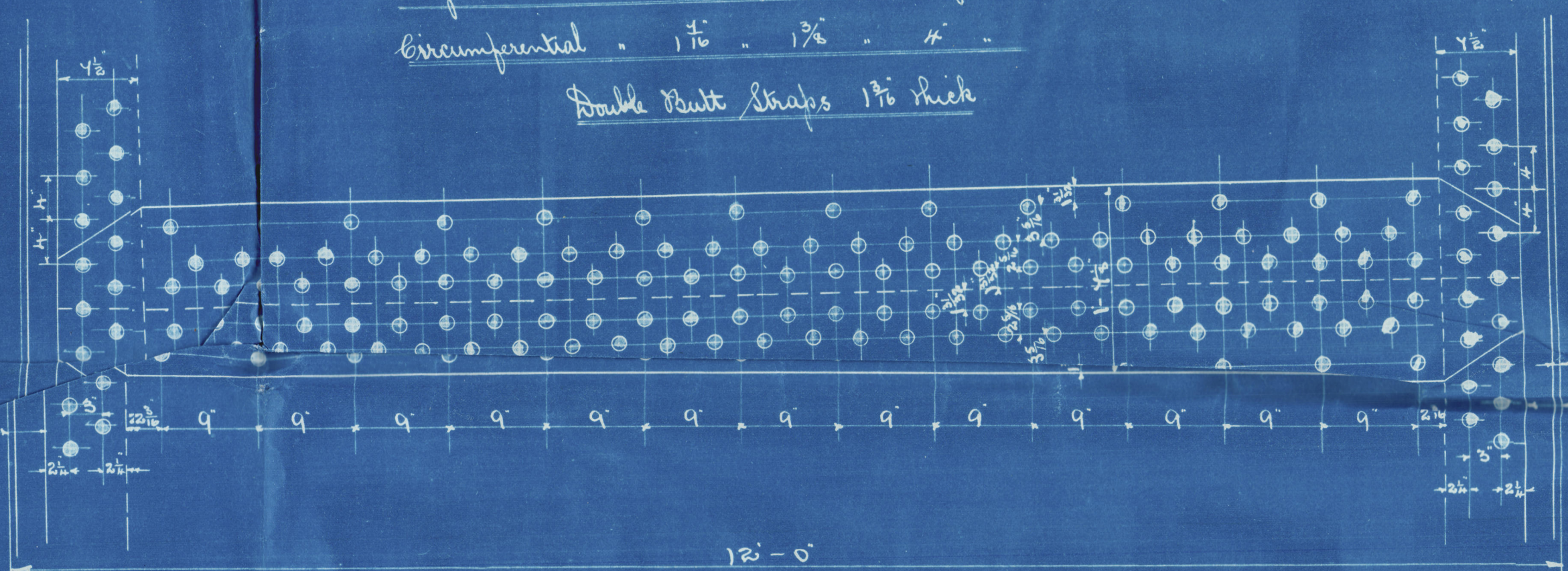


REGISTER OF
SCOTLAND
LONDON
2.8.98



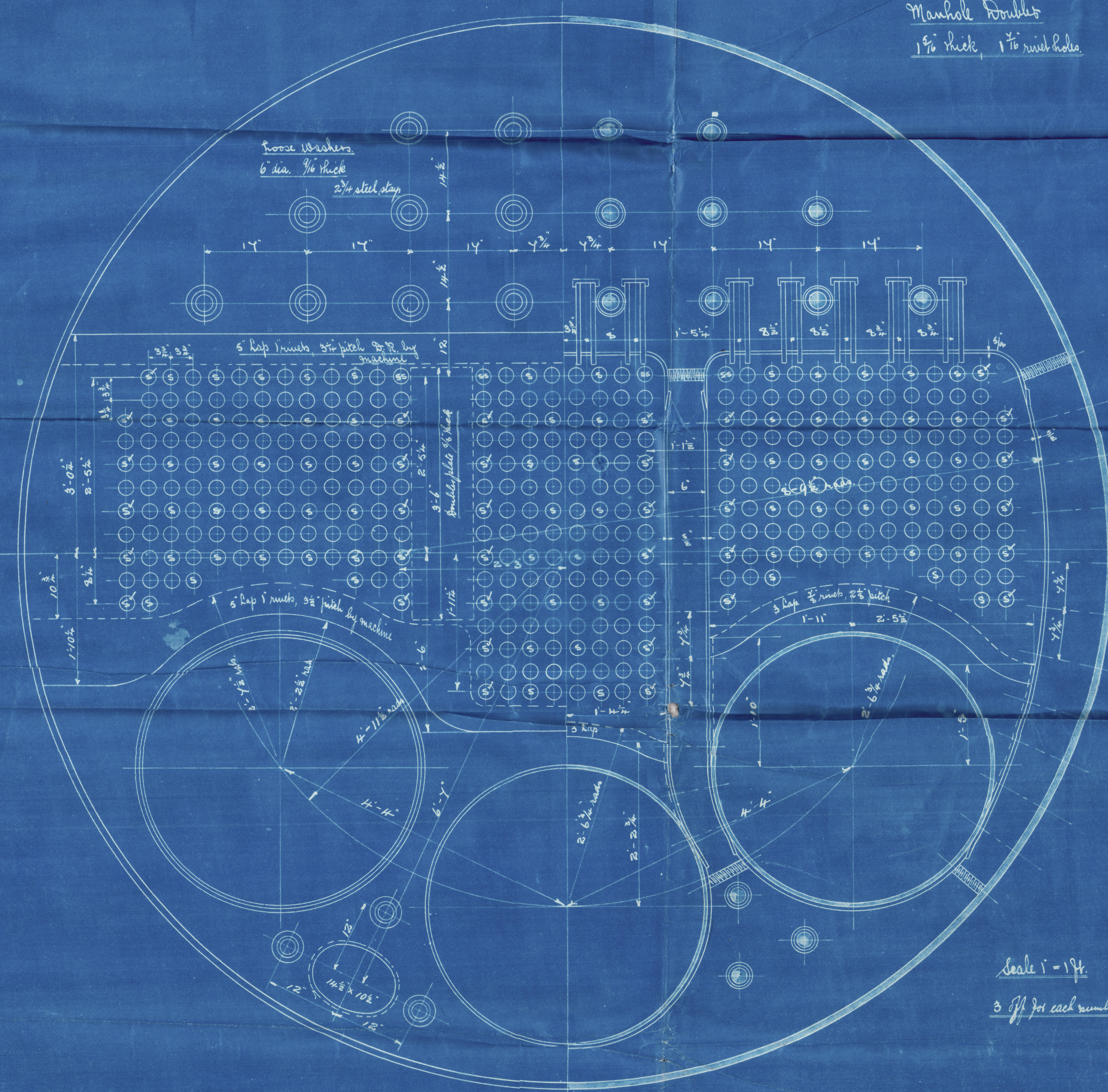
Manhole Doubler
1 1/2" thick, 1 1/2" rivet holes

Longitudinal beams 1 1/2" holes, 1 1/2" rivets, 9" pitch
Circumferential 1 1/2" - 1 3/4" - 4"
Double Butt Straps 1 1/2" thick

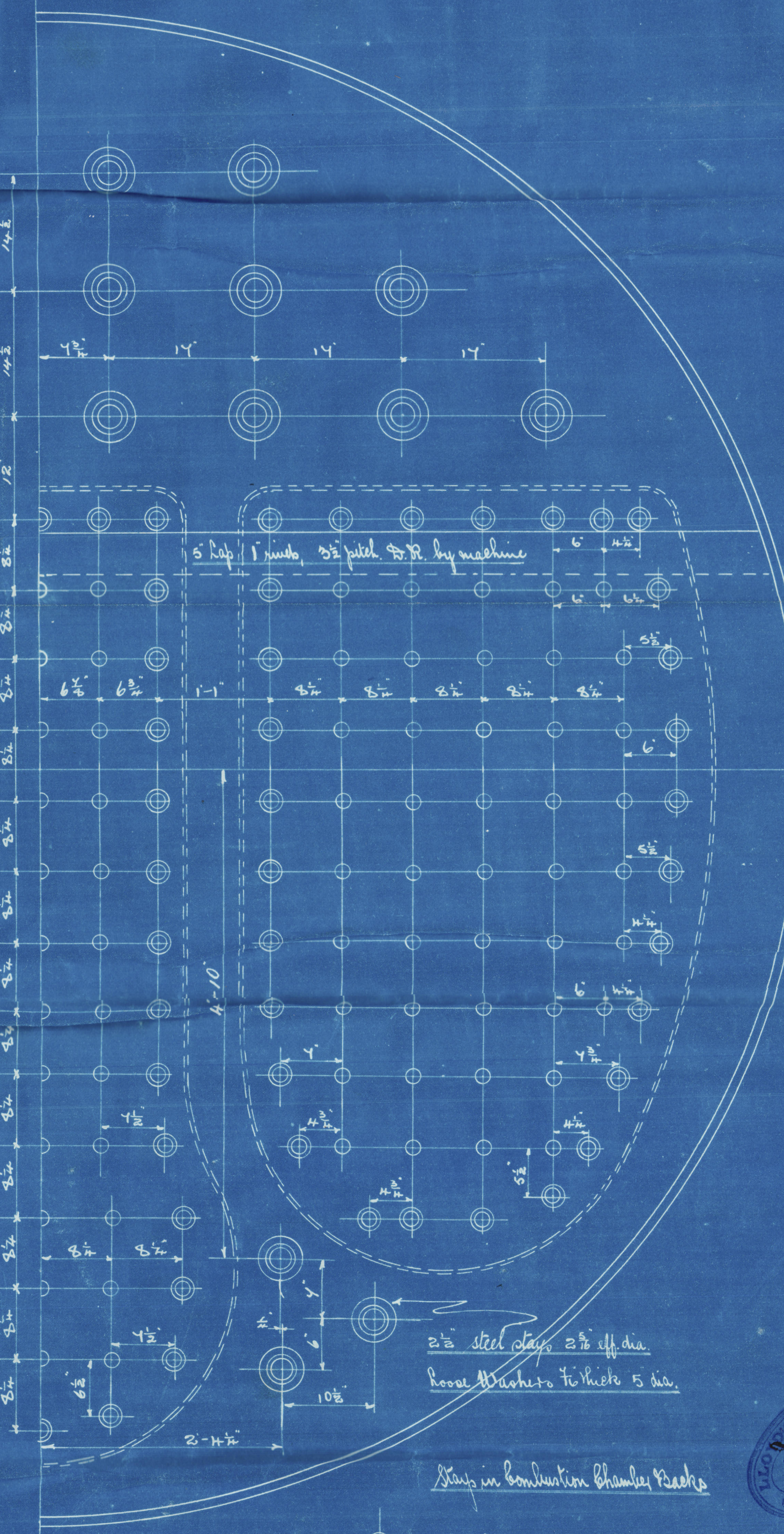
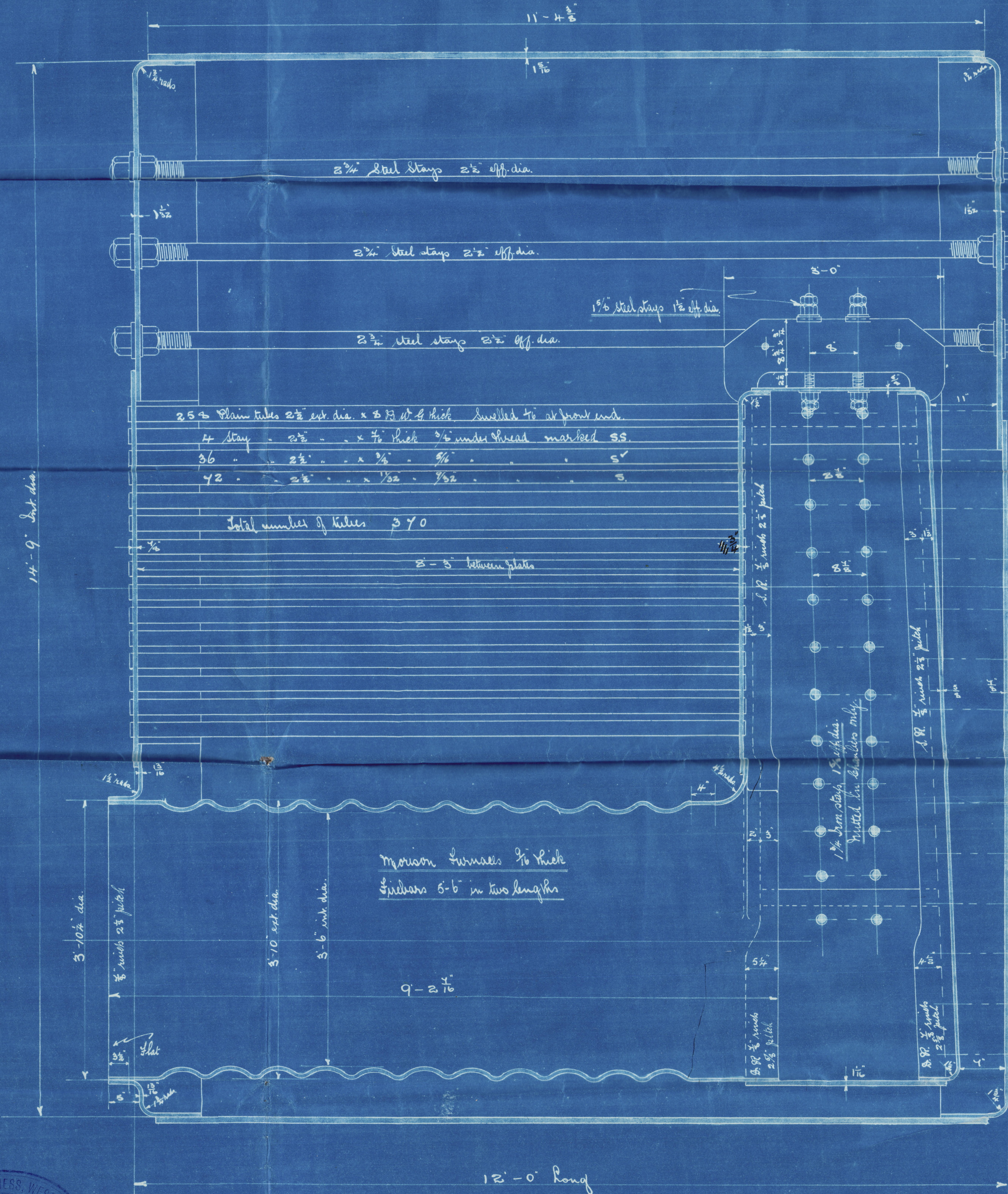


Working Surface	ft
Shells	199.4
Furnaces	142.2
Comb. Chambers	208.6
Lube plate (front)	25.6
Total	2545.6
3 Manholes Total	4120.6

Thickness of plates	
Shell	1 1/2"
Butt Straps	1 1/2"
Top & ends	1 1/2"
Middle of front	1 1/2"
Bottom of front	1 1/2"
Back lube plate	3/4"
Furnaces	1 1/2"
Comb. Cham. Top	1 1/2"
Bottom	1 1/2"



Scale 1" = 14"
3 ft for each number



2 1/2" steel straps, 2 1/2" off dia.
Rivet Straps to rivets 5 dia.

Straps in Combustion Chamber Rivets

1 1/2" steel straps, 1 1/2" off dia. Rivets at both ends

1 1/2" Iron - 1 1/2" - Rivets in chambers only

30 Days requirements for a working pressure of 190 lbs per sq inch
Tensile strength of shell plates, butt straps & longitudinal straps
to be not less than 2 of those per sq inch

25/4/98
MIDDLERSBROUGH

STEEL BOILERS No 141 & 142

Boilers fitted for Armstrong's forced draught

29/4/98
20.7.98

20.7.98
20.7.98
20.7.98

Steel Main Boilers.

Furness Withy & Coy's 243 & 44

Furness, Westgarth & Coy's
Boilers N^o 141 & 2.

Working press: = 190 lbs

S^{rs} Manchester Corporation" = N^o 243

⁶ HPL 11003 ~~that report no 2653~~ ⁶

S^{rs} Manchester Commerce" = N^o 244

HPL 11052 ~~that report no 2693~~

HPL 386-6246



© 2020

Lloyd's Register
Foundation