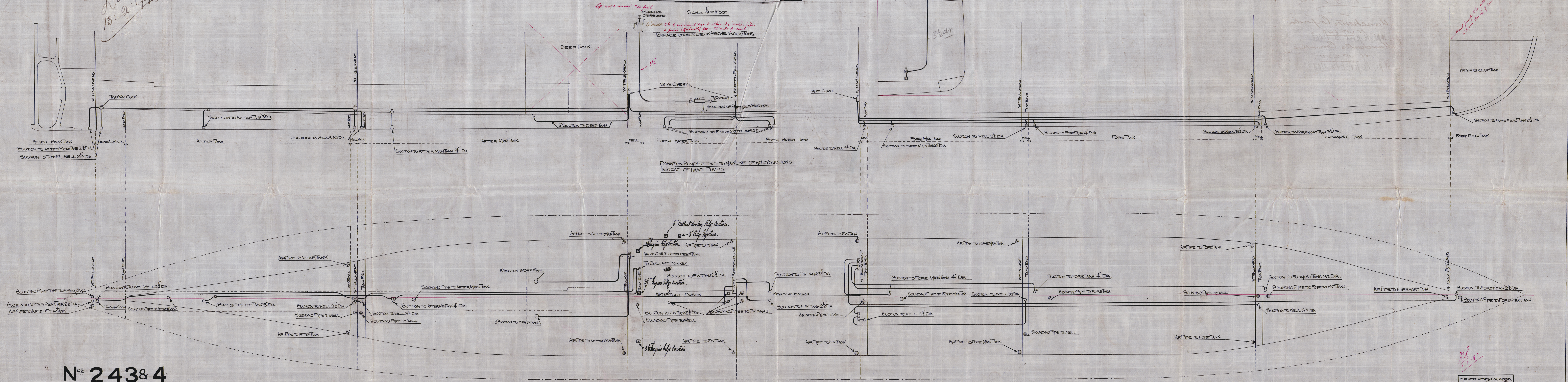


# PUMPING ARRANGEMENT.

SCALE 1/8" = 1 FOOT.



NOS 243 & 4

FURNISH WITH COL LIMITED  
SUPERVISORY ENGINEER  
WEST HARTLEPOOL



Furness Witly  
& Co Ld 243-4  
Pumping Plan.

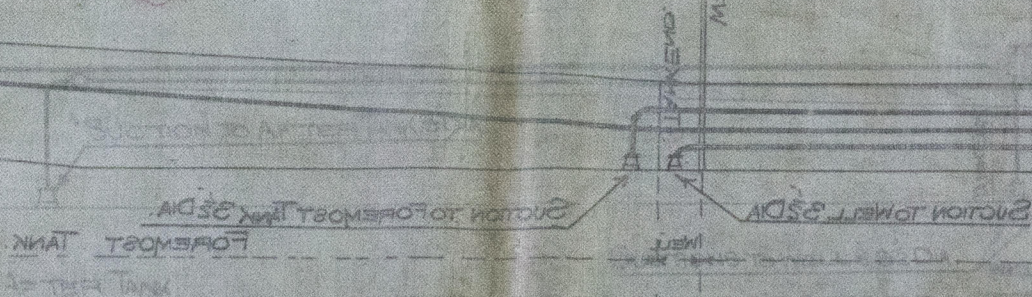
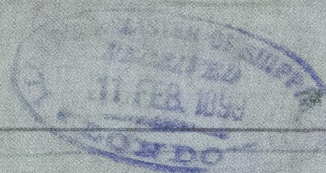
Manchester Corporation

Pl. Report No. 11003

Manchester Commerce

Pl. Report No. 11052

HP 1386-0244



© 2020

Lloyd's Register  
Foundation