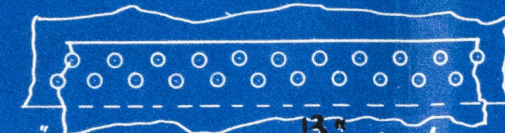


# STEEL DON KEY BOILER.

SCALE 1 INCH = 1 FOOT.

WORKING PRESSURE 100 L.B.S.

Vertical butts of Shell - double riveted.



$\frac{7}{8}$ " steel rivets  $2\frac{13}{16}$ " pitch.

Horizontal seams of shell  
4 vertical " " furnace - single riveted.



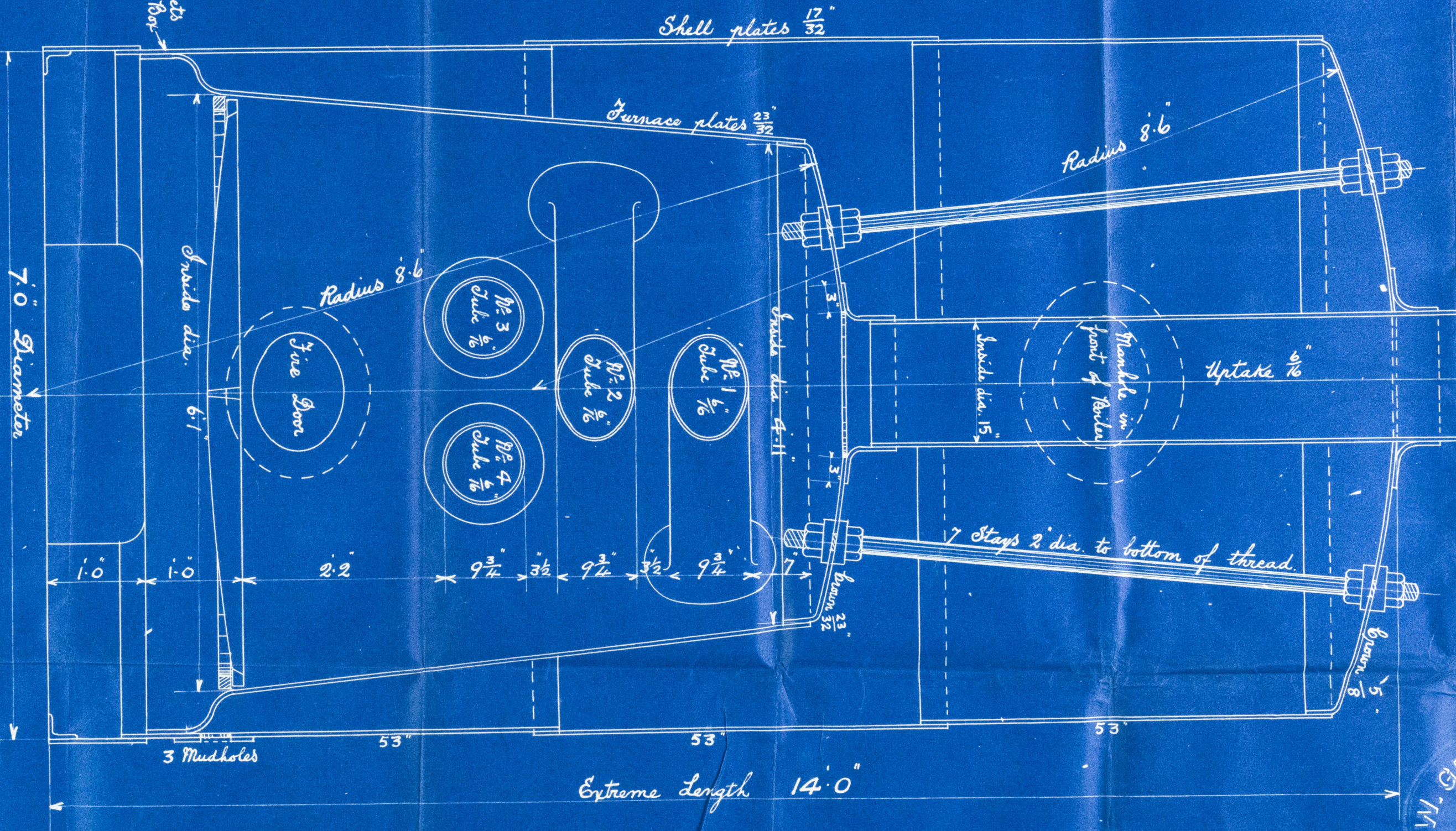
$\frac{13}{16}$ " steel rivets  $2\frac{1}{8}$ " pitch

HORIZONTAL SECTION SHOWING UPTAKE,  
STAYS & TUBES.



Note:- Handholes to be cut in Shell of Boiler opposite each end of Tubes.

Double row of rivets  
round bottom of fire Box


$$\text{Plates at Joint} = \frac{2.825 - .875}{2.825} \times 100 = 68.88\%$$
$$\text{Rivets " " } = \frac{2 \times .6013}{2.8125 \times .53125} \times 85 = 68.40 "$$
$$\frac{17}{32} \text{ steel shell} = \frac{2.825 \times .53125}{19.5 \times 6.5 \times 68.40} = 103.29 \text{ LBS}$$
$$\frac{23}{32} \text{ furnace} = \frac{50 \times (300 \times 7187 - 70)}{71} = 102.55$$

MS  
18/10/98

576 20FF





576 D. Bölen

Donkey Boils

Grav.  $5\frac{4}{6}$  vessel

100 lbs

s.s. "Kaithwaite"  
w. H. pool. Report  
No. 10802.

HPL384-0064



© 2021

Lloyd's Register  
Foundation