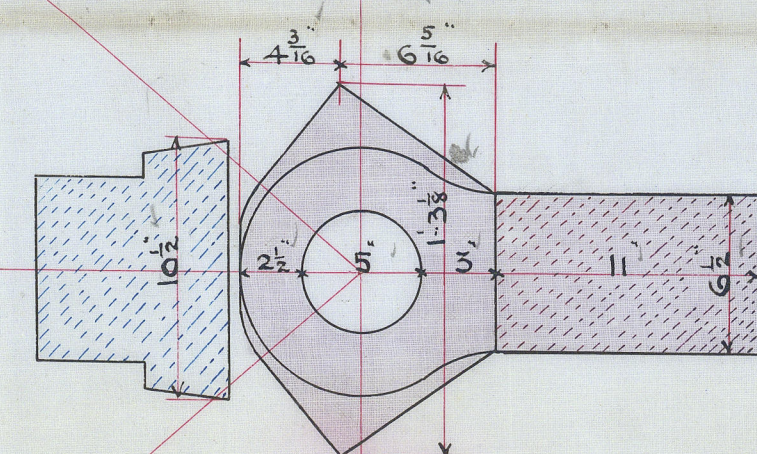
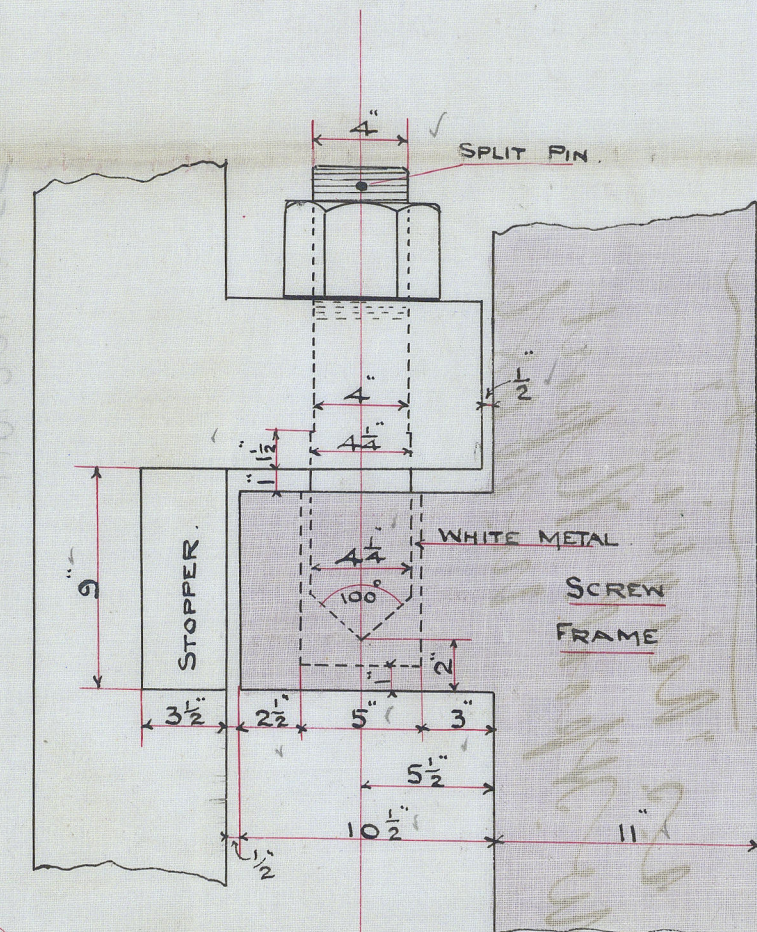
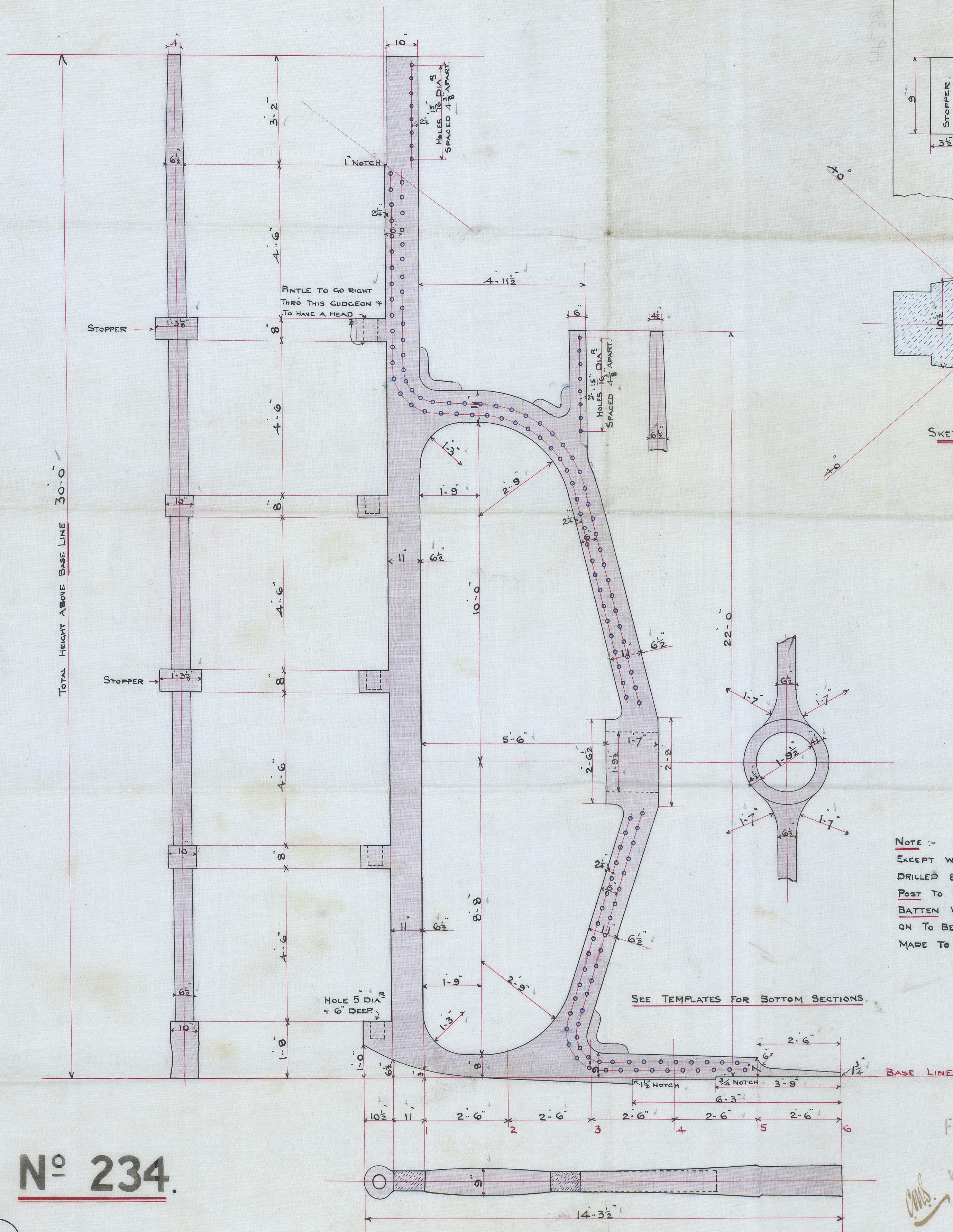


CAST STEEL SCREW FRAME.

4.12.96

SCALE $\frac{1}{2}'' = 1$ FOOT.

TO PASS LLOYD'S SURVEY



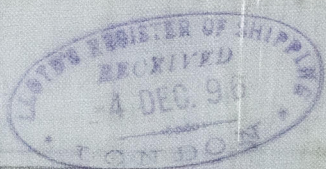
SKETCH OF GUDGEON & STOPPER.

SCALE $\frac{1}{2}'' = 1$ FOOT.

NOTE :- RIVET HOLES $1 \frac{3}{16}$ " DIA. SPACED $5 \frac{5}{8}$ " APART, EXCEPT WHERE OTHERWISE SPECIFIED, & TO BE DRILLED BY MAKERS OF FRAME. POST TO BE PERPENDICULAR TO BASE LINE. BATTEN WITH HEIGHTS OF GUDGEONS MARKED ON TO BE KEPT SO THAT RUDDER CAN BE MADE TO FIT EXACTLY.

N^o 234.

FURNESS, WITBY & CO. LIMITED.
SHIPBUILDERS & REPAIRERS,
WEST HARTLEPOOL.
3RD DECEMBER 1896.



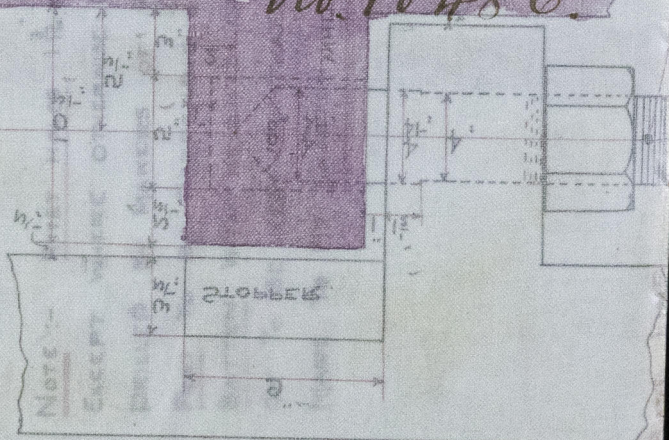
Furness Wroth & Co.

No. 234.

Cast Steel Turn frame.

s.s. "Argyria".

*W. H. Pool. Report
No. 10486.*



HPL381-0055



© 2020

Lloyd's Register
Foundation