

# SCOTIA ENGINE WORKS

## BOILER

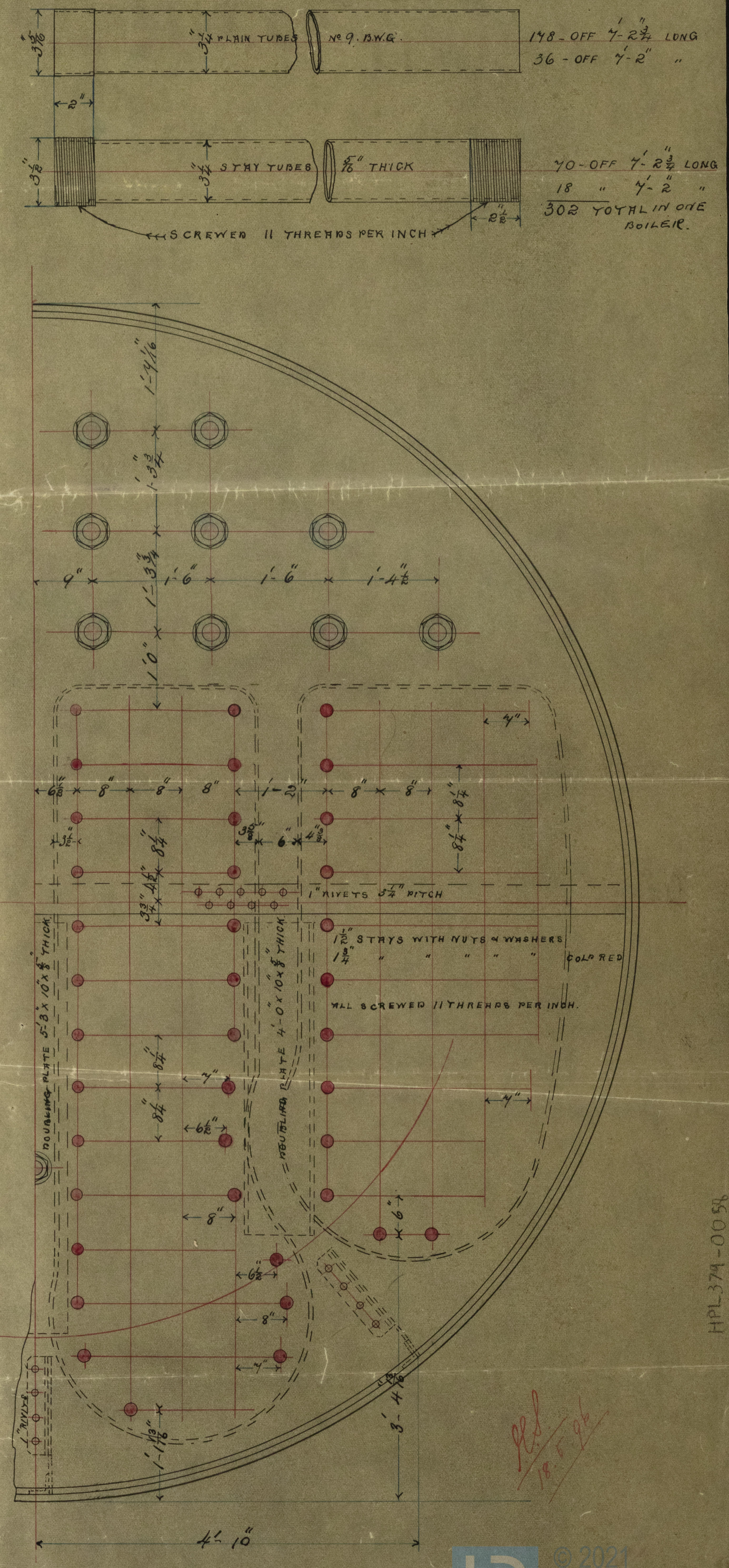
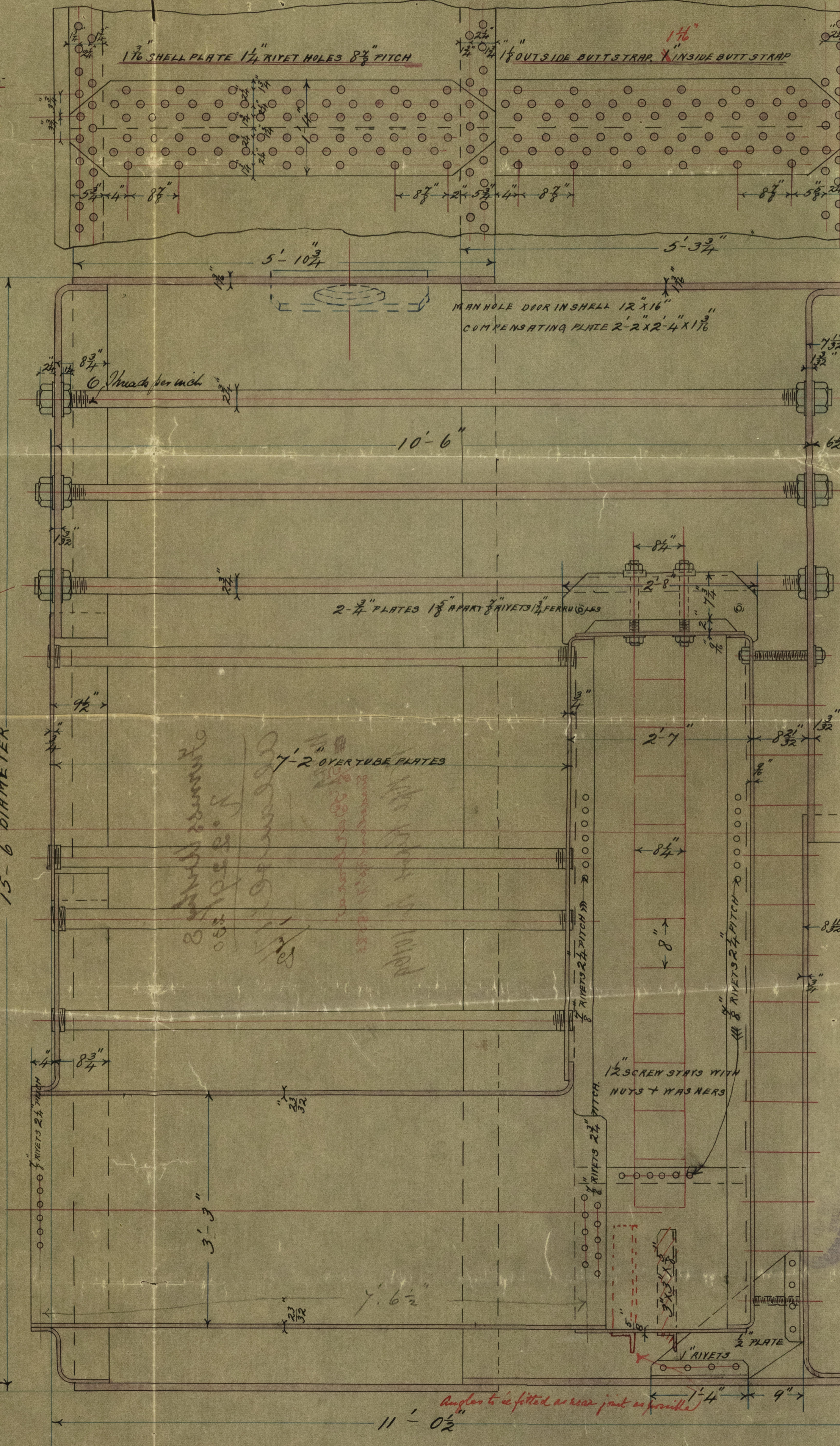
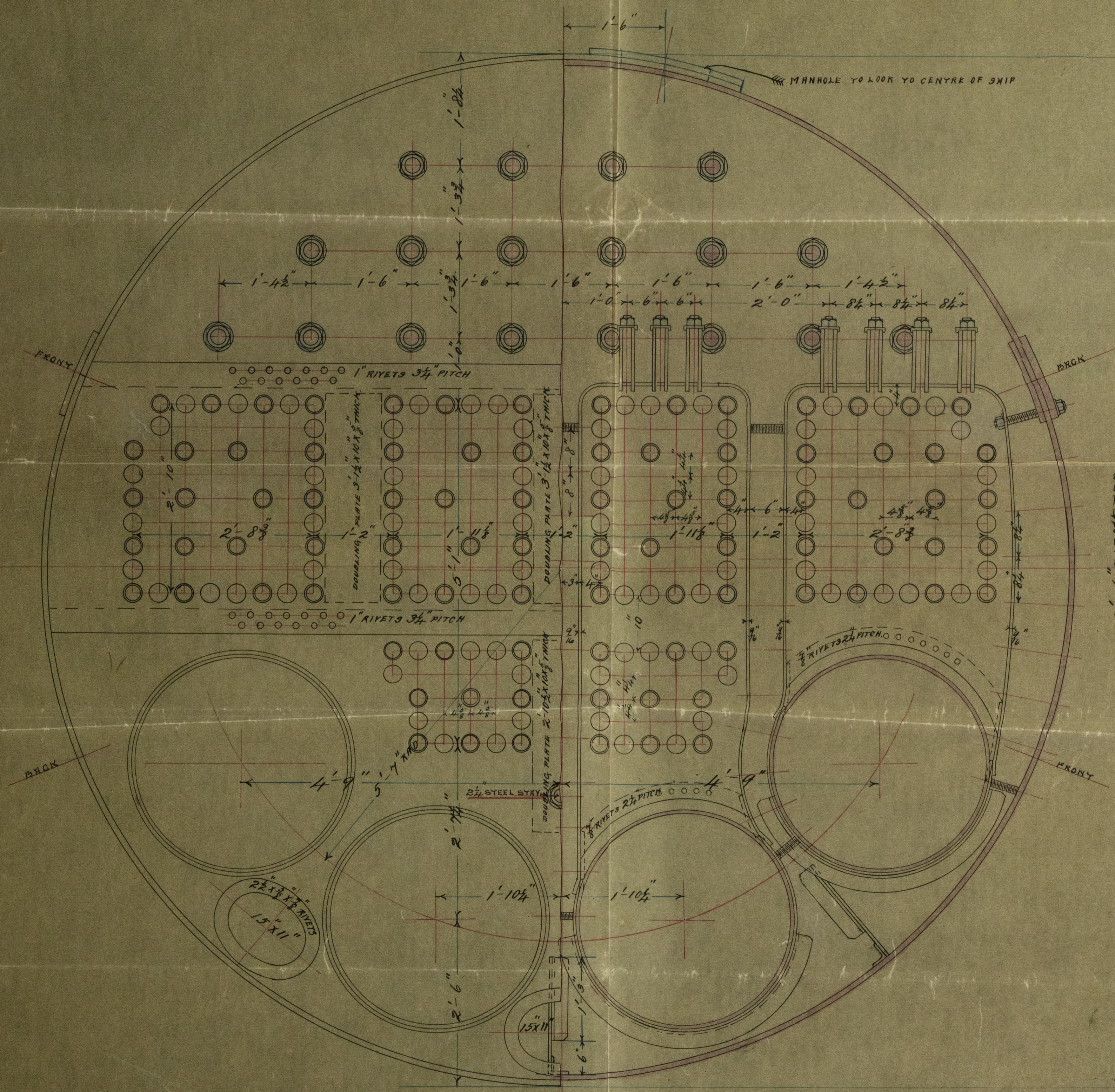
WORKING PRESSURE 160 LBS

ALL PLATES RIVETS & STAYS OF STEEL  
ALL TUBES OF WROUGHT IRON  
ALL RIVET HOLES DRILLED IN PLACE

% OF PLATE = 85.9103  
% OF RIVETS = 86.24

Rev  
19.5.96

L.H.L.  
13.5.96



CONTRACT No 171  
No OFF 2



allan 10/17/2

車  $5\frac{1}{2}$  "Barbara"

Sunderland Rp<sup>l</sup>-N<sup>o</sup> 15585

W. H. R. Report No. 10769

4P(379-0058

2-7 " STALES 18 " ABOUT 8 MINETS 17 FEBRUARY

COMPENSATING PLATE 5-5 X 5-4 X 1/16"  
WASH HOLE DROB HOLE 1/8" X 1/16"

NET WT 1 1/4 LBS 2 3/4 LBS

[illegible]

五

IN STATE WAREHOUSE  
NO. 1

二  
一  
〇  
九  
八  
七  
六  
五  
四  
三  
二  
一

© 2021

Lloyd's Register  
Foundation

1 MAY 95  
BROOKLYN