

TELEGRAPHIC ADDRESSES.

"BEARDMORE, GLASGOW."

"BEARDMORE, LONDON."

LONDON OFFICE.

11, QUEEN VICTORIA ST. E.C.

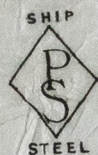
TELEPHONE N° 1356.

Parkhead Forge Rolling Mills.
and Steel Works,
Glasgow, 16th August 1893.

Messrs Wm Allan & Co Ltd

Bought of William Beardmore & Co.

Manufacturers of Steel Plates, Bars & Rivets (Siemens Process) for Ships, Boilers, &c.



Marine Engine Forgings of all descriptions: Iron Rivets for
Ships, Boilers, &c. Steel Plates flanged for Boiler Fronts, &c.



Flanged Plates

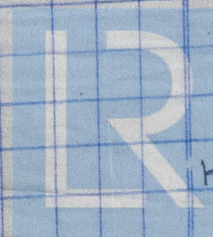
C163	2	585	7	9 3/4	50	3/4	1	16	2	16
	1	709	7	8 1/2	91 1/2	.	1	8	3	8
	1	895	7	9 1/2	98 3/8	1 3/32	1	16	1	12
	2	824	7	8 3/8	67 1/8	.	2	9	2	.
	6						7	11	1	8

No Trucks 2317 6398-4
South Dock Sta Sunderland

2 Plates = 1 16 2 16 3/6
11 1 5 14 2 20 3/32

John Allan
Surveyor to Lloyd's Register.

21/8/95



© 2020

HPL377-0222

Lloyd's Register
Foundation