

TELEGRAPHIC ADDRESSES.

"BEARDMORE, GLASGOW."

"BEARDMORE, LONDON."

LONDON OFFICE.

11, QUEEN VICTORIA ST. E.C.

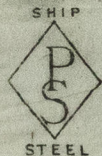
TELEPHONE N° 1356.

Parkhead Forge Rolling Mills.  
and Steel Works,  
Glasgow, 23<sup>rd</sup> Aug<sup>r</sup> 1895.

Messrs Wm. Allan & Co. 2<sup>d</sup>.

Bought of William Beardmore & Co.

Manufacturers of Steel Plates, Bars & Rivets (Siemens Process) for Ships, Boilers, &c.



Marine Engine Forgings of all descriptions. Iron Rivets for  
Ships, Boilers, &c. Steel Plates flanged for Boiler Fronts, &c.  
Flanged Plates.

BOILER



C163	1	PSS 898..	7. 7 <sup>1</sup> / <sub>4</sub>	92 <sup>1</sup> / <sub>8</sub>	1 <sup>1</sup> / <sub>2</sub>	116	116
	1	220	7. 8 <sup>1</sup> / <sub>4</sub>	97 <sup>1</sup> / <sub>4</sub>	3 <sup>1</sup> / <sub>4</sub>	19	
	2	873 <sup>1</sup> / <sub>4</sub>	7. 8 <sup>3</sup> / <sub>4</sub>	79 <sup>1</sup> / <sub>2</sub>		253	16
	<u>4</u>					<u>511</u>	<u>14</u>
			3 <sup>3</sup> / <sub>4</sub>				

John Allan

Surveyor to Lloyd's Register.

26/8/95

20 Sunderland, South-Jersey

HPL377-0221

