

Furness. Middy 188

Nº 222 vessel.

*Donkey Boiler
3/8 "Thru-screw"*

SUNDERLAND. Nº 18263
WEST HARTLEPOOL. Nº 9962.

HPL377-0213

9x10 + 52 3/2 5



© 2020

Lloyd's Register
Foundation



VERT^L STEEL BOILER

14'0" x 7'0"

SCALE 1 INCH TO A FOOT

WORKING PRESSURE = 80 LBS "H"

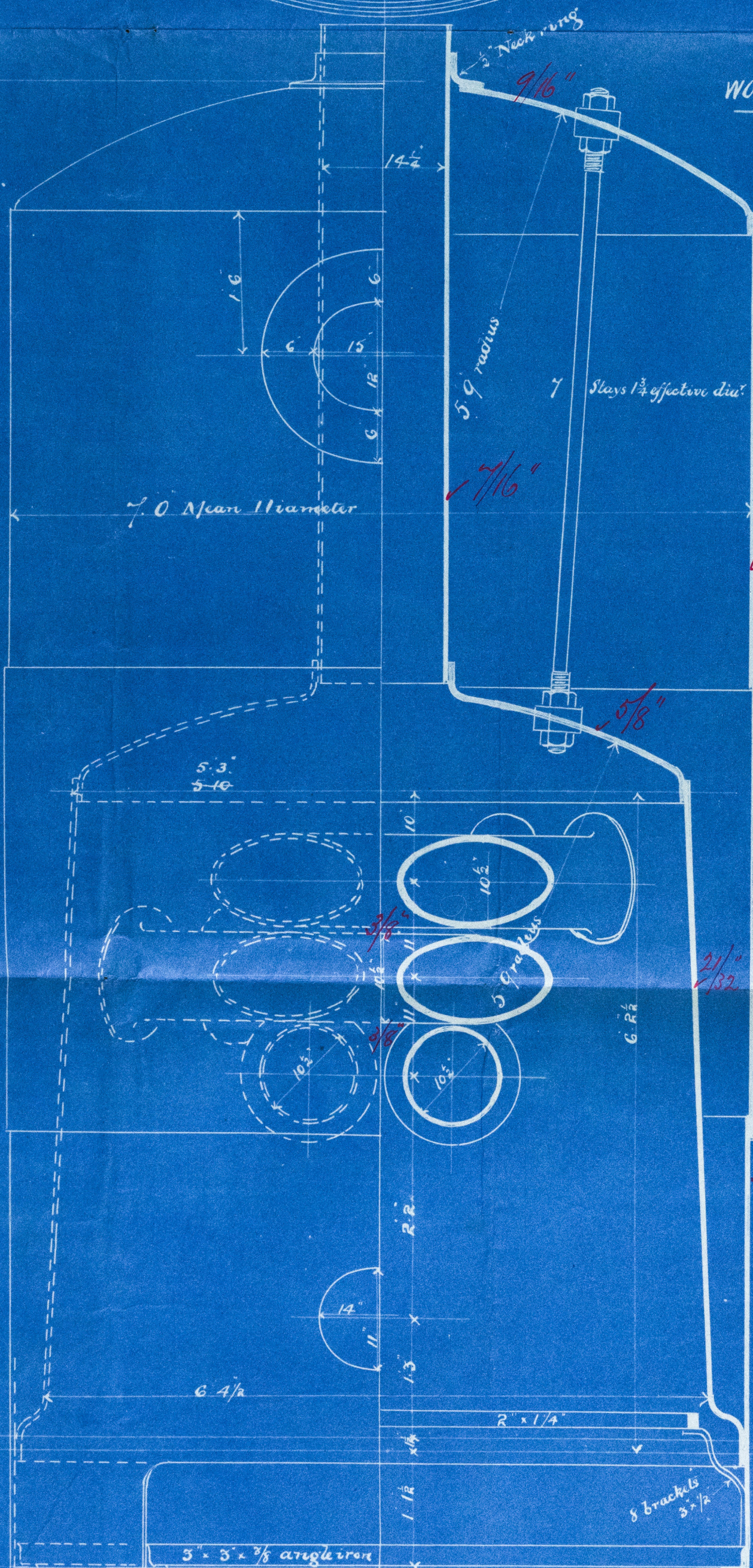
Furness, Withy & Co. Ltd.

N^o. 2228/s.

Order N^o. 922.

To Pass Lloyds Survey

Length 14'0"



1 Hand hole at each end of each tube



4 Mudholes round base.

Double riveted

8 brackets
3" x 3" x 3/8"

Circular Seams Single riveted 13/16 Rivets R Pitch
Vertical double 13/16 " R 3/4 "

29/8/92

THE SUDRON & CO. LTD.
IMPERIAL BOILER WORKS
STOCKTON-ON-TEES.

HPL 377-0213