

See
R.N. 9:4:94.
LONDON

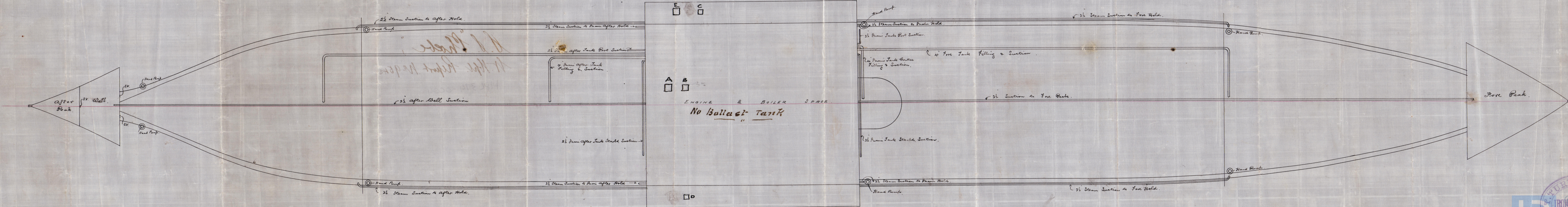
2nd 1st 2nd 3rd
2nd 1st 2nd 3rd
2nd 1st 2nd 3rd



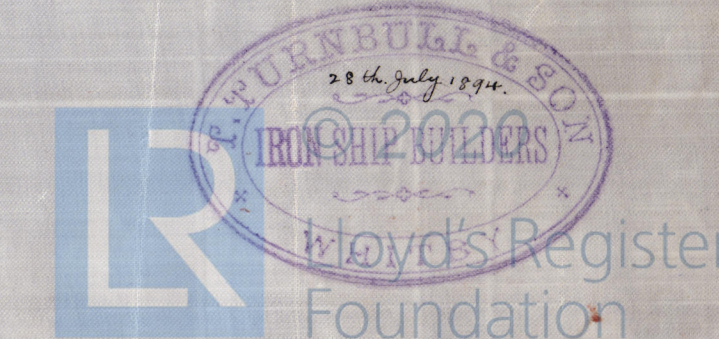
Proposed
Pumping Arrangement.

— No. 126 sp. —
— Scale $\frac{1}{8}$ = one foot. —

Under air to image about 2130 tons.



- A. 3 1/2 Ballast Tank direct
- B. 3 1/2 Main Engines
- C. 3 1/2 " " + Fed by Port wing
- D. " " " Start
- E. 6 1/2 " injection, 6" dia



HPL374-0004

T. Turnbull & Son
No. 126.

Pumping plan.



H. S. "Phoebe"

W. Hpl. Report No. 9545

HPL 374-0004



© 2020

Lloyd's Register
Foundation