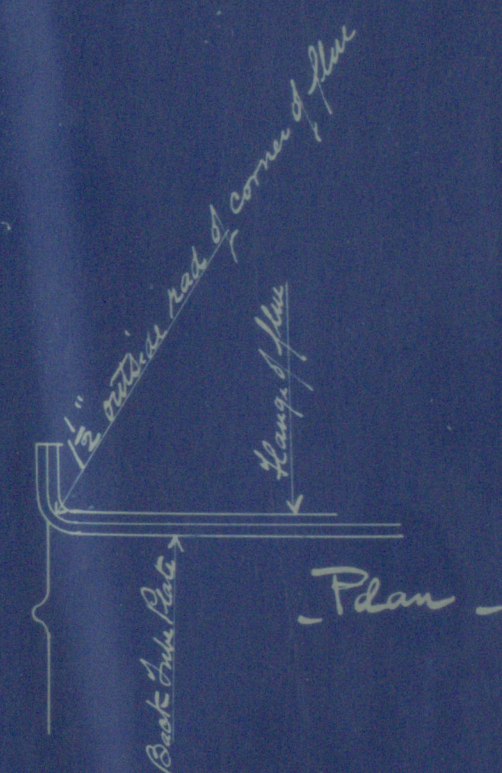


Lloyds Survey Copy



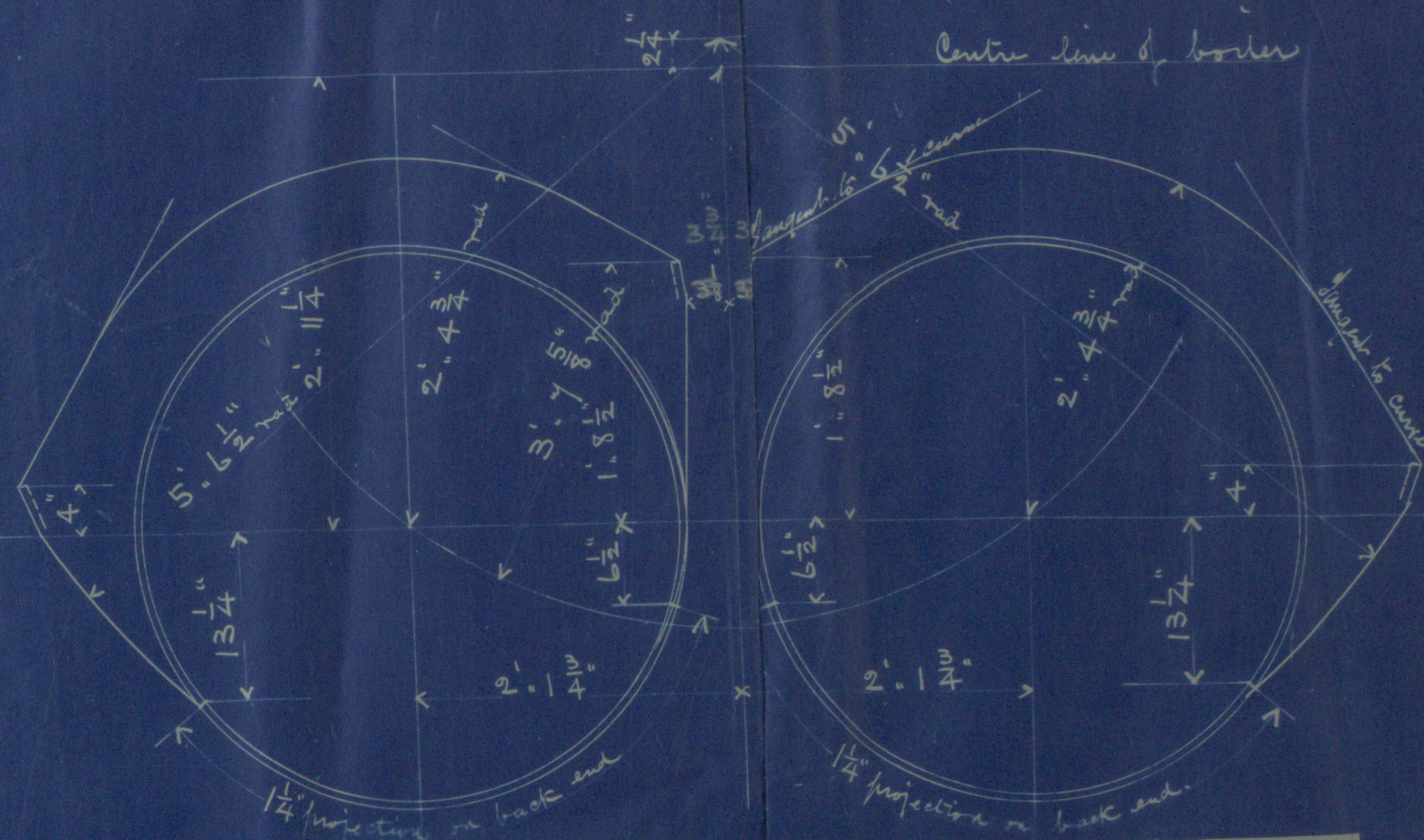
Steel Ribbed Tubes -

Boiler. No 159.

Scale 1 in = 1 foot.

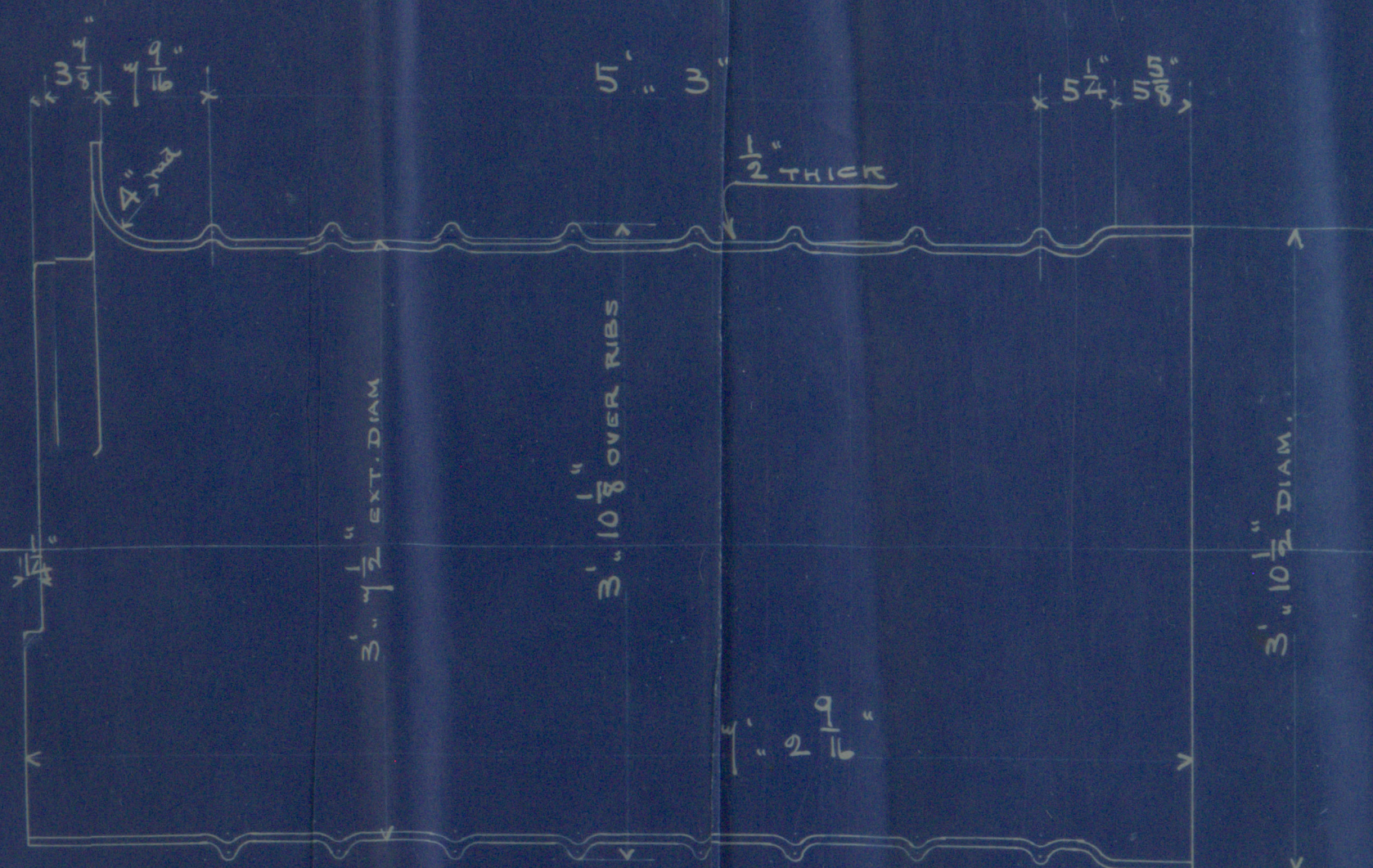
160 to to Lloyd's.

Boiler No 466



2 tubes

2 tubes



Furnaces  $\frac{1160 \times (8-2)}{\pi} = \frac{1160 \times (8-2)}{4.71} = 1601 \text{ lbs}$   
Total No required 4.

