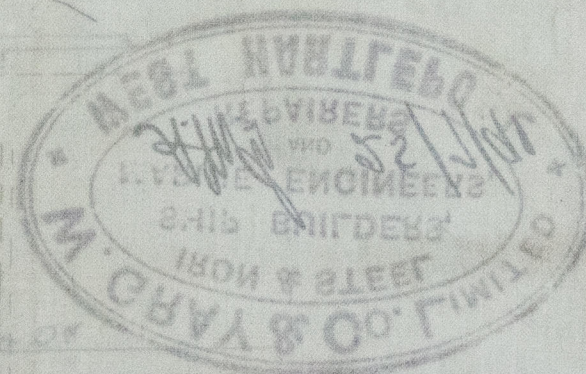
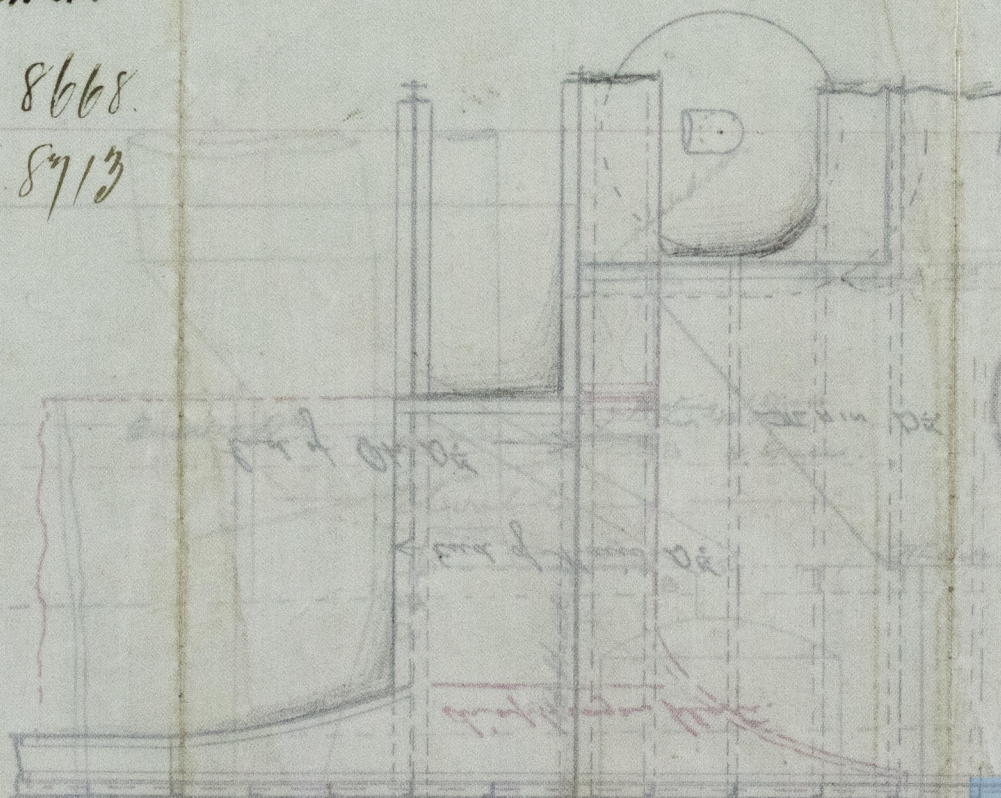


HP-366-0194

HP-366-0164

W. Gray & Co., Ltd.
No. 1431

S. S. Mount Stewart
W. Wpl. Report No 8668.
D. 1st Entry D. 87/13

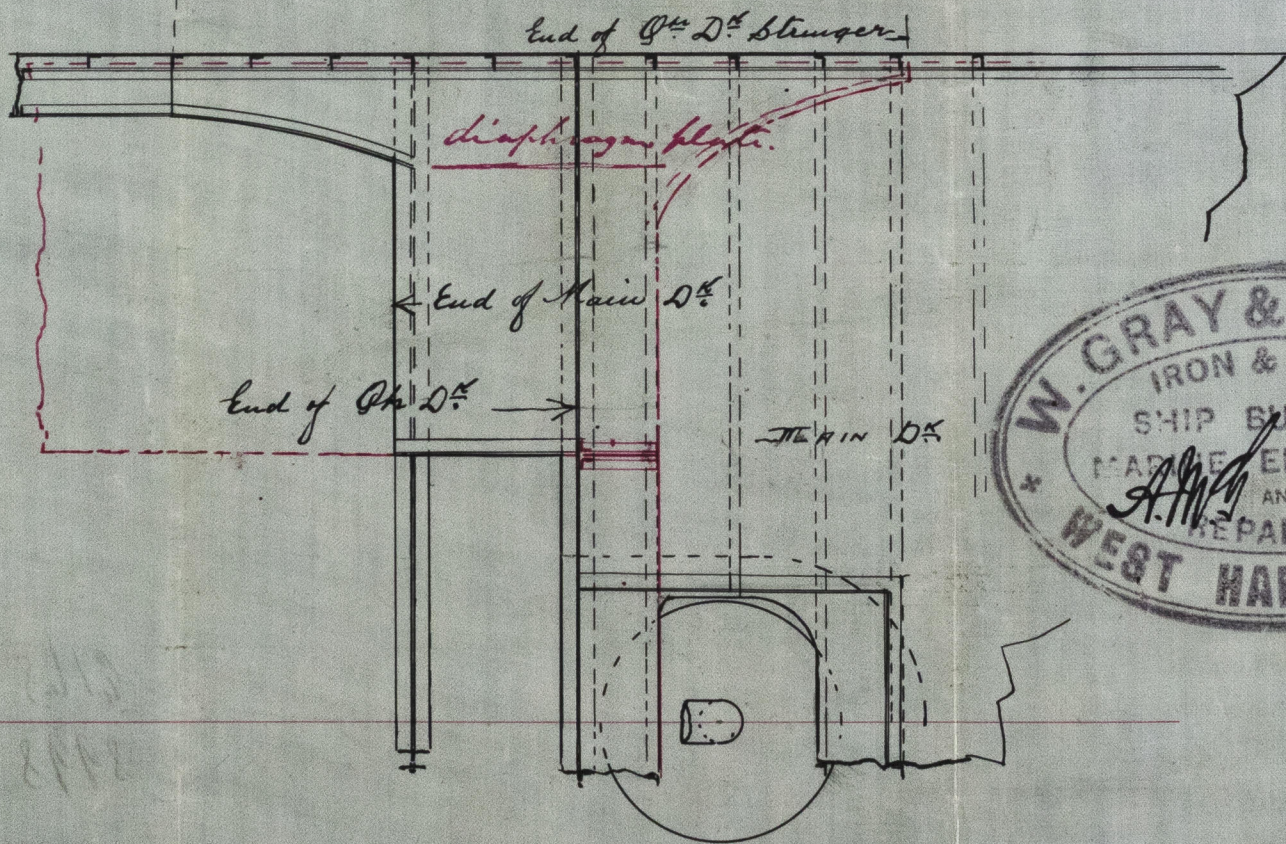
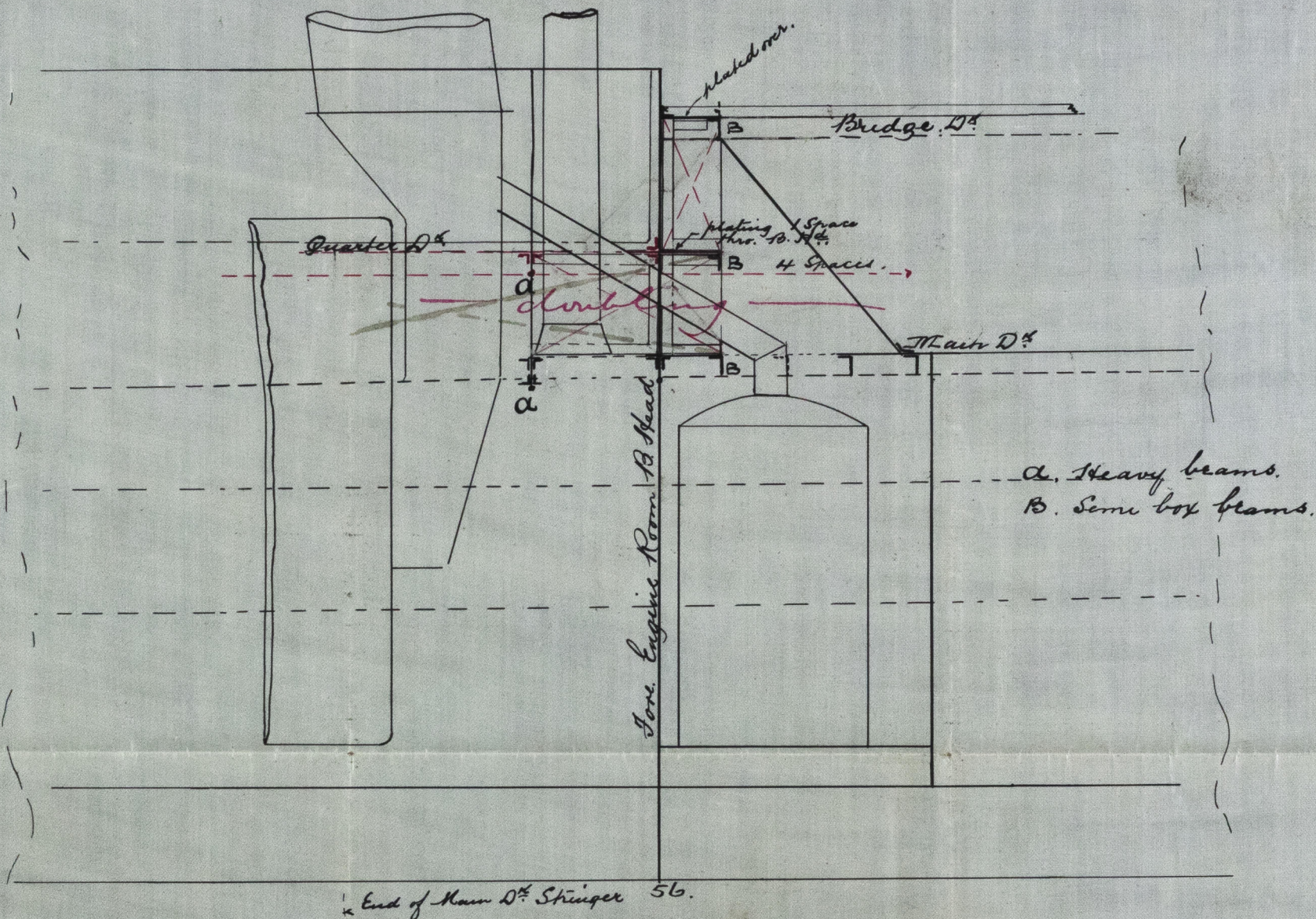


© 2019

Lloyd's Register
Foundation

27-7-91.

Sketch showing Strengthening in
way of Break.
S/S. No. 431.



*W. Gray & Co. Ltd.
25/7/91
W. Gray & Co. Ltd.
25/7/91
W. Gray & Co. Ltd.
25/7/91*

27/7/91



© 2019
Lloyd's Register
Foundation

HPL 366-0194