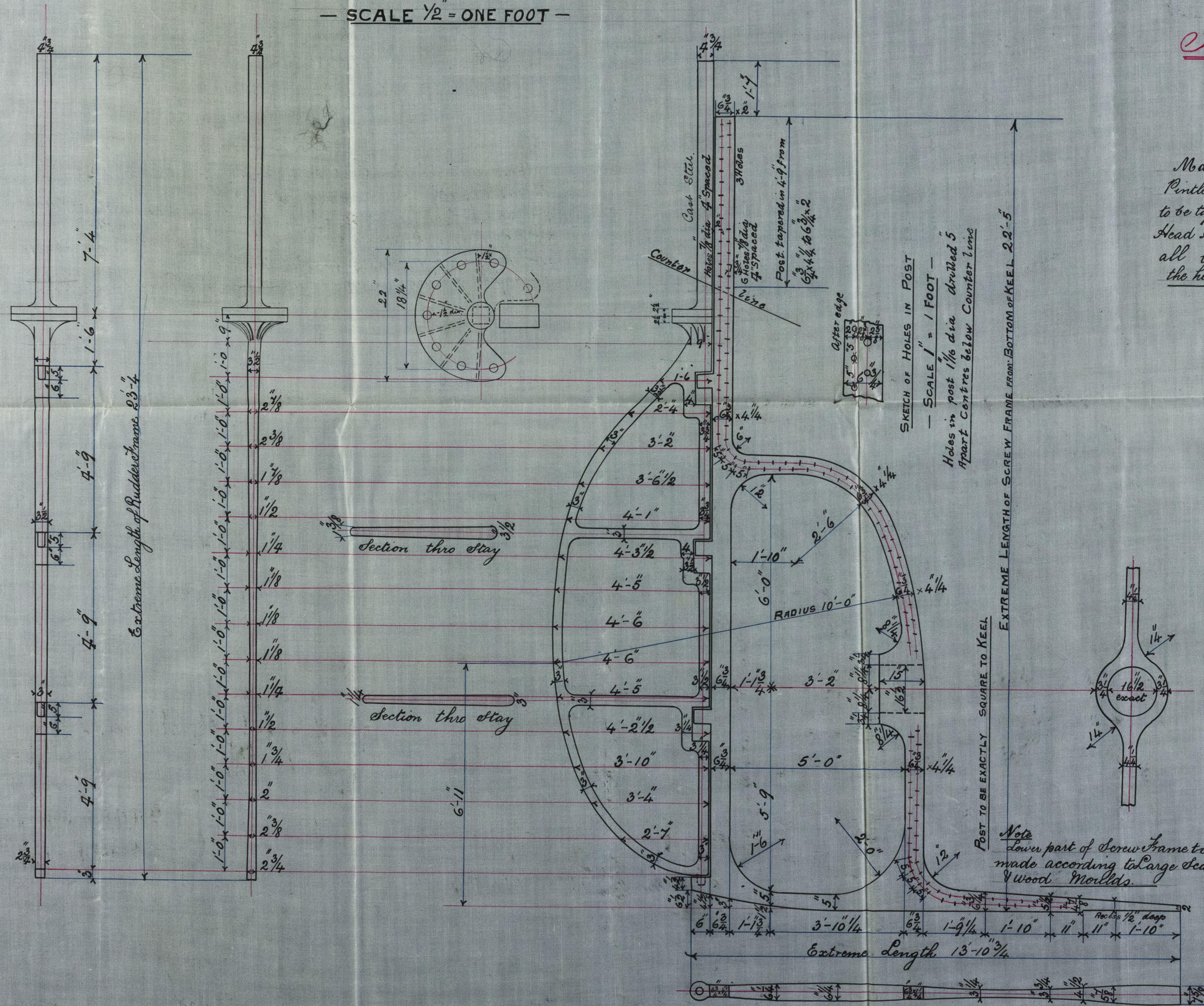


— CAST STEEL—
RUDDER & SCREW FRAME—

FOR **S. S. 431** —

— SCALE $\frac{1}{2}'' = \text{ONE FOOT}$ —



Cast Steel Stern Frame

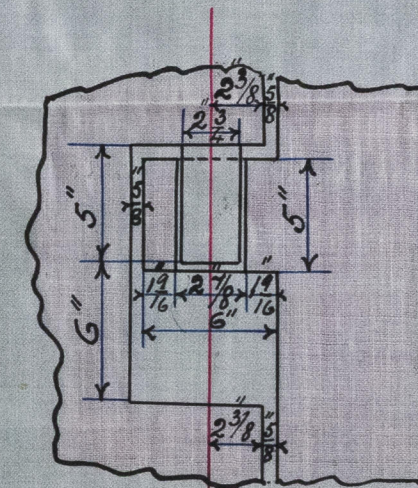
Order 2053

Rudder Frame

Order 2055

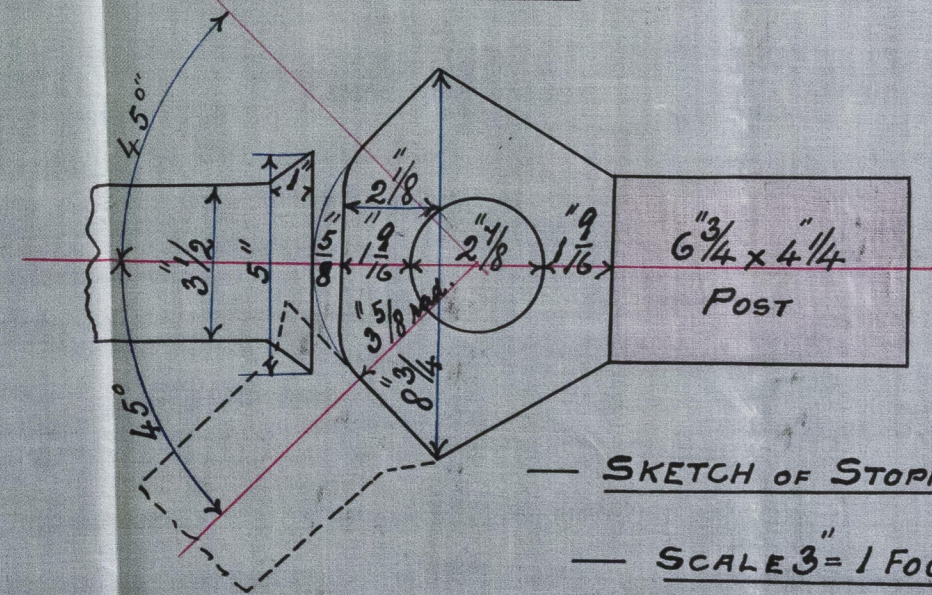
To pass Lloyds Inspection & Tests

Main piece of Rudder to be turned down 3'-0" from head 4 $\frac{3}{4}$ " dia.
Pintles perfectly round centred 2 $\frac{3}{8}$ " from fore side of Frame. Frame
to be tapered from fore side to after side as at section thro' Stays
Head Heel and pintles to be turned in a lathe so as to get them
all truly centred. Check the height of Boxes on Rudder from
the height of Gudgeons on Stern Frame and make them correspond.



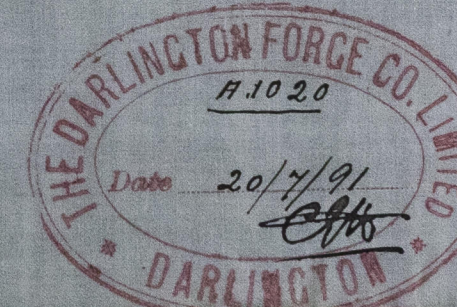
— SKETCH OF BOX & GUDGEON

— SCALE $1\frac{1}{2} = 1$ FOOT. —



— SKETCH OF STOPPER —

— SCALE 3" = 1 FOOT —



HP-366-0193

N. S. "Mount Stewart,"
 W. Hpl. Report No. 8913

CAS —

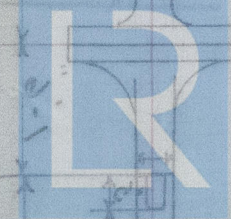
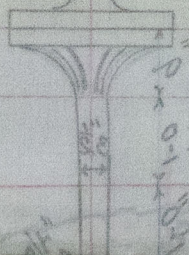
RUDDER &

37 —

2055

Inspection & Tests

to be turned down 5/8 from head & then
 entered 2 1/2 from fore side of frame & then
 to after side as at section this stage
 be turned in a lathe so as to give them
 the height of Boxes on Rudder from
 the end of frame and make them straight



© 2019

Lloyd's Register
 Foundation