

Irvine & Co's No 70

A.P. Chatfield

Sept 8335

HPL 364-0072

Received of the  
LLOYD'S REGISTER  
NOTE: 21/11/1913  
1/11/1913

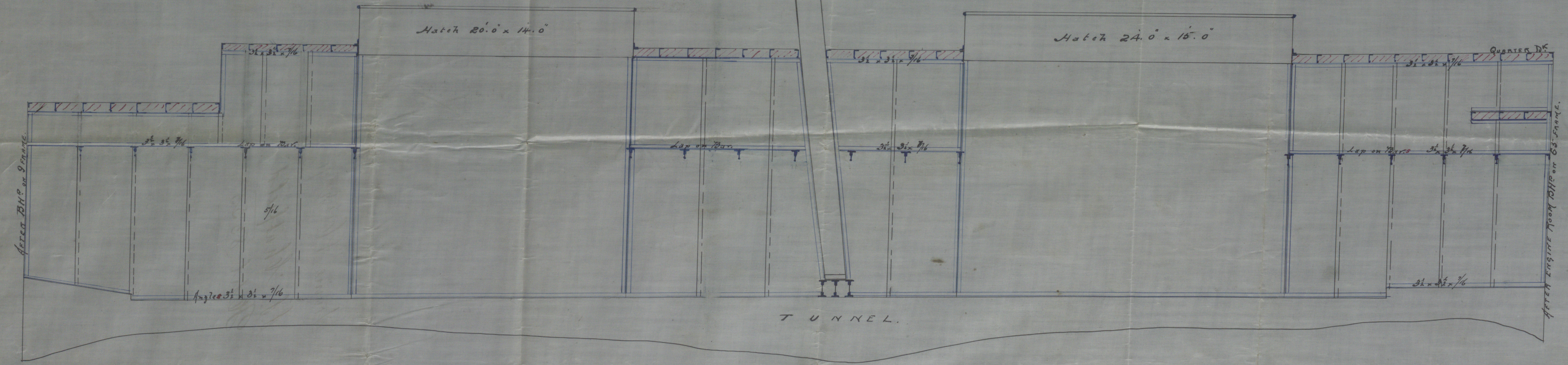
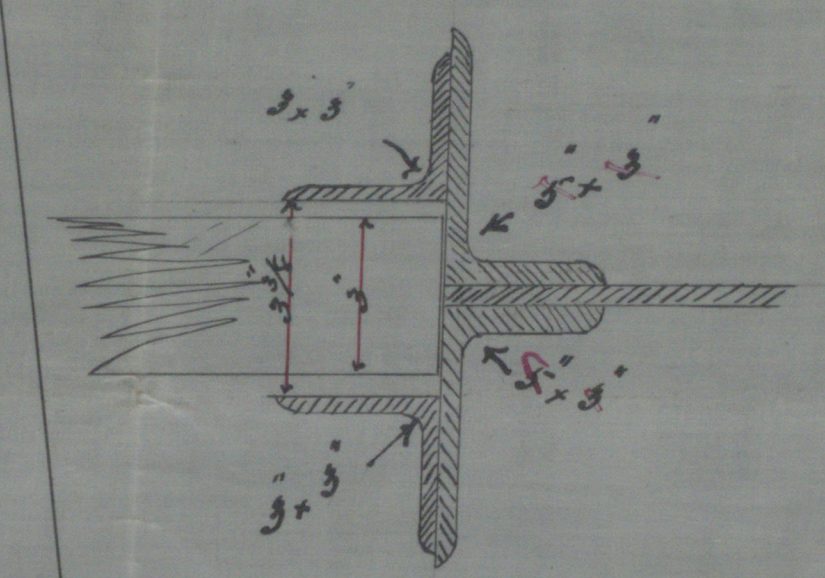




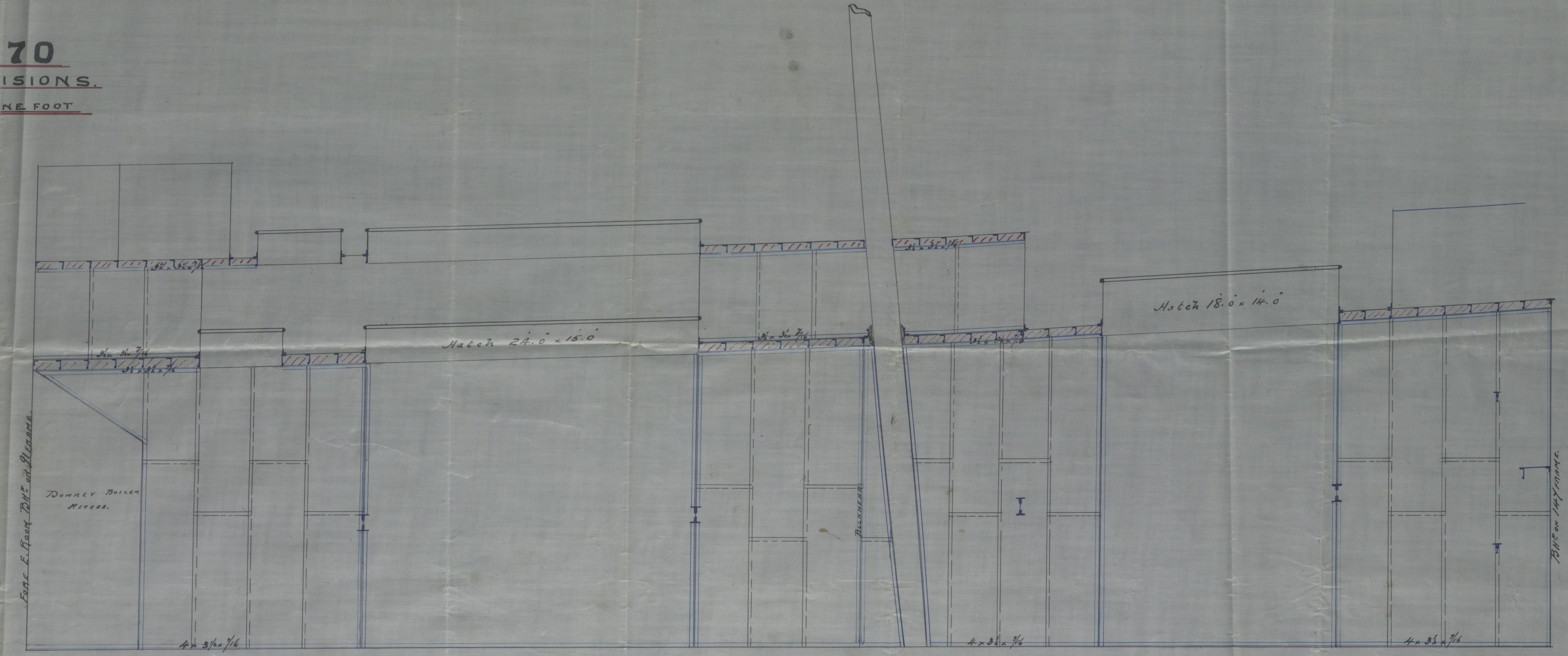


FRI 15 AUG 99

NOTE. STIFFENERS OR SEAMS <sup>over</sup> 6" x 9" of Bulkhead  
PLATING ALL  $\frac{5}{16}$  ON EACH SIDE UNDER (ALTERNATE BEAMS)  
*Bulkheads effectively connected to hull beams*



**S. S. N° 70**  
**IRON GRAIN DIVISIONS.**  
SCALE  $\frac{1}{4}$ " = ONE FOOT



Moat  
12/8/90