

# MIDSHIP SECTION

SCALE  $\frac{1}{2}$  INCH = 1 FOOT

Class 100 A.I. 'Steel'

S.S. ETON. N<sup>o</sup> 380.

## Equipment

2	Bower Anchors each	34	Coul
1	"	29	
1	Stream	10	
1	Kidge	5	
1	"	2	
270	Various stud chain cable	17	
75	Stream	1	
100	hump keel line	12	or 11 steel
90	Warp	9	
"	"	8	

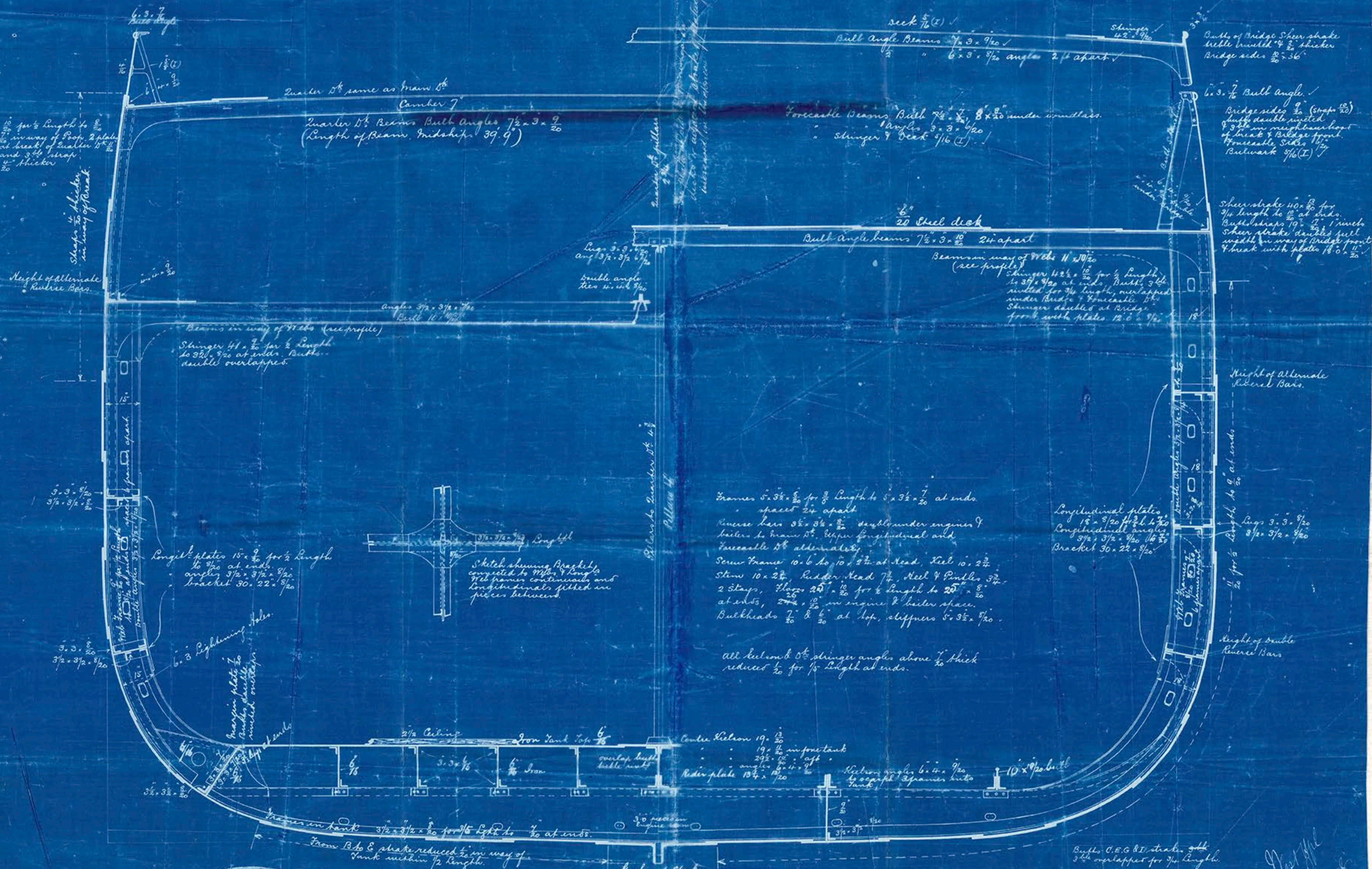
Ex Steel

Dimensions	Builder	Clayds.
Length B.P.	300.0	298.33
Breadth Extreme	41.6	41.28
Depth of Hold	21.0	23.04
" Moulded	23.0	23.04
N <sup>o</sup> for Frames	84.20	20.64
Equipment	27898.03	23.90
Plating	25119.38	39.66
Depth to Length	12.94	34.20
Breadth	7.22	

## Equipment N<sup>o</sup>

Length of sections  $\frac{242.33}{298.33} \times \frac{1}{8} = \frac{1}{4}$   
 $\frac{25119.38}{904} = 2778.66 + 25119.38 = 27898.03$

359-378 & 380



359

359



Copy of Indulgence section.

S. S. "Eton"

W. Hpl Report N<sup>o</sup> 7888

7888



© 2018

Lloyd's Register  
Foundation

HPL 361/176