

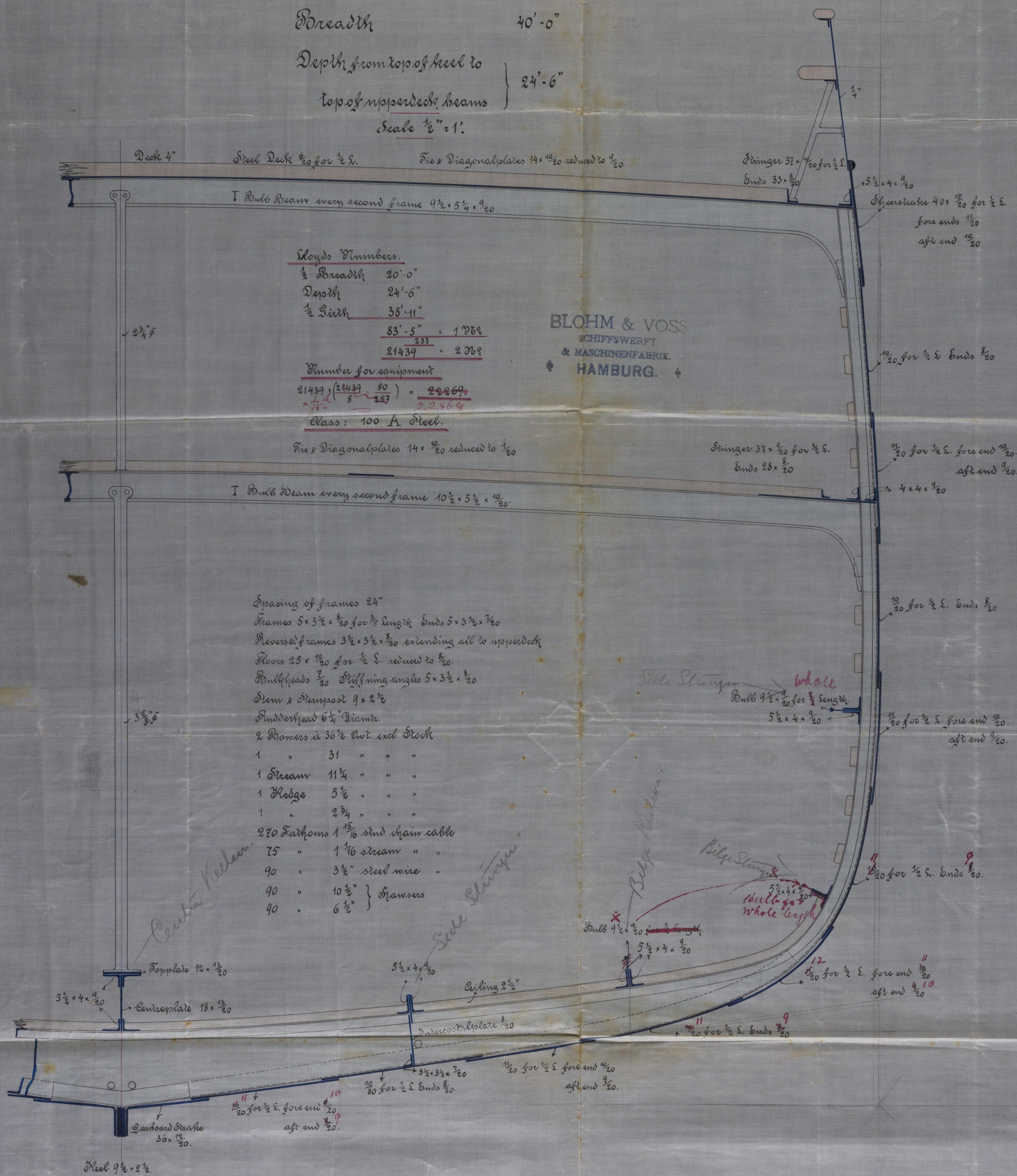
S. No. 66.

Length 254'-0"

Breadth 40'-0"

Depth from top of keel to  
top of upper deck beams } 24'-6"

Scale  $\frac{1}{2}" = 1'$ .



Riveting:

All Landings of outside plating to be double riveted.

The ends of outside plating to be treble  
riveted for  $\frac{1}{2}$  length amidst ships with  
ends  $\frac{3}{8}$  thicker than the plates they  
connect.

The remainder butts to be double riveted  
with straps  $\frac{3}{20}$  thicker than the plates  
they connect

The moppered stringer to be treble riveted for  $\frac{1}{2}$  length amidships with double buttships, the remainder to be double riveted with single straps  $\frac{1}{2}$  to thicker than the plates they connect.



4 OCT. 84

887004 UHT



Report of the

Committee

Report of the  
Committee  
on the  
State of the  
Union



HAM117-0227



© 2019  
Lloyd's Register  
Foundation