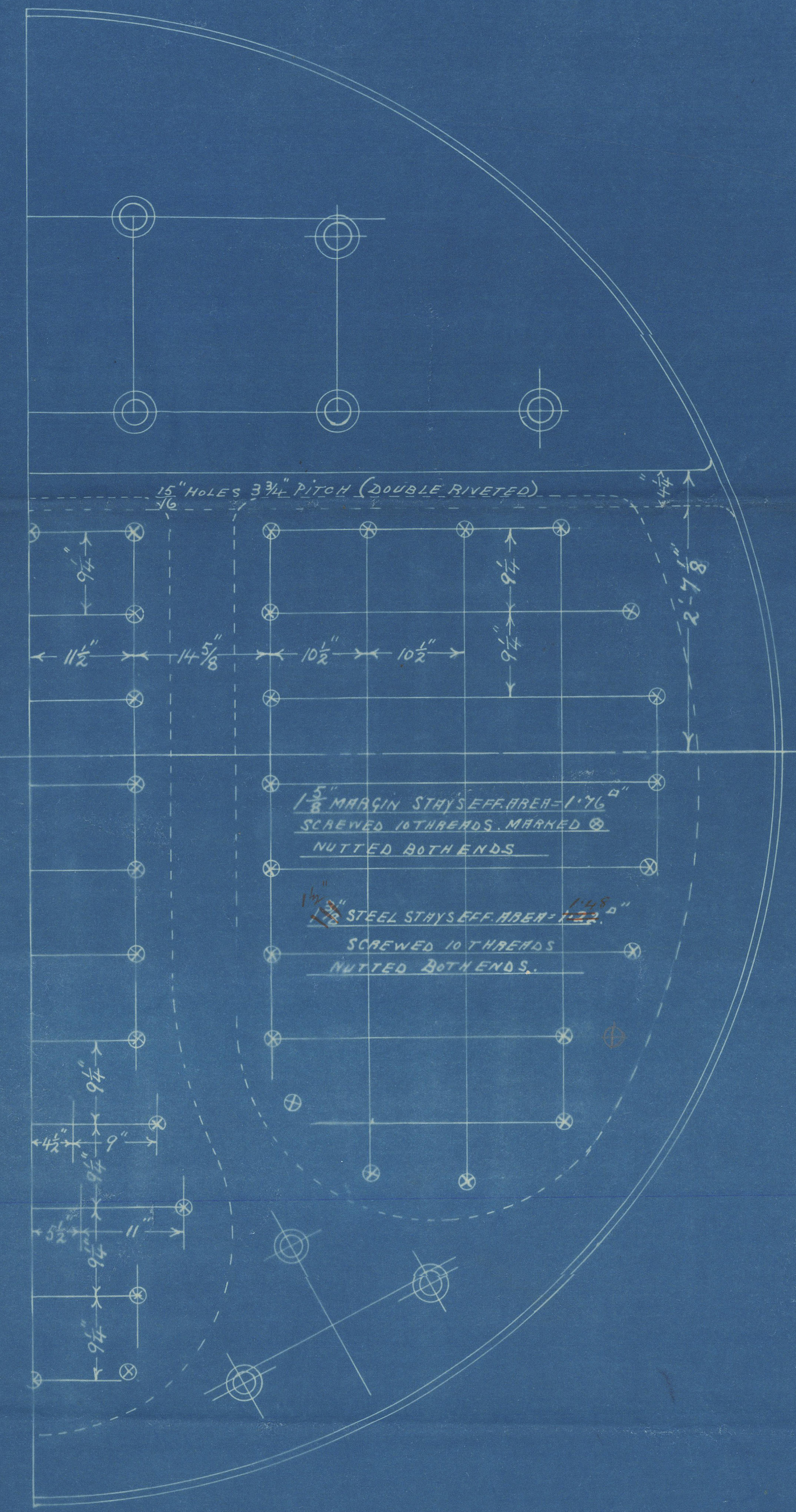
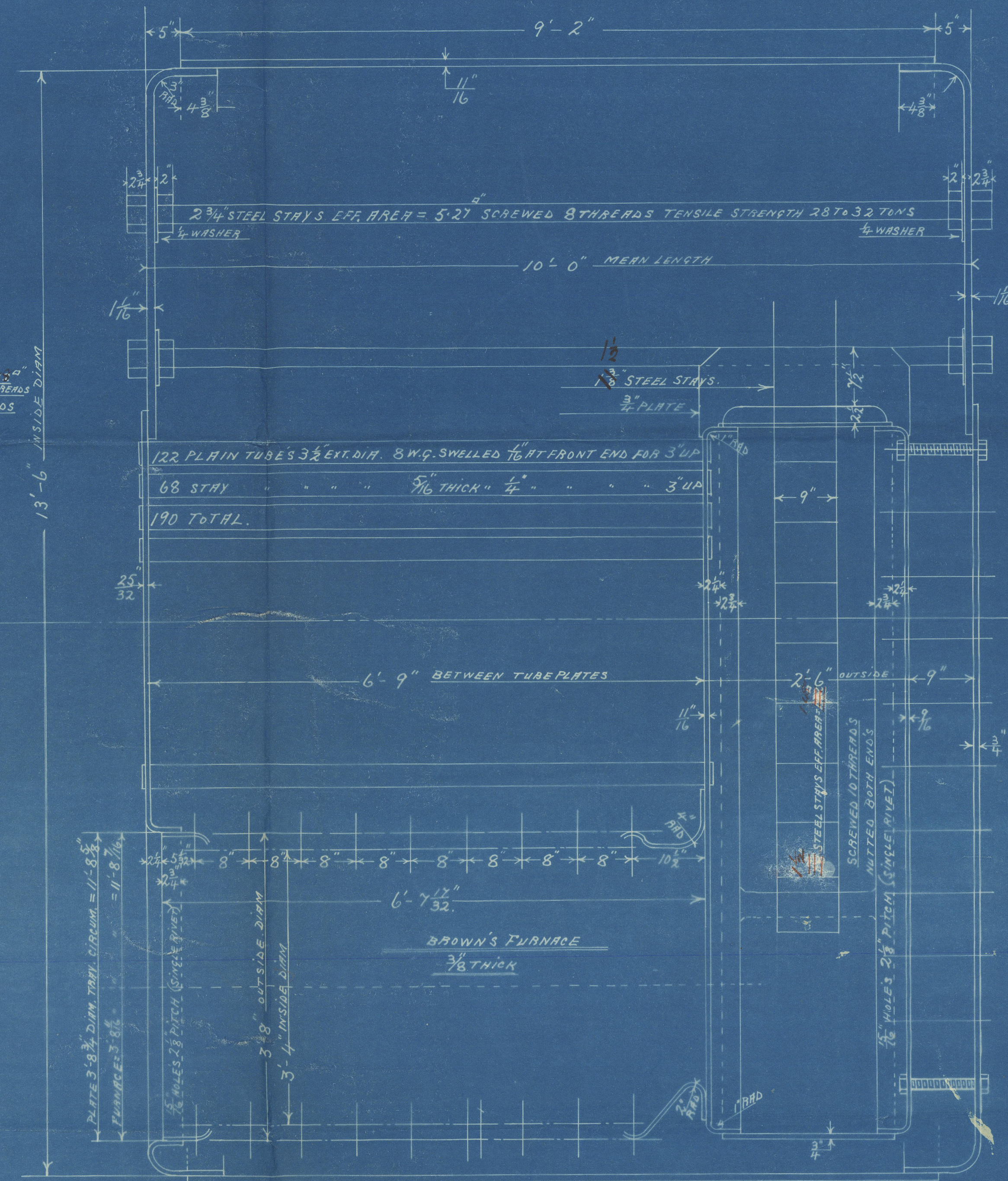
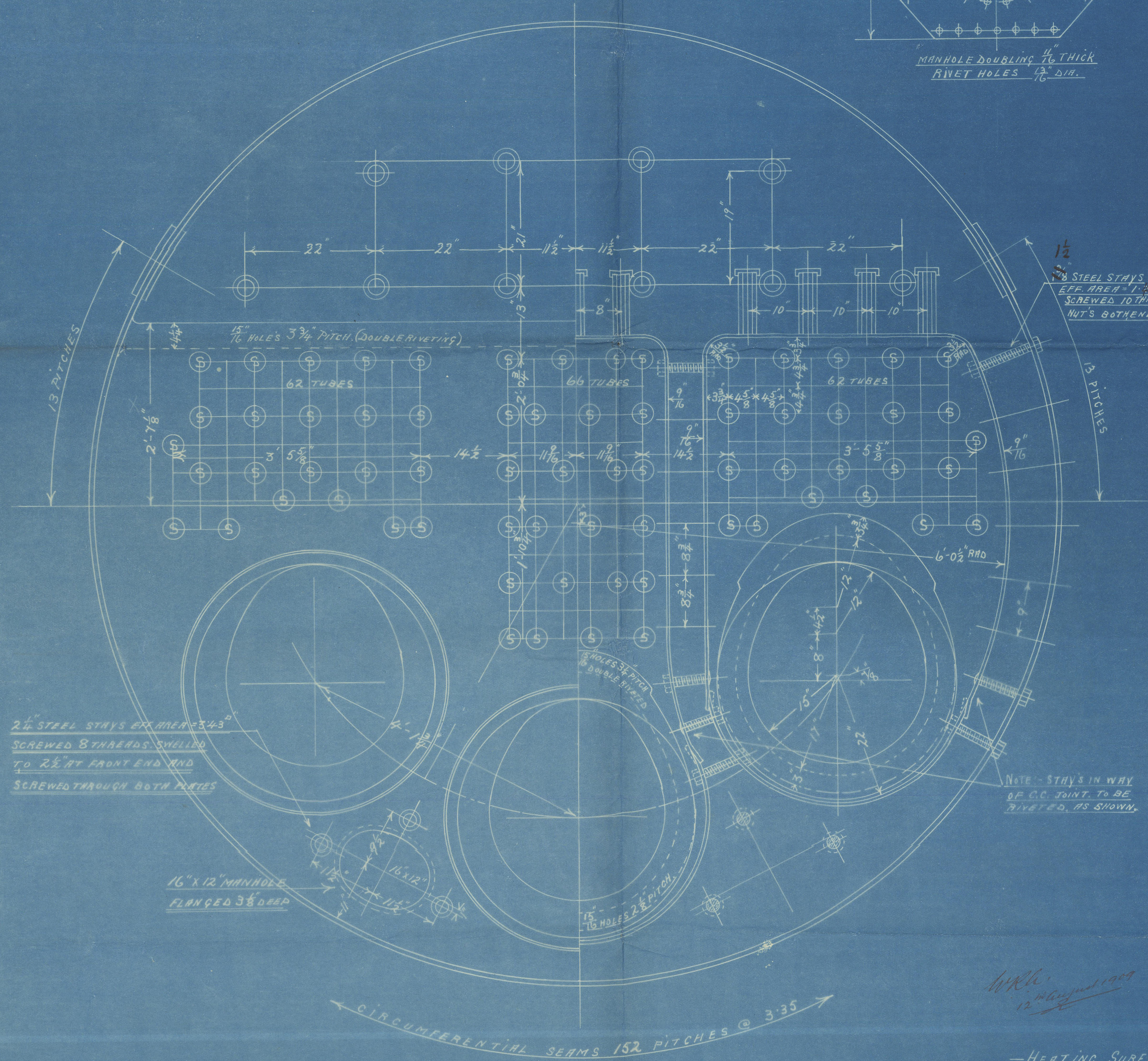
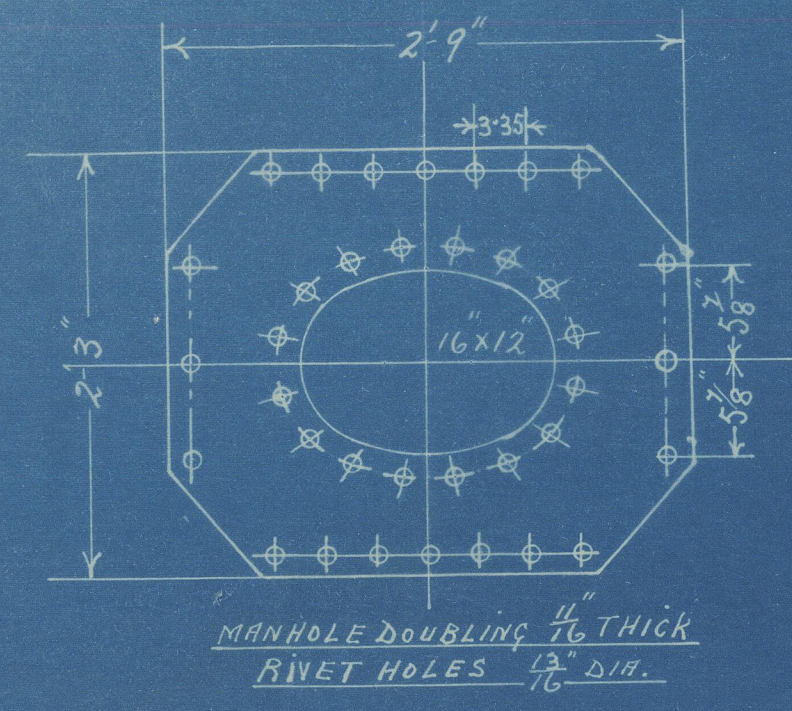


13/8/09

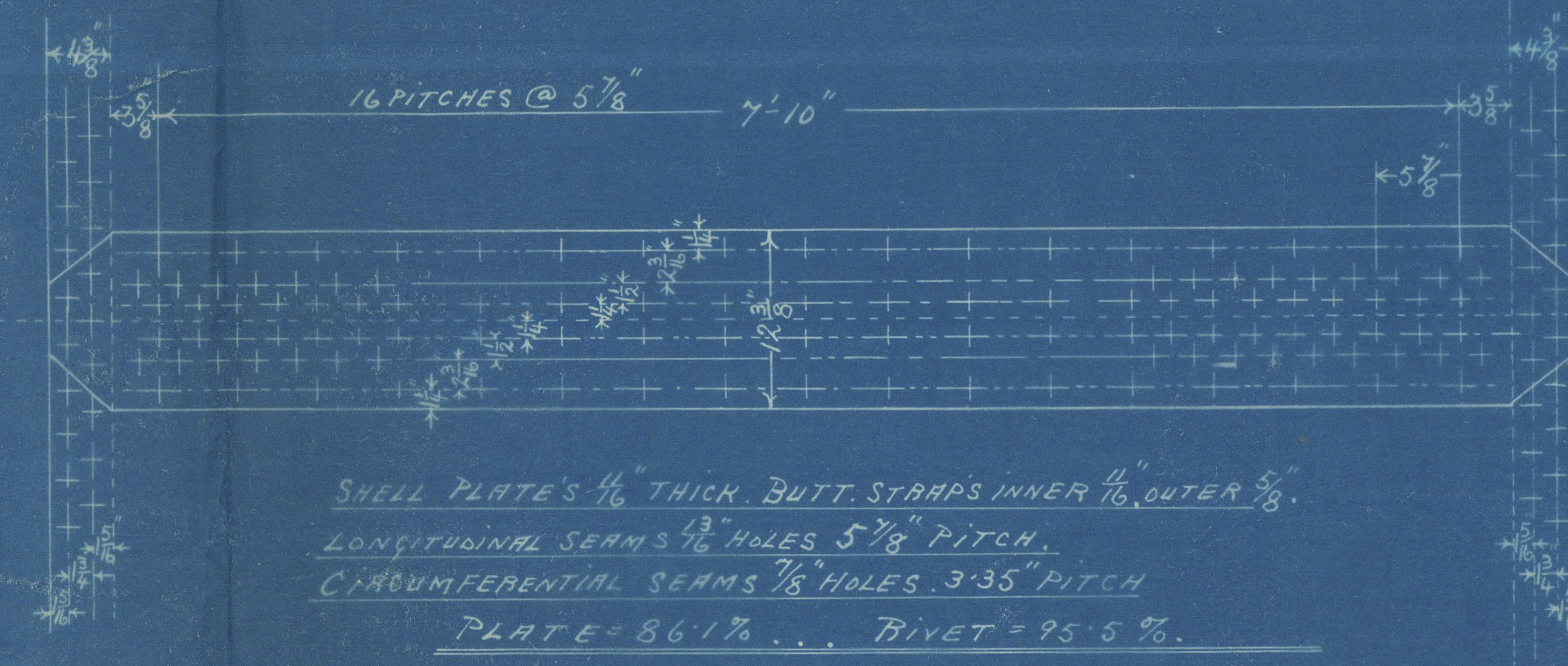


HEATING SURFACE - sq. ft.

TUBES	= 1167
FURNACES	= 120
COMP. CHAMBERS	= 213
TOTAL	= 1500

TENSILE STRENGTH OF SHELL PLATES & BUTT STAYS 28 TO 32 TONS
STEEL THROUGHOUT EXCEPT TUBES WHICH ARE OF IRON - ALL HOLES DRILLED IN PLATE
TO PASS LLOYD'S SURVEY FOR 100 LBS WORKING PRESSURE.

PLATE SURF. (BARS) = sq. ft.



PPR
13/8/09

MAIN BOILER

scale 1" = 1 foot

S O 487



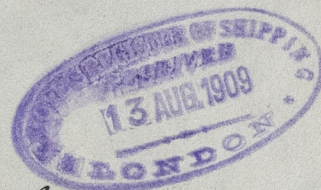
5004

Mani Boaler
(Sb. 484.)

by
Clyde & Co. Ltd.

for
S. "Muroby"

100 lbs. "walking kumuk."



Greenock Report No. 15680

GRK356-0161



© 2021

Lloyd's Register
Foundation