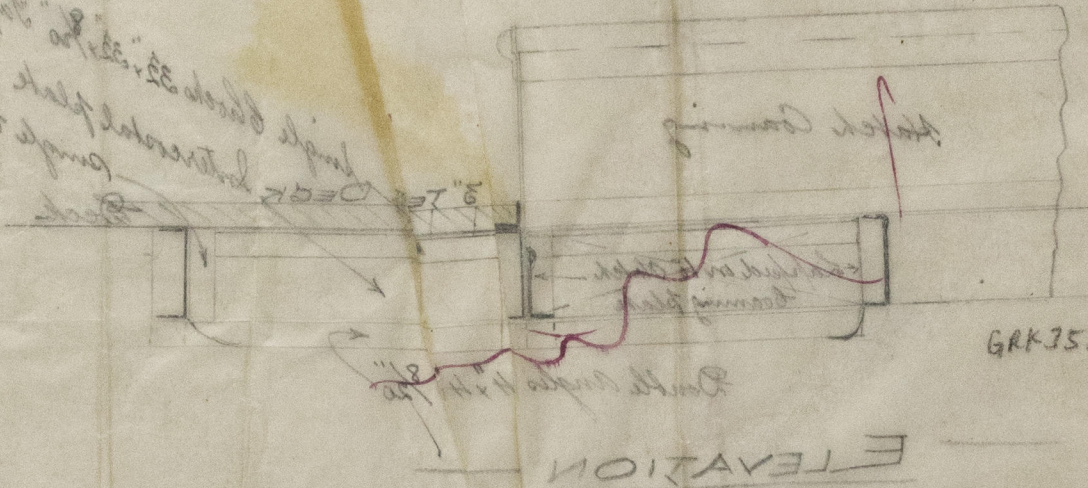
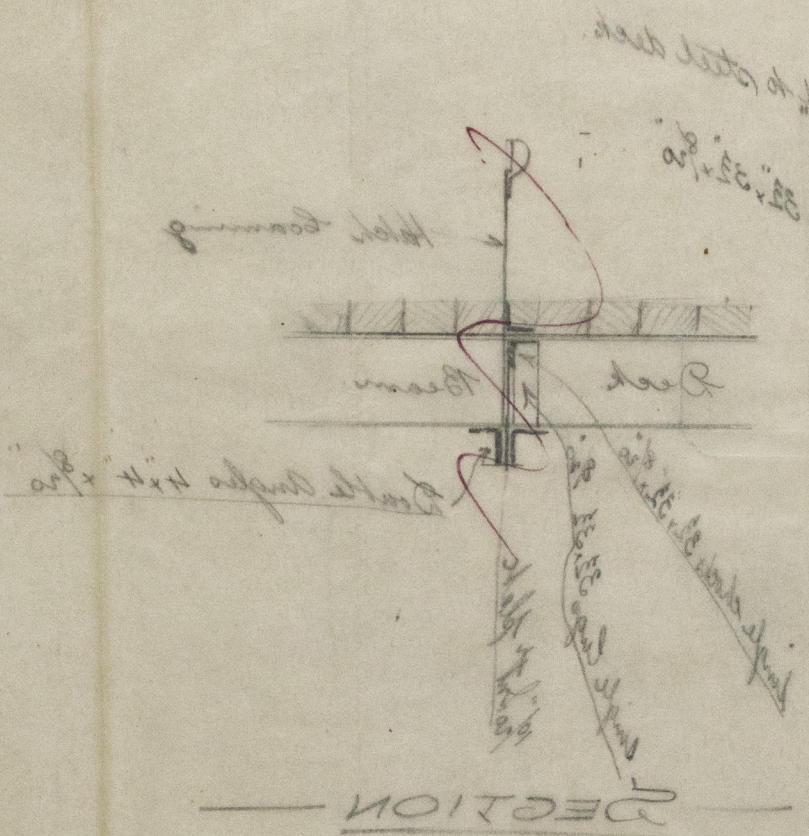
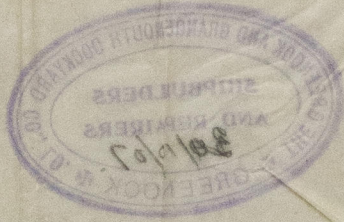


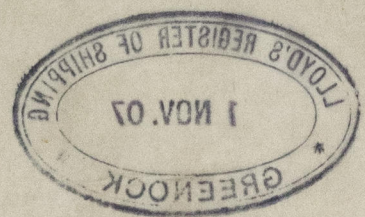
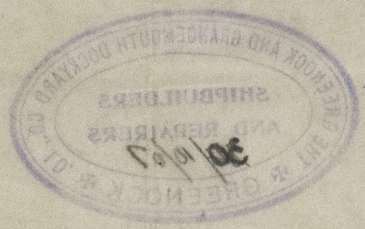
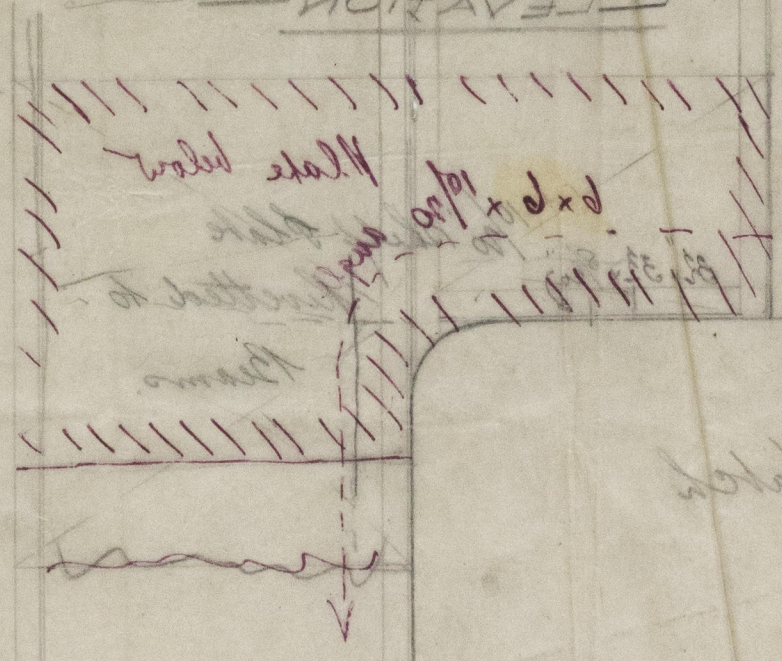
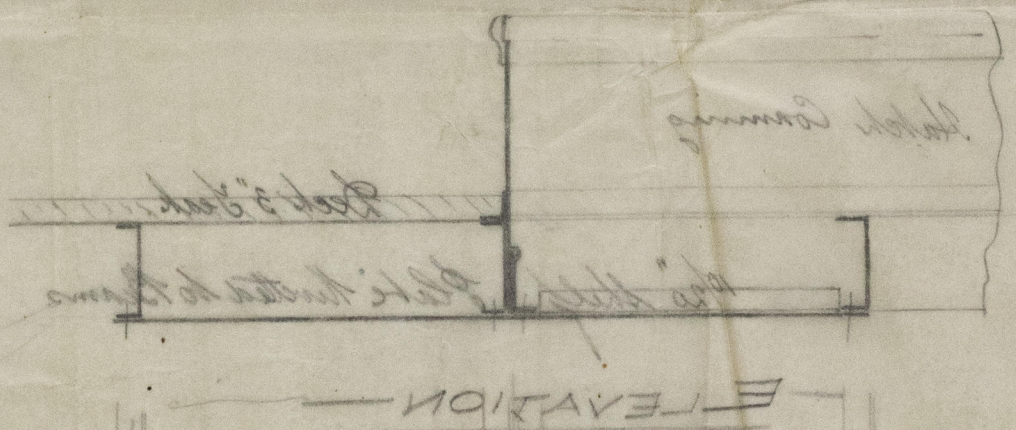
Amended Plan
 No 3 Hatch double
 M. Anglia



GRK 355-0123

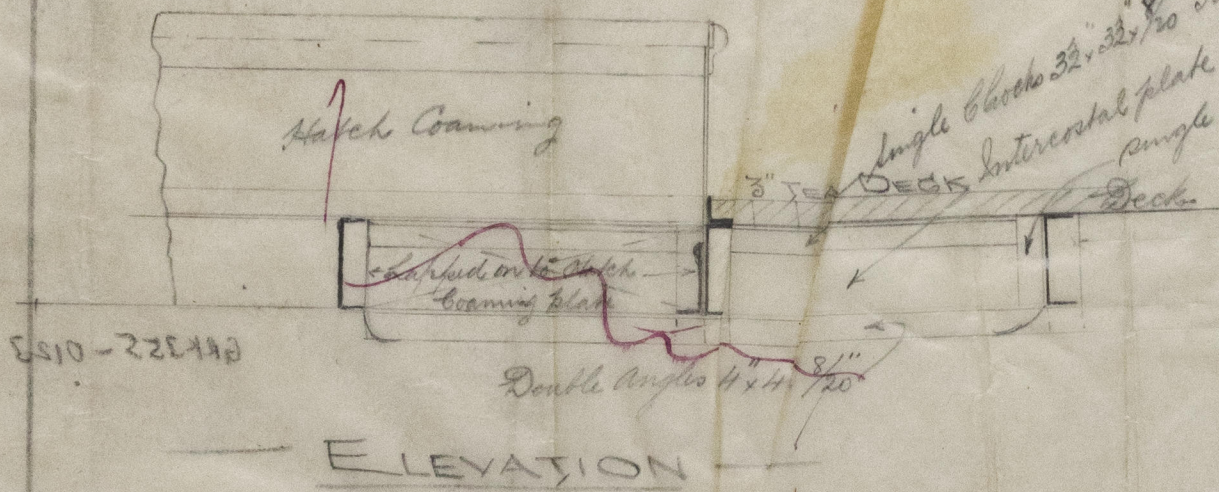


Amended Plan
 No 3 Hatch double
 M. Anglia

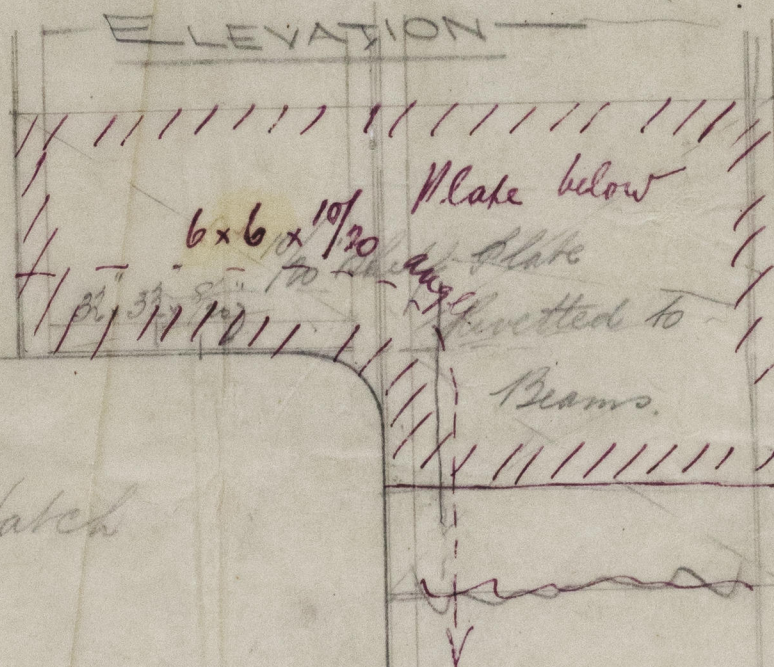
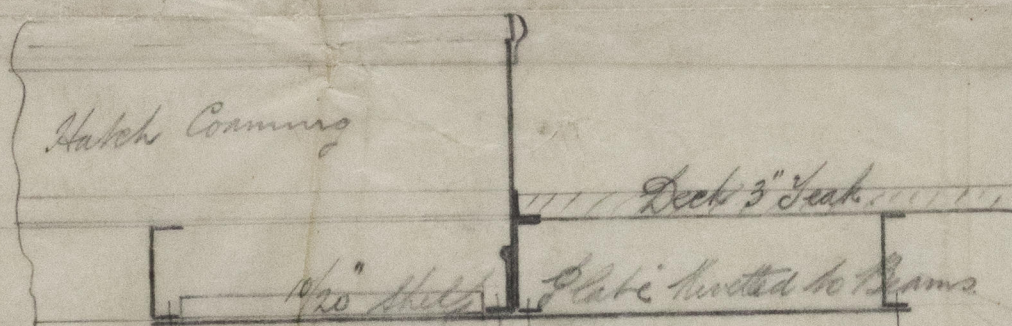
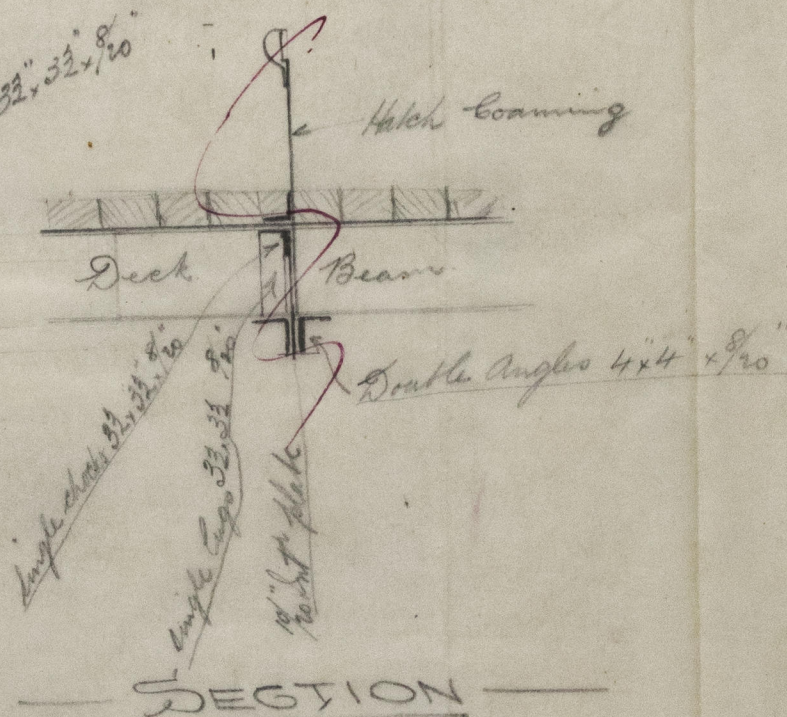
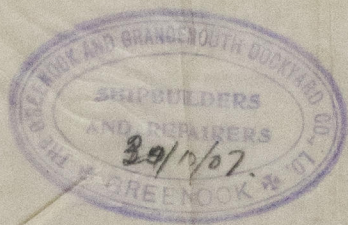


GRK 322-0153

Handwritten notes at top left:
 11/10/07
 11/10/07
 11/10/07



ES10-225492



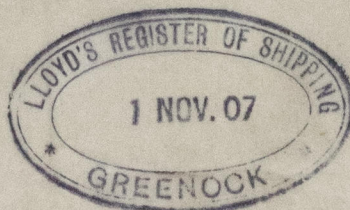
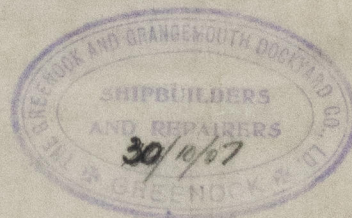
RAN

J. S. S. Jones

Proposed Arrangements in Lieu

of Deck Draining at Hatch Corner to Upper Deck

Scale 3" = One foot



© 2020

Lloyd's Register Foundation

GRK355-0123