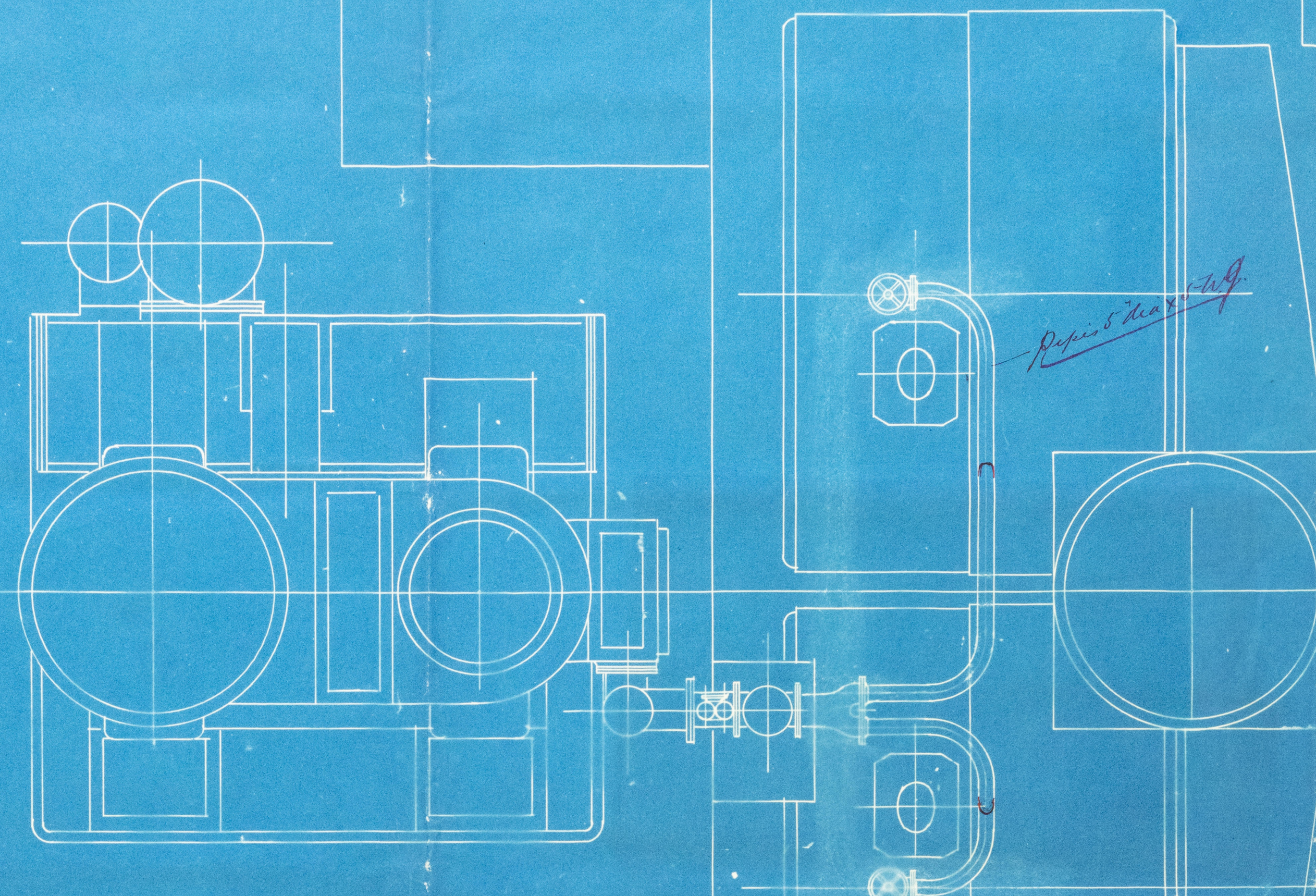
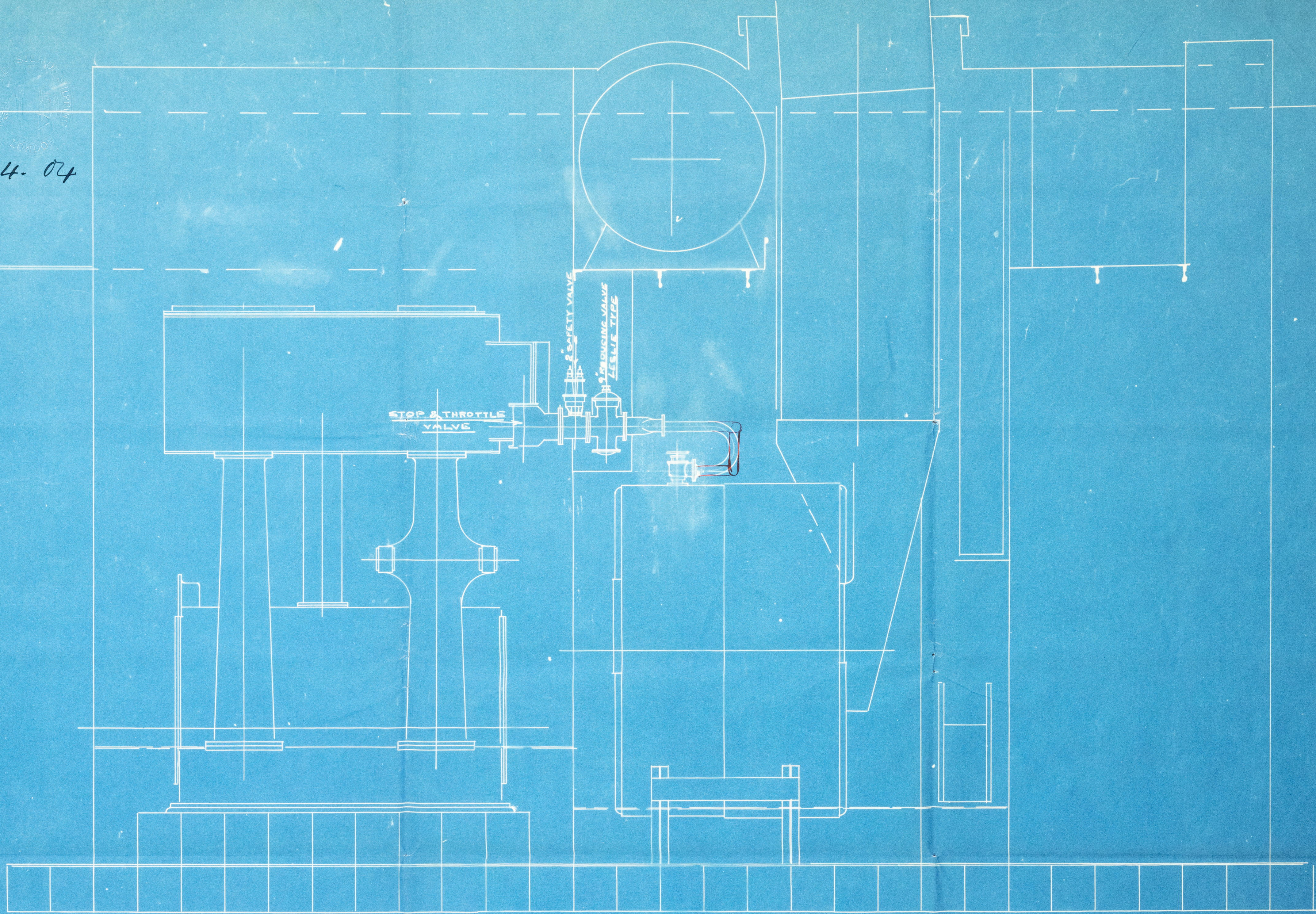


6. 4. 04

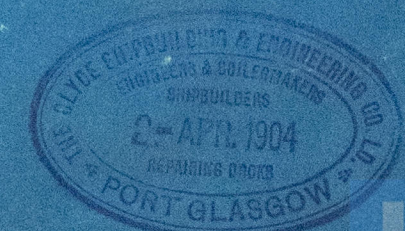


SS. BRIARDENE  
AMENDED PLAN  
SHEWING ARRANGEMENT  
OF STEAM PIPES  
SCALE 3/8" = 1 FOOT

*W.R.H.  
11/10/1904*

*See elevation attached  
J.M.  
5/4/04*

*App'd 7/14/04*



From  
The CLYDE SHIPBUILDING AND ENGINEERING CO., Ltd.,  
For ENCLOSURE to  
*M. Lloyd's Surveyors*

**R**

EPK 354-0183 (2/2)



6. 4. 07

SS. BRIARDENE  
AMENDED PLAN  
SHEWING ARRANG<sup>T</sup>  
OF STEAM PIPES  
SCALE  $\frac{3}{8}$ " = 1 FOOT



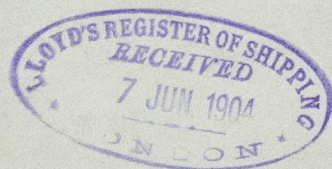
*G. Branderi*

*Arrangement of Steam paper*

*Gek report No. 13956*



GRK354-0183



© 2020

Lloyd's Register  
Foundation