

FOR
Messrs JOHN G. HINCAID & COY.
GREENOCK

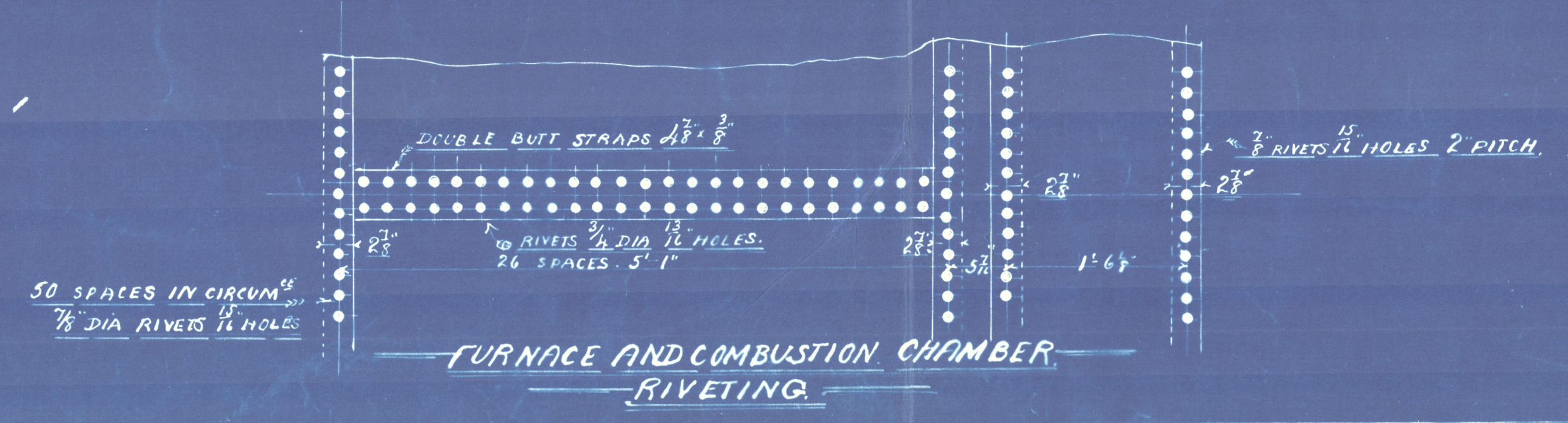
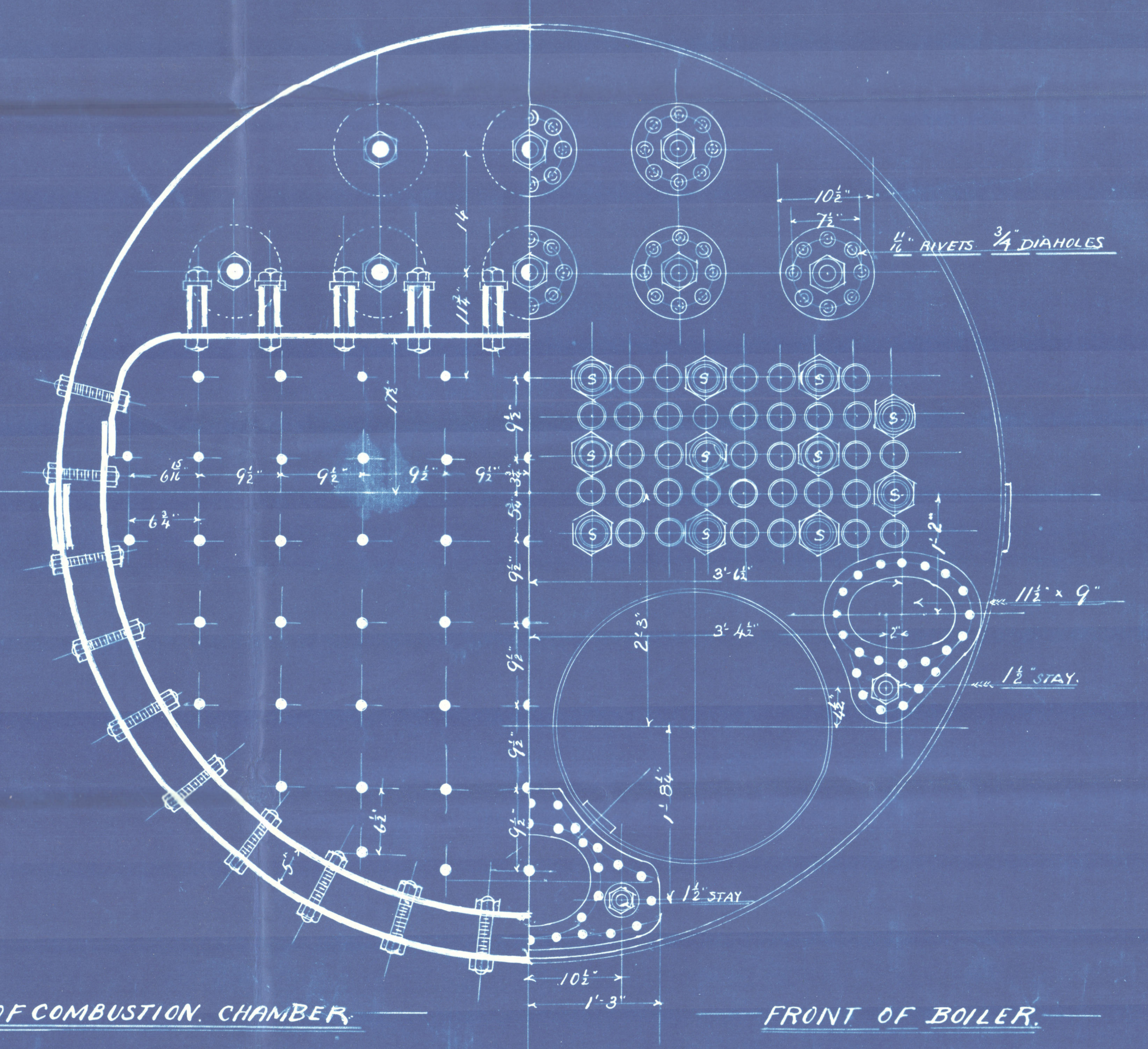
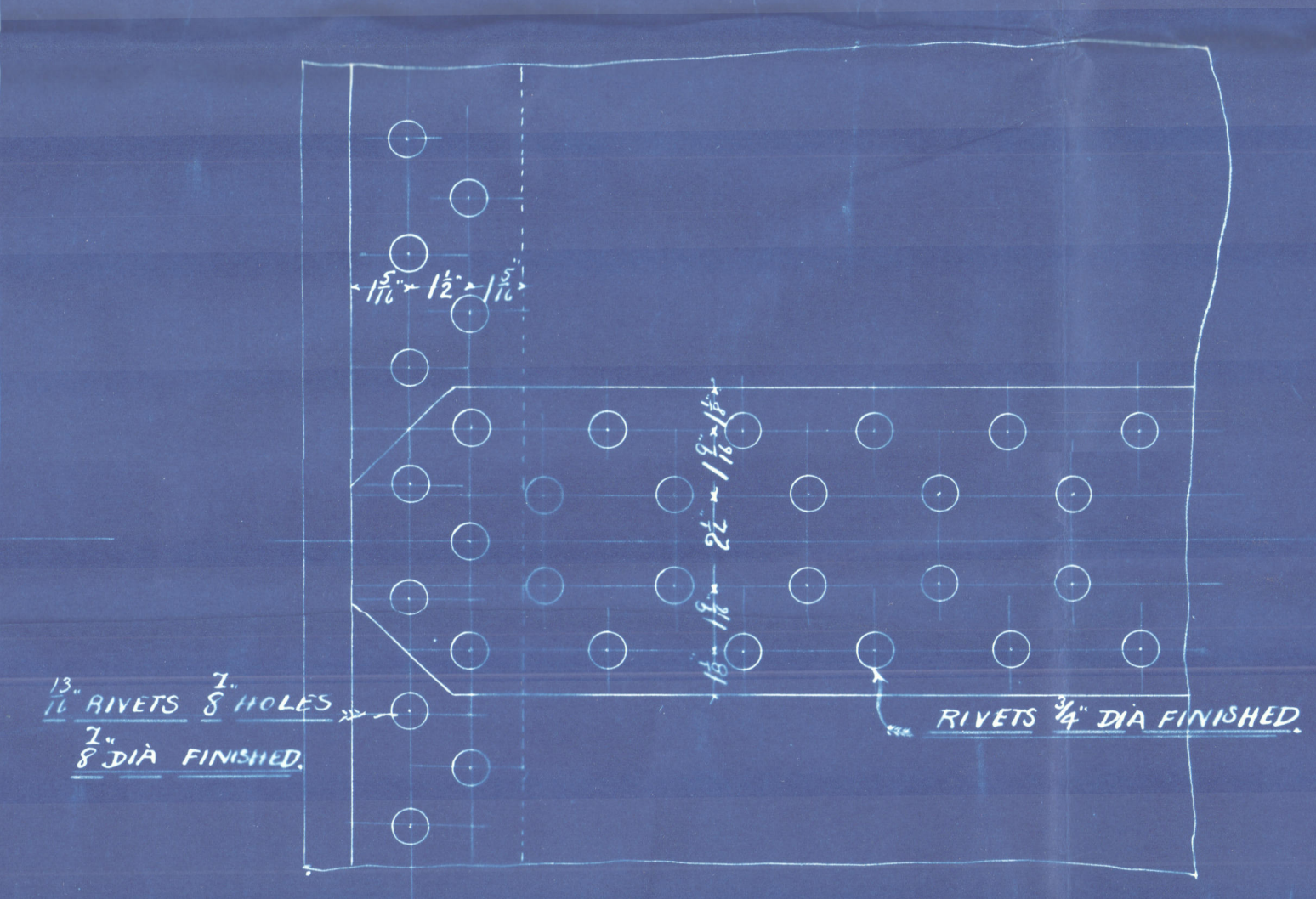
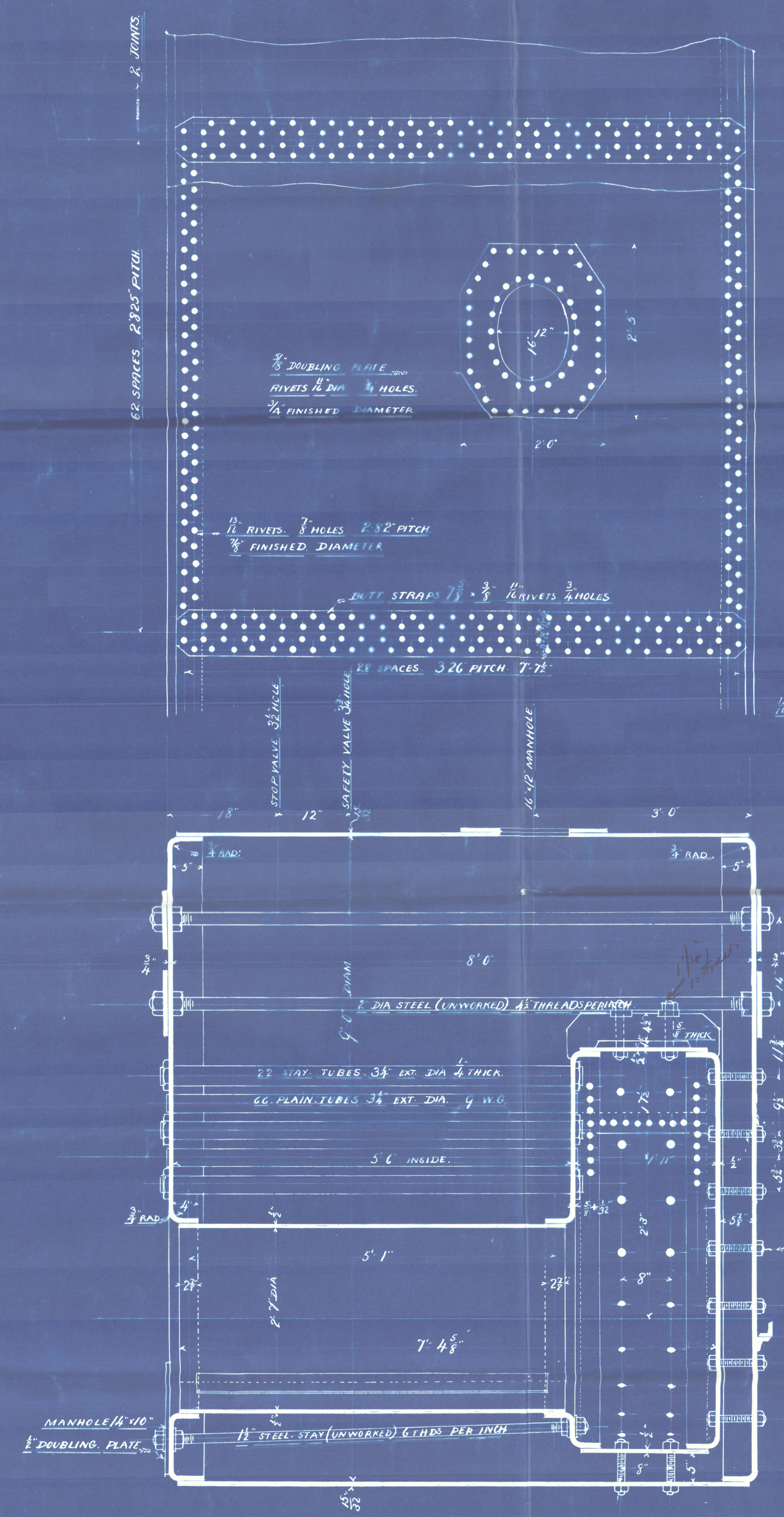
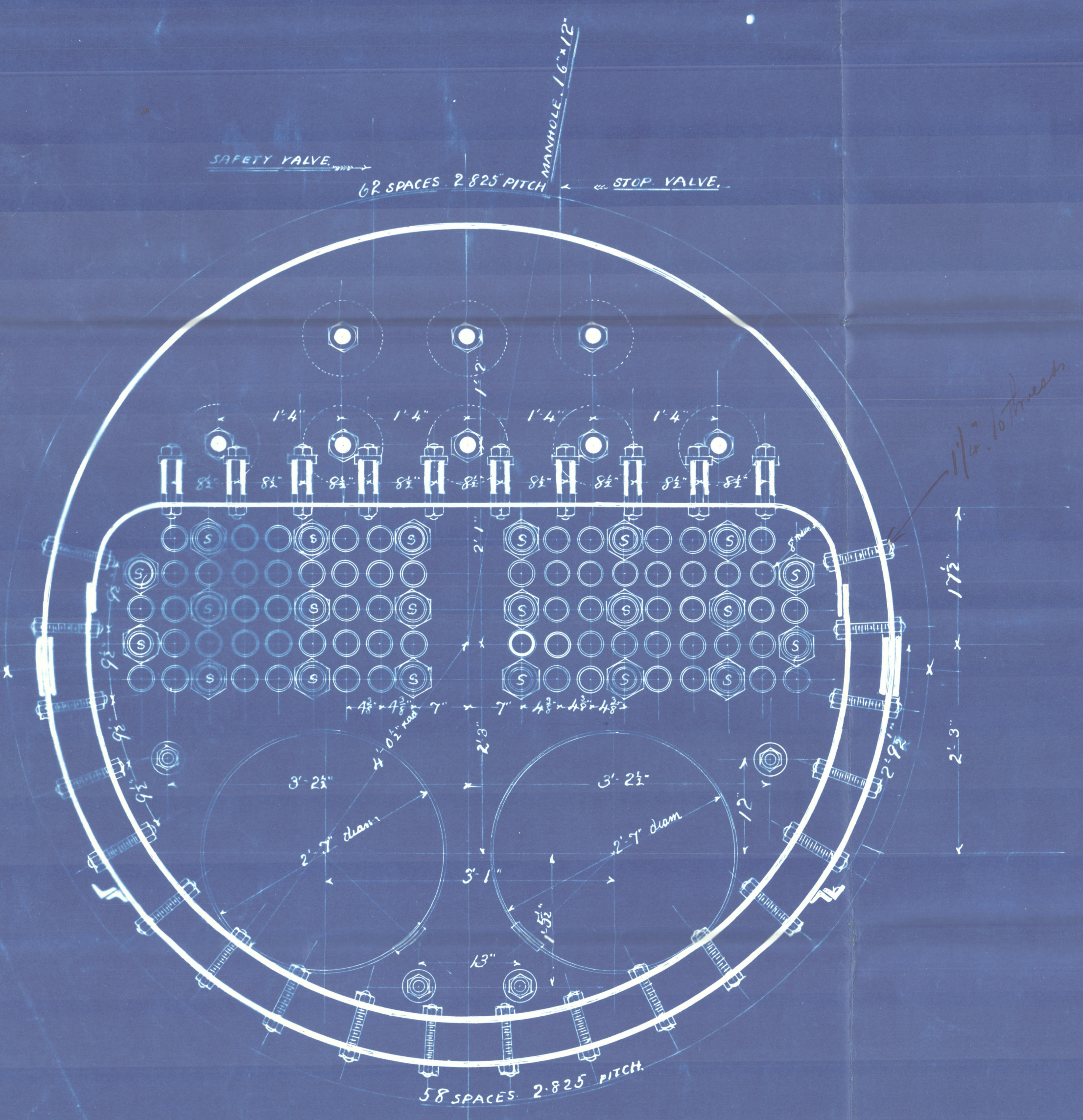
TO PASS LLOYDS REQUIREMENTS.

BOILER TO BE MADE OF STEEL. TENSILE STRENGTH 29 TONS
LONG SEAMS, DOUBLE BUTT STRAPS, DOUBLE RIVETED HOLES, DRILLED
PERCENTAGE OF PLATE SECTION: 76.99
PERCENTAGE OF RIVET SECTION: 85.99
CIRCUMFERENTIAL SEAMS, LAP JOINTS, DOUBLE RIVETED HOLES, DRILLED
PERCENTAGE OF PLATE SECTION: 68.97%
PERCENTAGE OF RIVET SECTION: 77.32
WORKING PRESSURE = 80 LBS. PER SQ. INCH
TEST PRESSURE = 160 LBS. PER SQ. INCH

MARINE BOILER 9'-0" DIAMETER 8'-0" LONG.

SCALE: 1" = ONE FOOT.

BOILER No. 202.



*Duplicate of boiler
No 197 for J.S. Selwin
C/o report to 1913
Plan approved 1909/99*

A. E. CRAIG & COY. LIMITED.
CALEDONIA ENGINE WORKS.
BRISLEY, MARCH 10th 1899. AMMPL. 1149

A. F. Craig & Co Ltd 202

Russell & Co
No 457

S. J. Linn

Grapt no. 17719

Grapt no. 12621.

GRK350-0167



© 2020

Lloyd's Register
Foundation