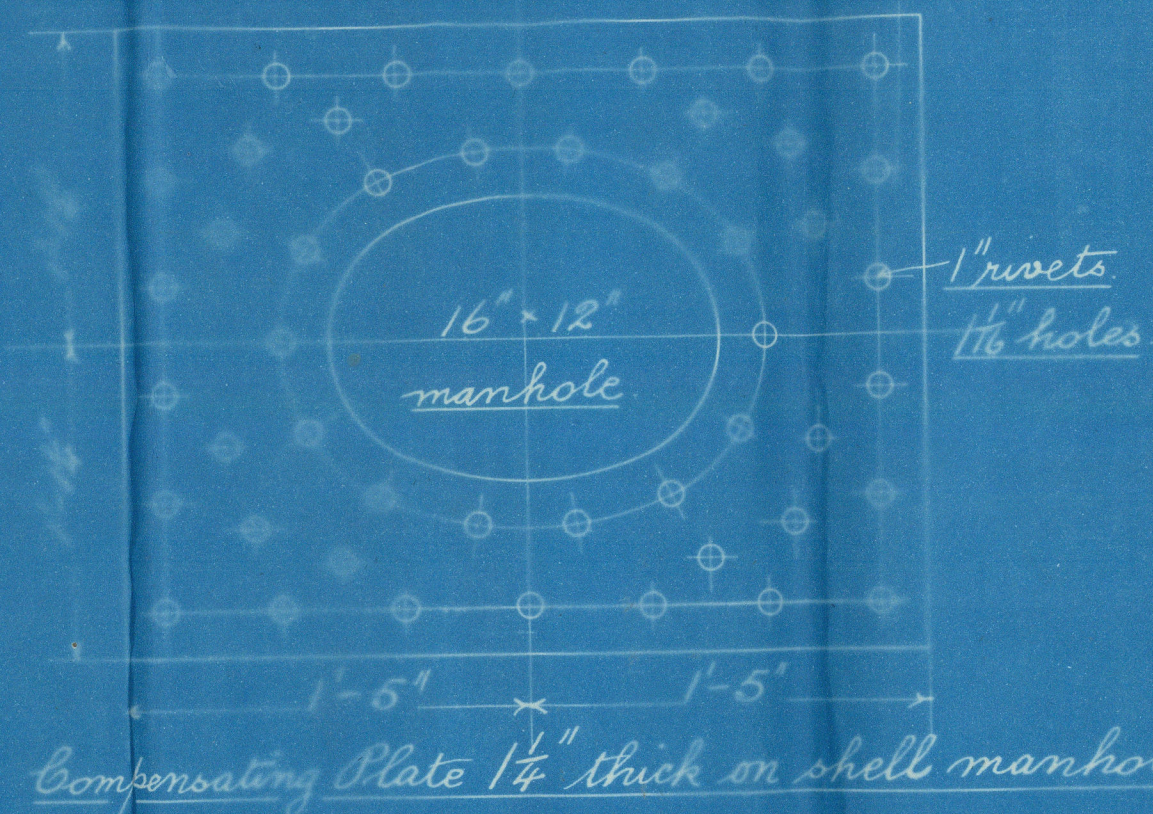
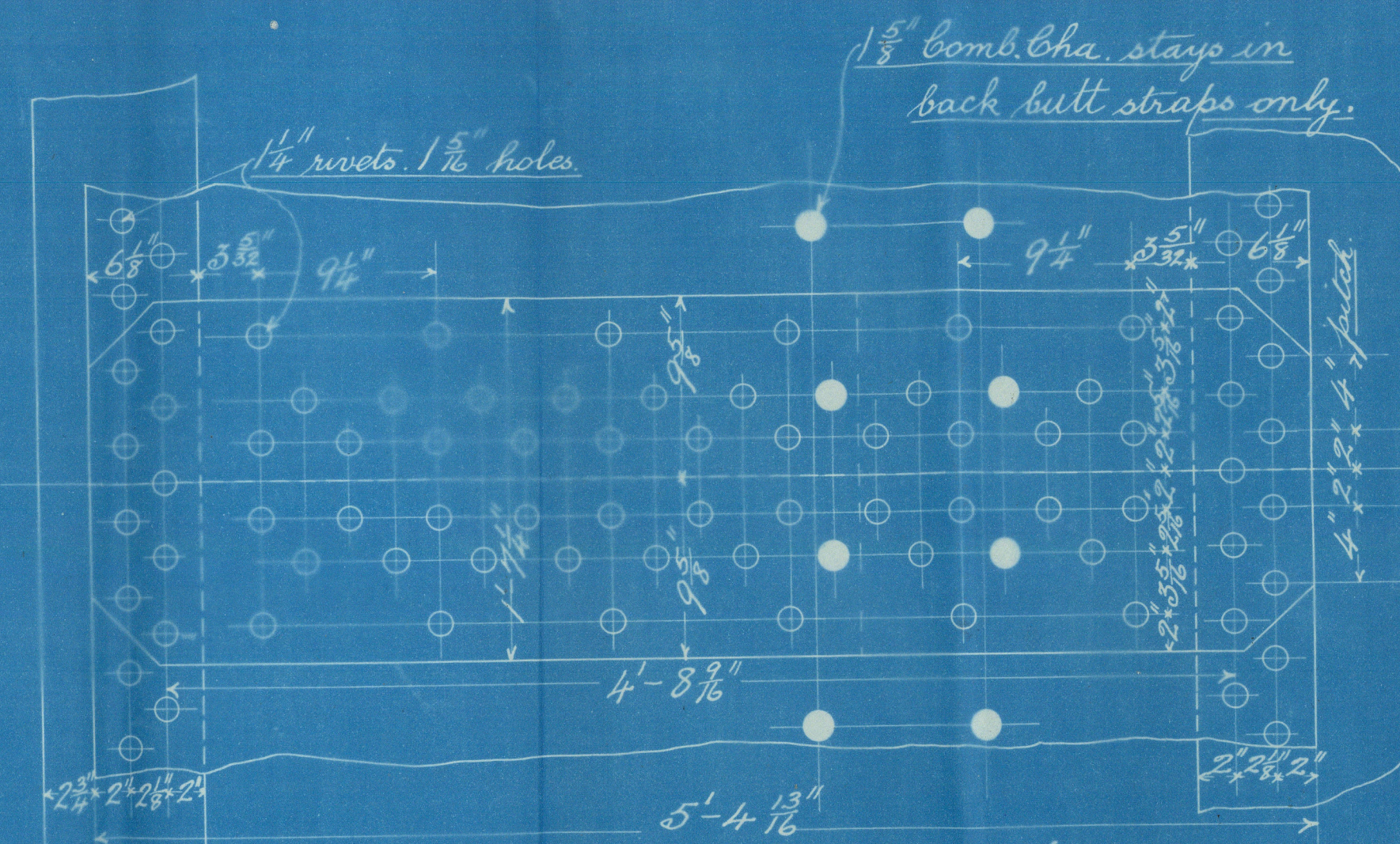


26. 11. 98

Particulars	
Heating Surface 283 Tubes	1902
3 Furnaces	163
3 Comb. Cha.	245
Total	2310
Grate Area 9" bars	63.25
Area of tubes	14.95
Ratio	4.3
Ratio of tubes	36.52
Ratio of grate area	4.23
Steam Space	44.5

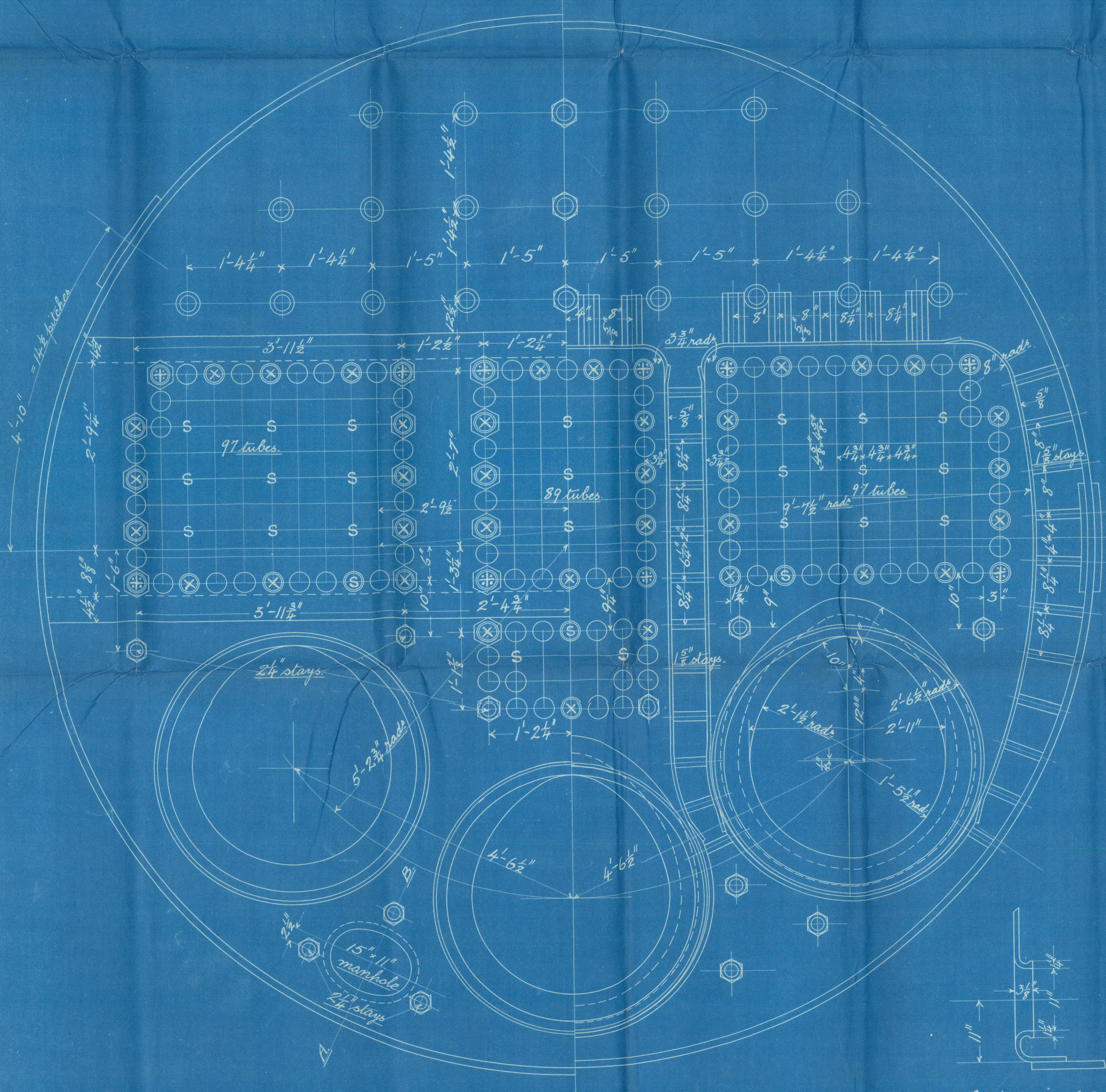


SCALE 1/2" = 1 FOOT.



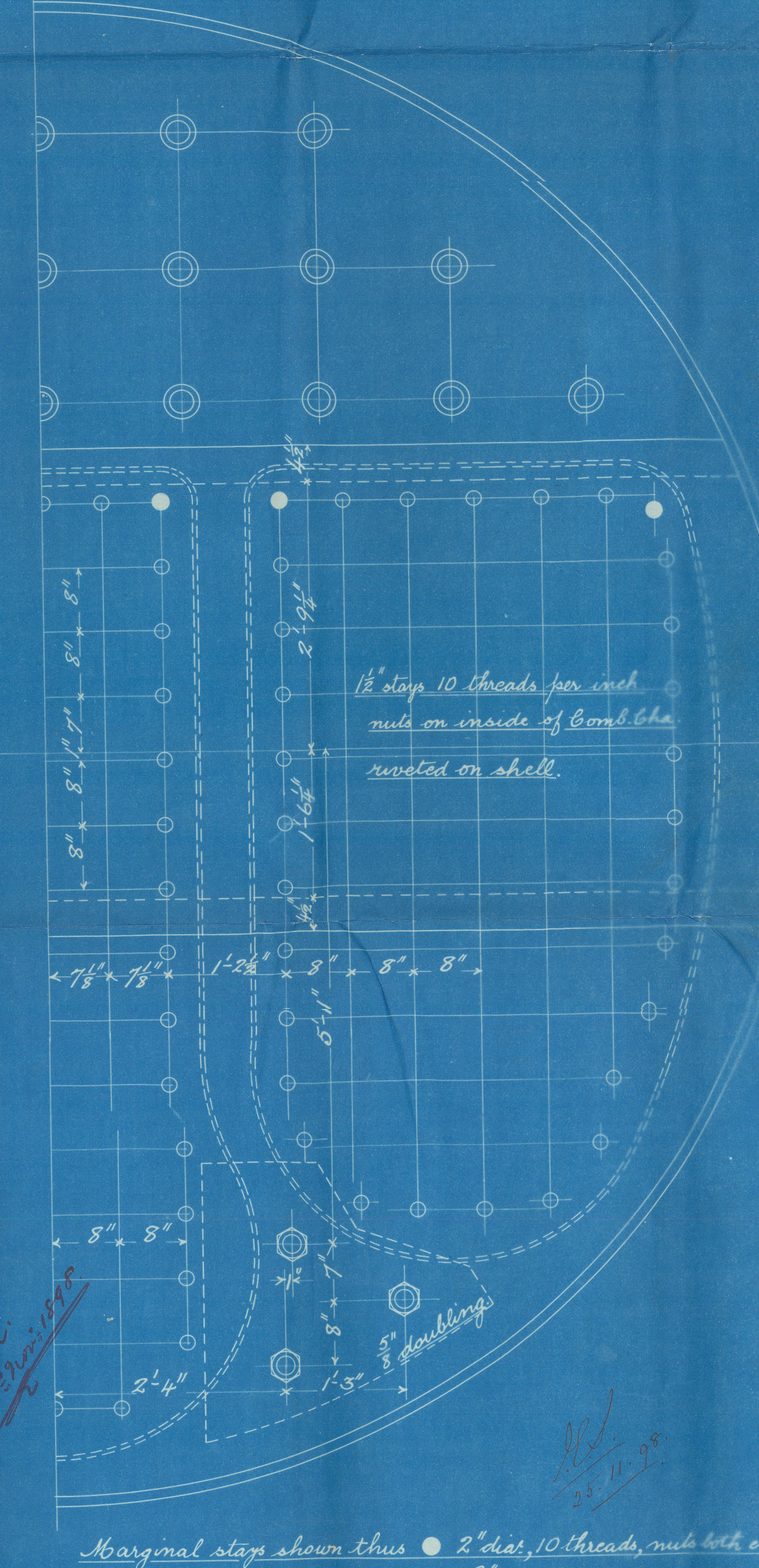
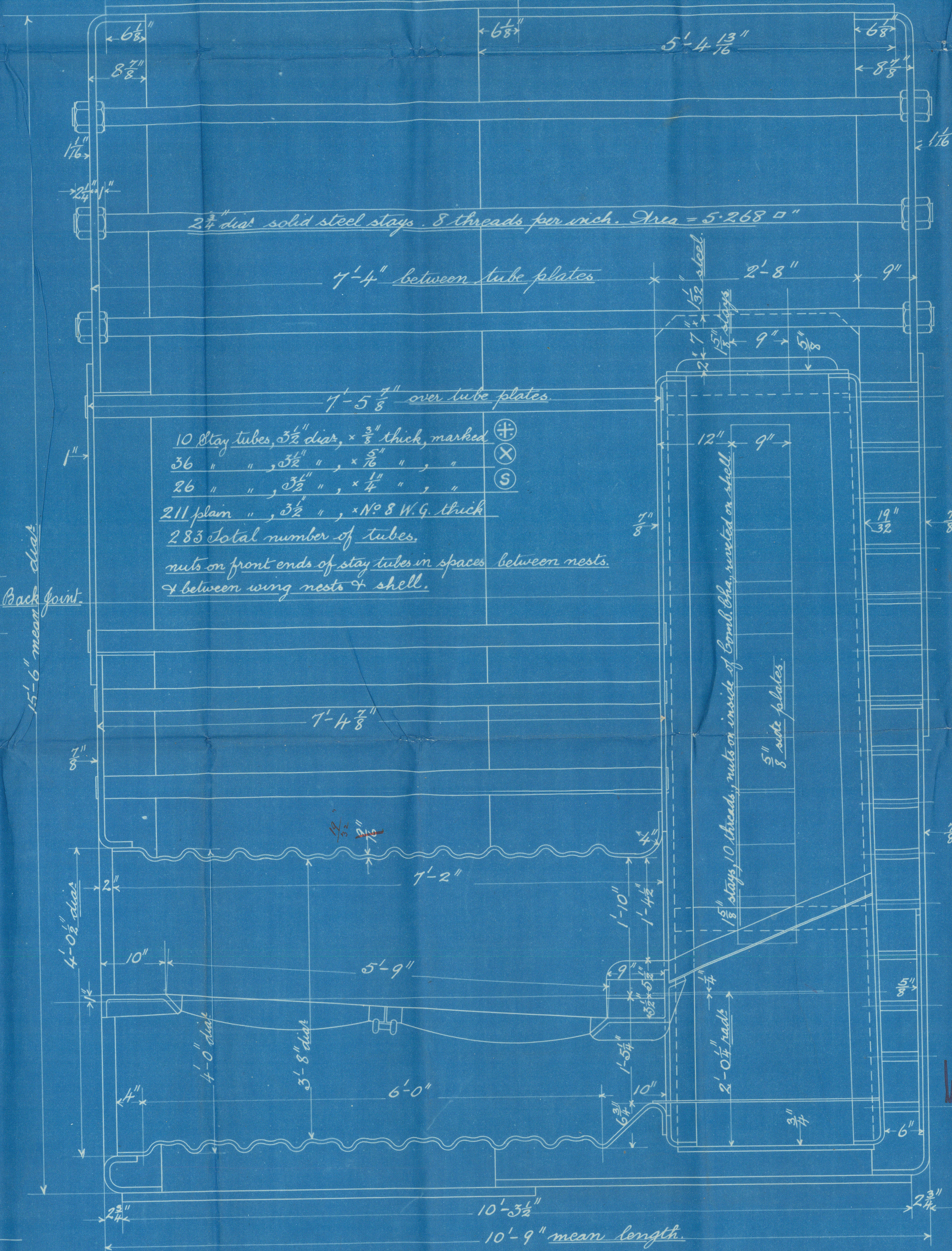
Detail of Shell Riveting.

Riveting.
Longitudinal Seams
 Shell 1 1/4", Rivets 1 1/2", Holes 1 3/8", Pitch 9 1/4".
 Plate % = 85.81, Rivet % = 87.03.
 Butt Straps inner 1 1/2", outer 1 1/2".
 Shell plates & butt straps to have a minimum tensile strength of 28 tons per sq. in. & a maximum of 32 tons per sq. in.
Circumferential Seams
 Rivets 1 1/4", Holes 1 1/2", Pitch 4".
 Plate % = 67.18, Rivet % = 46.
 All holes drilled in place. Boiler steel tubes iron.
 McNeil's patent manhole doors.
 Under Lloyd's Survey for a working pressure of 180 lbs per sq. inch.



Section on A.B.

SCALE 1" = 1 FOOT.



Marginal stays shown thus 2" dia., 10 threads, nuts both ends.
 " " " " 1 3/4" dia., 8 " " "

2 Steel Boilers for No 207. - repeat for No 208.



Main Boole's

by

K-207-8

Dunsmuir Jackson
for

H. Hamilton 168K-157-2

180th working press

Tested 16/10/99.

S.S. Adalo

Gpk 12573.

~~Gls Rpt no. 17432~~

as Quota

Gpk 12651.

GRK368-0112

© 2021

Lloyd's Register
Foundation