

s/s "Quito" N^o 152

NOTE:- The following parts of this vessel are
joggled viz: "Frames in way of
outside strakes of shell plating"
"Reverse frames on floors in way of
outside strakes of tank top plating"

J.31

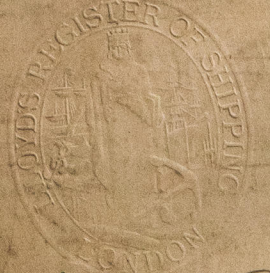


© 2021

Lloyd's Register
Foundation

GRR348-0111(1/2)

rivetted for 20 feet at ends
at each end of



14.11.98
13.1.99

MIDSHIP SECTION.

S.S. No 151 and 152

DIMENSIONS.

LENGTH B.P. 330' 0"
BREADTH EXTREME 45' 6"
DEPTH M.O. TO SPAR DECK 36' 6"
Class 100 H.I. Spar Deck with Freeboard
SCALE 1/4" = 1 FOOT.



Steel Deck on Top of Bridge 7/20
5" Wood deck on Forecastle

Top & Bridge Beams 6" x 3" x 1/2" Single angle on every frame.
Forecastle Beams 8" x 3" x 1/2" Butts, 3" x 3" x 1/2" on alternate frames.

Under 4th Deck

In way of Top of Forecastle 7/20
Bridge 7/20

Landings double riveted for 20 ft at each end of Bridge

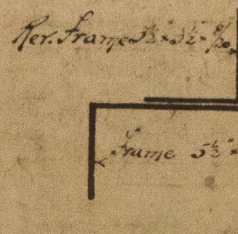
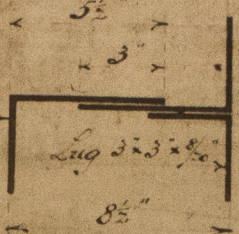
Proportions

Length in Length to Main 54' 11 1/2" - 2 = 14' 8 1/2"
" " Spar 54" = 11' 9 1/2"
Breadths in Length = 4' 2 1/2"

Section of Framing in Holds & 6' 10" Space.

per frame 6" x 3 1/2" x 1/2"

Section of Framing in Fore & After Peats.



Steel Deck 7/20 to 7/20

Beams on every frame 8" x 3" x 1/2" Butts angle.
Fore end Beams 10" x 3" x 1/2" Butts 6" x 3" x 1/2" Single angle.

Under 4th Deck

Half Girth 38' 5 1/2"
Beam 22' 4 1/2"
Depth 19' 4 1/2"
80' 7 1/2" x 328 = 26,486' 2"
33,955 Equipment numeral
Pools 31' 0" Long
Bridge 118' 0"
6 Cts. 38' 0"
Groceries 187' 0"

Quarter Pillars 3 1/2" dia. Spaced 8' 0" apart.

Equipment

2 Towers 38 Cuts to Block	270 Tails 2 3/4" Chain Cable
1 " 3 1/2" "	90 " 1 1/2" Stream Chain
1 Stream 1 1/2" "	120 " 1 1/2" Temp or 4" Steel Wire
1 Ledge 5 1/2" "	90 " 10" Hauser or 3 1/2" "
	90 " 8 1/2" Warps

Beams on all frames 11" x 3" x 1/2" Butts angle.

Beams less than 1/4th the length of the midship beam 9" x 3" x 1/2" Butts angle.

Frames 5 1/2" x 3 1/2" x 1/2" for 1/2" to 1/2" at ends spaced 24" apart.
Rel frames 6" x 3 1/2" x 1/2" to 1/2" extending up to Spar Deck stringer
of Forecastle Deck on alternate frames
Butts 1 1/2" Spaced vertically with angles 5 1/2" x 3 1/2" x 1/2" spaced 3' 6" apart.
6 horizontally with Butts angles 8" x 3" x 1/2" spaced 4' 0" apart.
Mess & Derricks beams to 1/2".
Stern 10" x 3 1/2" Stern frame 10" x 6" Rudder Stock 8 1/2" dia. head 1/2" dia. at 1/2" Plate 7/20.

RIVETTING

Butts of all Spill Raising lapped & double riveted throughout.
Butts of Spar & Main Deck stringer lapped & double riveted.
Butts of Middle Line Strake of inner bottom lapped & double riveted throughout.
Butts of Margin Plate lapped & double riveted throughout.
Butts of Inner Bottom Raising lapped & double riveted for 1/2" L. Single at ends.
Butts of Centre Riser lapped & double riveted throughout.
Butts of Spar Deck Raising lapped & double riveted for 1/2" L. Single at ends.

Ceiling 2 1/2" laid of battens 1 1/2" thick
Inner bottom 7/20
7/20 in boiler space.

7/20 in 1/2" to 1/2" ends

For frames 5 1/2" x 3 1/2" x 1/2" to 1/2"

Solid floors of every frame 7/20 in boiler space.

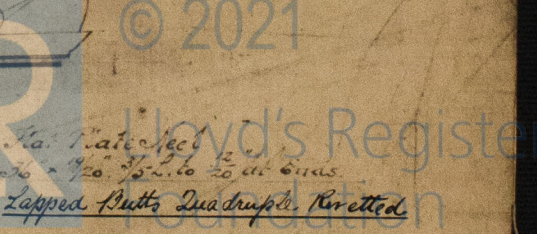
3 1/2" x 3 1/2" x 1/2"

Frames 3 1/2" x 3 1/2" x 1/2" to 1/2"

Centre Riser Continuous
40" x 7/20 to 7/20
4 1/2" x 4 1/2" x 1/2"

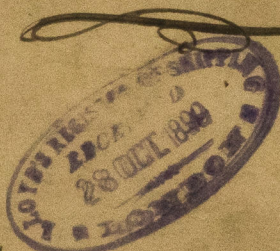
9/11/98

14/11/98





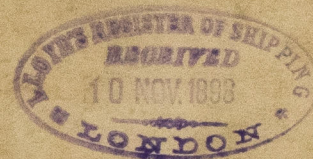
Midship Section
Wm Hamilton P.C. No 15142



S. Adams
Grk 12573

S.S. "Quito"
Grk report No 14657

GRK348-0111 (2/2)



© 2021

Lloyd's Register
Foundation