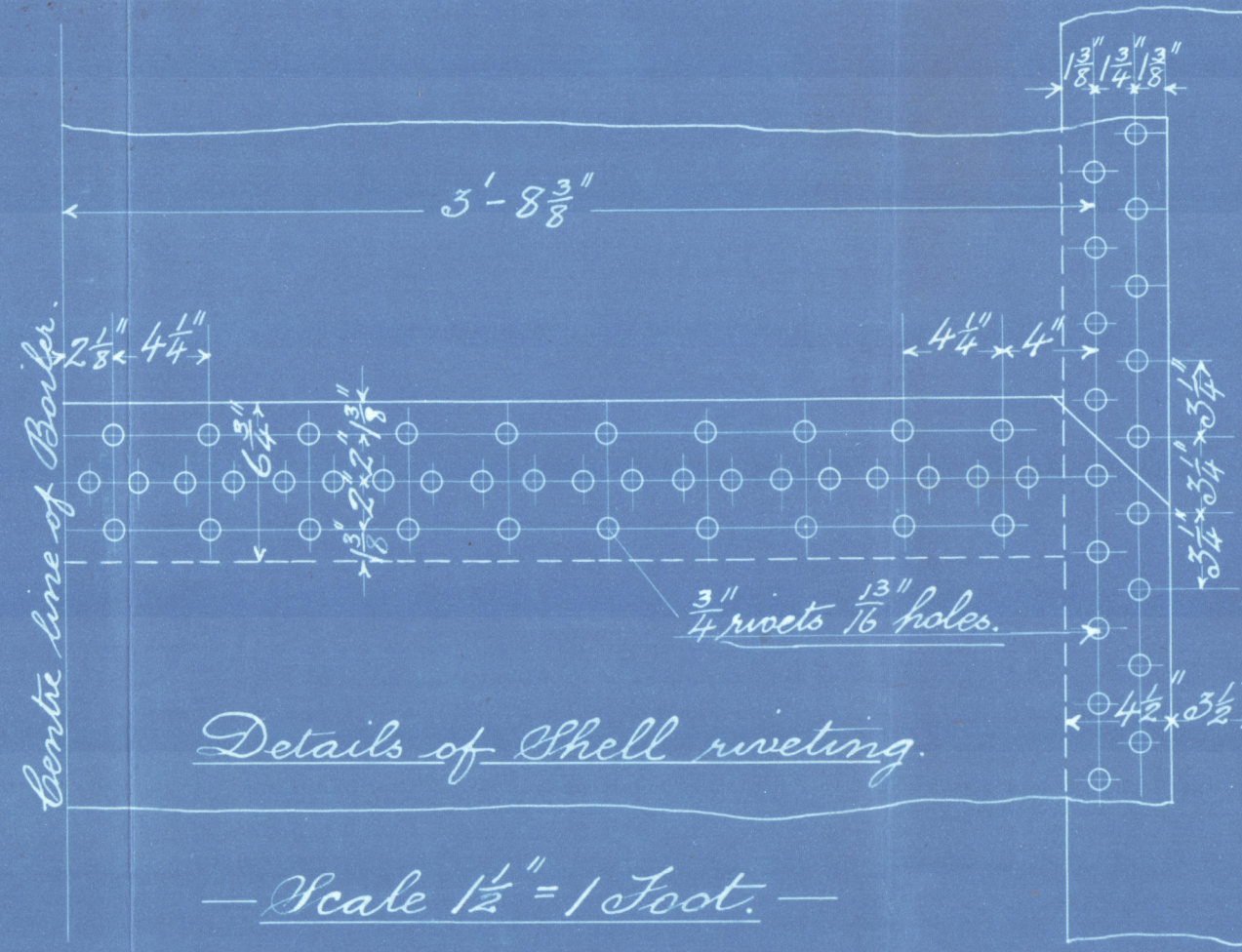
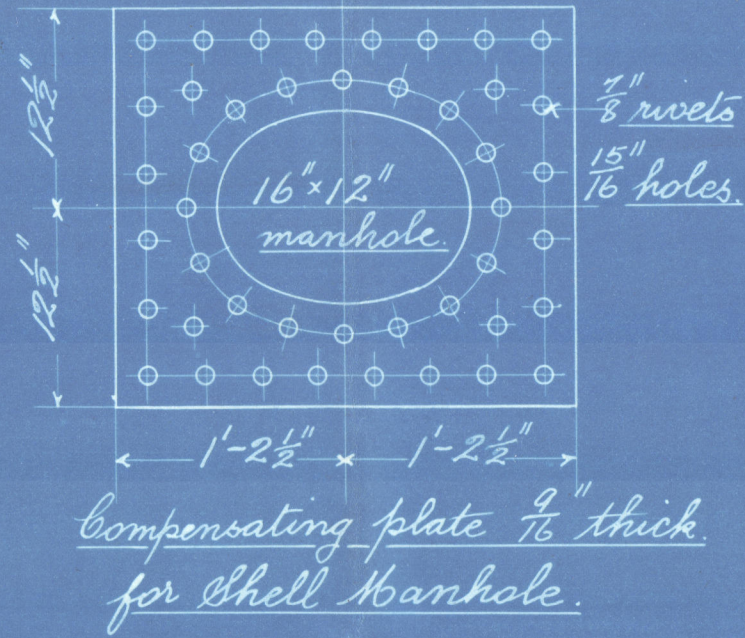


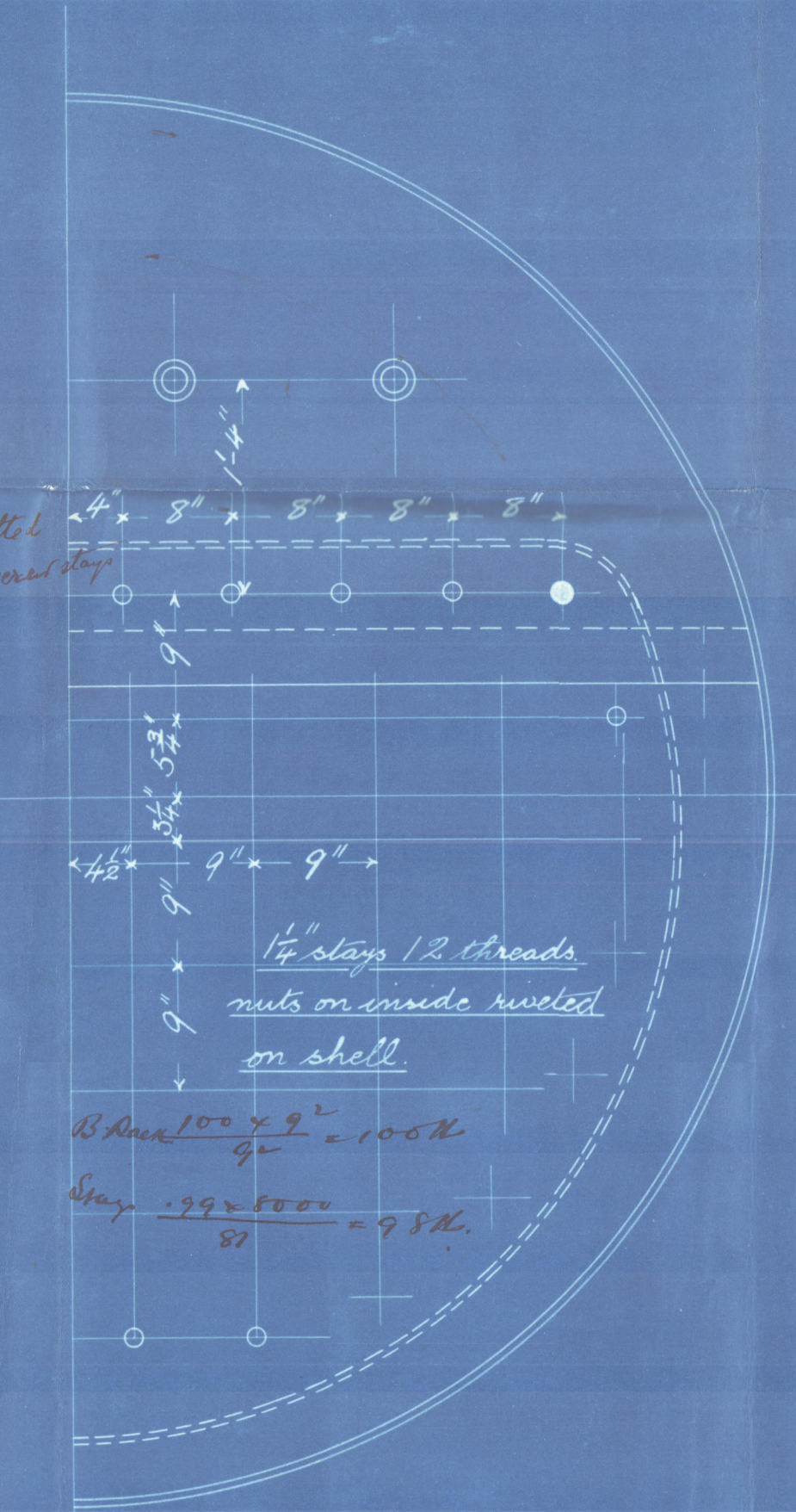
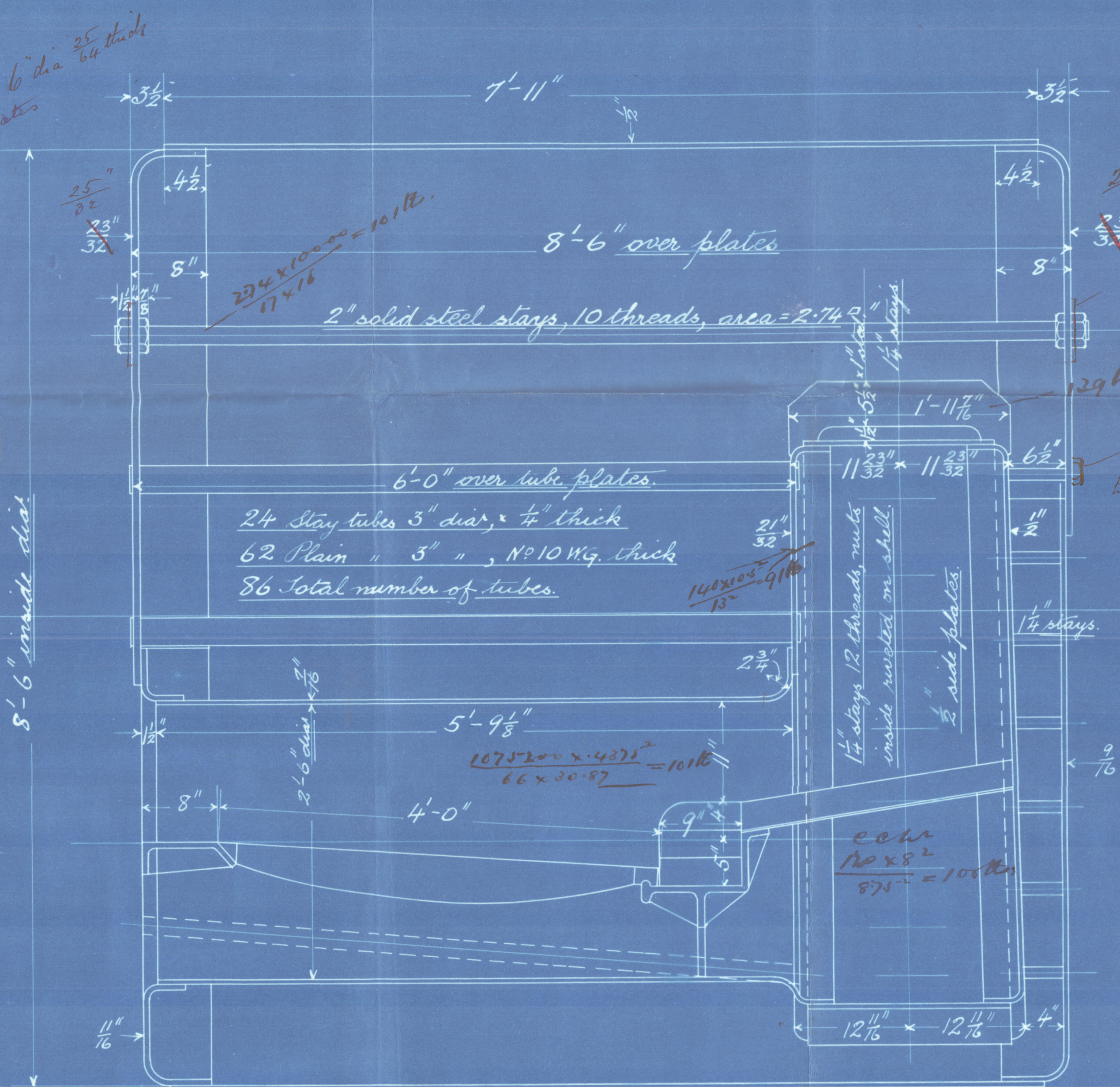
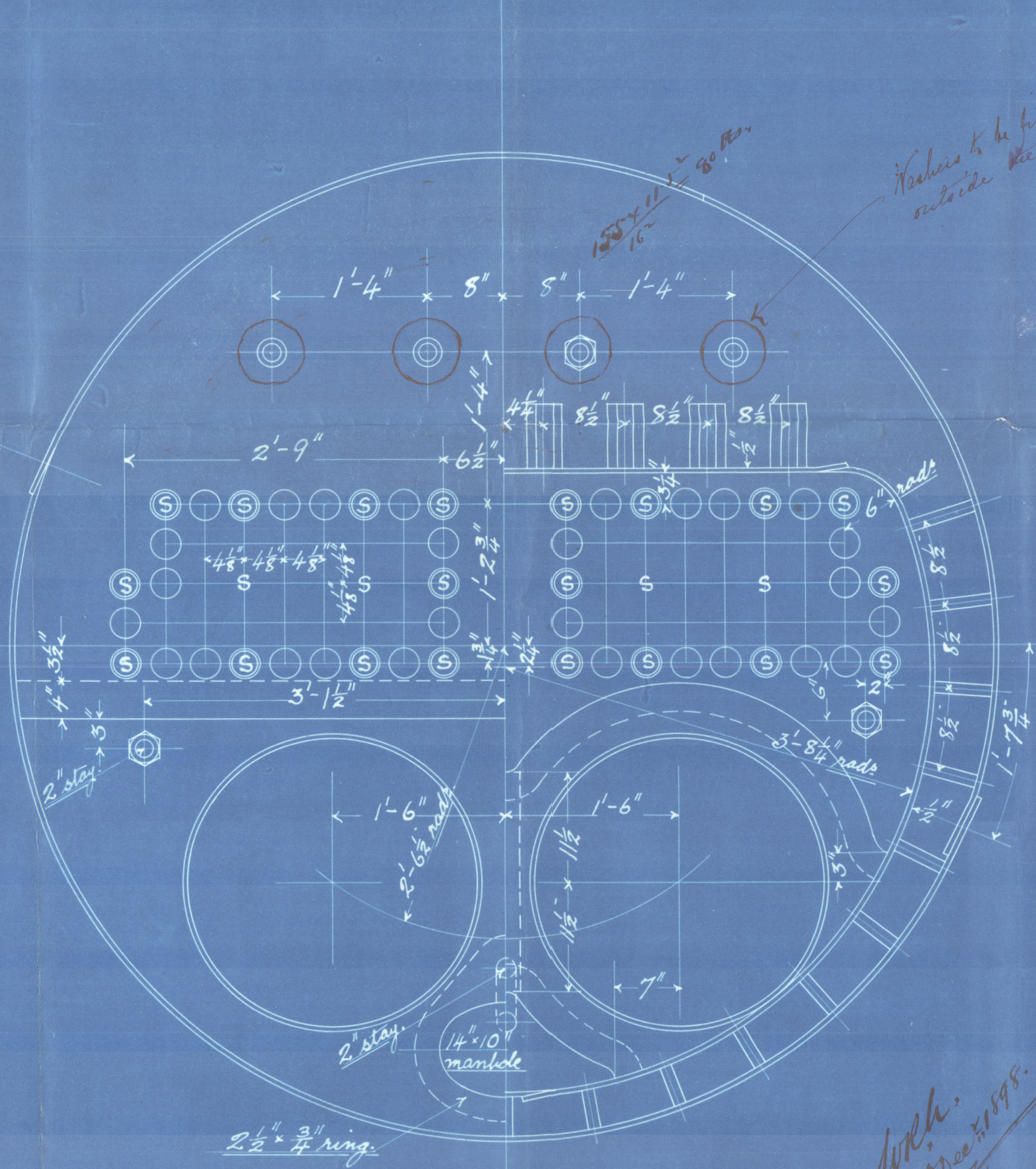
8.12.98
LLOYD'S REGISTER
ON
ON

Particulars.

Heating Surface (86 Tubes)	397.6 #
" " 2 Furnaces.	54.6 #
" " 1 Comb. Cha.	59.7 #
" " Total.	511.9 #
Grate Area (4'-0" bars)	20 #
Area through tubes	3.36 #
Ratio $\frac{G.A.}{H.S.} =$	$\frac{1}{25.6}$
" $\frac{\text{Area through tubes}}{G.A.} =$	$\frac{1}{5.95}$
Steam Space	98.4 cu. ft.



Riveting.
Longitudinal Seams.
Shell $\frac{1}{2}$ ", Rivets $\frac{3}{4}$ ", Holes $\frac{13}{16}$ ", Pitch $4\frac{1}{4}$ ".
Plate % = 80.88 Rivet % = 82.9
Shell plates to have a minimum tensile strength of 28 tons per sq", & a maximum of 32 tons per sq".
Circumferential Seams.
Rivets $\frac{3}{4}$ ", Holes $\frac{13}{16}$ ", Pitch $3\frac{1}{4}$ ".
Plate % = 75., Rivet % = 54.24
All holes drilled in place, Boiler steel, Tubes iron.
Under Lloyd's survey for a working pressure of 90 lbs per sq".
16" Neil's door in shell.

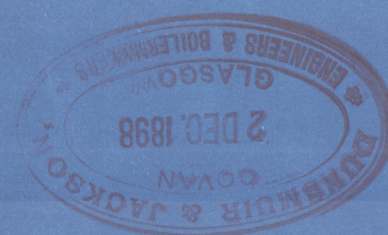


Marginal stays shown thus \bigcirc $\frac{1}{8}$ " dia, 10 threads, nuts on both ends.
Marginal stays shown thus \bullet $\frac{1}{2}$ " dia, 10 threads, nuts on both ends.

— 1 Steel Donkey Boiler for No. 207. —

— Repeat for No. 208. —

Scale 1" = 1 Foot.



Mult. Steel Donkey Bolts
by

Dunsmuir & Jackson
K^o 207-8

for

W. Hamelton & Co K^o 15-1-2 1/2

90 lbs "working press"

Tested 16/10/99.

S.S. Adato
Grk 12573

~~Grk Rpt No. 17432~~

GRK 348-0110



© 2021

Lloyd's Register
Foundation