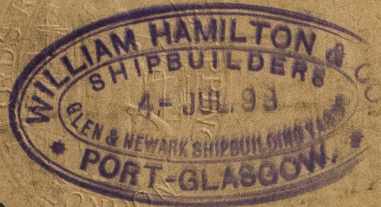


MIDSHIP SECTION.

S. S. No-144.

DIMENSIONS.

LENGTH B.P. 330' 0"
BREADTH EXTREME 45' 6"
DEPTH MLD. TO SPAR DECK 36' 6"
Class 100 H.I. Spar Deck with Freeboard.
SCALE 1/2" INCH = 1 FOOT.



Steel Deck on Roofs & Bridge 7/20
3" Wood deck on Forecastle

Roof & Bridge Beams 6" x 3" x 7/20 Single angle on every frame.
Forecastle Beams 8" x 3" x 7/20 Built, 3" x 3" x 7/20 on Alternate Frames.

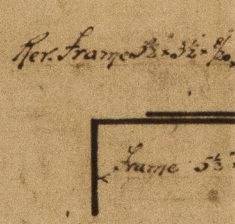
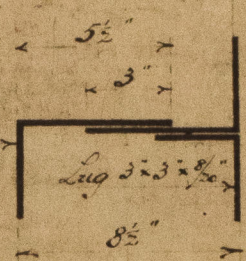
Under 42 1/2" Beam

Section of Framing in
Holds & 6" B. Space.

Section of Framing in
Fore & After Peats.

Per. frame 6" x 3 1/2" x 7/20

Per. frame 3 1/2" x 3 1/2" x 7/20



Steel Deck 7/20 to 7/20

Proportions

Depth in Length to Main Bk 14' 8 1/2" - 2 = 14' 8 1/2".
Spar Bk. = 11' 9 1/2".
Breadths in Length = 7' 2 1/2".

Frame 5 1/2" x 3 1/2" x 7/20

Double for
top each end
of Bridge

4" x 4" x 9/20
5 1/2" x 3 1/2" x 7/20

Beams of every frame 8" x 3" x 7/20 Built angle.
Fore end Beams 10 1/2" x 3" x 7/20 Built angle.

Under 44 1/2" Beam

Quarter Pillars 2 1/2" dia. Spaced 8' 0" apart.

Equipment.

2. Powers 38 Cut. in. S. S. 100	270 Taps. 2 Stud. Chain Cable.
1 32 1/2	90 1 1/2" Stream. Chain.
1 Stream 1 1/2	120 1 1/2" Temp. on 1/4" Steel Wire.
1 Ledge 5 1/4	90 10" Hawsers or 3 1/4
	90 8" Warps.

Roofs 31' 0" Long.
Bridge 118' 0"
Sole 38' 0"
Creations 187' 0"

1/20 Gauge 8" Face Plate, in Hatchway 12"

Beams on all frames 11" x 3" x 7/20 Built angle.
3 1/2" x 3 1/2" x 7/20 double angles.
10" x 3" x 7/20 angles 38" x 38" x 7/20
QUARTER PILLARS 4" dia. SPACED 8' 0" apart

Beams less than 1/4th the length of the midship beam
9 1/2" x 3" x 7/20 Built angle. 3 1/2" x 3 1/2" x 7/20 double angles.
Beams in way of casing. Built angle 8 1/2" x 3" x 7/20 or 10" x 3" x 7/20
1/20 Steel Deck from stringer to casing.

Frames 5 1/2" x 3 1/2" x 7/20 for 3 1/2" to 7/20 at ends. Spaced 24" apart.
Ref. frames 6" x 3 1/2" x 7/20 to 7/20 Extending up to Spar Deck stringer
Forecastle Deck on Alternate frames
Bulkheads 1 1/2". Spaced vertically with angles 5 1/2" x 3 1/2" x 7/20 Spaced 2' 6" apart.
6 horizontally with Built angles 8" x 3" x 7/20 Spaced 4' 0" apart.
Webs & Semi-bot beams to rule
Stern 10" x 2 1/4". Stern frame 10' 6". Rudder Stock 8 1/2" dia. head. 1/4" dia. of Pindles Plate 7/20.

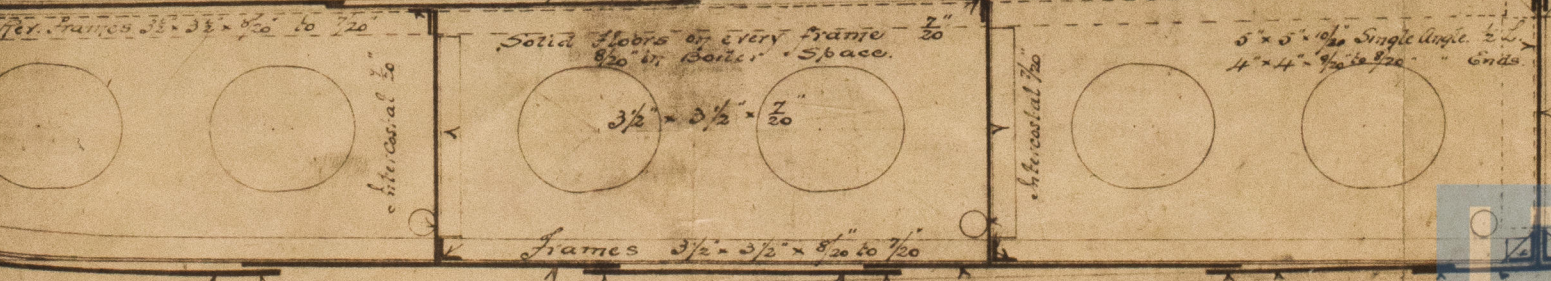
RIVETTING.

Butts of all Steel Plating lapped & treble rivetted throughout.
Butts of Spar & Main Deck Stringer lapped & treble rivetted.
Butts of Middle Line Strake on inner bottom lapped & double rivetted throughout.
Butts of Margin Plate lapped & double rivetted throughout.
Butts of inner Bottom Plating lapped & double rivetted for 1/2 L. Single at ends.
Butts of Centre Under lapped & treble rivetted throughout.
Butts of Spar Deck Plating lapped & double rivetted for 1/2 L. Single at ends.



Casing 3" laid on ballers 1 1/2" thick Inner bottom 7/20
7/20 to Engine space. 7/20 in Boiler space.

1/20 for 1 1/2" to 7/20 5/20



Centre Girder Continuous
40" x 7/20 to 7/20
15" x 4 1/2" x 7/20

Outside Strake Plating shell plating
except Spar Deck 7/20 to also not 1/20
Plating on per 1 1/2" 7/20 Report

Double in way
of unframed hatch
double angles
double angles

Solid Ribs 7" dia.

J.H.L.
18/98

J.H.L.
7/7/98

Midship Section
Wm Hamilton & Co No 144

S.S. "Claverdon"

Gen Report No 12575



similar vessel to H. Wargula
Jrk 12327

GRK348-0072



© 2021

Lloyd's Register
Foundation