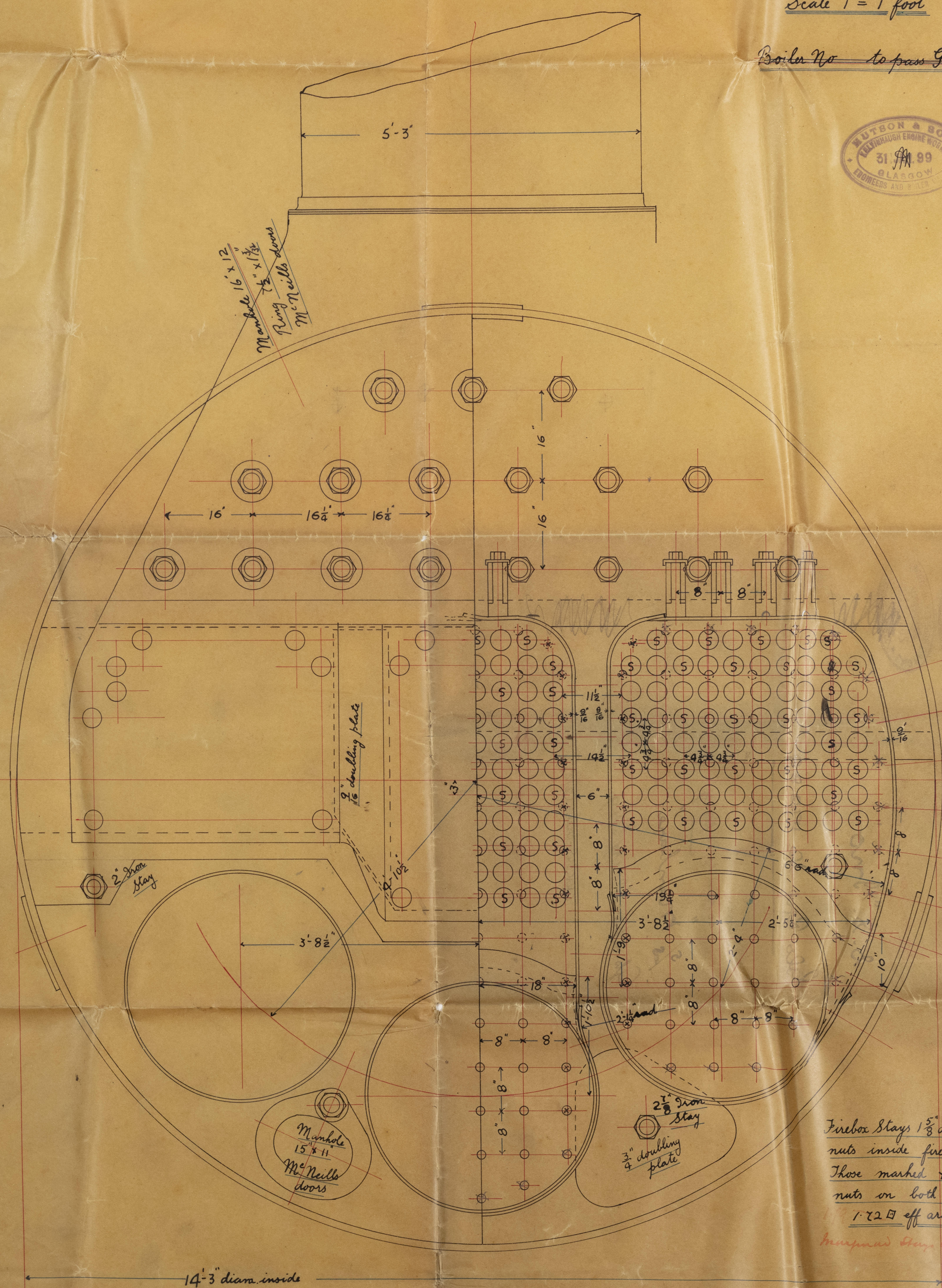
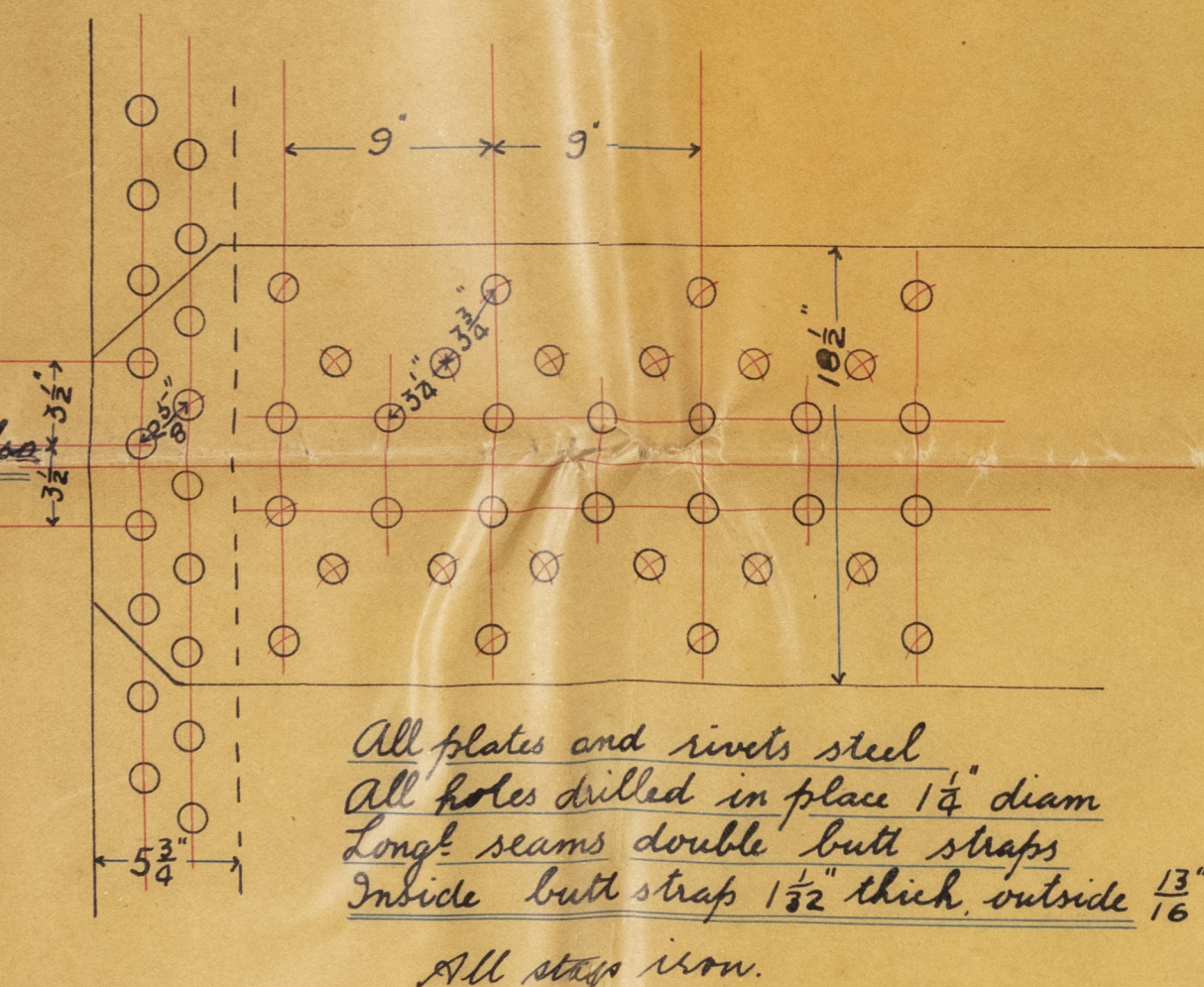
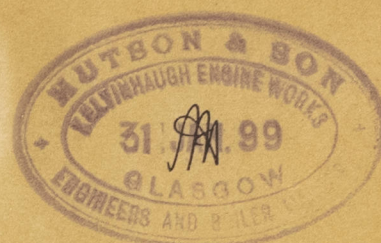


2/2  
H. 2.99

Boilers Nos 454-5-6  
Engines Nos 242-3-4  
Campbelltown Nos 58, 59, 60  
Pressure 160 lbs per sq. in.  
To pass Lloyd's  
Scale 1" = 1 foot

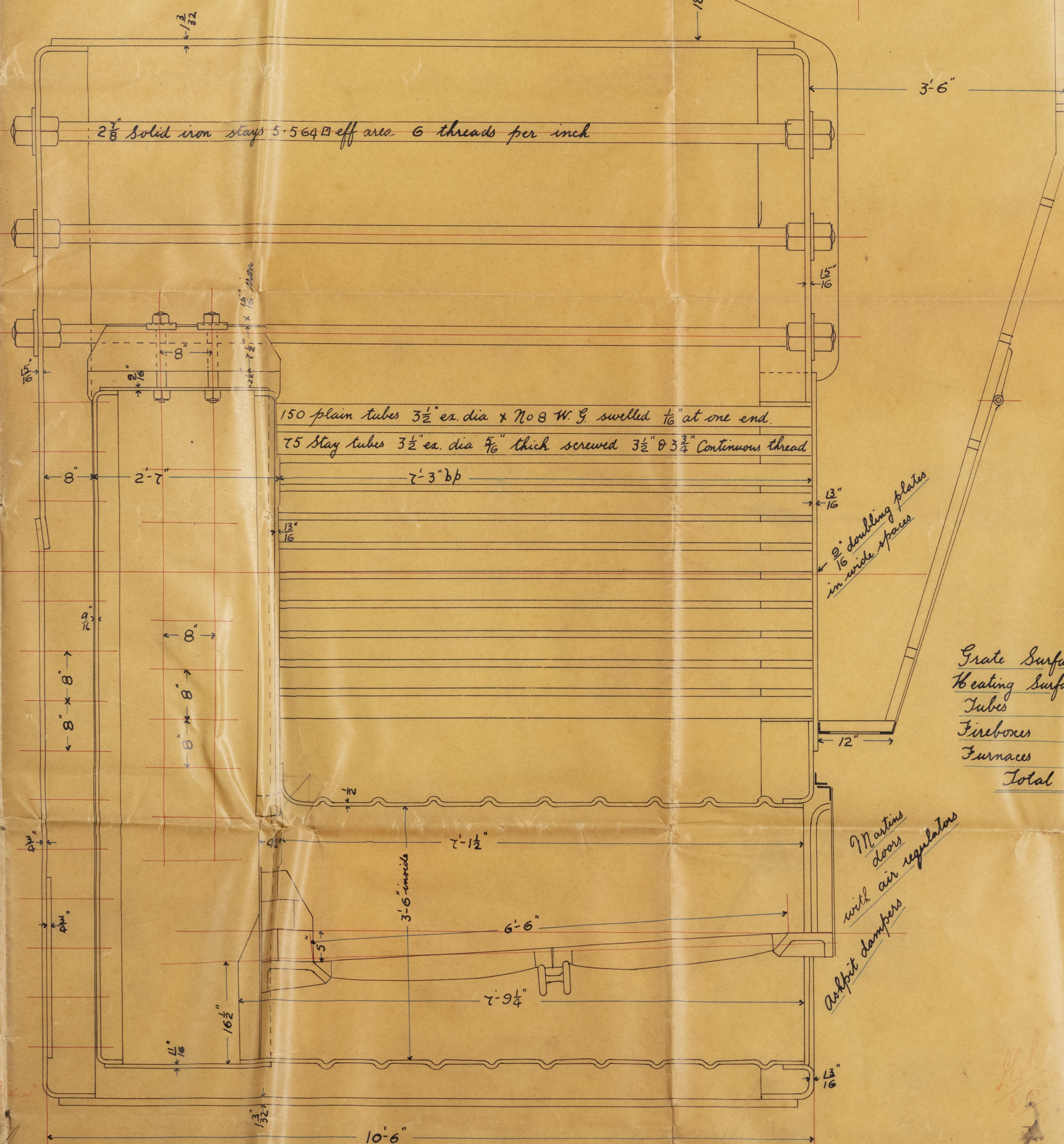
Boiler No to pass German Law also



Firebox stays 1 1/2 inch dia with  
nuts inside fireboxes  
Those marked x to have  
nuts on both ends  
1 1/2 inch off area.

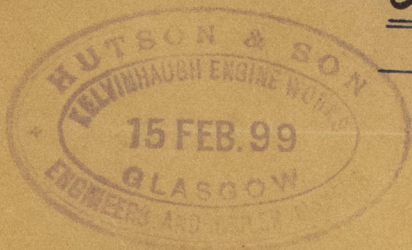
Impressed stay between 1 1/2 inch

Wells  
22 Feb 1899



Grate Surface	65.5 sq. ft.
Heating Surfaces	
Tubes	1494.7 sq. ft.
Fireboxes	245.2 - -
Furnaces	130.6 - -
Total	1870.5 sq. ft.

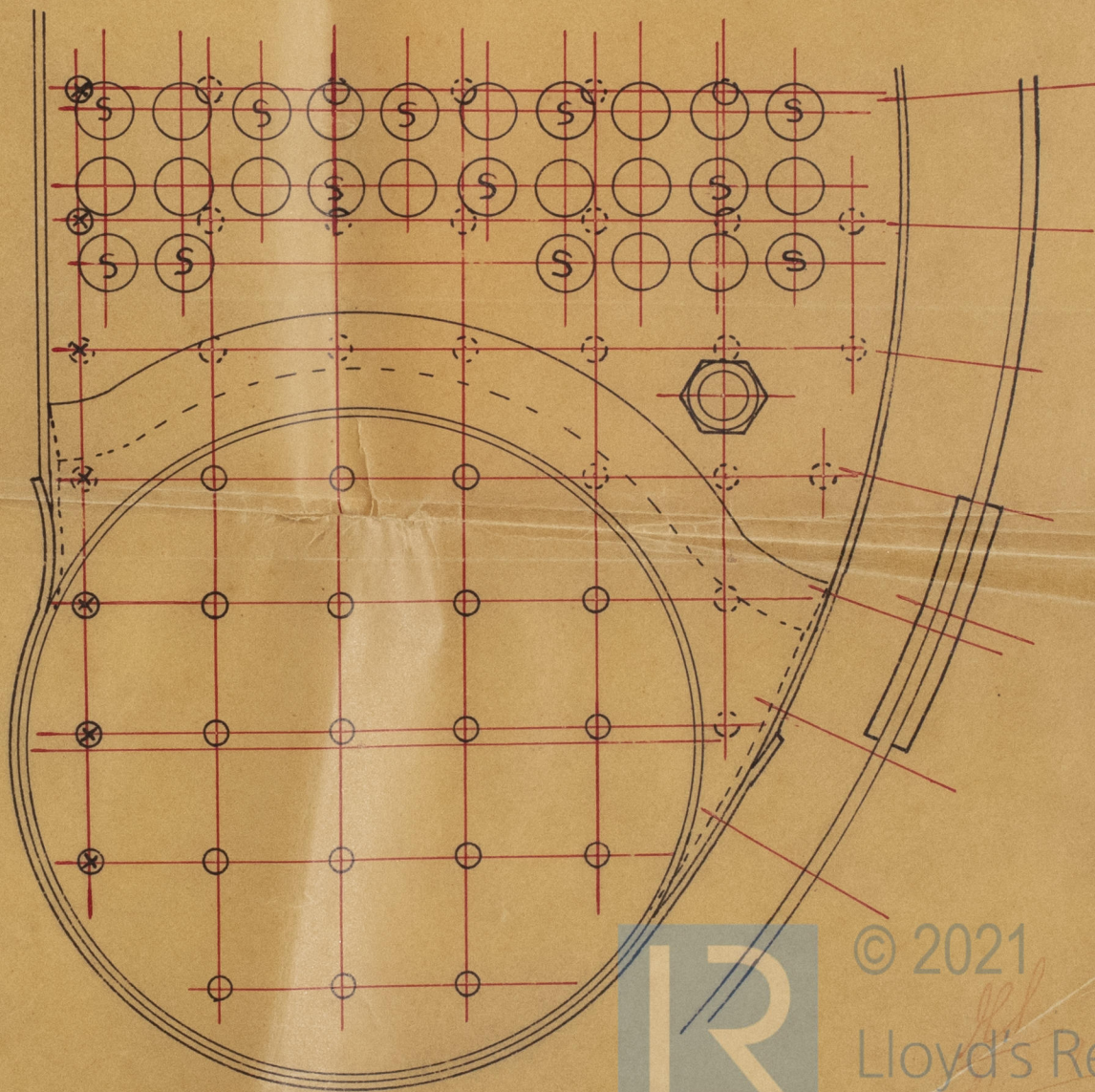




— Arrangement of tubes —  
— Boilers Nos 454, - 5 —



21.2.99



© 2021

Lloyd's Register  
Foundation

QEL3480065  
(1/2)



Campbell's 1849, No. 5849.

Hutton's 1849, No. 1849.  
262 2 1/2

Working Paper No. 1849.

S. S. "Ino"

Gls Rpt No. 17389

2. 1849

1849

5/18 "Manbare"

Gls rpt No. 1849.

GRK348-0065 (2/2)



© 2021

Lloyd's Register  
Foundation