

12.5.96  
16.6.96

Stringer plate 30"x20"  
Channel 6"x5"x20"

Steel Deck 50"

Deck 5"x23" Yellow pine

Bridge Deck

# Midship Section of S.S. No 344.

Length between perpendiculars 280'-0"  
Breadth (at Main Deck) 42'-6"  
" ( " Spar " ) 40'-6"  
Depth moulded to Spar Deck 23'-0"  
" hold " tank top 20'-9"

Scale 1/2 inch = 1 foot

Stringer plate 44"x20"  
for 1/2 len, red to 31"x20"  
Angles 4"x4"x20" for 1/2 len, rem 70"

Steel Deck 50" for 1/2 len, rem 70"

Deck 5"x23" Teak where exposed & Pitch plate inside houses

Spar Deck

4"x3"x20" angle bulb

Sheerstrake 40"x20" for 1/2 length, reduced to 20"  
Double at ends of bridge

Frames 44"x3"x20" for 1/2 len, remainder 70" or reversed frames spaced 24" apart.

Rev " 5"x3"x20" fore & aft to Spar and Main Deck alternately, all to Spar Deck in way of bridge, & to fore & aft as per rule.

Main Deck Beams 8"x3"x20" Angle bulb, Under 4" len 20" on every frame.

Spar " 7"x3"x20" " " " " " " " " " " " "

Bridge " 6 1/2"x3"x20" " " " " " " " " " " " "

Bulkheads 50" Vertical stiffeners 4 1/2"x3"x20" spaced 24" apart.

Horizontal stiffeners 8"x3"x20" 4'0" apart, angle bulb.

Central Web to Main Deck on collision Bulkhead and all Bulkheads above 36'0" wide

Stringer plate 44"x20" for 1/2 len, reduced to 31"x20"  
Angles 4"x4"x20" for 1/2 len, rem 70"

Steel Deck 50" fore & aft.

8"x3"x20" Angle bulb

Sheerstrake 40"x20" for 1/2 len, rem 70"

14'2" Depth to Length (To Main Deck)  
6'5 1/2" Breadth " "  
11'4 1/2" Depth " " (To Spar Deck)

## Numbers

Depth = 16.00 ✓  
1/2 Breadth = 21.25 ✓  
1/2 Girth = 32.12 ✓  
69.37 ✓ 11°  
279 = Length  
548023  
12174  
1935423 ✓ 11°  
432423  
23678.46  
1628 1691 = 14 added  
25369.46 = Equipment 11°

SOOTT & CO.,  
ENGINEERS AND SHIPBUILDERS,  
GARTSDYKE,  
GREENOCK.

6/5/96

Hold sparring 6"x2" Red pine

Shell plating.  
Garboard to Main D.  
Sheerstrake 20"x20" for 1/2 len, red to 70" x 20"

Web frames in lieu of Hold beams, 14"x20" to Main Deck on every 8th frame. To have one stringer between bilge stringer and Main d. 20".  
Diamond plate, 30"x21"x20"  
Angles, 3"x3"x20"

Inner bottom (except middle line strake) 70" in Engine & Boiler space, remainder 50".  
Middle line strake, 70" for 1/2 len red to 20".

Ceiling 2 1/2" Red pine.

Equipment

1 Anchor	40 cuts	Stainless
1 "	" "	
1 "	34 "	
1 Stream anchor	16 1/2 "	
1 Hedge	3 1/4 "	
240 Patoms 1 1/2" Cable Chain		
45 "	1 1/2" Stream "	
Flawsers		
90 Patoms	4" Wire	
90 "	3 1/4 "	
90 "	2 1/2 "	
100 "	10" Hump	
100 "	7 "	
400 "	6 "	

Bulb for 1/2 len x Intercostal plate for 1/2 len, 70" Angles 5 1/2"x4"x20" for 1/2 len to 70"  
70" in E & B space, rem 70" 70" in E & B space, rem 70" 70" in E & B space, rem 70" 70" for 1/2 len red to 20"  
Flanged Floors, continuous from centre to margin plate 20" thick, 20" in E & B space  
70" 20" in Boiler space.  
5"x3"x20" 5"x3"x20" 5"x3"x20" 5"x3"x20"  
Angles 4"x4"x20" 1/2"x20" Angles 5 1/2"x4"x20"

Bridge keel for about 130 ft 10'6" x 2 1/2" T bulb

## Finishing

Shell plating Butts lapped & Treble riveted fore & aft.  
Main Deck & Spar Deck Strg. " " " " for 1/2 len, rem double

Garboard strake 20" for 1/2 len, red to 20"

Keel plate 36"x20" for 1/2 len, rem 20"  
Stem 9"x22"  
Stem post 9"x25"  
Rudder stock 7"x14" Head 3 1/2"x14"

Greenock 6/5/96



Lloyd's Register Foundation



Scott & Son

No. 344 Vessel

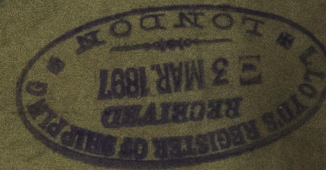
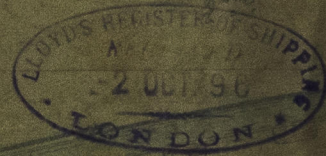
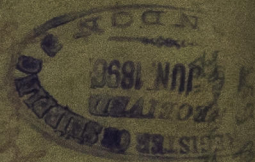
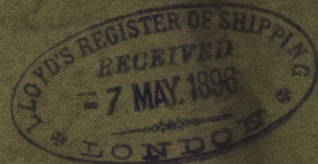
Sketch of Machinery

Leifer

as "Attiny"

Guano Report

GR4337-0035



Guano Report 20 x 10

Guano Report 10 x 10



© 2020 Lloyd's Register Foundation