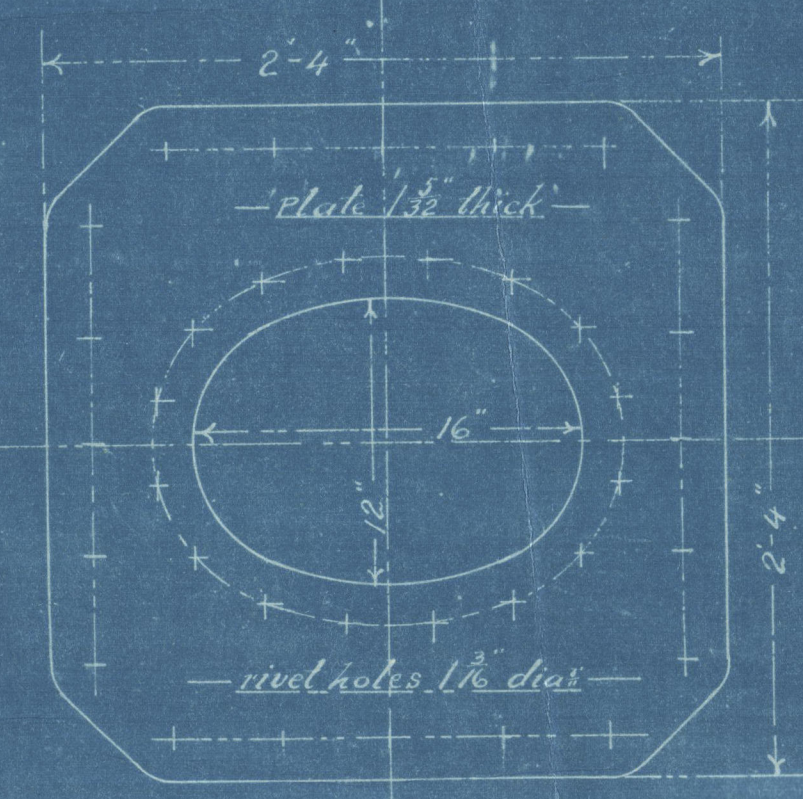
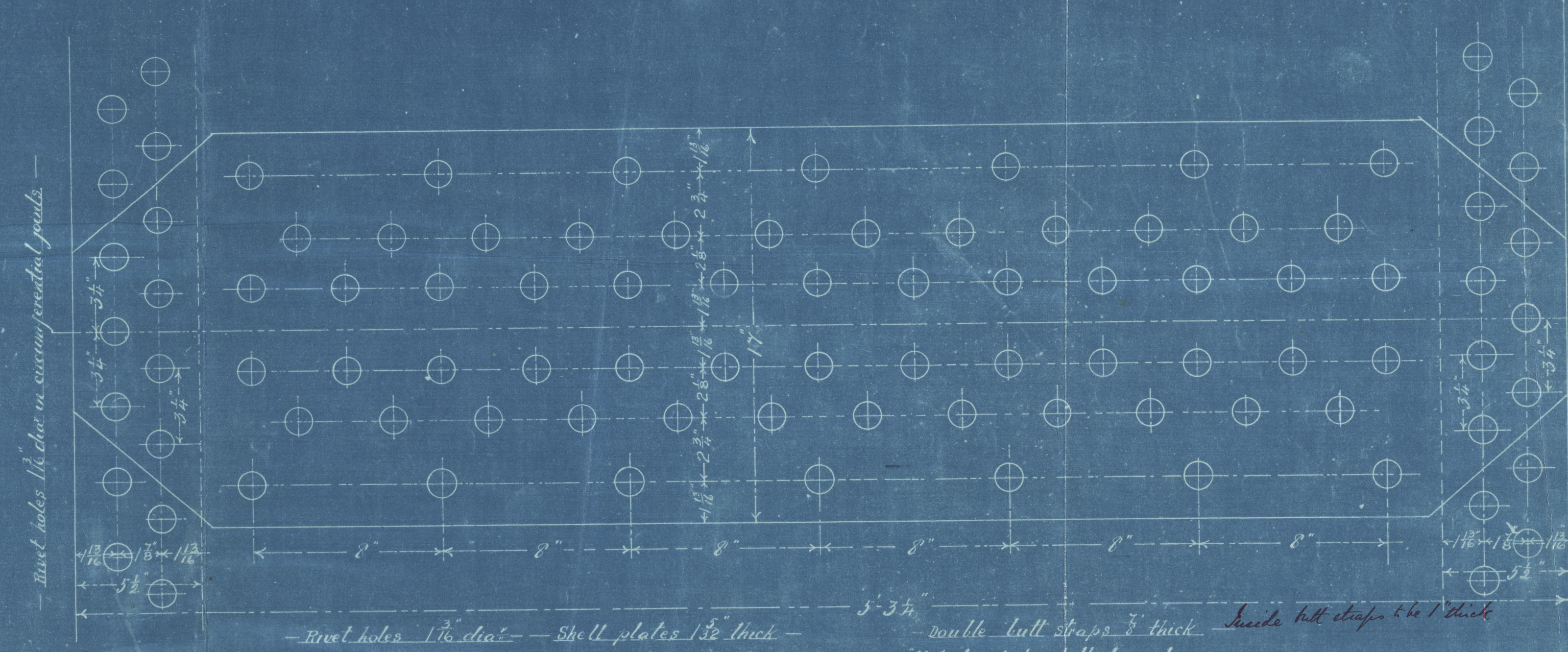


23.5.96

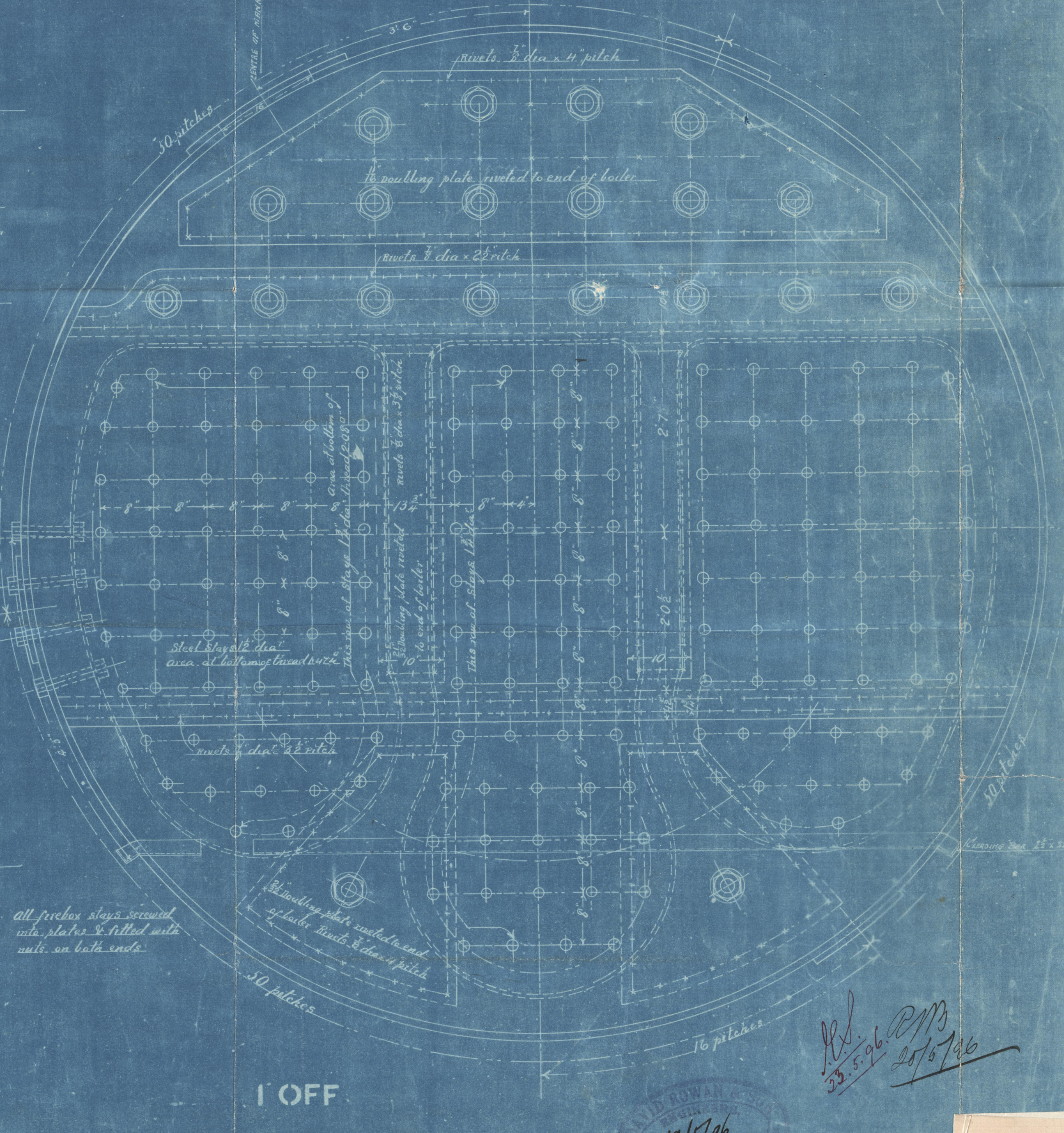
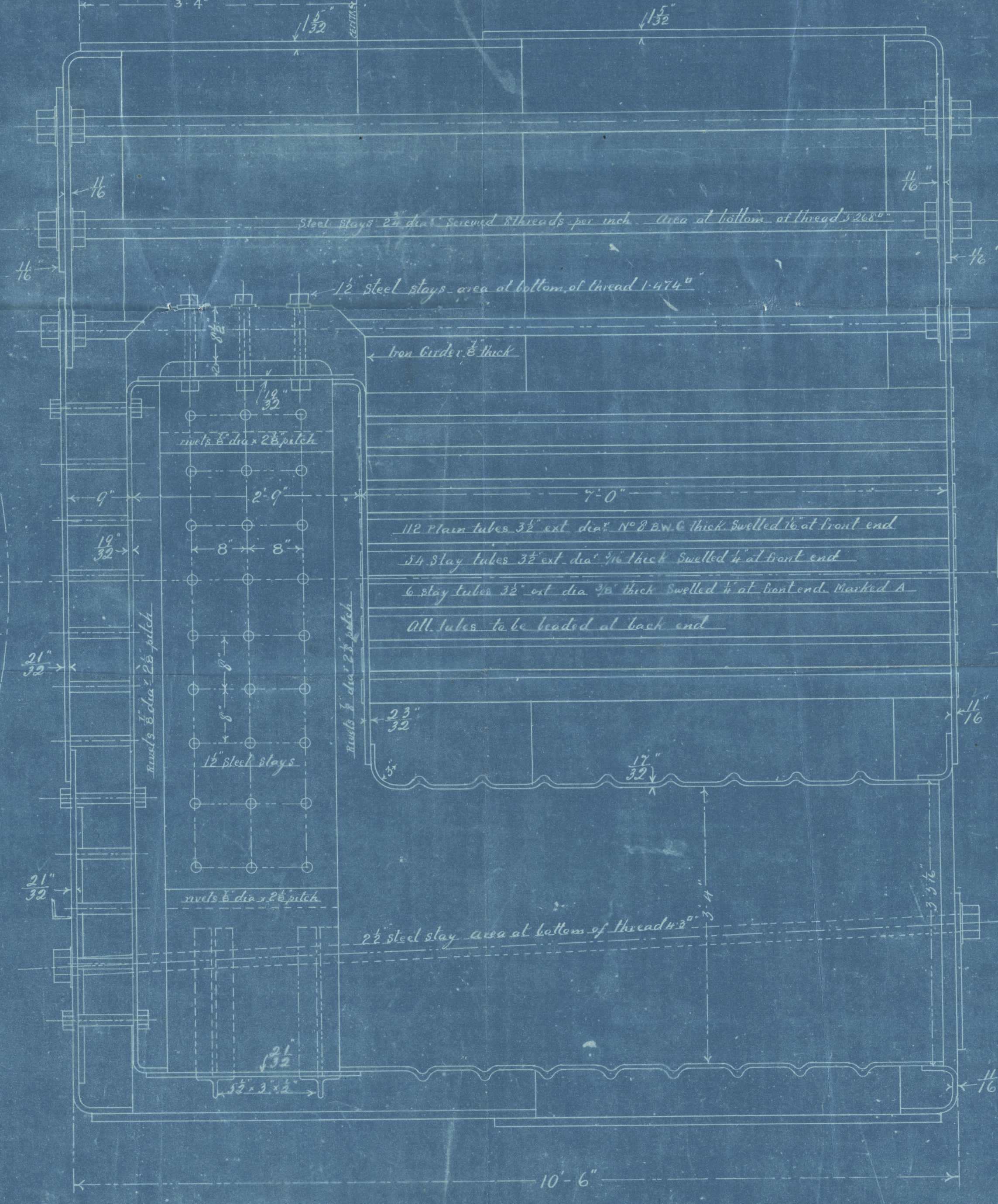
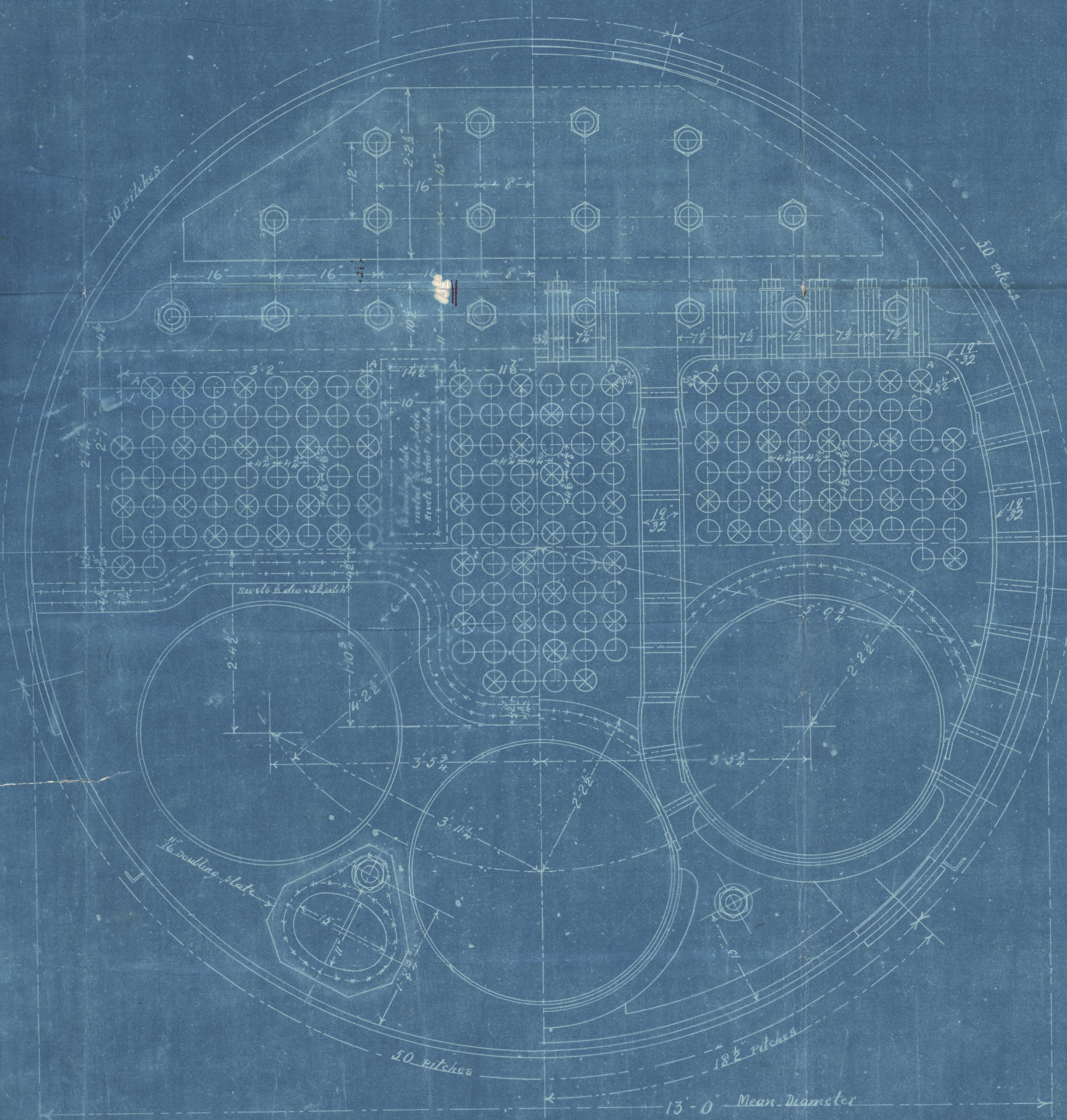
| Thickness of Plates                 |              |
|-------------------------------------|--------------|
| Shell of Boiler                     | 1 1/2" Steel |
| do. Butt straps                     | 3/4"         |
| Top front & back                    | 1 1/2"       |
| Front tube plate                    | 1 1/2"       |
| Bottom front                        | 1 1/2"       |
| Centre & bottom back                | 3/2"         |
| Back tube plate                     | 3/2"         |
| Furnaces                            | 3/2"         |
| Sides & top of fireboxes            | 3/2"         |
| Back of fireboxes                   | 3/2"         |
| Bottom do.                          | 1 1/2"       |
| Drumming plates on top front & back | 1 1/2"       |
| do. on front tube plate             | 1 1/2"       |
| do. on centre & bottom back         | 3/2"         |
| do. for manhole on top              | 1 1/2"       |
| do. do. between furnaces            | 1 1/2"       |



Drumming plate for manhole on top



SCALE 3 INCH TO THE FOOT



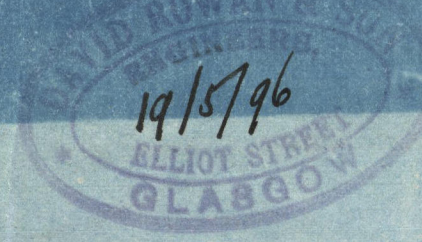
1 OFF

08-11-96

SCALE 1 INCH TO THE FOOT

WORKING PRESSURE 175 LBS

MAIN BOILER 279-80

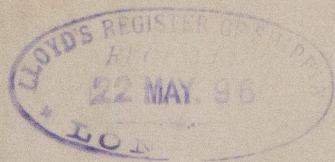


23.5.96 RMB 20/6/96

Rowans 279-80

Murdoch & Murray 53 146

S.P. Cidade de Manaus



GRK335-0151 ( $\frac{2}{2}$ )



© 2020

Lloyd's Register  
Foundation

FROM DAVID ROWAN & SON, GLASGOW.

ENCLOSURE

FOR

*Miss Lloyd's Surveys*

Foundation

GRK 335-0151( $\frac{1}{2}$ )