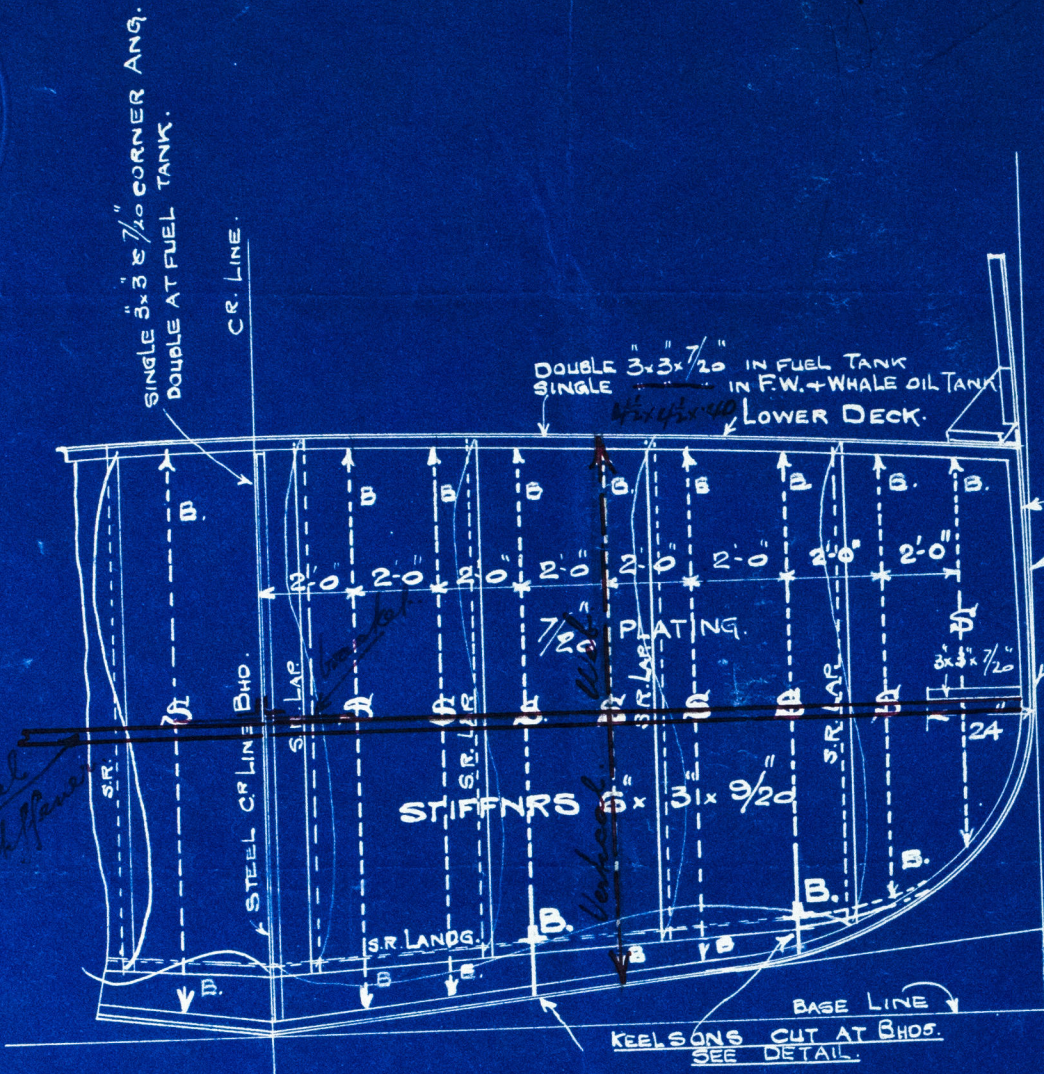




9-3-11  
18-3-11



S = STIFFENER.

PLAN SHEWING PROPOSED ARRT.  
OF TRANSVERSE BHD. STIFFENING.

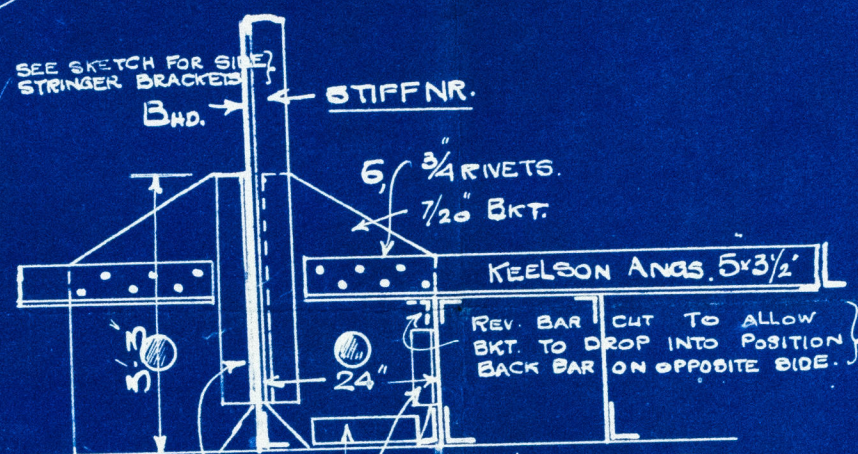
1/4" = ONE FOOT.

"  
SOUND OF JURA."

RIVETING IN WHALE OIL BHDS. SAME AS  
FOR ORDINARY W.T. BHDS.  
RIVETING IN FUEL TANKS, AS FOR OIL TIGHT WORK.

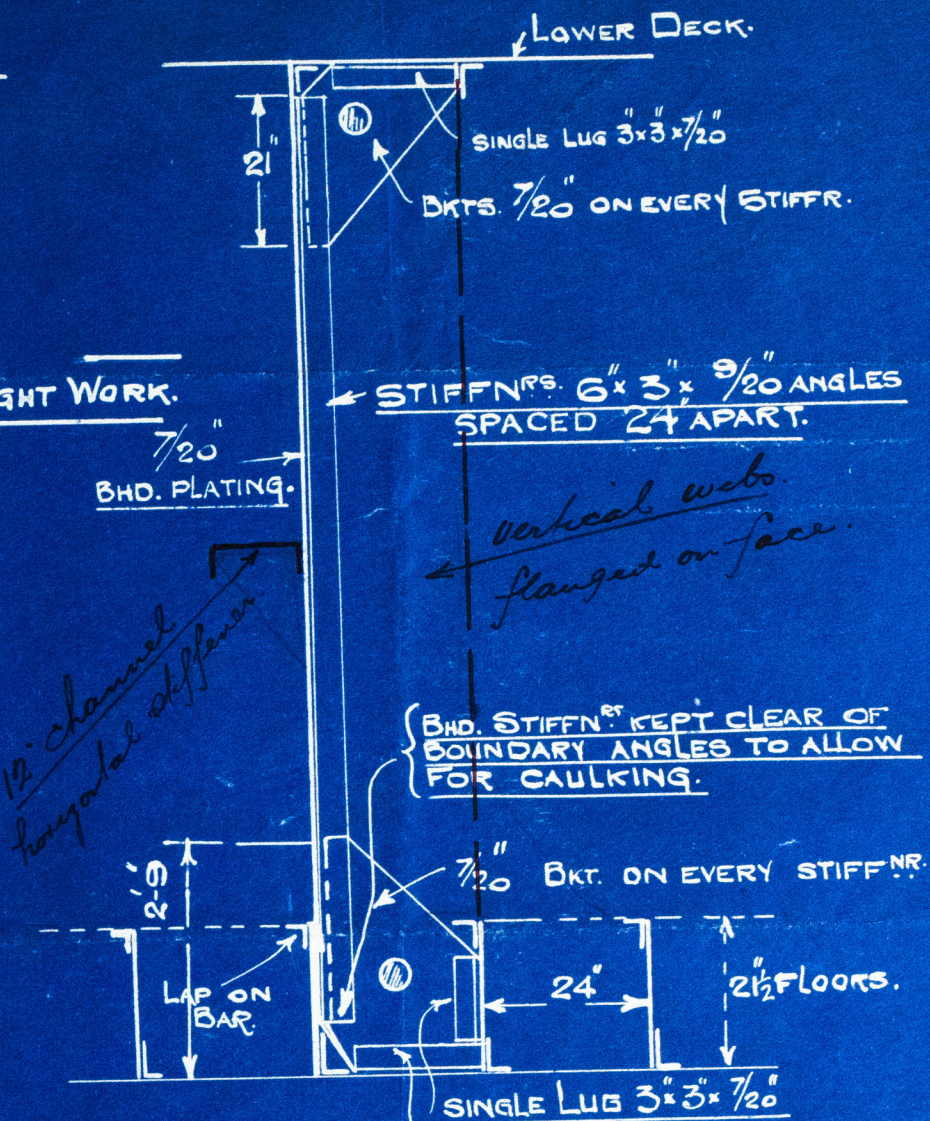
SINGLE FRAME 5x8x7/20 AT WHALE OIL, +  
F.W. BHDS.  
DOUBLE 5x3x7/20 AT FUEL TANK BHD.

SEE SKETCH FOR SIDE  
STRINGER BRACKETS



SKETCH SHEWING KEELSONS CUT  
AT BULKHEADS, WITH BRACKETS  
TO BHD. STIFFENERS.

SINGLE LUGS 3x3x7/20 1/2" = 1 FOOT.



SECTIONAL ELEVATION.

1/2" = 1 FOOT.

C.B.  
3-3-11.



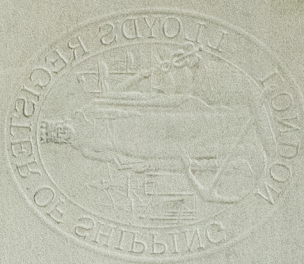
© 2019

14535-005

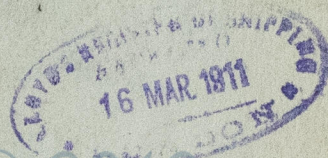
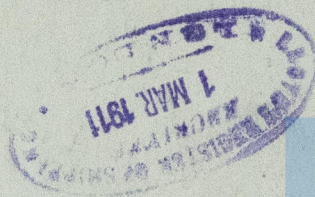
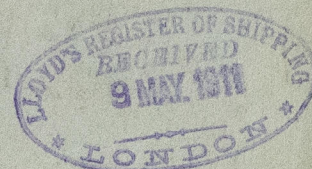
Lloyd's Register

Foundation





"Bku" Sound of Jura<sup>4</sup>  
Bulkhead plan  
ARW331-6105



© 2019

Lloyd's Register  
Foundation