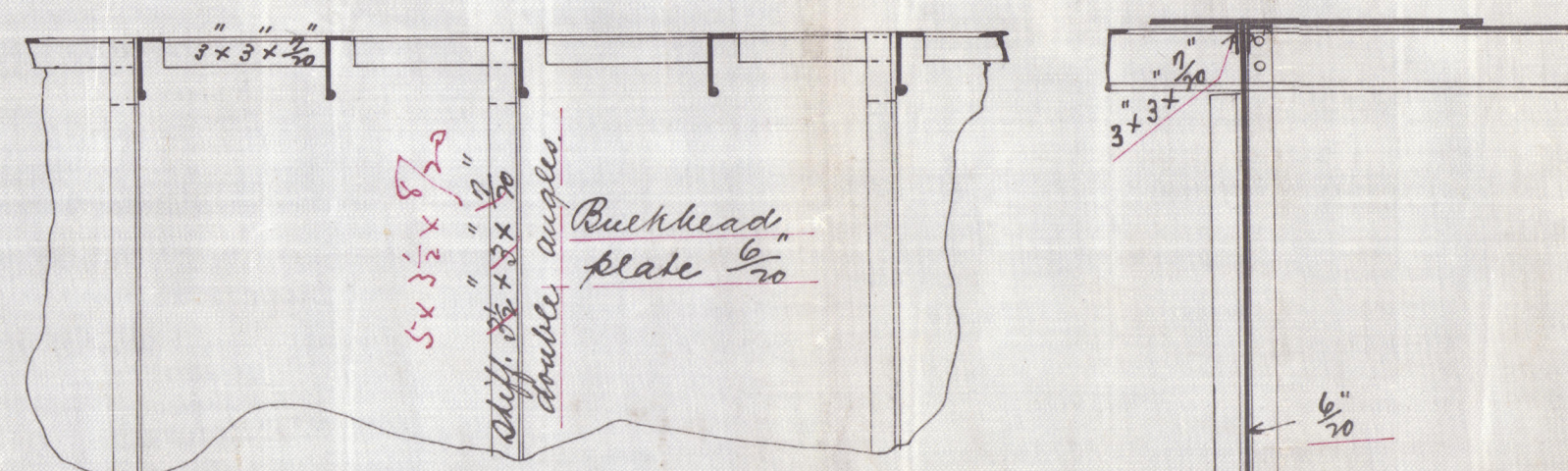
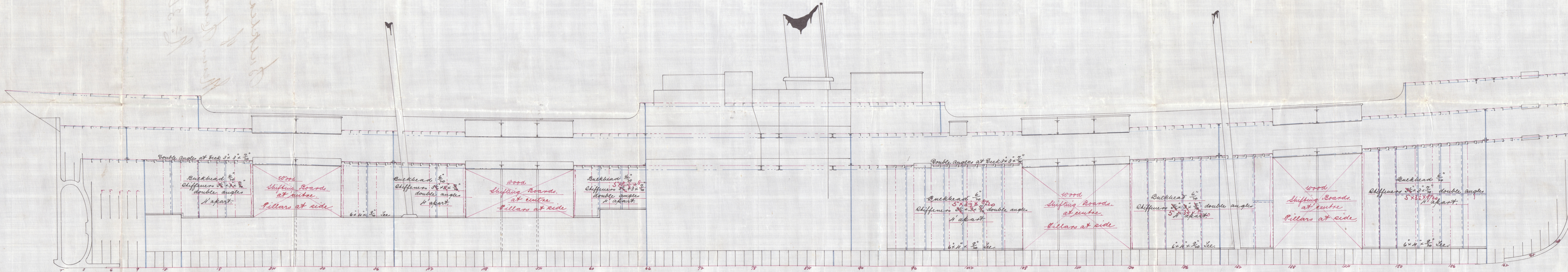
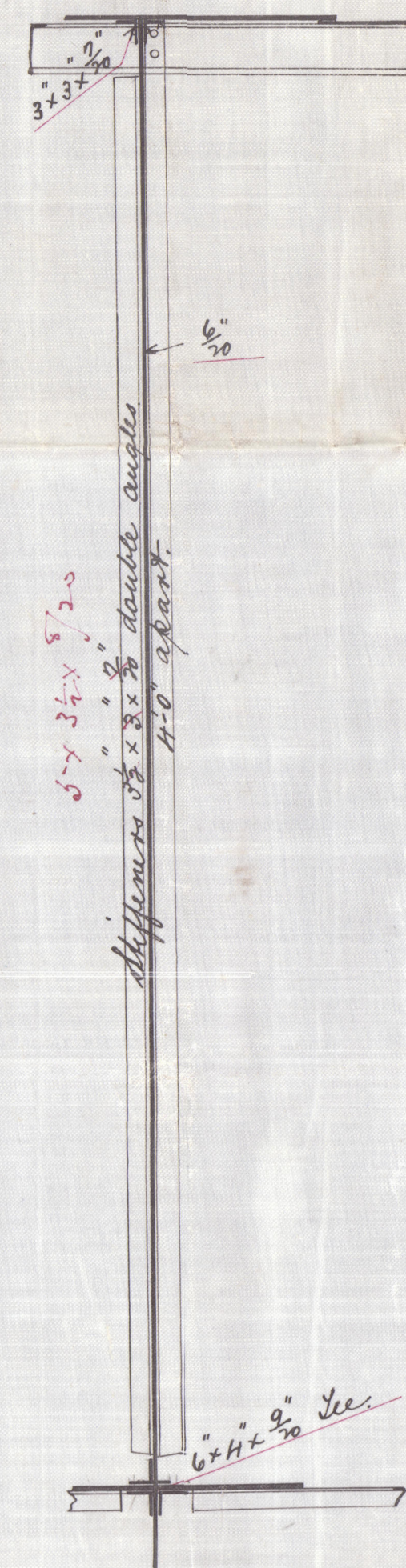


6.4.95



Details of Bulkhead
Scale 1/2" = 1 Foot.



Middle line Bulkhead in lieu of Hold Pillars, S.S. 361.

Scale 1/2" = 1 Foot.



12.11.1911
J.H.L.
Middle line Bulkhead
S.S. 361

APN331-0198

Ento Rept H:11291

Micula lina Newshol

Dana

Boydell Co H:361



Lloyd's Register
Foundation