

TELEGRAPHIC ADDRESS,  
"BEARDMORE, GLASGOW"

TELEPHONE NO 1356.

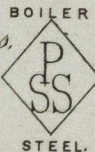
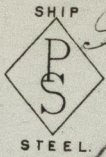
LONDON OFFICE,  
11 QUEEN VICTORIA ST. E.C.  
NEWCASTLE OFFICE,  
2 SAINT NICHOLAS BUILDINGS.

Parkhead Forge, Rolling Mills,  
and Steel Works,  
Glasgow 3<sup>rd</sup> April 18

Messrs James Watson & Sons.

Bought of William Beardmore & Co.

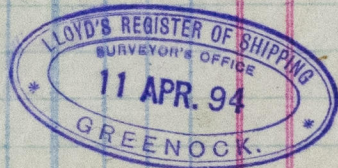
Manufacturers of Steel Plates Bars & Rivets (Siemens Process) & Iron Plates Bars &  
Rivets for Ships, Boilers, &c. & Marine Engine Forgings of all descriptions.  
Iron & Steel Plates flanged for Boiler Fronts &c.



BF	1	755681	7.6	50	9/16	818
OS	1	871	22.22	62 3/4	1 3/8	2101.
BF	1	778	7.6	59	9/16	814
M	2	10	2.7	27	1 3/8	86.8
OS	2	339	22.22	62 3/4	.	2103.
SF	1	381	9.6	51	9/16	8.
D	1	421	2.0	24	1 1/8	13.
BTP	1	974	9.6	51	15/16	14112
BF	2	527	7.6	59	9/16	16.
<u>11</u>					<u>9134</u>	

Per Ctn 39011 to Machine Works  
Greenock.

3 Plates 3.15.3.12 78  
8 . 5.5.3.20 391



© 2019  
GRK329-0158

Lloyd's Register  
Foundation