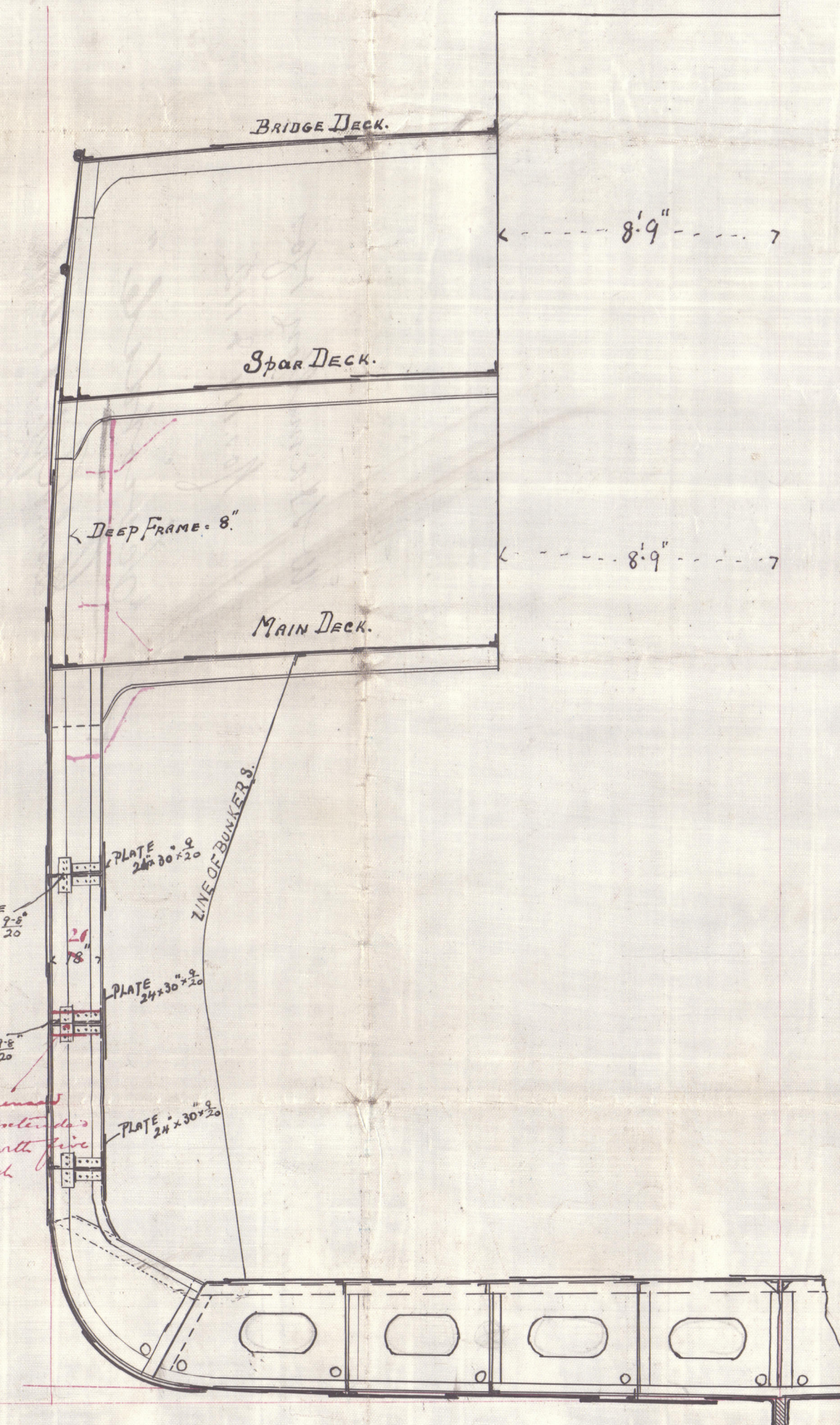


This is a hand-drawn structural plan of a ship's deck layout, showing three main levels: Bridge Deck, Spar Deck, and Main Deck. The plan is oriented with the bow at the top. Key features include:

- Bridge Deck:** The uppermost section, featuring a central longitudinal bulkhead and several transverse bulkheads. It is labeled "BRIDGE DECK" at the top.
- Spar Deck:** Located below the Bridge Deck, it shows a similar longitudinal structure with transverse bulkheads. It is labeled "SPAR DECK" in the middle.
- Main Deck:** The lowermost section, showing a complex arrangement of longitudinal and transverse bulkheads, as well as various beams and girders. It is labeled "MAIN DECK" in the middle.
- Structural Details:** The plan includes numerous dimensions and material specifications for the structural members. For example, it shows "10' x 20' plate" for deck plating, "11' x 14' 20' angle" for beams, and "8' x 5' x 1/2" for girders. It also indicates the use of "Semi box beam" and "Plate 30' x 24' x 3/8".
- Orientation and Scale:** The plan is oriented with the bow at the top. A scale bar at the bottom indicates distances in feet, with markings for 75, 80, 85, 90, and 95 feet.
- Handwritten Notes:** There are several handwritten notes in blue and red ink, providing additional details and corrections to the drawing. These include "Watertight Bulkhead" and "Green Bulkhead" labels, and various dimension corrections.



SECTION. THRO
EY B. SPACE.

—SS" Nos 111 & 112— & Nos. 115 & 116

SCALE = $\frac{1}{4}$ INCH = ONE FOOT

Approved
13. 2. 94



© 2020

Lloyd's Register
Foundation

GRN 328-000

W. Hamilton 1701
Nos. 111 & 112.

"Sciothdale"

Sub. Rpt. 11011

Web frames

"Planet Venus"

Sub. Rpt. No 11112

ARH328-0021



© 2020

Lloyd's Register
Foundation