

TELEGRAPHIC ADDRESS.
"BEARDMORE GLASGOW"

TELEPHONE NO 1356.

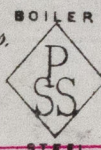
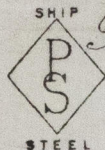
LONDON OFFICE.
11 QUEEN VICTORIA ST. E.C.
NEWCASTLE OFFICE.
2 SAINT NICHOLAS BUILDINGS

Parkhead Forge, Rolling Mills,
and Steel Works,
Glasgow. 9th August 1893

Messrs Neilson Bros.

Bought of William Beardmore & Co.

Manufacturers of Steel Plates Bars & Rivets (Siemens Process) & Iron Plates Bars &
Rivets for Ships, Boilers, &c. & Marine Engine Forgings of all descriptions.
Iron & Steel Plates flanged for Boiler Fronts &c.



312	H	1 105 ^P _{SS}	7. 2 1/2 R ²	60	31/32	18 1.
	K	3 880/9	14. 9	54 3/4	23/32	2 14 2 16
	N	3 852/3	9. 4	50 3/4	3/4	1 13 3 20
	V	6 489 ^P _{SS}	4. 6 1/2	9 1/2	9/16	4 2 8
	W	3 845	4. 2	"	"	1 3 12
	Z	4 90-835	2. 11 1/4	2 1/4	9/16	4 2 8
	a	5 486 ^P _{SS}	2. 10	12	1/8	2 14 1 12
		7 790/9-156/4				8 12. 20

Per 6 R to Messrs
Blackwood & Gordon
Port Glasgow
Truck No: 39124. 40896/4.

9	4. 11. 3. 24	(1/4)
5	1. 1. 1. 4	(2/4)
63	2. 18. 3. 20	(5/1)

W. J. Blackwood
11/8/93
to Lloyd's Register

